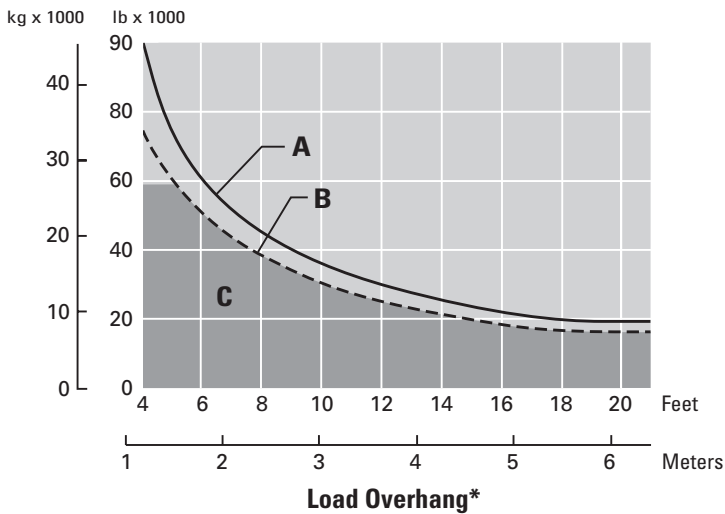


# 572R Series II Pipelayer

## Lifting Capacity



### Specified Equipment

• Diameter wire rope	19 mm	0.75 in
• Rope minimum breaking strength	261.66 kN	58,800 lb
• 4 part load line		
• 4 part boom line		
• Counterweight extended	5073 kg	11,184 lb
• Standard boom	6.10 m	20 ft
• Total operating weight	31 845 kg	70,206 lb

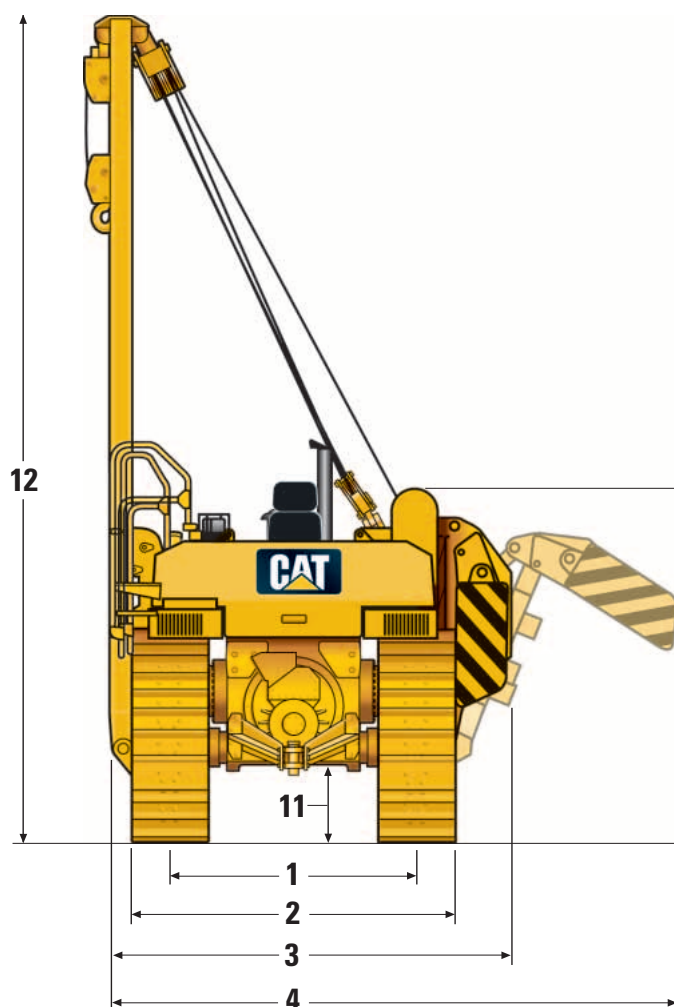
- A** Lift capacity at tipping point\*
- B** Rated load capacity\*
- C** Working range\*

\* Per ISO 8813:1992

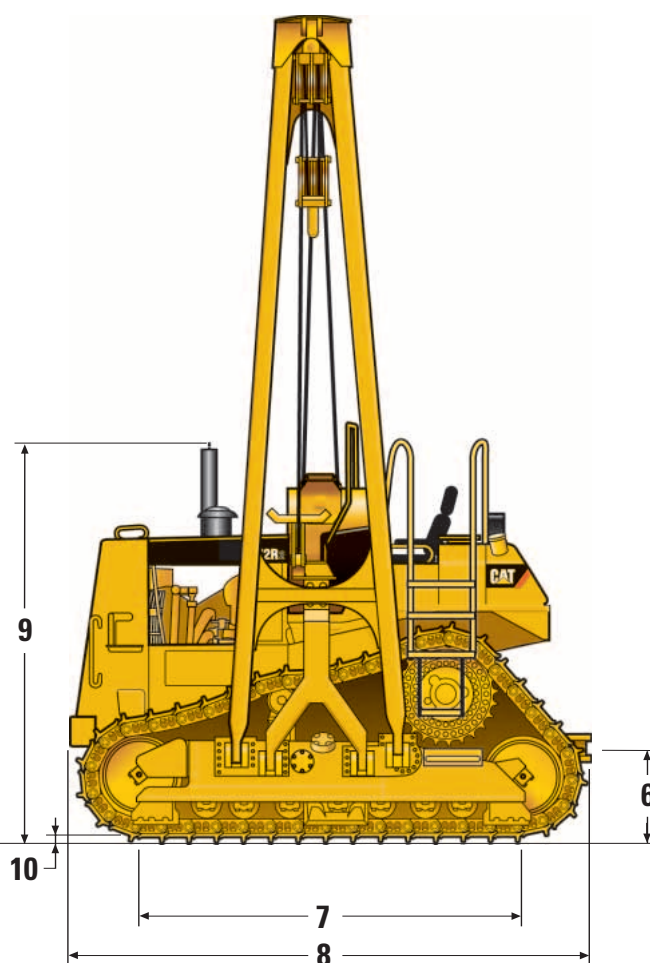
# 572R Series II Pipelayer

## Dimensions

All dimensions are approximate.



1	Track Gauge	2235 mm	88 in
2	Width of Tractor – Standard Shoes	2895 mm	114 in
3	Width of Tractor – Boom Removed	3659 mm	144 in
4	Width of Tractor – Counterweight Extended	5228 mm	206 in
5	Machine Height – Tip of Grouser to Top of Winch	2895 mm	114 in
6	Drawbar Height (Center of Clevis)	634 mm	24.9 in



7	Length of Track on Ground	3176 mm	125 in
8	Operating Length (with Drawbar)	4736 mm	186 in
9	Height to Top of Stack	3553 mm	133 in
10	Grouser Height	71 mm	2.8 in
11	Ground Clearance (SAE J1234)	416 mm	16.4 in
12	Boom Height – Tip of Grouser at SAE 4 ft (1.22 m) Overhang	6728 mm	265 in

## 572R Series II Pipelayer

### Optional Equipment

*Optional equipment may vary. Consult your Caterpillar dealer for details.*

	kg	lb
Electrical:		
Alternator, 70-amp brushless	13	29
Alternator, 100-amp brushless	14	31
Converter, 20-amp, 12-volt	1	2
Guards:		
Crankcase, extreme service	80	176
Radiator, heavy-duty, hinged grill	48	106
Rear, heavy-duty	71	157
Track guiding		
Moderate service	85	187
Heavy-duty	107	236
Track roller, full	405	893
Operator Environment:		
Armrest, adjustable electric	55	121
Pedals, dual brake	0	0
ROPS, rollover protection system	477	985
Pipelayer:		
Boom, 7.3 m (24 ft)	1183	2,608
Boom, omission 6.1 m (20 ft)	906	1,997
Hook, latched	3	7

	kg	lb
Power Train:		
Cooling, high ambient	3	7
Drains, ecology (transmission, torque converter)	4	9
Fan, reversible	0	0
Fast fuel system	3	7
Grid, radiator core sand blast	17	38
Oil change system	9	20
Undercarriage:		
Track groups		
760 mm (30 in) MS HD, clipped	457	1005
Starting Aids:		
Batteries, heavy-duty	15	33
Heater, engine coolant	3	7