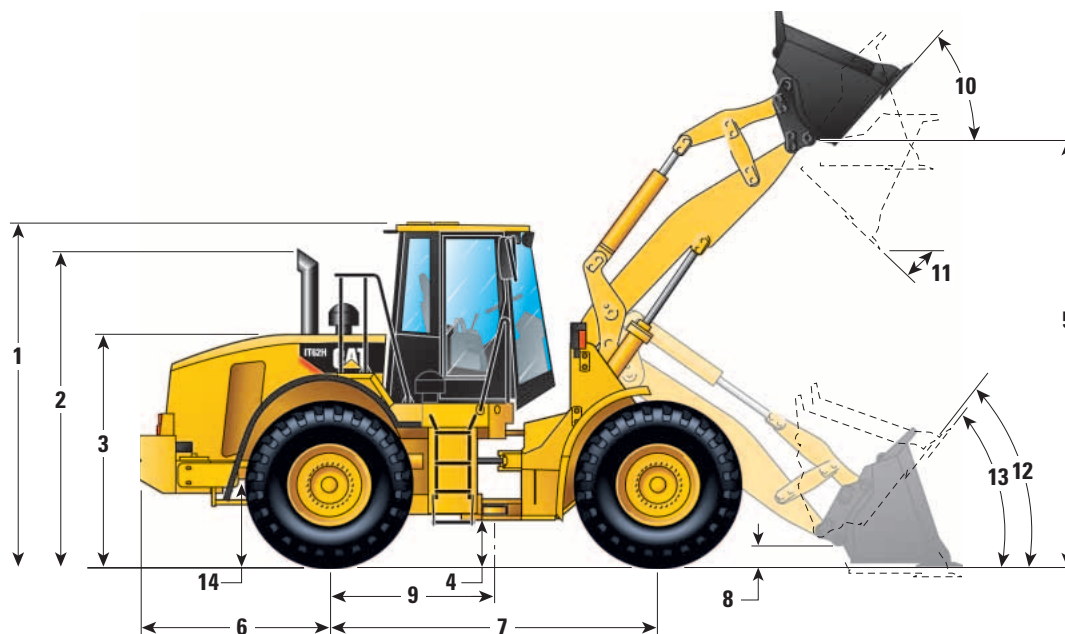


# IT62H Integrated Toolcarrier

## Dimensions – Material Handling Bucket

All dimensions are approximate.



<b>1</b> Height to top of ROPS	3452 mm	11'4"
<b>2</b> Height to top of exhaust pipe	3369 mm	11'1"
<b>3</b> Height to top of hood	2462 mm	8'1"
<b>4</b> Ground clearance with 23.5R25 (see Tire Options chart for other tires)	412 mm	1'4"
<b>5</b> B-Pin height – standard	4123 mm	13'6"
<b>6</b> Center line of rear axle to edge of counterweight	2000 mm	6'7"
<b>7</b> Wheelbase	3350 mm	11'0"
<b>8</b> B-Pin height @ carry – standard	315 mm	1'0"
<b>9</b> Center line of rear axle to hitch	1675 mm	5'6"
<b>10</b> Rack back @ maximum lift	57.7°	
<b>11</b> Dump angle @ maximum lift	49.4°	
<b>12</b> Rack back @ carry	51.5°	
<b>13</b> Rack back @ ground	44.2°	
<b>14</b> Height to center line of axle	748 mm	2'5"

## Tires

Tread width for 23.5-25 is 2140 mm (7'0")

	Width over tires		Change in vertical dimensions		Change in operating weight		Change in static tipping load	
	mm	inches	mm	inches	kg	lb	kg	lb
23.5R25 VSW BS L2 Radial	2862	113	6	0.2	20	44	14	31
23.5R25 VUT D2A BS L2 Radial	2866	113	10	0.4	-41	-90	-29	-64
23.5R25 XTLA MX L2 Radial	2801	110	7	0.3	-112	-247	-79	-174
23.5R25 VMT BS L3 Radial	2851	112	3	0.1	124	273	88	194
23.5R25 XHA MX L3 Radial	2784	110	0	0.0	0	0	0	0
23.5R25 XMINE MX L5 Radial	2807	111	26	1.0	872	1,923	619	1,365
750/65R25 XLD MX L3 Radial	2879	113	7	0.3	460	1,014	326	719
23.5-25 SGGL FS L2 Bias	2834	112	14	0.6	-472	-1,041	-335	-739

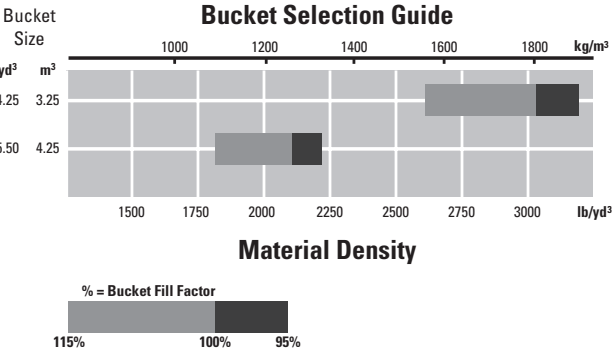
Operating Specifications

		Material Handling Buckets			
Bucket		Bolt-On Edges	Teeth	Teeth and Segments	Bolt-On Edges
Rated Bucket Capacity (§)	m³	3.25	4.25	4.25	4.25
	yd³	4.25	5.50	5.50	5.50
Struck Capacity (§)	m³	2.61	2.61	2.61	2.61
	yd³	3.41	3.41	3.41	3.41
Width (§)	mm	2885	2885	2885	2885
	ft/in	9'6"	9'6"	9'6"	9'6"
Dump Clearance at Full Lift and 45° Discharge (§)	mm	2785	2730	2730	2840
	ft/in	9'2"	8'11"	8'11"	9'4"
Reach at Full Lift and 45° Discharge (§)	mm	1227	1317	1317	1227
	ft/in	4'0"	4'4"	4'4"	4'0"
Reach with Lift Arm Horizontal and Bucket Level (§)	mm	2767	2909	2909	2767
	ft/in	9'1"	9'7"	9'7"	9'1"
Digging Depth (§)	mm	71	41	71	71
	in	2.80	1.61	2.80	2.80
Overall Length	mm	8498	8649	8649	8498
	ft/in	27'11"	28'5"	28'5"	27'11"
Overall Height with Bucket at Full Raise	mm	5579	5579	5579	5579
	ft/in	18'4"	18'4"	18'4"	18'4"
Turning Radius – Outside Corner of Racked Bucket, Carry Position (§)	mm	6727	6771	6771	6727
	ft/in	22'1"	22'2"	22'2"	22'1"
Static Tipping Load Straight *	kg	13 245	12 891	12 734	12 692
	lb	29,602	28,425	28,078	27,986
Static Tipping Load Full 40° Turn	kg	11 730	10 866	10 709	10 689
	lb	25,865	23,960	23,613	23,569
Breakout Force ** (§)	kN	159	190	175	176
	lb	35,775	42,750	39,375	39,600
Operating Weight * (§)	kg	19 397	19 179	19 344	19 249
	lb	42,770	42,290	42,654	42,444

\* Static tipping loads and operating weights shown are based on standard machine configuration with 23.5R25 tires, full fuel tank, coolants, lubricants, air conditioner, ride control and operator.

\*\* Measured 102 mm (4.0") behind tip of cutting edge with bucket hinge pin as pivot point in accordance with SAE J732C.

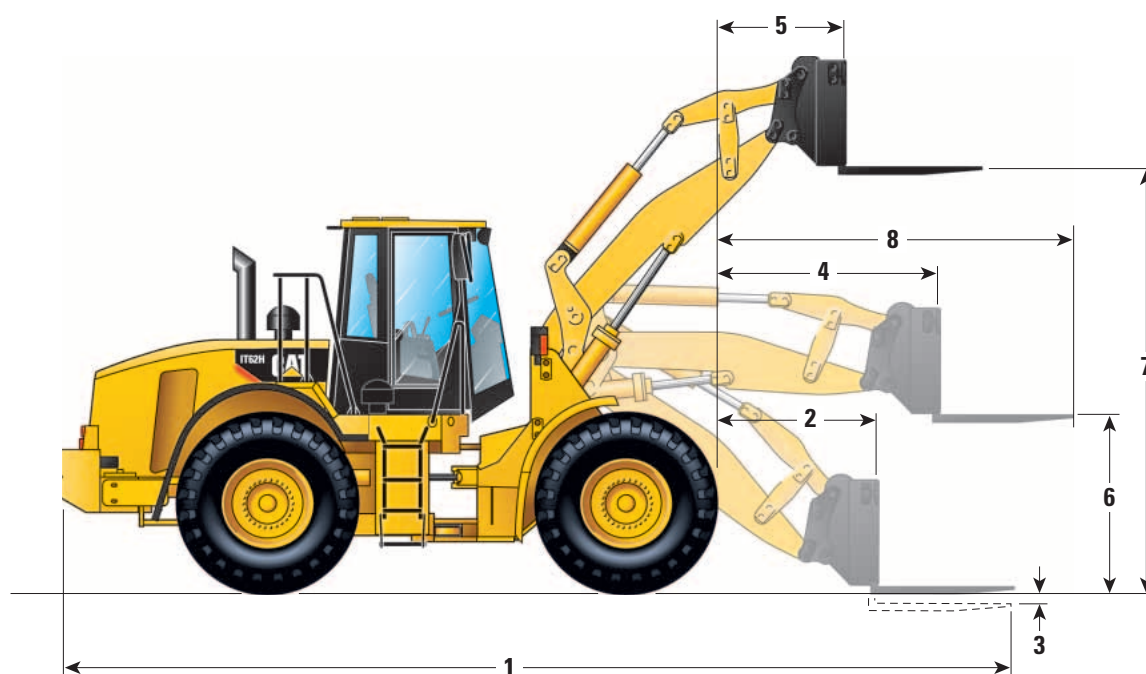
(§) Specifications and ratings conform to all applicable standards recommended by the Society of Automotive Engineers, including SAE Standard J732C governing loader ratings.



# IT62H Integrated Toolcarrier

## Dimensions – Pallet Fork

All dimensions are approximate.



Fork tine length	mm	1524
	in	60"
<b>1</b> Overall length, fork level on ground	mm	9116
	ft/in	29'11"
<b>2</b> Carriage reach, fork level on ground	mm	1404
	ft/in	4'7"
<b>3</b> Tine height, minimum lift, fork level	mm	82
	in	4"
<b>4</b> Carriage reach, lift arm and fork level	mm	1948
	ft/in	6'5"
<b>5</b> Carriage reach, maximum lift, fork level	mm	1090
	ft/in	3'7"
<b>6</b> Tine height, lift arm and fork level	mm	1757
	ft/in	5'9"
<b>7</b> Tine height, maximum lift, fork level	mm	3817
	ft/in	12'6"
<b>8</b> Overall reach, lift arm and fork level	mm	3472
	ft/in	11'5"
Static tipping load, straight with lift arm and forks level	kg	9373
	lb	20,667
Static tipping load, full 40° turn with lift arm and forks level	kg	7945
	lb	17,519
Operating weight * (§)	kg	19 008
	lb	41,913

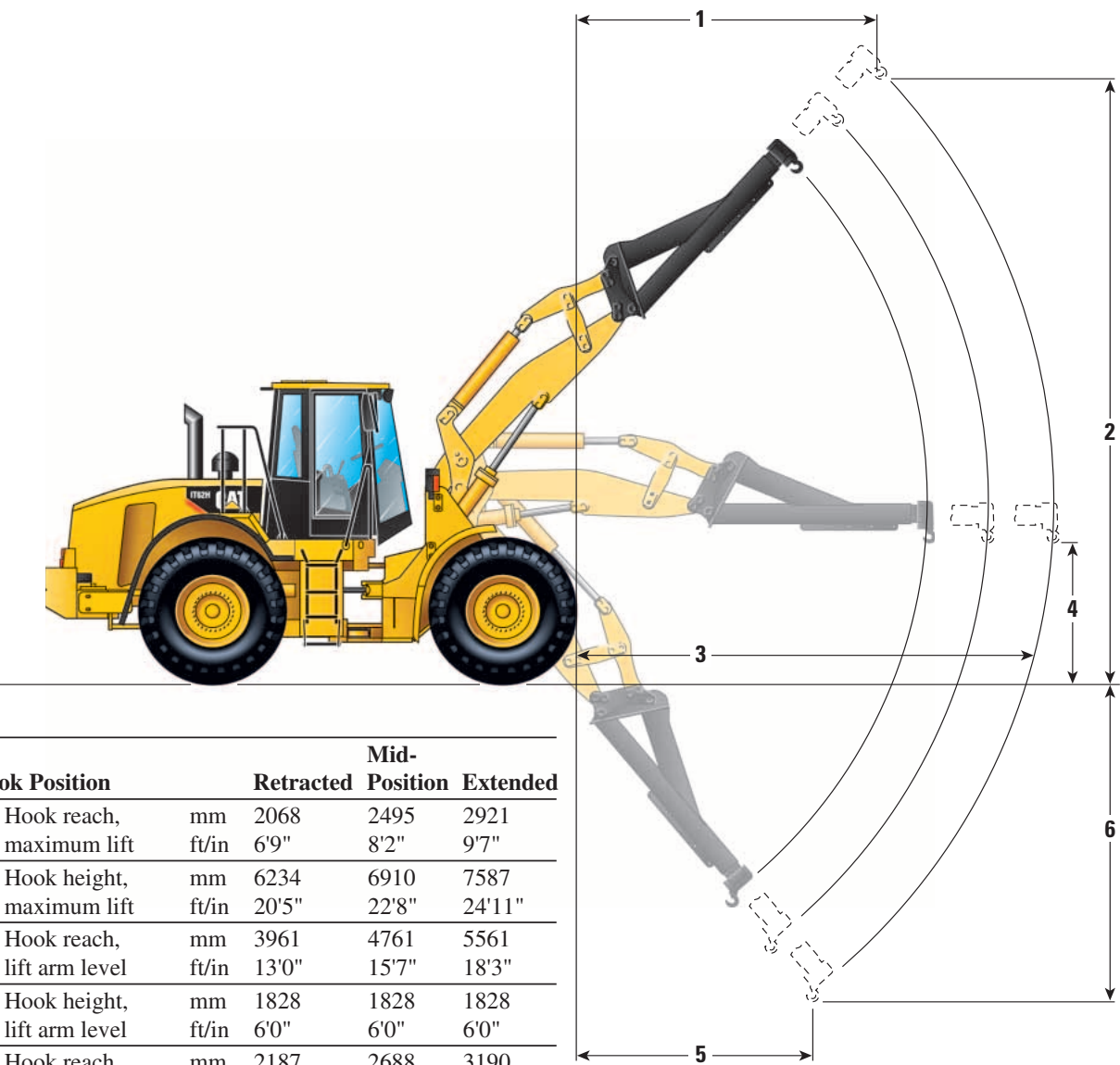
\* Static tipping loads and operating weights shown are based on standard machine configuration with 23.5R25 tires, full fuel tank, coolants, lubricants, air conditioner, ride control and operator.

(§) Specifications and ratings conform to all applicable standards recommended by the Society of Automotive Engineers, including SAE Standard J732C governing loader ratings.

# IT62H Integrated Toolcarrier

## Dimensions – Material Handling Arm

All dimensions are approximate.



Hook Position		Retracted	Mid-Position	Extended
1 Hook reach, maximum lift	mm	2068	2495	2921
	ft/in	6'9"	8'2"	9'7"
2 Hook height, maximum lift	mm	6234	6910	7587
	ft/in	20'5"	22'8"	24'11"
3 Hook reach, lift arm level	mm	3961	4761	5561
	ft/in	13'0"	15'7"	18'3"
4 Hook height, lift arm level	mm	1828	1828	1828
	ft/in	6'0"	6'0"	6'0"
5 Hook reach, minimum lift	mm	2187	2688	3190
	ft/in	7'2"	8'10"	10'6"
6 Hook height, minimum lift	mm	1915	2539	3163
	ft/in	6'3"	8'4"	10'5"
Static tipping load, straight	kg	7330	6292	5506
	lb	16,163	13,874	12,141
Static tipping load, full turn	kg	6276	5388	4715
	lb	13,839	11,881	10,397
Operating weight * (§)	kg	18 472	18 472	18 472
	lb	40,731	40,731	40,731

\* Static tipping loads and operating weights shown are based on standard machine configuration with 23.5R25 tires, full fuel tank, coolants, lubricants, air conditioner, ride control and operator.

(§) Specifications and ratings conform to all applicable standards recommended by the Society of Automotive Engineers, including SAE Standard J732C governing loader ratings.