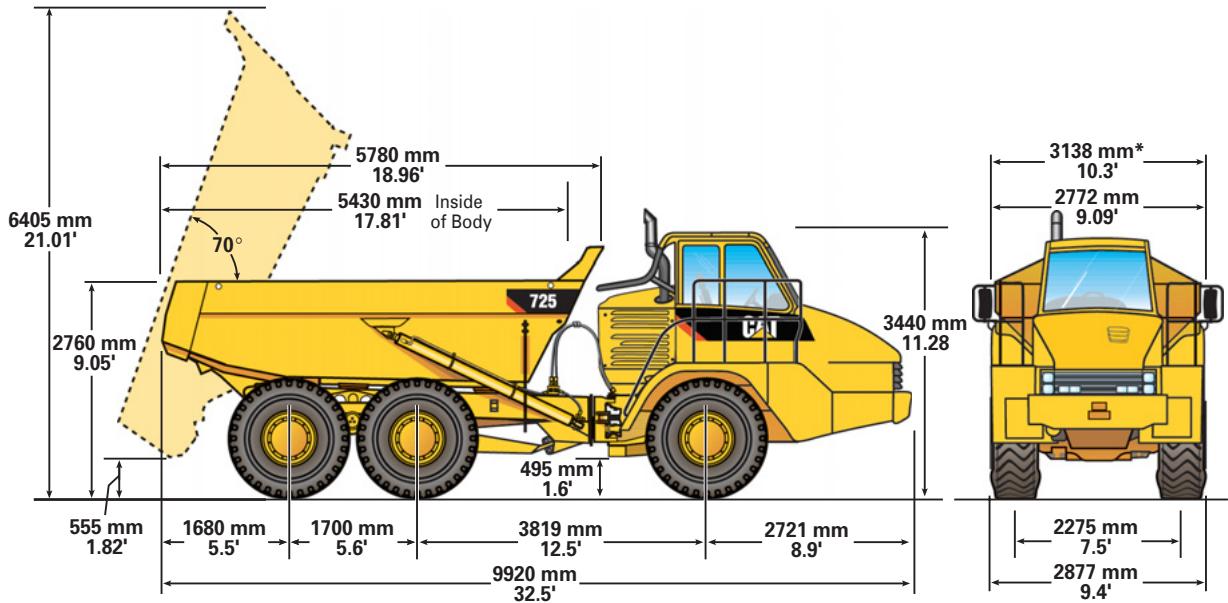


725 Articulated Truck

Dimensions



* if equipped with a scissor tailgate

Turning Circle

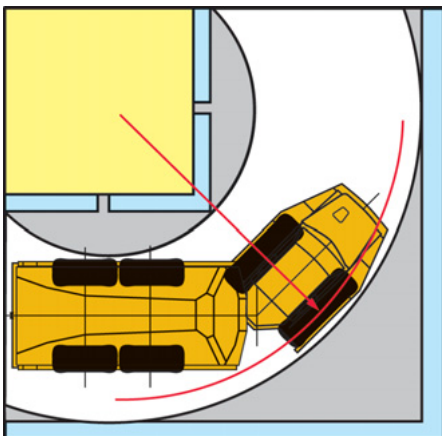
Dimensions are for machines equipped with 23.5R25 tires.

Turning dimensions

Steer angle — left/right	45°
SAE turning radius	7254 mm 286 in
Clearance radius	7605 mm 300 in
Inside radius	3710 mm 146 in
Aisle width	4980 mm 196 in

Steering

Lock to Lock 4.75 seconds @ 60 rpm



Optimal Loader/Truck Pass Matching

Hydraulic Excavators	345C	330D	325D
Passes	3-4	4-5	5-6

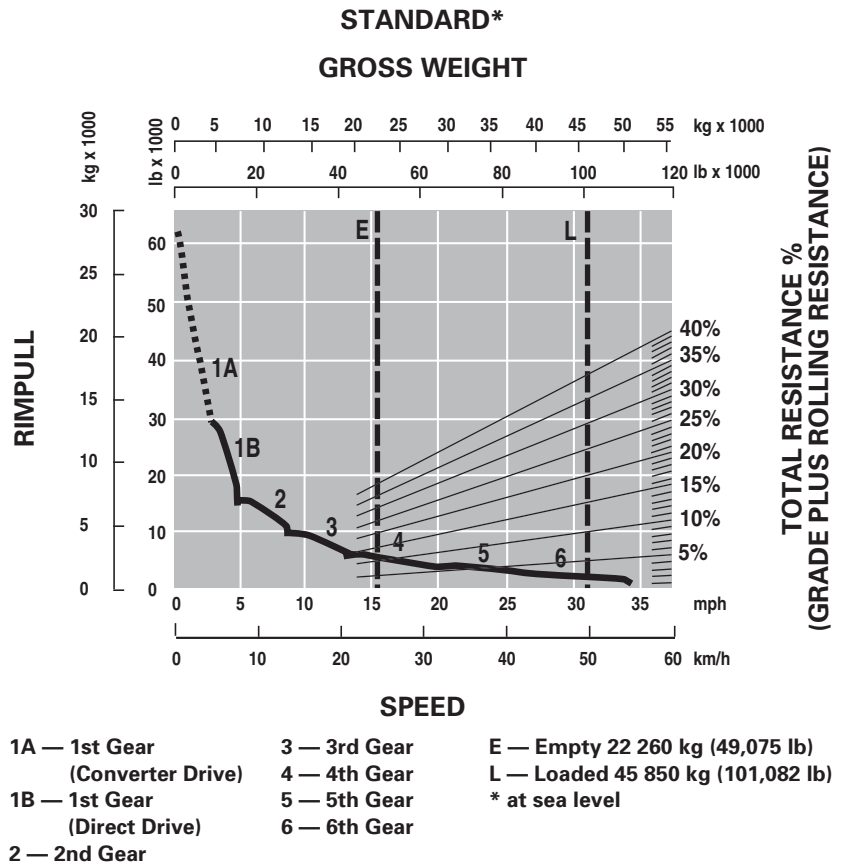
Wheel Loaders	972H	966H	962H	950H
Passes	3	3-4	3-4	4

An optimum system match gives you a major productivity advantage. The 725 is an excellent match for the Cat 345C, 330D and 325D Hydraulic Excavators; and Cat 972H, 966H, 962H and 950H Wheel Loaders. This results in increased production and lower system costs per unit of volume moved.

725 Articulated Truck

Gradeability/Speed/Rimpull

To determine performance, read from Gross Weight down to % Total Resistance. Total Resistance equals actual % grade plus 1% for each 10 kg/metric ton (20 lb/ton) of Rolling Resistance. From this point, read horizontally to the curve with the highest attainable speed range. Then, go down to Maximum Speed. Usable Rimpull depends on traction available.



Retarding Performance

To determine performance, read from Gross Weight down to % Effective Grade. Effective Grade equals actual % favorable grade plus 1% for each 10 kg/metric ton (20 lb/ton) of Rolling Resistance. From this point, read horizontally to the curve with the highest attainable speed range. Then, go down to Maximum Speed. Retarding effect on these curves represents full application of the retarder.

