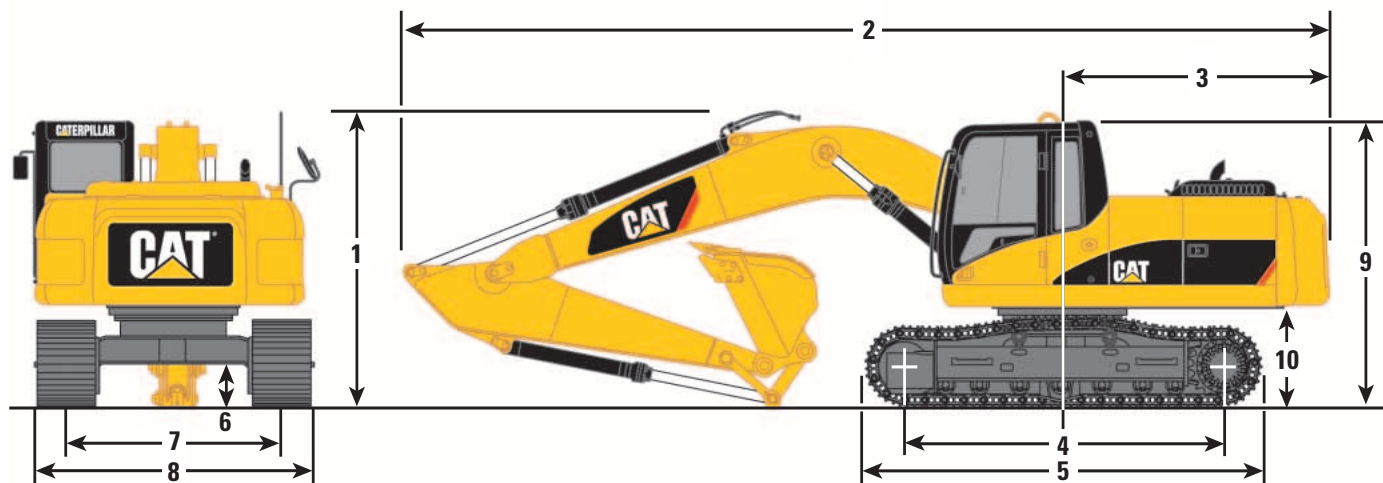


320D L Hydraulic Excavator

Dimensions

All dimensions are approximate.



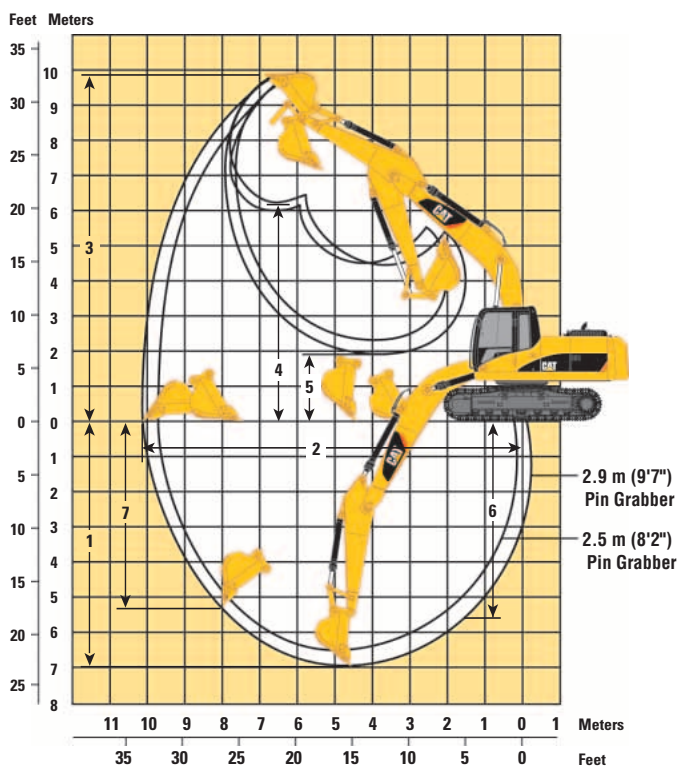
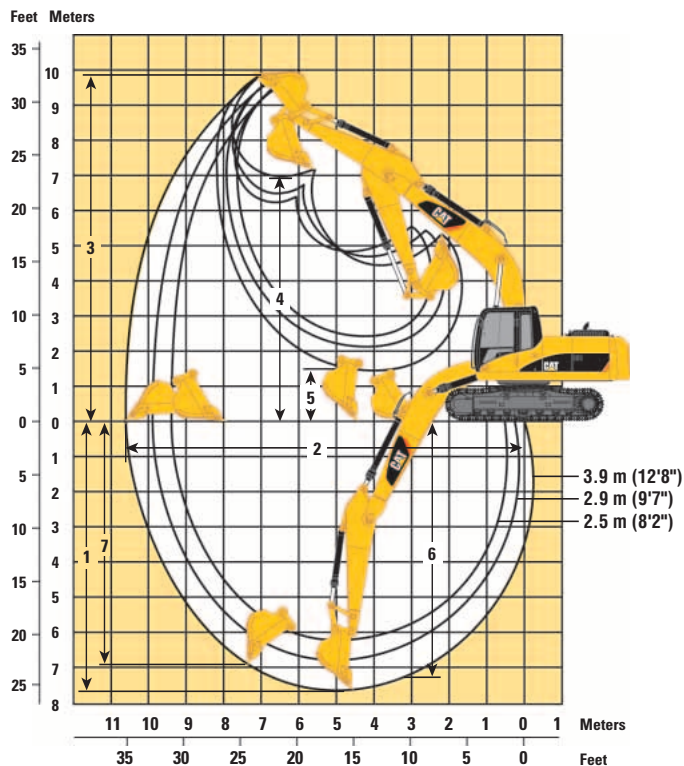
Boom Options	Reach 5.68 (18'7")	Reach 5.68 (18'7")	Reach 5.68 (18'7")	Mass 5.2 m (17'1")	Super Long Reach 8.85 m (29'1")
Stick Options	R3.9B1 m (12'8")	R2.9B1 m (9'7") Std/SA	R2.5B1 m (8'2") Std/SA	M2.4CB2 m (7'10")	6.28 m (20'7")
1 Shipping Height	*3740 mm (12'3")	3030 mm (9'11")	3050 mm (10'0")	3280 mm (10'9")	3190 mm (10'6")
2 Shipping Length	9440 mm (31'0")	9460 mm (31'0")	9460 mm (31'0")	9050 mm (29'8")	12 680 mm (41'7")
3 Tail Swing Radius	2750 mm (9'0")	2750 mm (9'0")	2750 mm (9'0")	2750 mm (9'0")	2750 mm (9'0")
4 Length to Center of Rollers					
Standard	3265 mm (10'9")	3265 mm (10'9")	3265 mm (10'9")	3265 mm (10'9")	n/a
Long	3650 mm (12'0")	3650 mm (12'0")	3650 mm (12'0")	3650 mm (12'0")	3650 mm (12'0")
5 Track Length					
Standard	4075 mm (13'4")	4075 mm (13'4")	4075 mm (13'4")	4075 mm (13'4")	n/a
Long	4455 mm (14'7")	4455 mm (14'7")	4455 mm (14'7")	4455 mm (14'7")	4455 mm (14'7")
6 Ground Clearance	450 mm (1'6")	450 mm (1'6")	450 mm (1'6")	450 mm (1'6")	450 mm (1'6")
7 Track Gauge					
Standard	2200 mm (7'3")	2200 mm (7'3")	2200 mm (7'3")	2200 mm (7'3")	n/a
Long	2380 mm (7'10")	2380 mm (7'10")	2380 mm (7'10")	2380 mm (7'10")	2380 mm (7'10")
8 Transport Width	800 mm Shoes	700 mm Shoes	600 mm Shoes		800 mm Shoes
Standard	3000 mm (9'10")	2900 mm (9'6")	2800 mm (9'2")	2800 mm (9'2")	2800 mm (9'2")
Long	3180 mm (10'5")	3080 mm (10'1")	2980 mm (9'9")	2980 mm (9'9")	2980 mm (9'9")
9 Cab Height	2950 mm (9'8")	2950 mm (9'8")	2950 mm (9'8")	2950 mm (9'8")	2950 mm (9'8")
10 Counterweight Clearance	1020 mm (3'4")	1020 mm (3'4")	1020 mm (3'4")	1020 mm (3'4")	1020 mm (3'4")

* Removing the bucket and quick coupler changes the shipping height to 3390 mm (11'1").

320D L Hydraulic Excavator

Reach Excavator Working Ranges

Reach (R) boom configuration



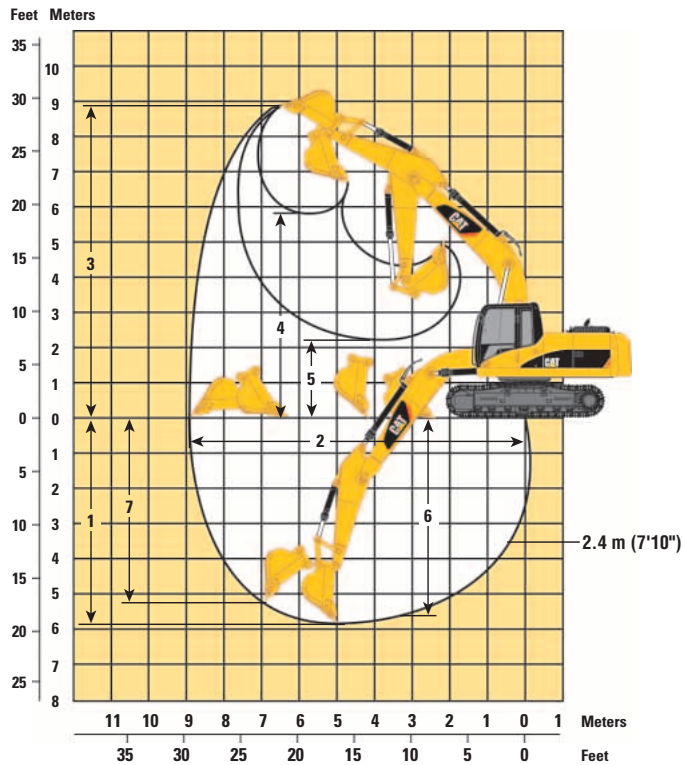
Boom Options	Reach 5.68 m (18'7")	Reach 5.68 m (18'7")	Reach 5.68 m (18'7")	Reach 5.68 m (18'7")	Reach 5.68 m (18'7")
Stick Options	R3.9B1 m (12'8")	R2.9B1 m (9'7")	R2.5B1 m (8'2")	R2.9B1 m (9'7")	R2.5B1 m (8'2")
Bucket	1.0 m ³ (1.31 yd ³)	1.0 m ³ (1.31 yd ³)	1.0 m ³ (1.31 yd ³)	Pin Grabber Quick Coupler with 1.0 m ³ (1.31 yd ³)	Pin Grabber Quick Coupler with 1.0 m ³ (1.31 yd ³)
1 Maximum Digging Depth	7660 mm (25'2")	6720 mm (22'1")	6300 mm (20'8")	6980 mm (22'11")	6560 mm (21'6")
2 Maximum Reach at Ground Level	10 760 mm (35'4")	9860 mm (32'4")	9460 mm (31'0")	10 120 mm (33'2")	9730 mm (31'11")
3 Maximum Cutting Height	9940 mm (32'7")	9490 mm (31'2")	9290 mm (30'6")	9720 mm (31'11")	9520 mm (31'0")
4 Maximum Loading Height	6940 mm (22'9")	6490 mm (21'4")	6290 mm (20'8")	6230 mm (20'5")	6030 mm (19'9")
5 Minimum Loading Height	1230 mm (4'0")	2170 mm (7'1")	2590 mm (8'6")	1910 mm (6'3")	2330 mm (7'8")
6 Maximum Depth Cut for 2440 m (8') Level Bottom	7270 mm (23'10")	6370 mm (20'11")	5950 mm (19'6")	5680 mm (18'8")	5290 mm (17'4")
7 Maximum Vertical Wall Digging Depth	6970 mm (22'10")	6060 mm (19'11")	5650 mm (18'6")	5380 mm (17'8")	4990 mm (16'4")

All measurements are approximate

320D L Hydraulic Excavator

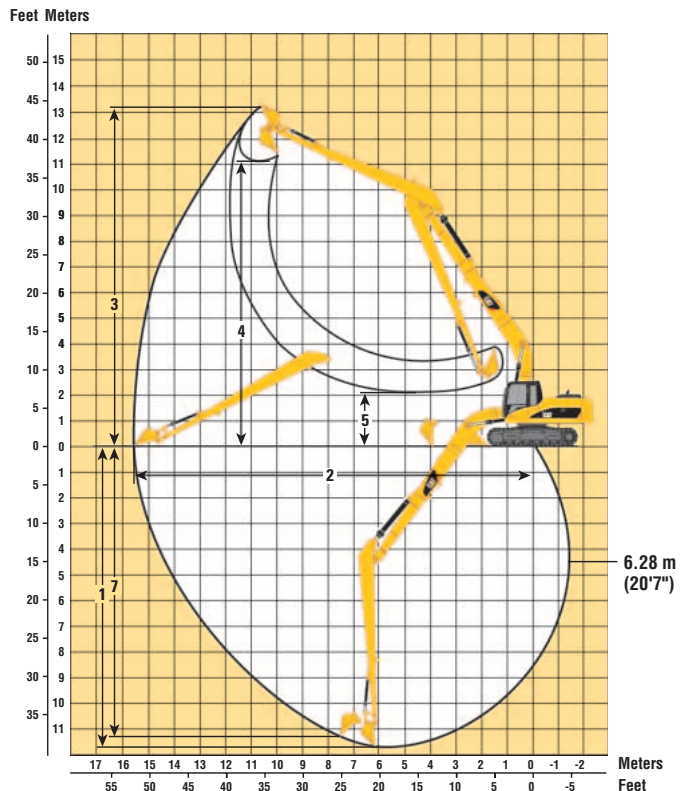
Mass Excavator Working Ranges

Mass (M) boom configuration



Reach Excavator Working Ranges

Reach (R) boom configuration



Boom Options

Mass
5.2 m (17'1")

Super Long Reach
8.85 m (29'1")

Stick Options

M2.4CB2 m (7'10")

6.28 m (20'7")

Bucket

1.35 m³ (1.77 yd³)

0.46 m³ (0.80 yd³)

1 Maximum Digging Depth

5890 mm (19'4")

11 740 mm (38'6")

2 Maximum Reach at Ground Level

8960 mm (29'5")

15 590 mm (51'2")

3 Maximum Cutting Height

8930 mm (29'4")

13 240 mm (43'5")

4 Maximum Loading Height

5720 mm (18'9")

11 150 mm (36'7")

5 Minimum Loading Height

2230 mm (7'4")

2100 mm (6'11")

6 Maximum Depth Cut for
2440 m (8') Level Bottom

5660 mm (18'7")

—

7 Maximum Vertical Wall Digging Depth

5360 mm (17'7")

11 300 mm (37'1")

All measurements are approximate

320D L Hydraulic Excavator

320D Bucket and Stick Forces

General Purpose Buckets

Stick	R3.9B1		R2.9B1		R2.9B1 w/Coupler		R2.5B1		R2.5B1 w/Coupler		M2.4CB2	
	kN	lb	kN	lb	kN	lb	kN	lb	kN	lb	kN	lb
Bucket Digging Force (ISO)	140	31,361	140	31,361	116	26,145	140	31,361	116	26,145	175	39,319
Stick Digging Force (ISO)	89	20,098	106	23,897	100	22,436	118	26,460	110	24,706	127	28,438
Bucket Digging Force (SAE)	125	28,079	125	28,079	108	24,189	125	28,079	108	24,189	158	35,452
Stick Digging Force (SAE)	87	19,648	103	23,223	98	22,009	114	25,628	107	24,144	123	27,539

Power Buckets

Stick	R3.9B1		R2.9B1		R2.9B1 w/Coupler		R2.5B1		R2.5B1 w/Coupler		M2.4CB2	
	kN	lb	kN	lb	kN	lb	kN	lb	kN	lb	kN	lb
Bucket Digging Force (ISO)	163	36,711	163	36,711	124	27,809	163	36,711	124	27,809	196	44,040
Stick Digging Force (ISO)	91	20,503	109	24,482	102	22,863	121	27,202	112	25,224	130	29,180
Bucket Digging Force (SAE)	144	32,417	144	32,417	113	25,493	144	32,417	113	25,493	172	38,645
Stick Digging Force (SAE)	89	19,963	106	23,717	99	22,301	117	26,235	109	24,527	125	28,034

Heavy Duty/Rock Buckets

Stick	R3.9B1		R2.9B1		R2.9B1 w/Coupler		R2.5B1		R2.5B1 w/Coupler		M2.4CB2	
	kN	lb	kN	lb	kN	lb	kN	lb	kN	lb	kN	lb
Bucket Digging Force (ISO)	140	31,563	140	31,563	117	26,258	140	31,563	117	26,258	175	39,319
Stick Digging Force (ISO)	90	20,120	106	23,920	100	22,458	118	26,505	110	24,729	127	28,438
Bucket Digging Force (SAE)	125	28,079	125	28,079	107	24,144	125	28,079	108	24,212	155	34,800
Stick Digging Force (SAE)	87	19,626	103	23,200	98	21,964	114	25,606	107	24,100	122	27,359

Major Component Weights

	kg	lb	
Base machine with counterweight (without front linkage)	STD undercarriage with 600 mm shoe	16 260	35,847
	L undercarriage with 800 mm shoe	17 470	38,515
Two boom cylinders (Each)	182	401	
Counterweight			
Standard	3860	8,510	
Super Long Reach	4830	10,648	
Boom (includes lines, pins and stick cylinder)			
Reach boom 5.7 m (18'5")	1640	3,616	
Mass boom 5.2 m (17'1")	1670	3,682	
Super Long Reach Boom – 8.85 m (29'1")	2180	4,806	
Stick (includes lines, pins, bucket cylinder and linkage)			
R3.9 (12'8")	1063	2,344	
R2.9 (9'7")	818	1,803	
R2.5 (8'2")	779	1,717	
M2.4 (7'10")	985	2,172	
Super Long Reach Stick – 6.82 m (20'7")	1600	3,527	
Undercarriage [includes Carbody, Swing bearing, Track frame, Rollers, Idlers, Steps, Guards, Final drive]	STD undercarriage with 600 mm shoe	6670	14,705
	L undercarriage with 800 mm shoe	7880	17,372

320D L Hydraulic Excavator

320D L Bucket Specifications and Compatibility

	Adapter	Capacity*		Width		Tip Radius		Weight (w/o tips)		Teeth Qty	Reach Boom Stick					Mass Boom Stick M2.4CB2
		m ³	yd ³	mm	in	mm	in	kg	lb		R3.9B1	R2.9B1	R2.9B1 w/QC	R2.5B1	R2.5B1 w/QC	
B Family																
General Purpose – Capacity	K80	0.55	0.72	610	24	1565	61.6	629	1,387	3	●	●	●	●	●	—
Capacity	K80	0.75	0.98	762	30	1565	61.6	718	1,583	4	●	●	●	●	●	—
	K80	0.95	1.24	914	36	1565	61.6	790	1,742	5	◐	●	●	●	●	—
	K80	1.17	1.53	1067	42	1565	61.6	852	1,878	5	○	◐	◐	●	◐	—
	K80	1.39	1.82	1219	48	1565	61.6	926	2,041	6	◐	○	○	◐	○	—
	K80	1.57	2.05	1372	54	1565	61.6	1000	2,205	6	∴	◐	◐	○	◐	—
Heavy Duty	K90	0.47	0.61	610	24	1578	62.1	650	1,433	3	●	●	●	●	●	—
	K90	0.64	0.84	762	30	1578	62.1	743	1,638	4	●	●	●	●	●	—
	K90	0.82	1.07	914	36	1578	62.1	813	1,792	5	●	●	●	●	●	—
	K90	1.00	1.31	1067	42	1578	62.1	866	1,909	5	○	●	●	●	●	—
	K90	1.19	1.56	1219	48	1578	62.1	956	2,108	6	◐	◐	○	●	◐	—
Heavy Duty Rock	K90	1.38	1.80	1372	54	1578	62.1	1030	2,271	6	∴	○	◐	◐	○	—
	K90	0.54	0.70	610	24	1578	62.1	696	1,534	3	●	●	●	●	●	—
	K90	0.77	1.00	762	30	1578	62.1	781	1,722	4	●	●	●	●	●	—
	K90	0.84	1.10	914	36	1578	62.1	863	1,903	5	●	●	●	●	●	—
	K90	1.07	1.40	1067	42	1578	62.1	933	2,057	5	○	●	◐	●	●	—
Heavy Duty Power	K90	0.79	1.03	914	36	1458	57.4	811	1,788	5	●	●	●	●	●	—
	K90	0.96	1.26	1067	42	1458	57.4	875	1,929	5	◐	●	●	●	●	—
Ditch Cleaning	K90	1.14	1.49	1219	48	1458	57.4	954	2,103	6	◐	◐	◐	●	◐	—
	n/a	1.02	1.33	1524	60	1139	44.8	726	1,601	0	◐	●	●	●	●	—
	n/a	1.24	1.62	1830	72	1139	44.8	823	1,814	0	○	◐	◐	●	◐	—
CB Family																
General Purpose – Capacity	K90	0.63	0.82	610	24	1656	65.2	700	1,543	3	—	—	—	—	—	●
Capacity	K90	0.86	1.12	762	30	1656	65.2	809	1,784	4	—	—	—	—	—	●
	K90	1.09	1.43	914	36	1656	65.2	903	1,992	5	—	—	—	—	—	●
	K90	1.34	1.75	1067	42	1656	65.2	977	2,153	5	—	—	—	—	—	●
	K90	1.58	2.07	1219	48	1656	65.2	1064	2,345	6	—	—	—	—	—	○
	K90	1.83	2.39	1372	54	1656	65.2	1151	2,537	7	—	—	—	—	—	◐
Heavy Duty Rock	K100	0.53	0.69	610	24	1686	66.4	751	1,657	3	—	—	—	—	—	●
	K100	0.73	0.95	762	30	1686	66.4	829	1,828	3	—	—	—	—	—	●
	K100	0.93	1.22	914	36	1686	66.4	944	2,080	4	—	—	—	—	—	●
	K100	1.14	1.49	1067	42	1686	66.4	1025	2,259	5	—	—	—	—	—	●
	K100	1.35	1.77	1219	48	1686	66.4	1095	2,414	5	—	—	—	—	—	◐
	K100	1.57	2.05	1372	54	1686	66.4	1181	2,604	6	—	—	—	—	—	○
	K100	1.78	2.33	1524	60	1686	66.4	1268	2,794	7	—	—	—	—	—	◐
Heavy Duty Power	K100	1.99	2.60	1676	66	1686	66.4	1340	2,954	7	—	—	—	—	—	◐
	K100	0.73	0.95	762	30	1686	66.4	936	2,064	3	—	—	—	—	—	●
Heavy Duty Rock	K100	0.93	1.22	914	36	1686	66.4	1035	2,281	4	—	—	—	—	—	●
	K100	1.14	1.49	1067	42	1686	66.4	1126	2,483	5	—	—	—	—	—	●
Heavy Duty Power	K100	1.35	1.77	1219	48	1686	66.4	1211	2,670	5	—	—	—	—	—	◐
	K100	1.12	1.46	1067	42	1592	62.7	1013	2,232	5	—	—	—	—	—	●
Heavy Duty Power	K100	1.33	1.74	1219	48	1592	62.7	1089	2,401	5	—	—	—	—	—	●
	K100	1.53	2.00	1372	54	1592	62.7	1180	2,601	6	—	—	—	—	—	○
Ditch Cleaning	n/a	1.25	1.63	1524	60	1262	49.7	739	1,629	—	—	—	—	—	—	●
	n/a	1.53	2.00	1830	72	1262	49.7	837	1,845	—	—	—	—	—	—	◐

Assumptions for maximum material density rating:

1. Front linkage fully extended at ground line
2. Machine positioned 90 degrees over the side
3. Bucket curled
4. 100% Bucket Fill Factor

Please consult with your Caterpillar dealer personnel for optimum selection of buckets and work tools that best match your application.

* Based on SAE J296, some calculations of capacity specs fall on borderlines.

Rounding may allow two buckets to have the same English rating, but different metric ratings.

- 2100 kg/m³ (3,500 lb/yd³) max material density
- ◐ 1800 kg/m³ (3,000 lb/yd³) max material density
- 1500 kg/m³ (2,500 lb/yd³) max material density
- 1200 kg/m³ (2,000 lb/yd³) max material density
- ∴ Not Recommended
- Not Available/Recommended

320D L Hydraulic Excavator

320D Bucket Specifications and Compatibility

	Adapter	Capacity*		Width		Tip Radius		Weight (w/o tips)		Teeth Qty	Reach Boom Stick			Mass Boom Stick M2.4CB2
		m ³	yd ³	mm	in	mm	in	kg	lb		R3.9B1	R2.9B1	R2.5B1	
B Family														
General Purpose – Capacity	K80	0.55	0.72	610	24	1565	61.6	629	1387	3	●	●	●	—
	K80	0.75	0.98	762	30	1565	61.6	718	1583	4	●	●	●	—
	K80	0.95	1.24	914	36	1565	61.6	790	1742	5	○	●	●	—
	K80	1.17	1.53	1067	42	1565	61.6	852	1878	5	○	○	●	—
	K80	1.39	1.82	1219	48	1565	61.6	926	2041	6	∴	●	○	—
	K80	1.57	2.05	1372	54	1565	61.6	1000	2205	6	∴	∴	●	—
Heavy Duty	K90	0.47	0.61	610	24	1578	62.1	650	1433	3	●	●	●	—
	K90	0.64	0.84	762	30	1578	62.1	743	1638	4	●	●	●	—
	K90	0.82	1.07	914	36	1578	62.1	813	1792	5	○	●	●	—
	K90	1.00	1.31	1067	42	1578	62.1	866	1909	5	●	●	●	—
	K90	1.19	1.56	1219	48	1578	62.1	956	2108	6	∴	○	○	—
	K90	1.38	1.80	1372	54	1578	62.1	1030	2271	6	∴	●	●	—
Heavy Duty Rock	K90	0.54	0.70	610	24	1578	62.1	696	1534	3	●	●	●	—
	K90	0.77	1.00	762	30	1578	62.1	781	1722	4	●	●	●	—
	K90	0.84	1.10	914	36	1578	62.1	863	1903	5	○	●	●	—
	K90	1.07	1.40	1067	42	1578	62.1	933	2057	5	●	○	●	—
Heavy Duty Power	K90	0.79	1.03	914	36	1458	57.4	811	1788	5	●	●	●	—
	K90	0.96	1.26	1067	42	1458	57.4	875	1929	5	○	●	●	—
	K90	1.14	1.49	1219	48	1458	57.4	954	2103	6	∴	○	●	—
Ditch Cleaning	n/a	1.02	1.33	1524	60	1139	44.8	726	1601	0	○	●	●	—
	n/a	1.24	1.62	1830	72	1139	44.8	823	1814	0	●	○	●	—
CB Family														
General Purpose – Capacity	K90	0.63	0.82	610	24	1656	65.2	700	1543	3	—	—	—	●
	K90	0.86	1.12	762	30	1656	65.2	809	1784	4	—	—	—	●
	K90	1.09	1.43	914	36	1656	65.2	903	1992	5	—	—	—	●
	K90	1.34	1.75	1067	42	1656	65.2	977	2153	5	—	—	—	○
	K90	1.58	2.07	1219	48	1656	65.2	1064	2345	6	—	—	—	●
	K90	1.83	2.39	1372	54	1656	65.2	1151	2537	7	—	—	—	∴
Heavy Duty	K100	0.53	0.69	610	24	1686	66.4	751	1657	3	—	—	—	●
	K100	0.73	0.95	762	30	1686	66.4	829	1828	3	—	—	—	●
	K100	0.93	1.22	914	36	1686	66.4	944	2080	4	—	—	—	●
	K100	1.14	1.49	1067	42	1686	66.4	1025	2259	5	—	—	—	●
	K100	1.35	1.77	1219	48	1686	66.4	1095	2414	5	—	—	—	○
	K100	1.57	2.05	1372	54	1686	66.4	1181	2604	6	—	—	—	●
	K100	1.78	2.33	1524	60	1686	66.4	1268	2794	7	—	—	—	∴
	K100	1.99	2.60	1676	66	1686	66.4	1340	2954	7	—	—	—	∴
Heavy Duty Rock	K100	0.73	0.95	762	30	1686	66.4	936	2064	3	—	—	—	●
	K100	0.93	1.22	914	36	1686	66.4	1035	2281	4	—	—	—	●
	K100	1.14	1.49	1067	42	1686	66.4	1126	2483	5	—	—	—	●
	K100	1.35	1.77	1219	48	1686	66.4	1211	2670	5	—	—	—	○
Heavy Duty Power	K100	1.12	1.46	1067	42	1592	62.7	1013	2232	5	—	—	—	●
	K100	1.33	1.74	1219	48	1592	62.7	1089	2401	5	—	—	—	○
	K100	1.53	2.00	1372	54	1592	62.7	1180	2601	6	—	—	—	●
Ditch Cleaning	n/a	1.25	1.63	1524	60	1262	49.7	739	1629	—	—	—	—	●
	n/a	1.53	2.00	1830	72	1262	49.7	837	1845	—	—	—	—	○

Assumptions for maximum material density rating:

1. Front linkage fully extended at ground line
2. Machine positioned 90 degrees over the side
3. Bucket curled
4. 100% Bucket Fill Factor

Please consult with your Caterpillar dealer personnel for optimum selection of buckets and work tools that best match your application.

* Based on SAE J296, some calculations of capacity specs fall on borderlines.

Rounding may allow two buckets to have the same English rating, but different metric ratings.

- 2100 kg/m³ (3,500 lb/yd³) max material density
- 1800 kg/m³ (3,000 lb/yd³) max material density
- 1500 kg/m³ (2,500 lb/yd³) max material density
- 1200 kg/m³ (2,000 lb/yd³) max material density
- ∴ Not Recommended
- Not Available/Recommended

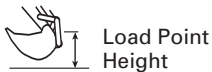
320D L Hydraulic Excavator

320D/320D L Work Tool Matching Guide

Boom Options		Reach Boom 5.7 m (18'5")		Mass Boom 5.2 m (17'1")
Stick Options	R3.9B1 (12'8")	R2.9B1 (9'7")	R2.5B1 (8'2")	M2.4CB2 (7'10")
Hydraulic Hammer	H115s/ H120Cs/ H130s	H115s/ H120Cs/ H130s	H115s/ H120Cs/ H130s	H115s/ H120Cs/ H130s
Vibratory Plate Compactor	CVP110	CVP110	CVP110	CVP110
Multi-Processor	MP15	MP15	MP15	MP15
360 Scrap Shear	S320	S320	S320	S320
Trash Grapple	2.7 m ³ (3.5 yd ³)	2.7 m ³ (3.5 yd ³)	2.7 m ³ (3.5 yd ³)	2.7 m ³ (3.5 yd ³)
Contractor's Grapple	yes	yes	yes	n/a
Hydraulic Thumb	yes	yes	yes	n/a
Dedicated Quick Coupler	yes	yes	yes	yes
Pin-Grabber Quick Coupler	yes	yes	yes	yes

320D L Hydraulic Excavator

Reach Boom Lift Capacities



Load Point Height



Load Radius Over Front



Load Radius Over Side
















Load at Maximum Reach

R3.9B1 STICK – 3.9 m (12'10")
BUCKET – 0.8 m³ (1.07 yd³)

UNDERCARRIAGE – Long
SHOES – 800 mm (32") triple grouser

BOOM – 5.7 m (18'9")
COUNTERWEIGHT – 3.87 ton (8,532 lb)

		1.5 m (5.0 ft)		3.0 m (10.0 ft)		4.5 m (15.0 ft)		6.0 m (20.0 ft)		7.5 m (25.0 ft)		9.0 m (30.0 ft)				m ft
																
7.5 m 25.0 ft	kg lb									*2900 *5,850	*2900 *5,850			*1550 *3,450	*1550 *3,450	8.94 29.05
6.0 m 20.0 ft	kg lb									*3300 *7,250	3200 6,850			*1500 *3,250	*1500 *3,250	9.78 31.96
4.5 m 15.0 ft	kg lb									*3600 *7,850	3150 6,700	*2750 *5,250	2100 4,500	*1450 *3,200	*1450 *3,200	10.29 33.71
3.0 m 10.0 ft	kg lb							*4600 *9,950	4500 9,700	*4100 *8,900	3000 6,400	3600 *7,300	2050 4,400	*1550 *3,350	1500 3,250	10.52 34.52
1.5 m 5.0 ft	kg lb			*11 950 *27,200	*11 950 *27,200	*7650 *16,450	6700 14,400	*5650 *12,250	4200 9,000	*4650 *10,150	2850 6,100	3500 7,500	2000 4,250	*1650 *3,600	1450 3,200	10.50 34.46
Ground Line	kg lb			*7450 *17,150	*7450 *17,150	*9250 *19,950	6200 13,300	*6600 *14,250	3950 8,400	4700 10,050	2700 5,750	3450 7,350	1950 4,100	*1850 *4,050	1500 3,300	10.23 33.55
-1.5 m -5.0 ft	kg lb	*4800 *10,700	*4800 *10,700	*9050 *20,550	*9050 *20,550	*10 050 *21,750	5900 12,650	6600 14,150	3750 8,050	4600 9,800	2600 5,550	*3350	1900	*2150 *4,750	1650 3,650	9.67 31.69
-3.0 m -10.0 ft	kg lb	*7700 *17,300	*7700 *17,300	*12 400 *28,150	11 750 25,100	*10 100 *21,850	5850 12,500	6550 14,000	3700 7,900	4550 9,750	2600 5,500			*2700 *6,000	2050 4,450	8.78 28.69
-4.5 m -15.0 ft	kg lb	*11 400 *25,700	*11 400 *25,700	*13 900 *29,950	*12 000 25,700	*9350 *20,050	5950 12,750	6600 14,150	3750 8,050					*3800 *8,500	2800 6,300	7.41 24.06
-6.0 m -20.0 ft	kg lb			*10 600 *22,350	*10 600 *22,350	*7150 *14,950	6200 13,400							*5050 *11,100	4350 10,000	5.66 18.13


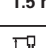
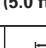
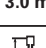
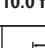
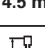
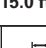
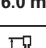
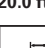
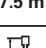
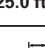
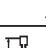

* Limited by hydraulic capacity rather than tipping load. The above loads are in compliance with SAE hydraulic excavator lift capacity rating standard J1097. They do not exceed 87% of hydraulic lifting capacity or 75% of tipping capacity. Weight of all lifting accessories must be deducted from the above lifting capacities.

Heavy Lift – On

R2.9B1 STICK – 2.9 m (9'7")
BUCKET – 0.8 m³ (1.18 yd³)

UNDERCARRIAGE – Long
SHOES – 800 mm (32") triple grouser

BOOM – 5.7 m (18'9")
COUNTERWEIGHT – 3.87 ton (8,532 lb)

		1.5 m (5.0 ft)		3.0 m (10.0 ft)		4.5 m (15.0 ft)		6.0 m (20.0 ft)		7.5 m (25.0 ft)				m ft
														
7.5 m 25.0 ft	kg lb											*2000 *4,450	*2000 *4,450	7.84 25.38
6.0 m 20.0 ft	kg lb									*3650	3200	*1900 *4,200	*1900 *4,200	8.81 28.74
4.5 m 15.0 ft	kg lb							*4700 *10,150	*4700 10,050	*4400 *9,600	3100 6,650	*1900 *4,150	*1900 *4,150	9.38 30.71
3.0 m 10.0 ft	kg lb			*11 300 *24,000	*11 300 *24,000	*7150 *15,350	*7150 *15,350	*5550 *12,050	4450 9,550	*4800 *10,450	3050 6,450	*1950 *4,300	1900 4,150	9.64 31.61
1.5 m 5.0 ft	kg lb					*8950 *19,300	6550 14,100	*6500 *14,050	4200 9,000	4900 10,500	2900 6,200	*2100 *4,650	1850 4,050	9.61 31.54
Ground Line	kg lb			*6400 *14,650	*6400 *14,650	*10 100 *21,850	6200 13,350	6850 14,700	4000 8,600	4800 10,250	2800 6,000	*2400 *5,250	1950 4,250	9.30 30.52
-1.5 m -5.0 ft	kg lb	*5900 *13,200	*5900 *13,200	*9950 *22,600	*9950 *22,600	*10 450 *22,600	6050 13,050	6750 14,450	3900 8,350	4750 10,150	2750 5,900	*2800 *6,200	2200 4,800	8.68 28.44
-3.0 m -10.0 ft	kg lb	*9950 *22,300	*9950 *22,300	*14 650 *31,700	*14 650 *31,700	*9950 *21,500	6100 13,100	6750 14,500	3900 8,400			*3600 *8,000	2750 6,100	7.65 24.97
-4.5 m -15.0 ft	kg lb			*12 100 *26,000	*12 100 *26,000	*8450 *18,050	6300 13,550	*5800	4050			*4000 *9,300	*4000 *9,300	6.02 19.59

* Limited by hydraulic capacity rather than tipping load. The above loads are in compliance with SAE hydraulic excavator lift capacity rating standard J1097. They do not exceed 87% of hydraulic lifting capacity or 75% of tipping capacity. Weight of all lifting accessories must be deducted from the above lifting capacities.

Heavy Lift – On

Always refer to the appropriate Operation and Maintenance Manual for specific product information.

320D L Hydraulic Excavator

Reach Boom Lift Capacities



Load Point Height



Load Radius Over Front



Load Radius Over Side



Load at Maximum Reach

R2.5B1 STICK – 2.5 m (8'3")
BUCKET – 0.8 m³ (1.07 yd³)

UNDERCARRIAGE – LC
SHOES – 800 mm (32") triple grouser

BOOM – 5.7 m (18'9")
COUNTERWEIGHT – 3.87 ton (8,532 lb)

Diagram	1.5 m (5.0 ft)		3.0 m (10.0 ft)		4.5 m (15.0 ft)		6.0 m (20.0 ft)		7.5 m (25.0 ft)		Diagram		m ft		
	Over Front	Over Side	Over Front	Over Side	Over Front	Over Side	Over Front	Over Side	Over Front	Over Side	Over Front	Over Side			
7.5 m 25.0 ft	kg lb											*2400 *5,300	*2400 *5,300	7.32 23.67	
6.0 m 20.0 ft	kg lb						*4550 *9,950	*4550 *9,950				*2250 *5,000	*2250 *5,000	8.37 27.29	
4.5 m 15.0 ft	kg lb						*5050 *11,000	4650 9,900	*4700 *10,250	3050 6,550		*2250 *4,950	2200 4,900	8.98 29.38	
3.0 m 10.0 ft	kg lb					*7700 *16,550	7000 15,050	*5900 *12,750	4400 9,450	5000 10,700	3000 6,400	*2350 *5,150	2050 4,450	9.25 30.32	
1.5 m 5.0 ft	kg lb					*9400 *20,250	6450 13,850	*6750 *14,650	4150 8,900	4850 10,450	2900 6,150	*2550 *5,550	2000 4,400	9.22 30.25	
Ground Line	kg lb					*5700 *13,100	*5700 *13,100	*10 300 *22,250	6150 13,200	6850 14,650	4000 8,550	2800 10,250	*2850 *6,200	2100 4,600	8.89 29.18
-1.5 m -5.0 ft	kg lb	*6400 *14,350	*6400 *14,350	*10 500 *23,850	*10 500 *23,850	*10 400 *22,450	6050 13,050	6750 14,500	3900 8,400	4750 10,200	2800 5,950	*3350 *7,400	2400 5,300	8.23 26.97	
-3.0 m -10.0 ft	kg lb	*11 350 *25,450	*11 350 *25,450	*13 850 *29,950	12 300 26,350	*9650 *20,850	6150 13,200	6800 14,600	3950 8,500			*4350 *9,600	3100 6,950	7.13 23.25	
-4.5 m -15.0 ft	kg lb			*10 900 *23,300	*10 900 *23,300	*7700 *16,350	6400 13,800					*5800 *12,800	4750 10,700	5.50 17.76	

* Limited by hydraulic capacity rather than tipping load. The above loads are in compliance with SAE hydraulic excavator lift capacity rating standard J1097. They do not exceed 87% of hydraulic lifting capacity or 75% of tipping capacity. Weight of all lifting accessories must be deducted from the above lifting capacities.

Heavy Lift – On



Load Point Height



Load Radius Over Front



Load Radius Over Side



Load at Maximum Reach – Coupler Curled

R2.9B1 – QUICK COUPLER STICK – 2.9 m (9'7")
BUCKET – Equipped with Coupler – No Bucket

UNDERCARRIAGE – Long
SHOES – 800 mm (32") triple grouser

BOOM – 5.7 m (18'9")
COUNTERWEIGHT – 3.87 ton (8,532 lb)

Diagram	1.5 m (5.0 ft)		3.0 m (10.0 ft)		4.5 m (15.0 ft)		6.0 m (20.0 ft)		7.5 m (25.0 ft)		Diagram		m ft	
	Over Front	Over Side	Over Front	Over Side	Over Front	Over Side	Over Front	Over Side	Over Front	Over Side	Over Front	Over Side		
7.5 m 25.0 ft	kg lb											*3200 *7,150	*3200 *7,150	6.60 21.29
6.0 m 20.0 ft	kg lb									*3700 3500		*3000 *6,600	*3000 *6,600	7.67 24.97
4.5 m 15.0 ft	kg lb							*5100 *11,050	5000 10,750	*4800 *10,500	3450 7,450	*2950 *6,500	2900 6,350	8.33 27.26
3.0 m 10.0 ft	kg lb			*11 650 *24,750	*11 650 *24,750	*7500 *16,150	7400 15,950	*5950 *12,900	4750 10,250	*5200 *11,350	3350 7,200	*3050 *6,650	2650 5,750	8.69 28.48
1.5 m 5.0 ft	kg lb					*9350 *20,200	6900 14,800	*6900 *14,950	4500 9,700	5200 11,200	3250 6,950	*3200 *7,050	2550 5,550	8.77 28.79
Ground Line	kg lb			*6850 *15,650	*6850 *15,650	*10 550 *22,800	6550 14,100	7150 15,400	4350 9,300	5100 11,000	3150 6,750	*3600 *7,850	2550 5,650	8.60 28.20
-1.5 m -5.0 ft	kg lb	*6250 *14,000	*6250 *14,000	*10 400 *23,600	*10 400 *23,600	*10 850 *23,500	6450 13,800	7050 15,150	4250 9,100	5050 10,850	3100 6,650	*4200 *9,250	2750 6,050	8.14 26.67
-3.0 m -10.0 ft	kg lb	*10 350 *23,250	*10 350 *23,250	*15 100 *32,750	12 600 27,000	*10 400 *22,450	6450 13,850	7050 15,200	4250 9,100			5250 11,650	3200 7,100	7.35 23.99
-4.5 m -15.0 ft	kg lb			*12 550 *26,900	*12 550 *26,900	*8850 *18,900	6600 14,250	*6200 14,250	4400			*6000 *13,250	4300 9,650	6.09 19.72

* Limited by hydraulic capacity rather than tipping load. The above loads are in compliance with SAE hydraulic excavator lift capacity rating standard J1097. They do not exceed 87% of hydraulic lifting capacity or 75% of tipping capacity. Weight of all lifting accessories must be deducted from the above lifting capacities.

Heavy Lift – On














Always refer to the appropriate Operation and Maintenance Manual for specific product information.

320D L Hydraulic Excavator

Reach Boom Lift Capacities



R2.5B1 – QUICK COUPLER STICK – 2.5 m (8'3") **UNDERCARRIAGE – LC** **BOOM – 5.7 m (18'9")**
BUCKET – Equipped with Coupler – No Bucket **SHOES – 800 mm (32") triple grouser** **COUNTERWEIGHT – 3.87 ton (8,532 lb)**

		1.5 m (5.0 ft)		3.0 m (10.0 ft)		4.5 m (15.0 ft)		6.0 m (20.0 ft)		7.5 m (25.0 ft)				
														m ft
7.5 m 25.0 ft	kg lb							*4150	*4150			*3850	*3850	6.06
												*8,600	*8,600	19.49
6.0 m 20.0 ft	kg lb							*4950	*4950			*3550	*3550	7.21
								*10,850	*10,850			*7,850	*7,850	23.47
4.5 m 15.0 ft	kg lb							*5450	4950	*5100	3450	*3500	3100	7.92
								*11,850	10,600	*10,950	7,300	*7,700	6,850	25.89
3.0 m 10.0 ft	kg lb					*8100	7300	*6300	4700	5300	3350	*3600	2800	8.29
						*17,400	15,650	*13,650	10,150	11,400	7,150	*7,900	6,200	27.18
1.5 m 5.0 ft	kg lb					*9800	6800	*7150	4500	5200	3200	*3850	2700	8.38
						*21,150	14,600	*15,500	9,650	11,150	6,900	*8,450	5,950	27.49
Ground Line	kg lb			*6100	*6100	*10 750	6500	7150	4300	5100	3150	*4300	2750	8.19
				*14,000	*14,000	*23,250	14,000	15,350	9,250	11,000	6,750	*9,500	6,050	26.88
-1.5 m -5.0 ft	kg lb	*6750	*6750	*10 950	*10 950	*10 800	6450	7050	4250	5100	3100	4900	3000	7.71
		*15,050	*15,050	*24,850	*24,850	*23,450	13,800	15,200	9,100	10,950	6,700	10,800	6,600	25.26
-3.0 m -10.0 ft	kg lb	*11 750	*11 750	*14 350	12 700	*10 100	6500	7100	4300			5850	3550	6.87
		*26,350	*26,350	*31,050	27,250	*21,800	13,950	15,300	9,200			12,950	7,900	22.42
-4.5 m -15.0 ft	kg lb			*11 350	*11 350	*8100	6700					*6200	5050	5.50
				*24,250	*24,250	*17,200	14,450					*13,650	11,350	17.77

* Limited by hydraulic capacity rather than tipping load. The above loads are in compliance with SAE hydraulic excavator lift capacity rating standard J1097. They do not exceed 87% of hydraulic lifting capacity or 75% of tipping capacity. Weight of all lifting accessories must be deducted from the above lifting capacities.

Heavy Lift – On

Always refer to the appropriate Operation and Maintenance Manual for specific product information.

320D L Hydraulic Excavator

Mass Boom Lift Capacities



Load Point Height



Load Radius Over Front



Load Radius Over Side

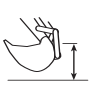















Load at Maximum Reach

M2.4CB2 STICK – 2.4 m (7'11")
BUCKET – 1.35 m³ (1.77 yd³)

UNDERCARRIAGE – LC
SHOES – 800 mm (32") triple grouser

BOOM – 5.2 m (17'1")
COUNTERWEIGHT – 3.87 ton (8,532 lb)

		1.5 m (5.0 ft)		3.0 m (10.0 ft)		4.5 m (15.0 ft)		6.0 m (20.0 ft)		7.5 m (25.0 ft)				m ft
														
7.5 m 25.0 ft	kg lb											*3250	*3250	6.49
6.0 m 20.0 ft	kg lb							*4700 *10,350	4400 9,400			*3000 *6,650	2800 6,250	7.68 25.00
4.5 m 15.0 ft	kg lb							*5050 *10,950	4350 9,300			*3000 *6,600	2250 5,000	8.34 27.28
3.0 m 10.0 ft	kg lb			*24,700	*24,700	*7400 15,850	6850 14,700	*5750 *12,500	4150 8,900	4700 10,000	2700 5,700	*3150 *6,900	2000 4,450	8.62 28.28
1.5 m 5.0 ft	kg lb					*9050 19,450	6300 13,500	*6600 *14,200	3900 8,400	4600 9,800	2600 5,500	*3450 *7,500	2000 4,350	8.59 28.19
Ground Line	kg lb			*8650 *19,900	*8650 *19,900	*10 000 *21,550	5950 12,700	6600 14,150	3750 8,000	4500	2550	3850 8,450	2100 4,650	8.23 26.99
-1.5 m -5.0 ft	kg lb	*7900 *17,700	*7900 *17,700	*14 300 *32,600	11 750 25,100	*10 050 *21,700	5850 12,500	6550 14,000	3650 7,850			4550 10,000	2550 5,600	7.49 24.53
-3.0 m -10.0 ft	kg lb	*14 150 *31,800	*14 150 *31,800	*13 200 *28,500	12 100 25,850	*9050 *19,450	5950 12,750	*6200	3750			*4650 *10,200	3600 8,100	6.23 20.27
-4.5 m -15.0 ft	kg lb											*6000	*6000	4.47

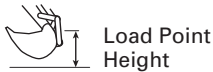
* Limited by hydraulic capacity rather than tipping load. The above loads are in compliance with SAE hydraulic excavator lift capacity rating standard J1097. They do not exceed 87% of hydraulic lifting capacity or 75% of tipping capacity. Weight of all lifting accessories must be deducted from the above lifting capacities.

Heavy Lift – On

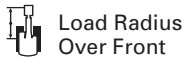
Always refer to the appropriate Operation and Maintenance Manual for specific product information.

320D L Hydraulic Excavator

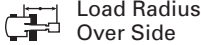
Super Long Reach Boom Lift Capacities



Load Point Height



Load Radius Over Front



Load Radius Over Side



Load at Maximum Reach

SUPER LONG REACH STICK – 6.28 m (20'7")

UNDERCARRIAGE – Long

BOOM – 8.85 m (29'0")

BUCKET – 1142 mm (45") Ditch Cleaning Bucket

SHOES – 800 mm (32") triple grouser

COUNTERWEIGHT – 4.82 ton (10,624 lb)

		4.5 m (15.0 ft)		6.0 m (20.0 ft)		7.5 m (25.0 ft)		9.0 m (30.0 ft)		10.5 m (35.0 ft)		12.0 m (40.0 ft)		13.5 m (45.0 ft)				m ft	
12.0 m 40.0 ft	kg lb																*800 *1,800	*800 *1,800	11.54 37.25
10.5 m 35.0 ft	kg lb																*750 *1,650	*750 *1,650	12.78 41.52
9.0 m 30.0 ft	kg lb											*1850 *3,550	1800 *3,550				*700 *1,550	*700 *1,550	13.72 44.74
7.5 m 25.0 ft	kg lb									*4,050 *4,050		*1850 *4,050	1800 3,750	*1000 *1000			*700 *1,550	*700 *1,550	14.42 47.15
6.0 m 20.0 ft	kg lb									*2000 *4,350	*2000 *4,350	*1950 *4,250	1750 3,650	*1750 *3,200	1300 2,700		*700 *1,550	*700 *1,550	14.92 48.87
4.5 m 15.0 ft	kg lb							*2400 *5,150	*2400 *5,150	*2200 *4,800	2150 4,600	*2050 *4,500	1650 3,500	*2000 *4,350	1250 2,650		*750 *1,550	*750 *1,550	15.24 49.98
3.0 m 10.0 ft	kg lb			*3950 *8,450	*3950 *8,450	*3200 *6,850	*3200 *6,850	*2750 *5,900	2650 5,700	*2450 *5,250	2000 4,300	*2250 *4,850	1550 3,300	*2100 *4,550	1200 2,550		*750 *1,650	*750 *1,650	15.40 50.52
1.5 m 5.0 ft	kg lb	*6950 *14,850	6550 14,100	*4800 *10,300	4450 9,550	*3700 *8,000	3200 6,900	*3100 *6,650	2450 5,200	*2650 *5,800	1850 4,000	*2400 *5,200	1450 3,100	2050 4,400	1150 2,400		*800 *1,750	*800 *1,750	15.40 50.53
Ground Line	kg lb	*4650 *10,650	*4650 *10,650	*5500 *11,900	3950 8,500	*4200 *9,050	2900 6,250	*3400 *7,350	2250 4,750	*2900 *6,250	1750 3,700	2450 5,250	1350 2,900	2000 4,300	1100 2,300		*850 *1,900	850 1,850	15.24 49.99
-1.5 m -5.0 ft	kg lb	*4450 *10,050	*4450 *10,050	*6000 *12,950	3650 7,850	*4550 *9,850	2700 5,800	3650 7,850	2100 4,450	*2900 *6,250	1650 3,450	2350 5,050	1300 2,750	1950 4,200	1050 2,200		*950 *2,100	850 1,900	14.91 48.89
-3.0 m -10.0 ft	kg lb	*4900 *11,050	*4900 *11,050	*6250 *13,500	3500 7,550	4600 9,900	2550 5,500	3550 7,600	1950 4,200	2850 6,050	1550 3,300	2300 4,950	1250 2,650	1950 4,150	1000 2,150		*1100 *2,350	900 2,000	14.40 47.19
-4.5 m -15.0 ft	kg lb	*5700 *12,850	5350 11,450	*6300 *13,600	3450 7,450	4550 9,750	2500 5,350	3500 7,500	1900 4,100	2800 6,000	1500 3,250	2300 4,900	1250 2,600				*1250 *2,750	1000 2,250	13.70 44.81
-6.0 m -20.0 ft	kg lb	*6750 *15,300	5450 11,700	*6150 *13,250	3500 7,500	4550 9,750	2500 5,400	3500 7,500	1900 4,100	2800 6,000	1500 3,250	2300 5,000	1250 2,650				*1500 *3,400	1200 2,600	12.76 41.64
-7.5 m -25.0 ft	kg lb	*7600 *16,300	5600 12,100	*5750 *12,400	3600 7,700	*4550 *9,800	2550 5,500	3550 7,600	1950 4,200	2850 6,150	1600 3,400						*1950 *4,400	1450 3,200	11.53 37.46
-9.0 m -30.0 ft	kg lb	*6600 *14,100	5900 12,700	*5100 *10,850	3750 8,100	*4050 *8,600	2700 5,850	*3200 *6,750	2100 4,500								*2400 *5,300	1950 4,400	9.89 31.84
-10.5 m -35.0 ft	kg lb	*5100 *11,200	*5100 *11,200	*3950 *8,200	*3950 *8,200	*3050 *6,150	2950 *6,150										*2650 *5,750	2600 *5,750	8.18 25.98

* Limited by hydraulic capacity rather than tipping load. The above loads are in compliance with SAE hydraulic excavator lift capacity rating standard J1097. They do not exceed 87% of hydraulic lifting capacity or 75% of tipping capacity. Weight of all lifting accessories must be deducted from the above lifting capacities.

Always refer to the appropriate Operation and Maintenance Manual for specific product information.