

Image shown may not reflect actual engine

CATERPILLAR ENGINE SPECIFICATIONS

I-6, 4-Stroke-Cycle Diesel

Bore.....	145.0 mm (5.71 in)
Stroke.....	183.0 mm (7.2 in)
Displacement.....	18.1 L (1,104.53 in ³)
Aspiration.....	Turbocharged Aftercooled
Compression Ratio.....	16.3:1
Rotation (from flywheel end).....	Counterclockwise
Weight, Net Dry (approximate).....	1769 kg (3900 lb)

FEATURES

Emissions & Regulations

Meets U.S. EPA Tier 3 and CARB emissions requirements. FM approved. UL listed - US and Canada. Meets NFPA 20 requirements.

Worldwide Supplier Capability

Caterpillar
- Casts engine blocks, heads, cylinder liners, and flywheel housings
- Machines critical components
- Assembles complete engine
- Factory-designed systems built at Caterpillar ISO 9001:2000 certified facilities
Ownership of these manufacturing processes enables Caterpillar to produce high quality, dependable product.

Testing

Prototype testing on every model:
- proves computer design
- verifies system torsional stability
- functionality tests every model

Every Caterpillar engine is dynamometer tested under full load to ensure proper engine performance.

Full Range of Attachments

Wide range of bolt-on system expansion attachments, factory designed and tested.

Unmatched Product Support Offered Through Worldwide Caterpillar Dealer Network

More than 1,800 dealer outlets
Caterpillar factory-trained dealer technicians service every aspect of your industrial engine
99.7% of parts orders filled within 24 hours worldwide
Caterpillar parts and labor warranty
Preventive maintenance agreements available for repair before failure options

Scheduled Oil Sampling program matches your oil sample against Caterpillar set standards to determine:

- internal engine component condition
- presence of unwanted fluids
- presence of combustion by-products

Web Site

For all your industrial power requirements, visit www.cat-industrial.com.

STANDARD ENGINE EQUIPMENT**522 bkW/700 bhp @ 2100 rpm****Air Inlet System**

Dual turbocharger: front and rear inlet,
127.0 mm (5.0 in)
Separate Circuit Aftercooled (SCAC)

Charging System

Charging alternator 24 volt, 50 amp

Control System

Dual Electronic Control Modules (ECMs) - primary
and secondary
Electronic governing, PTO speed control
Programmable ratings
Cold mode start strategy
Automatic altitude compensation
Power compensation for fuel temperature
Programmable low and high idle and total engine
limit (TEL)
Electronic diagnostics and fault logging
Engine monitoring and protection system (speeds,
temperature, pressure)
J1939 Broadcast (diagnostic, engine status and
control)

Cooling System

Thermostats and housing, vertical outlet
Jacket water pump, gear driven, centrifugal
Heat exchanger (installed)
Expansion tank

Exhaust System

Exhaust manifold, dry
Dual turbo: exhaust elbow, dry 203 mm (8 in)

Flywheels and Flywheel Housing

Flywheel, SAE #1
Flywheel housing, SAE #1
SAE standard rotation

Fuel System

Electronic unit injector
Fuel filter, secondary, mid-mount (LH 2 micron high
performance)
Fuel transfer pump, LH front
Fuel priming pump, LH mid-mount
Fuel sample valve, mounted on fuel filter base
Primary filter / water separator

Instrumentation

Instrument panel, LH
Engine oil pressure gauge
Voltmeter gauge
Water temperature gauge
Tachometer / engine hour meter

Lube System

Crankcase breather, front valve cover
Oil cooler, RH (dual)
Oil filter, RH
Oil pan, front sump
Oil filler, LH front
Oil dipstick, LH front
Oil pump

Mounting System

Front and rear support

Power Take-Offs

Flywheel stub shaft

Protection System

Stop-Start System, automatic (compatible with
NFPA 20 requirements, able to be energized from
either of two battery sources and capable of manual
starter actuation)

Starting System

24 volt, LH electric starting motor
Jacket water heater (3 kW, 120-240 volt)

General

Vibration damper and guard
Paint, Caterpillar fire pump red
Lifting eyes
Automatic variable timing, electronic
Electronic installation kit, 70 pin connector
(connectors, pins, sockets)
Literature, Owner and Operator's Manual

PERFORMANCE CURVES**522 bkW/700 bhp @ 2100 rpm****EM0024-01**

Performance curve is not shown since fire pump technical data is published at constant speed (rpm).

Below data is shown from 100% load to 10% load.

Engine Speed rpm	Engine Power kW	Torque N·m	BSFC g/kW-hr	Fuel Rate L/hr
2100	522	2374	224.2	139.5
2100	470	2136	228.2	127.8
2100	418	1899	237.2	118.1
2100	392	1780	242.7	113.2
2100	365	1662	247.3	107.7
2100	313	1424	255.8	95.5
2100	261	1187	262.5	81.7
2100	209	949	259.3	64.5
2100	157	712	254.1	47.4
2100	131	593	249.9	38.9
2100	104	475	262.3	32.6
2100	52	237	361.7	22.5

PERFORMANCE CURVES

EM0024-01

Performance curve is not shown since fire pump technical data is published at constant speed (rpm).

Below data is shown from 100% load to 10% load.

Engine Speed rpm	Engine Power bhp	Engine Torque lb·ft	BSFC lb/bhp-hr	Fuel Rate gal/hr
2100	700	1751	.369	36.9
2100	630	1575	.375	33.8
2100	560	1401	.390	31.2
2100	525	1313	.399	29.9
2100	490	1226	.407	28.5
2100	420	1050	.421	25.2
2100	350	875	.432	21.6
2100	280	700	.426	17.0
2100	210	525	.418	12.5
2100	175	437	.411	10.3
2100	140	350	.431	8.6
2100	70	175	.595	5.9

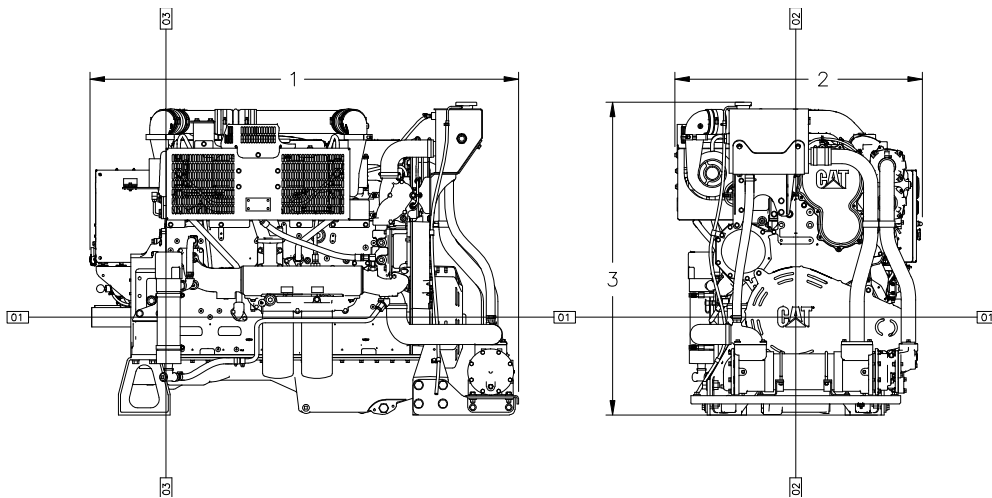
RATINGS AND CONDITIONS

522 bkW/700 bhp @ 2100 rpm

Standby Fire Pump Ratings represent the output which may be utilized to drive stationary fire pumps where the pumping equipment has been sized according to NFPA 20 standards. Engine rating is FM approved and UL listed (US and Canada).

Engine Performance Diesel Engines — 7 liter and higher

All rating conditions are based on SAE J1995, inlet air standard conditions of 99 kPa (29.31 in. Hg) dry barometer and 25°C (77°F) temperature. Performance measured using a standard fuel with fuel gravity of 35° API having a lower heating value of 42,780 kJ/kg (18,390 btu/lb) when used at 29° C (84.2° F) with a density of 838.9 g/L.



Engine Dimensions

(1) Length	1889.0 mm (74.37 in)
(2) Width	1091.0 mm (42.95 in)
(3) Height	1379.7 mm (54.32 in)

Note: Do not use for installation design. See general dimension drawings for detail (Drawing # 3222516).

Performance Number: EM0024-01

Feature Code: C18DF02 Arr. Number: 3149713

Materials and specifications are subject to change without notice.

15476015

© 2009 Caterpillar

All rights reserved.

The International System of Units (SI) is used in this publication.

CAT, CATERPILLAR, SAFETY.CAT.COM their respective logos, "Caterpillar Yellow," and the POWER EDGE trade dress, as well as corporate and product identity used herein, are trademarks of Caterpillar and may not be used without permission.