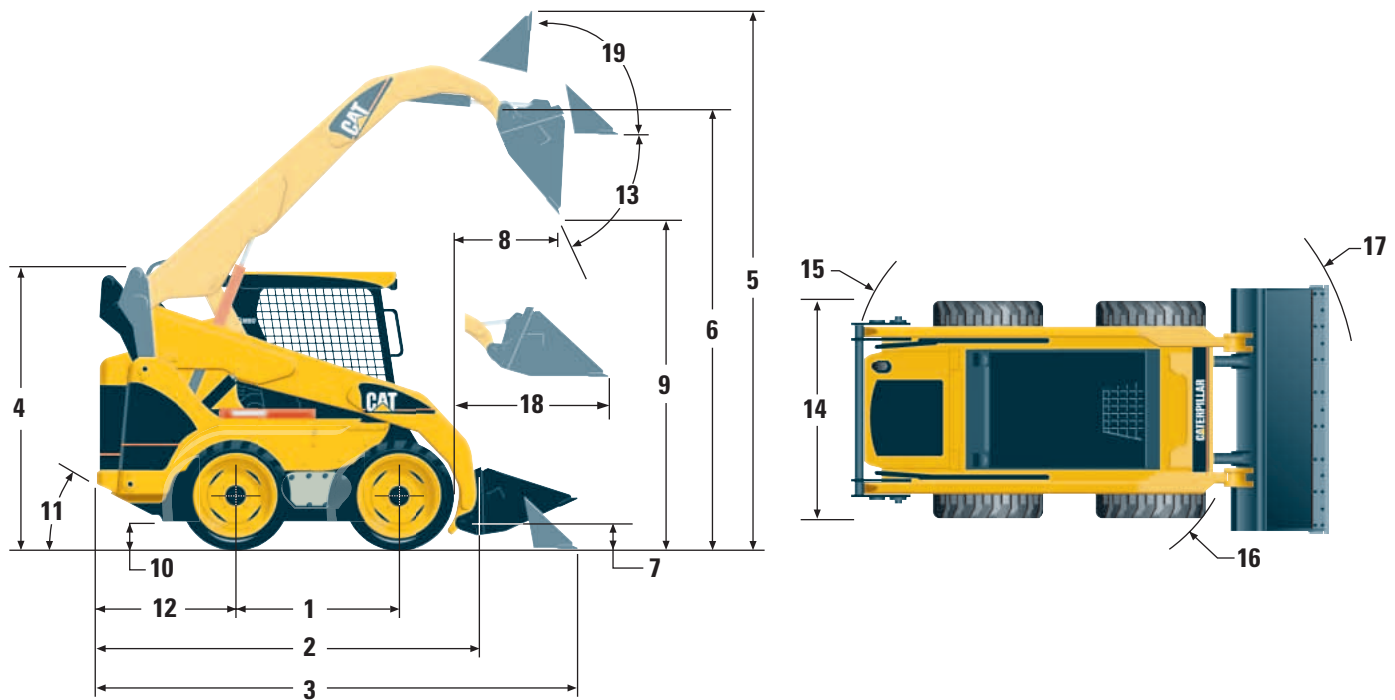


252B/262B/268B Skid Steer Loaders

Dimensions

All dimensions are approximate.



1	Wheelbase	1228 mm	48 in
2	Length w/o Bucket	2902 mm	114 in
3	Length w/Bucket on ground	3616 mm	142 in
4	Height to top of Cab	2063 mm	83 in
5	Max Overall Height	4062 mm	160 in
6	Hinge Pin Height at max lift	3210 mm	127 in
7	Hinge Pin Height at carry position	213 mm	8.4 in
8	Reach at max lift and dump	829 mm	33 in
9	Clearance at max lift and dump	2421 mm	95 in
10	Ground Clearance	196 mm	8 in
11	Departure Angle	26.4°	

12	Bumper Overhang behind rear axle	1043 mm	41 in
13	Maximum Dump Angle	51°	
14	Vehicle Width over tires	1829 mm	72 in
15	Turning Radius from center — left	1696 mm	67 in
16	Turning Radius from center — right	1325 mm	52 in
17	Turning Radius from center — full	2180 mm	86 in
18	Max Reach w/Arms Parallel to ground	1331 mm	52 in
19	Rack Back Angle at max height	87°	