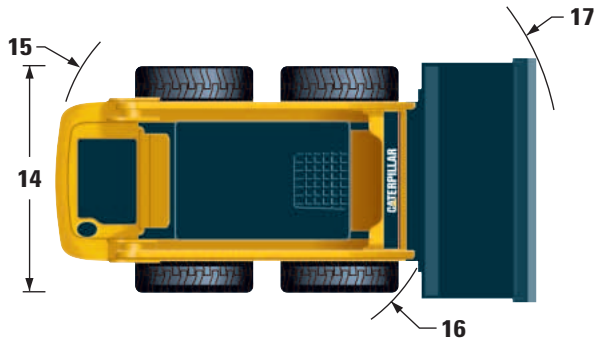
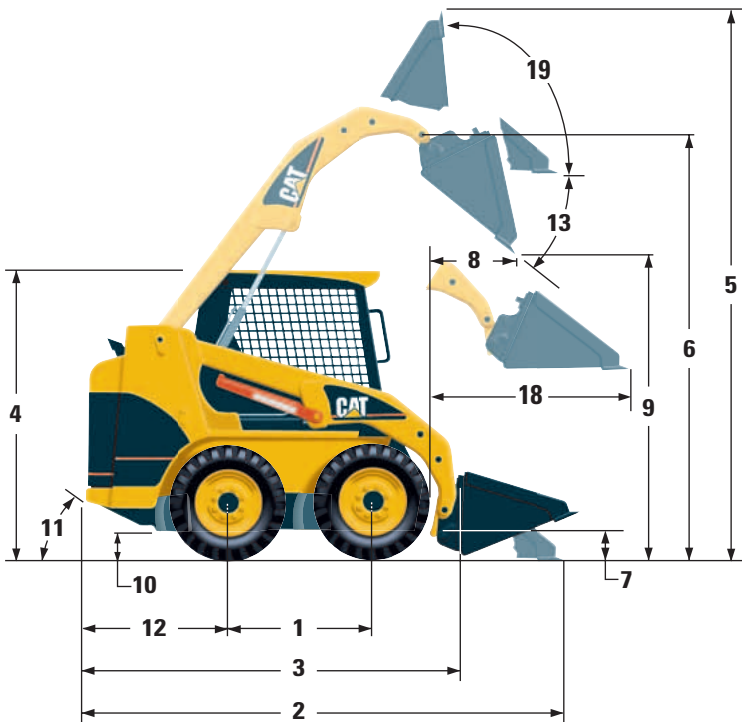


216B/226B Skid Steer Loaders

Dimensions

All dimensions are approximate.



1	Wheelbase	986 mm	39 in
2	Length w/Bucket on ground	3233 mm	127 in
3	Length w/o Bucket	2519 mm	99 in
4	Height to top of Cab	1950 mm	77 in
5	Max Overall Height	3709 mm	146 in
6	Hinge Pin Height at max lift	2854 mm	112 in
7	Hinge Pin Height at carry position	239 mm	9.3 in
8	Reach at max lift and dump	505 mm	20 in
9	Clearance at max lift and dump	2169 mm	85 in
10	Ground Clearance	195 mm	8 in
11	Departure Angle	26°	

12	Bumper Overhang behind rear axle	967 mm	38 in
13	Maximum Dump Angle	40°	
14	Vehicle Width over tires	1525 mm	60 in
15	Turning Radius from center — left	1485 mm	58.5 in
16	Turning Radius from center — right	1199 mm	47.2 in
17	Turning Radius from center — full	1940 mm	76.4 in
18	Max Reach w/Arms Parallel to ground	1280 mm	50.4 in
19	Rack Back Angle at max height	96.7°	