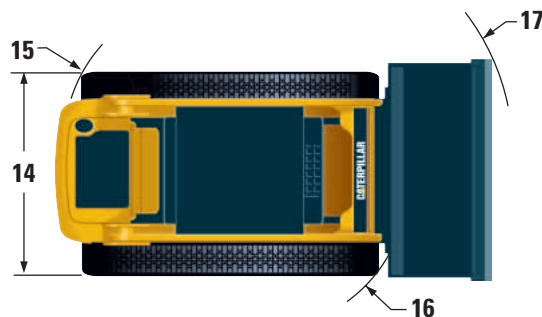
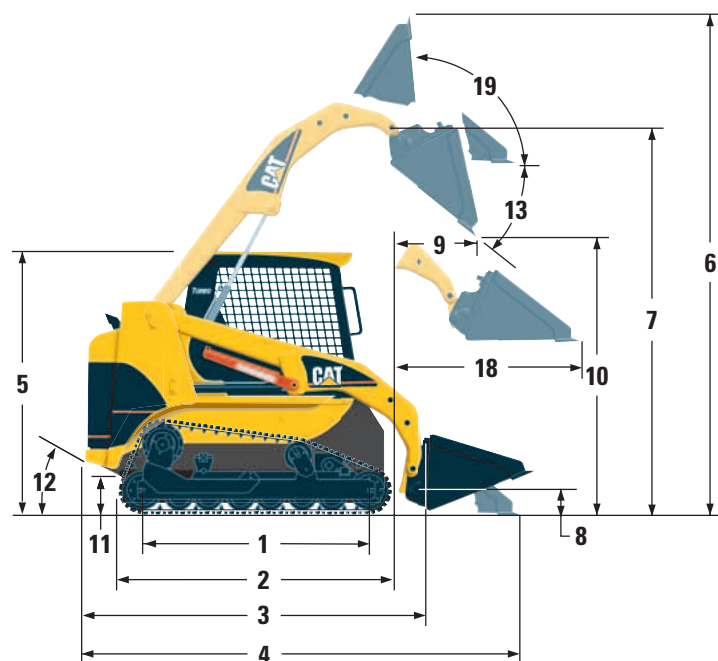


267B/277B/287B Multi Terrain Loaders

Dimensions

All dimensions are approximate.



1	Length of Track on ground	
	- 267B/277B	2045 mm 81 in
	- 287B	1842 mm 73 in
2	Overall Length of track	
	- 267B/277B	2494 mm 98 in
	- 287B	2293 mm 90.3 in
3	Length w/o Bucket	
	- 267B/277B	2923 mm 115 in
	- 287B	2901 mm 114 in
4	Length w/Bucket on ground	
	- 267B/277B	3684 mm 145 in
	- 287B	3697 mm 145 in
5	Height to Top of Cab	
	- 267B/277B	2074 mm 82 in
	- 287B	2123 mm 84 in
6	Max Overall Height	
	- 267B/277B	4025 mm 158 in
	- 287B	4182 mm 165 in
7	Hinge Pin Height at max lift	
	- 267B/277B	3091 mm 121 in
	- 287B	3250 mm 128 in
8	Hinge Pin Height at carry position	
	- 267B/277B	251 mm 10 in
	- 287B	218 mm 8.6 in
9	Reach at max lift and dump	
	- 267B/277B	676 mm 27 in
	- 287B	837 mm 33 in
10	Clearance at max lift and dump	
	- 267B/277B	2349 mm 93 in
	- 287B	2386 mm 94 in

11	Ground Clearance	
	- 267B/277B	353 mm 14 in
	- 287B	283 mm 11 in
12	Departure Angle	
	- 267B/277B	62°
	- 287B	47°
13	Maximum Dump Angle	
	- 267B/277B	40°
	- 287B	51°
14	Vehicle Width	
	- 267B/277B	1898 mm 75 in
	- 287B	1962 mm 77 in
15	Turning Radius from center — left	
	- 267B/277B	1545 mm 60.8 in
	- 287B	1615 mm 63.6 in
16	Turning Radius from center — right	
	- 267B/277B	1603 mm 63.1 in
	- 287B	1514 mm 59.6 in
17	Turning Radius from center — full	
	- 267B/277B	2512 mm 98.9 in
	- 287B	2433 mm 95.8 in
18	Max Reach w/Arms Parallel to ground	
	- 267B/277B	1455 mm 57.3 in
	- 287B	1378 mm 54.3 in
19	Rack Back Angle at max height	
	- 267B/277B	97.4°
	- 287B	87°