



# 卡特彼勒在华企业

90年来，卡特彼勒不懈努力，促使可持续进步成为可能，并在全球各大洲积极推动变革。

卡特彼勒协助客户进行基础设施建设、能源和自然资源的开发。2015年，卡特彼勒全球销售及收入总额为470.11亿美元，是建筑工程机械、矿用设备、柴油和天然气发动机、工业用燃气轮机以及电传动内燃机车领域的全球领先企业。公司主要运营三大业务板块：资源行业、工程机械、能源和交通行业，并通过金融产品部门提供融资及相关服务。卡特彼勒已16次被列入道琼斯可持续发展指数。2015年末，卡特彼勒在全球拥有105700名员工。

目前，卡特彼勒在中国拥有28家工厂，4个研发中心，3个物流和零部件中心，约11000名员工。

# 目录

## 北京

卡特彼勒（中国）融资租赁有限公司	2
卡特彼勒能源系统技术(北京)有限公司	6
索拉透平（北京）贸易服务有限公司	10

## 天津

亚实履带（天津）有限公司	15
亚实动力系统(天津)有限公司	19
卡特彼勒(天津)有限公司	23
卡特彼勒共享服务中心	27

## 河南

卡特彼勒（郑州）有限公司	32
--------------	----

## 河北

卡特彼勒(廊坊)采矿设备有限公司	37
------------------	----

## 山东

卡特彼勒（青州）有限公司	42
--------------	----

## 上海

卡特彼勒再制造工业(上海)有限公司	47
卡特彼勒船用柴油机贸易（上海）有限公司	51
卡特彼勒物流（上海）有限公司	55

## 江苏

卡特彼勒(徐州)有限公司	58
卡特彼勒路面机械(徐州)有限公司	62
卡特彼勒底盘(徐州)有限公司	66
卡特彼勒(中国)机械部件有限公司	70
卡特彼勒无锡发动机工业园	74
卡特彼勒技术研发（中国）有限公司	88
卡特彼勒(通州)有限公司	92
卡特彼勒(吴江)有限公司	96
卡特彼勒(苏州)有限公司	100
派若搬（苏州）安全系统有限公司	104
卡特彼勒（苏州）物流有限公司	108

## 广东

卡特彼勒发动机(广东)有限公司	113
-----------------	-----

# 北京 BEIJING

# 卡特彼勒（中国） 融资租赁有限公司

卡特彼勒是全球最大的建筑机械、矿用设备、柴油和天然气发动机、工业用燃气轮机以及柴电机车的制造商。作为该财富 50 强企业的金融业务部门，以及中国工程机械行业内的第一家融资租赁公司，卡特彼勒（中国）融资租赁有限公司于 2004 年在北京成立，为中国客户提供融资租赁服务。

Cat（卡特）融资的使命是通过卓越的金融服务，帮助卡特彼勒以及其客户获得成功。30 余年服务全球客户的经验，使 Cat 融资了解如何协同客户，帮助他们获得成功。在中国，卡特彼勒（中国）融资租赁有限公司的客户主要为个体户及中小企业，致力于让客户更为轻松的获得 Cat 设备。



卡特彼勒（中国）融资租赁有限公司  
地 址：北京市朝阳区望京街 8 号卡特  
彼勒大厦 1701 室  
邮 编：100102

**CATERPILLAR®**  
卡特彼勒



优势在于



| 了解 Cat 产品，并了解客户的业务需求；

| 提供一站式的便捷购物；

| 提供多样化的融资方案，具有竞争性的利率及灵活可变的还款计划；

| 提供快速的信贷审批及易于客户使用的文件；

| 为采矿业设备提供专业的融资解决方案；

| 减轻客户现有银行信贷额度压力。

# 卡特彼勒能源系统技术 (北京) 有限公司

[www.mwm.net](http://www.mwm.net)







地址：北京市建国门外大街 19 号国际大厦 A  
座 2703 室  
邮编：100004  
传真：(8610) 65289316

## 卡特彼勒能源系统技术（北京）有限公司

MWM 是卡特彼勒公司旗下专注于燃气发电机组的全球领先品牌，是 1871 年由卡尔奔驰先生在德国曼海姆市创立。140 多年以来，公司一直致力于研发和建造能够高效提供电、热、冷的发动机和发电机组。MWM 燃气发电机组单机功率范围从 400KW 到 4300KW 不等，是国际领先的分布式供能源设备品牌之一。

1995 年，MWM 燃气发电机组开始进入中国市场。2007 年，曼海姆能源系统技术（北京）有限公司正式成立。MWM 先后为中国国内 50 多个大型项目提供了上百台燃气发电机组，装机容量超过 300MW。MWM 燃气发电机组广泛应用于天然气分布式能源、垃圾填埋气、煤矿瓦斯、污水沼气、生物沼气、和天然气发电等多个领域，参与的项目包括安装在北京、上海、昆山等地的天然气冷热电项目；在南京、西安、厦门等地的垃圾填埋气发电项目；海口、石家庄、乌鲁木齐等地的污水沼气发电项目；北京、内蒙古、青岛等地的生物沼气发电项目；太原、晋城、淮南等地的煤层气发电项目；以及格尔木和塔里木油田等地的天然气发电项目。2013 年，曼海姆能源系统技术（北京）有限公司德国总部 MWM GmbH 正式更名为 Caterpillar Energy Solutions GmbH。2015 年，曼海姆能源系统技术（北京）有限公司正式更名为卡特彼勒能源系统技术（北京）有限公司。

## 大事记

- 1995 年，第一台 MWM 燃气发电机组进入中国
- 2006 年，MWM 为中国乳业第一个大规模的沼气发电项目提供沼气发电机组
- 2007 年，曼海姆能源系统技术（北京）有限公司成立
- 2008 年，MWM 向中国提供第一台 4MW 级别的瓦斯内燃机发电机组
- 2011 年，MWM 燃气发电机组在中国装机超过 100 台
- 2011 年，MWM 成为卡特彼勒公司的全资子公司
- 2012 年，MWM 为中国首个工业园区用燃气内燃机分布式能源项目福伊特纸业提供天然气发电机组
- 2013 年，MWM 为全球运算速度最快的广州超级计算中心的分布式能源项目提供天然气发电机组
- 2013 年，曼海姆能源系统技术（北京）有限公司德国总部 MWM GmbH 正式更名为 Caterpillar Energy Solutions GmbH。
- 2015 年，曼海姆能源系统技术（北京）有限公司正式更名为卡特彼勒能源系统技术（北京）有限公司。

# Caterpillar Energy System Technology (Beijing) Co., Ltd.

[www.mwm.net](http://www.mwm.net)







Address: Room 2703, CITIC Building Tower  
A, No. 19 Jianguomenwai Street, Chaoyang  
District, Beijing, China  
Postcode: 100004  
Fax: [8610] 65289316

## Caterpillar Energy System Technology (Beijing) Co., Ltd.

Founded in Mannheim, Germany by Mr. Carl Benz in 1871, MWM is a Caterpillar-owned global leading brand focusing on gas gensets. MWM has been developing and building engines and gensets that can supply CCHP with high efficiency for more than 140 years. With the power outputs between 400 and 4,300 KW, MWM is one of the international leading brands for decentralized energy supply.

In 1995, MWM gas gensets entered the Chinese market. In 2007, MWM (Beijing) Co., Ltd. was established, which has provided hundreds of gas gensets for more than 50 projects in China, with an installed capacity of more than 300MW nationwide in a wide range of applications, including natural gas distributed energy, landfill gas, coal mine gas, sewage gas, biogas and natural gas power generation. Projects participated by MWM include natural gas CCHP projects in Beijing, Shanghai and Kunshan; landfill gas projects in Nanjing, Xi'an and Xiamen; sewage biogas projects in Haikou, Shijiazhuang and Urumqi; biogas projects in Beijing, Inner Mongolia and Qingdao; coalbed methane projects in Taiyuan, Jincheng and Huainan, as well as natural gas projects in Golmud and Tarim oilfields. In 2013, MWM GmbH, the headquarters of MWM (Beijing) Co., Ltd., changed name to Caterpillar Energy Solutions GmbH. In 2015, MWM (Beijing) Co., Ltd., changed name to Caterpillar Energy System Technology (Beijing) Co., Ltd.

## Milestone

- In 1995, the first gas genset of MWM entering China
- In 2006, providing biogas gensets for the first large-scale biogas generation project in the Chinese dairy industry
- In 2007, MWM (Beijing) Co., Ltd. being established
- In 2008, providing the first 4MW-level internal combustion coal mine gas genset in China
- In 2011, installing more than 100 units of gas gensets in China
- In 2011, becoming a wholly owned subsidiary of Caterpillar
- In 2012, providing natural gas gensets for the first gas engine distributed energy project Voith Paper in industrial zones in China
- In 2013, providing natural gas gensets for the distributed energy project of Guangzhou super computer center, the fastest computing center in the world
- In 2013, MWM GmbH, the headquarters of MWM (Beijing) Co., Ltd., changed name to Caterpillar Energy Solutions GmbH.
- In 2015, MWM (Beijing) Co., Ltd., changed name to Caterpillar Energy System Technology (Beijing) Co., Ltd.



# Caterpillar (China) Financial Leasing Co., Ltd.

Caterpillar (China) Financial Leasing Co., Ltd. is the financial arm of Caterpillar Inc., a Fortune 50 company and the world's largest manufacturer of construction and mining equipment, natural gas and diesel engines, industrial gas turbines and diesel-electric locomotives. We have been serving our customers in China since 2004 and are headquartered in Beijing. We are the first financial leasing company in China's construction equipment industry.

Cat Financial's mission is to help Caterpillar and its customers to succeed through financial service excellence. With over 30 years of serving our customers globally, we know how to work with customers to help them succeed. We make customers' acquisition of Cat equipment simple. Sole proprietors, small and medium enterprises are our key customers in China.



**BUILT FOR IT.**

Caterpillar (China) Financial Leasing Co., Ltd.

Address: Room 1701, Caterpillar Tower, No. 8 Wangjing  
Street, Chaoyang District, Beijing, China

Postcode: 100102

**CATERPILLAR®**  
**卡特彼勒**

We serve customers by



| Understanding Cat products and customers' business needs;

| Providing convenient one-stop shopping;

| Offering a variety of financial plans, competitive rates and flexible payment schedules;

| Providing fast credit turnaround and user-friendly documentation;

| Offer specialized equipment financing solutions for mining industries;

| Free up existing bank lines.





## 索拉透平（北京） 贸易服务有限公司

索拉透平（北京）贸易服务有限公司是卡特彼勒（中国）投资有限公司的全资子公司，负责在大中华区范围内（中国大陆、台湾和香港地区）对索拉透平公司（Solar Turbines Incorporated，索拉透平公司及其关联公司视情况分别或合称为“索拉”）机组及相关产品的贸易和售后服务。

索拉透平公司于1927年成立，总部设在美国加利福尼亚州圣迭哥市，1981年被卡特彼勒收购。

索拉的燃气轮机和压缩机产品从80年代开始进入中国大陆市场，随着机群的快速增长，为了更快地响应用户对服务的各种需求，索拉于1992年在北京设立了代表处，2007年成立了中国服务区，并于2011年注册成立索拉透平（北京）贸易服务有限公司。公司目前有51名员工，包括30多位分布在全国的现场服务工程师，业务涵盖燃气轮机、发动机、发电机组、压缩机、压缩机组和相关电站和增压站的配套设备及零部件、备件的批发、佣金代理及进出口；提供上述产品的安装、调试、售后服务；技术咨询、提供上述产品的技术培训；和工程咨询。索拉采用直销模式。在大中国区的客户主要分为三大类：分别为油气类客户，包括煤焦化厂、造纸厂在内的热电联合循环客户，以及其它客户，如海运、自备发电等。

经过 30 年的发展，索拉累计向大中华区销售了 300 多台（套）各类型设备，这些设备满足了客户的生产需求，也赢得了客户的高度认可。

索拉透平致力于把成熟的领先技术和丰富的经验带给客户，帮助他们取得显著的经济和环境效益。由于使用索拉设备，索拉中国客户河南诚宇焦化有限公司于 2014 年 3 月获得美国环保署温室气体减排认证，成为首家获得此认证的美国境外企业；索拉中国客户山西立恒钢铁股份有限公司于 2015 年 1 月成为全球第二家获得此认证的美国境外企业。



## 里程碑

**1963**

- | 索拉的两台土星 10 (Saturn® 10) 燃气轮机进入台湾地区

**1986**

- | 索拉的两台半人马座 40 (Centaur® 40) 压缩机组进入中国大陆

**1992**

- | 索拉透平国际公司在北京设立代表处

**2006**

- | 索拉透平公司和中国海洋石油总公司签署长期战略合作协议

**2007**

- | 索拉售后服务中国区成立，负责中国区内的相关服务业务

**2011**

- | 索拉透平（北京）贸易服务有限公司正式成立

**2014**

- | 索拉透平国际公司和中国石油天然气集团公司签署关于双方长期战略合作的协议



## Solar Turbines (Beijing) Trading & Services Co., Ltd.

Solar Turbines (Beijing) Trading & Services Co., Ltd. is a subsidiary of Caterpillar (China) Investment Co., Ltd. It covers Solar Turbines Incorporated (where applicable, Solar Turbines Incorporated and its affiliates, individually or collectively referred to as "Solar") products and aftermarket services business in Great China (Mainland China, Taiwan and Hong Kong).

Established in 1927, Solar Turbines Incorporated is headquartered in San Diego, California. It was acquired by Caterpillar in 1981.

Solar products, including gas turbine and gas compressor first entered into the Chinese mainland in the 1980s. As Solar's fleet grew, Solar established a representative office in Beijing in 1992, set up China service area in 2007, and then established Solar Turbines (Beijing) Trading & Services Co., Ltd in 2011. The company has 51 employees, including more than 30 home-based field service engineers throughout China. Its businesses include wholesale, commission agency services and import and export of turbines, engines, generator sets, compressors, compressor sets, power station equipment and compressor station equipment and their components, parts and spare parts; installation, commissioning and after sales services of abovementioned equipment; technical consulting and technical training for abovementioned products; and engineering consulting.



Carrying the “direct servicing customer” model, Solar serves customers from three categories: oil and gas customers, cogeneration customers including coal coking plants and paper mills, as well as marine customers and self-supply power plants.

For over 30 years, Solar has sold more than 300 equipment packages to the Great China, which has satisfied customers’ production demands and won their high recognition.

Solar is dedicated to bringing proven technology and experience to make customers more successful with recognizable commercial and environmental benefits. In January 2014, thanks to the use of Solar equipment, Solar China customer Henan-Chengyu Machinery Co., Ltd. received the prestigious “Certificate of Avoided GHG Emissions” from the US Environmental Protection Agency as the first Chinese company to garner the certificate. In January 2015, Solar China customer Shanxi Liheng Steel was the second Chinese company to obtain such certificate.



## Milestones

### 1963

- | Sold two Saturn® 10 packages to Taiwan

### 1986

- | Sold two Centaur® 40 compressor sets to the Chinese mainland

### 1992

- | Set up a representative office in Beijing

### 2006

- | Signed long term Strategic Agreement between Solar Turbines Incorporated and China National Offshore Oil Corporation

### 2007

- | Set up China service area to handle all aftermarket business in China

### 2011

- | Found Solar Turbines (Beijing) Trading & Services Co., Ltd.

### 2014

- | Signed agreement concerning long term strategic cooperation between Solar Turbines International Company and China National Petroleum Corporation

# 天津 TIANJIN



# 亚实履带（天津）有限公司

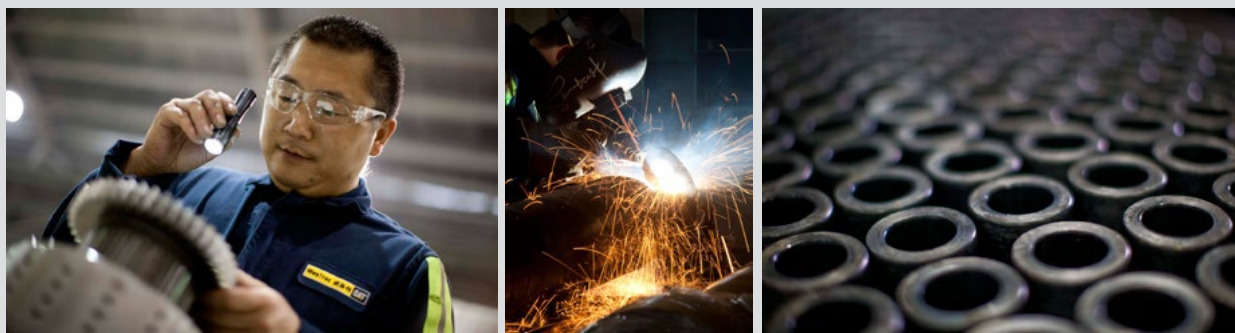
亚实履带（天津）有限公司（“亚实履带”）成立于1997年9月，由卡特彼勒（中国）投资有限公司、SCM新加坡控股私人有限公司和日本SNT株式会社合资设立。公司坐落在天津港保税区，占地54,000平方米，共有约400名员工，为美国卡特彼勒公司旗下工厂及其OEM客户提供高质量低成本的液压挖掘机和推土机底盘系统，包括支重轮、托链轮、链条总成和履带总成。

亚实履带是卡特彼勒在亚洲投资建立的第一家底盘工厂。自成立以来，公司凭借专业的管理和先进的技术，迅速发展壮大，不断提高员工凝聚力，追求卓越的产品质量和可持续发展。公司严格遵循卡特彼勒生产体系，通过卓越制造和研发创新，不断引入新产品，为更广阔的市场提供服务。

2008 年之前，亚实履带专为液压挖掘机提供相关底盘产品，并在 2008 年将产品线进行拓展，推出了推土机的相关底盘系统。到目前为止，亚实履带已成功为卡特彼勒 D3 到 D8 系列推土机提供相关产品组合。特别是，D8R 推土机履带的顺利量产对亚实履带的产品线是一个崭新的起点，表明亚实履带具备了生产大型推土机履带的能力。同时，其产品的工艺和精细程度也获得了提高，进一步提升了公司的产品竞争力。

秉承卡特彼勒正直、卓越、团队合作、承诺、可持续性的价值观，亚实履带形成了独具特色的企业文化，并积极履行企业社会责任。通过开展一系列能源管理项目，亚实履带的生产运营实现了成立以来的最低能耗。此外，亚实履带的志愿者团队也通过参与卡特彼勒基金会支持的相关公益项目以及支持困难学生、捐衣物等活动不遗余力的回馈着社会。亚实履带还获得了天津港保税区“百强企业”和天津市“先进外商投资企业”称号。

长久的质量保证、出色的发货表现、有竞争力的成本和优质的客户服务一直以来都是亚实履带所不断追求的目标。亚实履带的成功也为卡特彼勒在中国的长远发展打下坚实的基础，实践着卡特彼勒对中国的长期承诺。



## 里程碑

**1997**

获得营业执照

**1999**

新厂房开业庆典  
第一条履带下线

**2001**

获得 ISO 9001:2008 质量管理体系认证证书

**2002**

获得 ISO 14001:2004 环境管理体系认证证书

**2008**

第一条履带式推土机配套履带下线  
第二十万条履带下线

**2014**

举办 15 周年庆典





# AsiaTrak (Tianjin) Ltd.

AsiaTrak (Tianjin) Ltd. ("AsiaTrak") is a joint venture incorporated in September 1997 by Caterpillar (China) Investment Co., Ltd. together with SCM Singapore Holdings Pte Ltd and SNT Corporation from Japan. AsiaTrak is located in Tianjin Port Free Trade Zone, covers an area of 54,000 square meters and has about 400 employees. AsiaTrak manufactures high-quality and low-cost undercarriage components for hydraulic excavators and track-type tractors, including track rollers, carrier rollers, link assemblies and track groups, for Caterpillar Inc.'s facilities and relevant Original Equipment Manufacturers (OEMs).

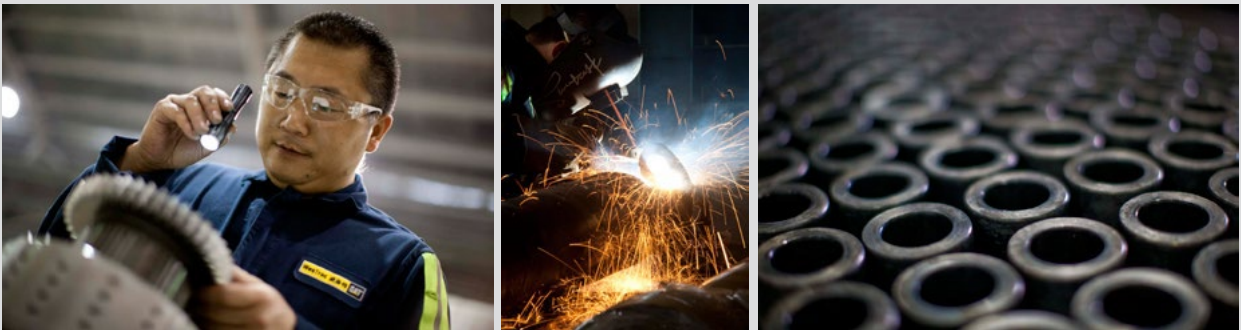


AsiaTrak is the first Caterpillar undercarriage facility in Asia. Since its establishment, AsiaTrak has grown and expanded rapidly by virtue of professional management and improved technologies. It continuously improves employee engagement and pursues product excellence and sustainable development. AsiaTrak strictly follows Caterpillar Production System and is committed to providing services for a broader market through its excellent manufacturing quality, research and innovation, as well as its continuous introduction of new products.

Before 2008, AsiaTrak specialized in producing undercarriage components for hydraulic excavators and it expanded its production line in 2008 by rolling out undercarriage components for track-type tractors. So far, it has successfully developed a product portfolio for Caterpillar tractor series from D3 to D8. Particularly, the mass production of the tractor-used track groups for D8R tractor opens a new chapter for AsiaTrak's production line, representing that AsiaTrak is capable of producing track groups for large track-type tractors. It has also improved the techniques and delicacy in its products, which have further enhanced its product competitiveness.

AsiaTrak proactively fulfills its corporate social responsibility, adhering to the Caterpillar Values in Action – Integrity, Excellence, Teamwork, Commitment and Sustainability, forming its own unique corporate culture. It has achieved the lowest energy consumption in manufacturing operations since the facility's establishment through a series of energy management projects. AsiaTrak employee volunteers have participated in several community services sponsored by Caterpillar Foundation, offered help to impoverished students and took part in clothing donation activities, devoting themselves to making contribution to the society. As a result, AsiaTrak was recognized as one of the "Top 100 Enterprises" by the Tianjin Port Free Trade Zone, and as an "Advanced Foreign-invested Company" by the Tianjin Municipal Government.

Long-term quality assurance, outstanding delivery performance, competitive costs and excellent customer service have always been theW goals pursued by AsiaTrak. Its success lays a solid foundation for the development of Caterpillar in China in the long run and also fulfill Caterpillar's long-term commitment to China.



## **Milestones**

### **1997**

Obtain Business License

### **1999**

New facility grand opening  
First track group rolled off the line

### **2001**

Received the ISO 9001:2008 certification for quality management systems

### **2002**

Received the ISO14001:2004 certification for environmental management systems

### **2008**

First track-type tractor-used track rolled off the line  
The 200,000th track group rolled off the line

### **2014**

Celebrate 15th anniversary

# 亚实动力系统（天津）有限公司

亚实动力系统（天津）有限公司是卡特彼勒公司在天津的全资子公司，于 2000 年在天津保税区（海港）正式成立，属于卡特彼勒电力事业部。公司专门从事 Cat®（卡特）品牌和 FG 威尔信品牌柴油发电机组的组装、测试及相关的配套服务，主要产品为 5.5kVA-900 kVA 的发电机组。亚实动力系统（天津）有限公司以及它的近 400 名员工在安全、质量、可靠性及价值观方面持续保持世界级的水平。



在卡特彼勒全球标准设计和流程的支持下，亚实动力系统（天津）将高速、严控的流程融入技术先进、经 ISO9001 和 14001 认证的装配环境。凭借最新技术和最佳装配流程，该厂成为卡特彼勒在亚洲建立的第一家、主要产品为发电机组的独资装配厂，为成功实施卡特彼勒“携手中国，共筑辉煌”战略发挥重要作用。

亚实动力系统（天津）有限公司  
地 址：天津市空港保税区西二道 2 号  
邮 编：300308

**CATERPILLAR®**  
**卡特彼勒**

## 企业社会责任

亚实动力系统（天津）有限公司不仅为客户提供最好的产品和服务，同时积极履行企业社会责任，关注可持续发展，严格按照国家及天津市相关标准对废气、废水、噪声进行监测确保达标排放，亚实动力系统（天津）工厂固体废弃物的可循环利用率达 95%。

亚实动力系统（天津）多年来一直参加卡特彼勒基金会公益林活动，支持环境保护。同时，亚实动力系统（天津）为天津市宁河县张子铺小学捐赠 1,000 本图书及书架，并为青海省察拉勾移民点捐赠文具及衣物。



## 大事记



**2000.11**

| 亚实动力系统（天津）有限公司成立。

**2005.1**

| 加入新成立的电力事业部。

**2010.8**

| 第 20,000 台发电机组下线。

**2002.1**

| 第一台发电机组发运。

**2008.5**

| 第 10,000 台发电机组发运。

**2010.11**

| 亚实动力系统（天津）有限公司成立 10 周年。

**2002.8**

| 第 100 台发电机组下线。

**2008.12**

| 搬至位于空港保税区的新厂房进行生产。

**2014.4.1**

| 连续安全工作 1,000,000 工时。

**2004.10**

| 第 1,000 台发电机组发运。

**2010.7**

| 获得由美国绿色建筑协会颁发的绿色能源与环境设计先锋奖金奖 (LEED)。

# Asia Power Systems (Tianjin) Ltd.

Asia Power Systems (Tianjin) Ltd. was established in 2000 at the Tianjin Port Trade Zone as Caterpillar wholly-owned subsidiary within the Electric Power Division. The facility provides assembly, testing and related services for Cat® branded and FG Wilson branded generator sets ranging from 5.5 to 900 kVA. Asia Power Systems (Tianjin) Ltd. and its approximate 400 employees maintain a reputation for world-class operations regarding safety, quality, reliability and values.



Fueled by Caterpillar global standard designs, the facility blends both high-speed and tightly controlled processes in a state-of-the-art ISO 9001 and 14001 certified assembly environment. With the latest technology and optimized assembly processes, the facility is Caterpillar's first wholly-owned prime product generator set assembly plant in Asia, and plays a significant role in the successful implementation of Caterpillar's Win in China strategy.

Asia Power Systems (Tianjin) Ltd.

Address: No.2 Xi'er Road, Tianjin Port Free Trade Zone  
(Airport), Tianjin, China  
Postcode: 300308

**CATERPILLAR®**  
卡特彼勒



## Corporate Social Responsibility

Asia Power Systems (Tianjin) Ltd. is not only concerned about delivering the best products and services for its customers, but also giving back to the community in which it operates. The facility is intensely focused on sustainability and has taken numerous steps to ensure emissions, wastewater and noise meet China and Tianjin standards, and that recycling of solid waste reaches 95 percent at the facility.

Facility employees have participated in the Caterpillar Foundation Charity Forest Project for years, supporting environmental protection. In addition, they have donated 1,000 books and bookshelves to Zhangzipu primary school in Tianjin, as well as school supplies and clothes to Chalagou settlement area in Qinghai Province.



## Milestones



**2000.11**

| Asia Power Systems (Tianjin) Ltd. was founded.

**2005.1**

| Joined the newly established Electric Power Division.

**2010.8**

| Held the 20,000th generator set celebration.

**2002.1**

| Delivered the first generator set.

**2008.5**

| Delivered the 10,000th generator set.

**2010.11**

| November, held 10-year anniversary celebration.

**2002.8**

| Delivered the 100th generator set.

**2008.12**

| Began production in the new facility located in Port Trade Zone.

**2014.4.1**

| Celebrated 1 million hours without recordable injuries.

**2004.10**

| Delivered the 1,000th generator set.

**2010.7**

| Received the LEED Gold Certification.



# 卡特彼勒（天津）有限公司



为你铸就。

卡特彼勒（天津）有限公司是卡特彼勒在天津成立的全资子公司，于 2010 年 11 月在天津空港经济区注册成立，是目前卡特彼勒在亚太最大的单体投资。这是继亚实履带和亚实动力之后，卡特彼勒在天津的第三家工厂，也是卡特彼勒在中国唯一一家生产大型发动机和发电机组的工厂。

公司占地25万平方米，主要生产卡特彼勒3500系列大型发动机及发电机组，产品应用于电力、石油、钻井、铁路、船舶、大型工业及矿业设备等领域。工厂投入全面运营后，将成为卡特彼勒在全球范围内专注于3500系列发动机及发电机组生产的第二大基地。

卡特彼勒（天津）有限公司

地址：天津市空港经济区环河西路 25 号

邮编：300308

电话：(86-22) 58096060



# Caterpillar (Tianjin)Ltd.



Caterpillar Tianjin Ltd. ("Caterpillar Tianjin") is a Caterpillar wholly-owned subsidiary. Established in Tianjin Airport Economic Area in November 2010, Caterpillar Tianjin has been the single largest investment of Caterpillar in the Asia-Pacific area so far and the only one large engine and generator sets producer in China. It is the third Caterpillar facility in Tianjin after AsiaTrak and AsiaPower systems Ltd.

Covering a land area of 250,000 square meters, the facility manufactures 3500 series engines and generator sets. The products can be used for various industries such as electric power generation, petroleum, well drilling, railway, marine, industrial and mining applications. Once fully operational, Caterpillar Tianjin will become Caterpillar's second largest global manufacturing base for 3500 series engine and generator sets by production capacity.

## Caterpillar (Tianjin) Ltd.

Address: No.25 Huanhe West Road, Tianjin Airport  
Economic Area, Tianjin, China  
Postcode: 300308  
Tel: (86-22) 58096060





# 卡特彼勒共享 服务中心



为你铸就

为了能够最佳化利用业务实践与系统平台及最大化利用区域的有效性,卡特彼勒在中国建立了共享服务中心(即卡特彼勒(中国)投资有限公司天津分公司)。

卡特彼勒共享服务中心

地 址: 天津市东丽区空港物流加工区中心大道

55 号皇冠国际广场 3 号楼科技大厦 6 层

邮 编: 300308

电 话: (86-22) 5816 7488

**CATERPILLAR®**  
卡特彼勒

卡特彼勒共享服务中心于 2006 年 9 月 11 日取得营业执照，2010 年前在天津开发区运营，随后办公室搬迁到天津自由贸易区（保税区），办公室面积 4,200m<sup>2</sup>，员工总数 185 人，为卡特彼勒各地的工厂及办事处提供各种支持服务，包括北京、天津、青岛、上海、无锡、苏州、南通、吴江、徐州和山东等。提供的服务包括财务、人力资源、人事数据管理、经销商的订单管理、信息技术服务支持和全球供应网络支持。





# Caterpillar Shared Services Center



Created to leverage the benefits of the best-in-class business practices and maximize regional effectiveness, Caterpillar established the Caterpillar Shared Services Center in China (also called Caterpillar (China) Investment Co., Ltd. Tianjin Branch).

## Caterpillar Shared Services Center

Address: 6/F, Building 3, Crown International Plaza, No. 55,  
Zhongxin Dadao, Tianjin Airport Industrial Park, Tianjin  
Zip Code: 300308  
Tel: (86-22) 5816 7488

**CATERPILLAR®**  
**卡特彼勒**

Caterpillar Shared Services Center received its business license in 2006. Prior to 2010, it was operated in Tianjin Economic and Technological Development Area at which time the office moved to Tianjin Free Trade Zone. With an office area of 4,200 m<sup>2</sup>, the facility has 185 employees, providing support services to various Caterpillar facilities located in Beijing, Tianjin, Qingdao, Shanghai, Wuxi, Suzhou, Nantong, Wujiang, Xuzhou and Shandong. Services include accounting, HR, personnel data management, dealer orders management, information technology and global supply network.



# 河南 HENAN



# 卡特彼勒（郑州）有限公司

卡特彼勒（郑州）有限公司（“卡特彼勒郑州”）是卡特彼勒公司旗下的全资子公司。公司坐落于河南省郑州市荥阳市，主要以生产井工长壁采煤设备中的液压支架为主。作为卡特彼勒采矿井工事业战略的重要组成部分，卡特彼勒郑州致力于成为全球客户提供高端液压支架以及相关备件的生产者。

卡特彼勒郑州工厂生产的液压支架在中国有着广泛的客户群，设备以安全耐用并适应最严苛的采矿环境而著称，得到客户的广泛认可。与此同时，卡特彼勒郑州生产的产品也远销国际市场。



卡特彼勒郑州工厂全面施行卡特彼勒生产管理体系，不断实行一系列重大项目，取得了长足进步和全面发展。先后获得了 ISO9001: 2008 质量管理体系认证、ISO14001: 2004 环境管理体系认证、OHSAS18001:2007 职业健康安全管理体系认证和 ISO3834 焊接质量认证。卡特彼勒郑州也已经打造出了一支出色的国际认证的焊工队伍。

在“正直、卓越、团队、承诺、可持续性”的卡特彼勒行动价值观的指导下，卡特彼勒郑州工厂打造出一支极富凝聚力的员工队伍。

目前，卡特彼勒郑州工厂已成为卡特彼勒在中国的矿山设备生产基地，在实现卡特彼勒“携手中国，共筑辉煌”承诺中发挥着重要作用。

卡特彼勒（郑州）有限公司

地址：河南省郑州市荥阳广武镇广古路

邮编：450103

电话：(86-371) 5691 2731

传真：(86-371) 5691 2666

**CATERPILLAR®**  
**卡特彼勒**

## 企业社会责任

卡特彼勒郑州积极履行企业社会责任，关注可持续发展。为降低煤炭开采过程带来的地质和环境危害，卡特彼勒郑州投入大量资金与人力，与高校展开合作，共同研制开发了充填液压支架系列产品。研制生产的充填液压支架已在全国多个矿区使用，产生了良好的环境效益、经济效益和社会效益。

卡特彼勒郑州工厂致力于成为对有责任心的当地企业公民。2014年初，卡特彼勒郑州工厂一百余名志愿者在郑州郊区共同种植了卡特彼勒基金会公益林。此外，卡特彼勒郑州工厂还大力支持当地的教育事业。工厂在2013年9月份举办活动，为贫困大学生提供奖学金进行资助。在2014年3月份，为当地学校捐赠了热水器、衣服、书包、文具、乒乓球案等物品，五千余名师生直接受益。



# Caterpillar (Zhengzhou) Limited

Caterpillar (Zhengzhou) Ltd. (Caterpillar Zhengzhou) is Caterpillar's wholly owned company. Located in Xinyang, Henan Province, Caterpillar Zhengzhou mainly manufactures roof supports for underground longwall coal mining. As an important part of Caterpillar's underground mining strategy, Caterpillar Zhengzhou aims to be a manufacturer of lifecycle value roof supports and parts for customers worldwide.

Caterpillar Zhengzhou serves a large Chinese customer base. Its equipment is highly efficient and able to meet the most demanding requirements, winning wide recognition from customers. The products of Caterpillar Zhengzhou are also exported to the international market.

Strictly following the Caterpillar Production System and adhering to Caterpillar's corporate culture, Caterpillar Zhengzhou has launched a series of projects and made substantial achievements. Caterpillar Zhengzhou has achieved numerous key certifications including ISO9001:2008 quality management system certification, ISO14001:2004 environmental management system certification, OHSAS 18001:2007 occupational health and safety management system certification and ISO3834 welding quality certification. The facility has built a strong team of accredited welders.



Under the guidance of Our Values in Action – Integrity, Excellence, Teamwork, Commitment and Sustainability – Caterpillar Zhengzhou has fostered a highly-engaged employee team.

Today, Caterpillar Zhengzhou has become Caterpillar's key mining equipment manufacturing facility in China, playing a significant role in the successful implementation of a winning strategy in China.

## Caterpillar (Zhengzhou) Limited

Address: Guanggu Road, Guangwu Town, Xinyang,  
Zhengzhou, Henan Province, China  
Postcode: 450103  
Tel: (86-371) 56912731  
Fax: (86-371) 56912666

**CATERPILLAR®**  
**卡特彼勒**



## Corporate Social Responsibility

Caterpillar Zhengzhou has proactively fulfilled its corporate social responsibility with a focus on sustainability. Caterpillar Zhengzhou has invested abundant capital and manpower in cooperation with universities to develop a series of mining equipment, utilizing backfill technology in order to mitigate the geological and environmental risks in the process of coal mining. The mining equipment has been proven to have good environmental, economic and social results in mines throughout China.

Caterpillar Zhengzhou is committed to being a responsible citizen to the community. In early 2014, more than 100 volunteers from Caterpillar Zhengzhou participated in the Caterpillar Foundation Charity Forrest project to plant trees in the suburb of Zhengzhou. Moreover, Caterpillar Zhengzhou has provided a lot of support to local education. In September 2013, the company provided scholarships to university students in need. In March 2014, Caterpillar Zhengzhou donated school supplies and clothes to local schools, which benefited more than 5,000 students.



# 河北 HEBEI

# 卡特彼勒（廊坊） 采矿设备有限公司

卡特彼勒（廊坊）采矿设备有限公司（“卡特彼勒廊坊”）是卡特彼勒旗下的全资子公司。1998 年，卡特彼勒廊坊落户于河北廊坊市经济技术开发区。成立之初，公司以生产井工采煤用的刮板运输机溜槽为主。随着公司的不断发展，以及新的卡特彼勒采矿井工事业战略的推进，卡特彼勒廊坊致力于成为全球客户提供成套高端刮板运输机的制造者。



卡特彼勒廊坊工厂生产的采矿设备遍布全球，设备以高产高效并适应最严苛的采矿环境而著称。

卡特彼勒廊坊工厂严格遵循卡特彼勒生产体系，秉承先进企业文化，在质量、安全、供应链整合、员工凝聚力等方面表现卓越。同时，卡特彼勒廊坊工厂与世界接轨，取得了包括 ISO9001:2008、ISO3834-2，以及 ISO14001:2004+Cor.1:2009 和 BS OHSAS 18001:2007 在内的多项国际认证。此外，卡特彼勒廊坊还拥有多名获得专业机构认证的国际焊接工程师、国际焊接技师和国际焊接质检员。

在“正直、卓越、团队、承诺、可持续性”的卡特彼勒行动价值观的指导下，卡特彼勒廊坊打造出一支极富凝聚力的员工队伍。

目前，卡特彼勒廊坊工厂已成为卡特彼勒在中国的矿山设备生产基地之一，在实现卡特彼勒“携手中国，共筑辉煌”承诺中发挥着重要作用。

卡特彼勒（廊坊）采矿设备有限公司

地 址：河北省廊坊市廊坊经济技术开发区金源东道 22 号

邮 编：065001

电 话：(86-316) 6086841/6086840

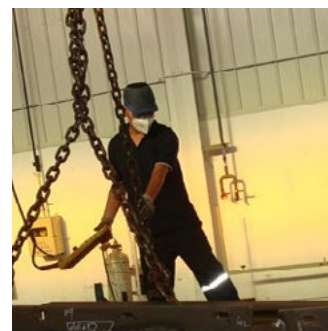
**CATERPILLAR®**  
**卡特彼勒**



## 企业社会责任

卡特彼勒廊坊积极履行企业社会责任，关注可持续发展，特别是开展了一系列项目以达到减排的目的。卡特彼勒廊坊对工厂所有的废气废物都会进行认真的无害处理，达到国家标准。

在社会慈善公益方面，并在 2008 年汶川地震之后，卡特彼勒廊坊及其员工积极响应国家号召，捐款捐物，奉献爱心。



## 大事记



### 1998

- | 卡特彼勒（廊坊）采矿设备有限公司正式成立。

### 2002

- | 液压车间（二期）正式建成投产。

### 2003

- | 取得焊接质量证书 DIN 18800-7 和 EN ISO 3834-2。

### 2004

- | 公司通过 ISO 9001:2008 质量管理体系认证。
- | 获评中国外商投资企业协会颁发的全国外商投资“双优”企业。

### 2008

- | 扩建三期厂房，增加生产能力。

### 2009

- | 获得廊坊开发区安全生产委员会颁发的“安全生产管理进步奖”荣誉称号。

### 2009-2012

- | 连续被评为“廊坊开发区企业纳税大户”并获得“重要贡献奖”、“贡献进步奖”、“企业管理精英奖”荣誉称号。

### 2011

- | 扩建四期厂房，增加生产能力。

- | 成为卡特彼勒旗下的全资子公司。

### 2012

- | 通过并取得 ISO 14001&OHSAS 18001 认证证书。
- | 获得廊坊开发区安全生产委员会颁发的“基层安全生产工作先进集体”荣誉称号。

### 2013

- | 获得廊坊开发区安全生产委员会颁发的“安全生产宣传教育先进单位”荣誉称号。
- | 由廊坊市安全生产协会颁发“安全生产标准化Ⅲ级企业（机械）”。
- | 获得卡特彼勒全球颁发的“卓越环境银奖”。

# Caterpillar (Langfang) Mining Equipment Co., Ltd.

Caterpillar (Langfang) Mining Equipment Co., Ltd. ("Caterpillar Langfang") is a wholly-owned facility of Caterpillar. In 1998, Caterpillar Langfang was established and began production in Langfang Economic & Technical Development Zone, Hebei Province. At the beginning, the company specialized in manufacturing of AFC line pans in coal mining. With the company's continuous development, and the progress of Caterpillar's underground mining strategy, Caterpillar Langfang is committed to becoming a manufacturer of premium AFC for customers worldwide.



Caterpillar Langfang serves a large global customer base. Its equipment is highly efficient and able to meet the most demanding requirements.

Strictly following the Caterpillar Production System (CPS) and adhering to Caterpillar's corporate culture, Caterpillar Langfang has made substantial achievements in terms of quality, safety, supply chain integration and employee engagement. In addition, Caterpillar Langfang has obtained numerous key international certifications including ISO9001:2008, ISO3834-2, ISO14001:2004+Cor.1:2009 and BS OHSAS 18001:2007. Caterpillar Langfang also has many accredited welding engineers, including international certified welding engineers, international certified welding technicians and international welding quality specialists.

Under the guidance of "Our Values in Action" – Integrity, Excellence, Teamwork, Commitment, and Sustainability – Caterpillar Langfang has fostered a highly-engaged employee team.

Today, Caterpillar Langfang has become one of Caterpillar's key mining equipment manufacturing facilities in China. Caterpillar Langfang is committed to playing a significant role in the successful implementation of Caterpillar's winning strategy in China.

**Caterpillar (Langfang) Mining Equipment Co., Ltd.**

Address: No. 22 Jinyuan Dongdao, Langfang Economic and Technological Development Area, Langfang, Hebei Province, China

Postcode: 065001

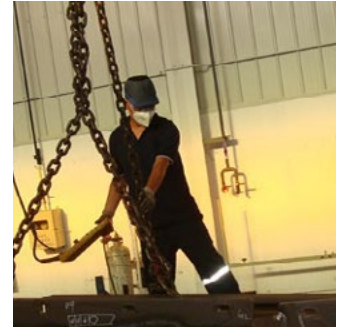
Tel: (86-316) 6086841/6086840

**CATERPILLAR®**  
**卡特彼勒**

## Corporate Social Responsibility

Caterpillar Langfang is committed to corporate social responsibility with a focus on sustainability. The facility has taken a series of measures to reduce emissions and ensure exhaust gas and waste water is treated and discharged in compliance with national environmental requirements.

In terms of community involvement, Caterpillar Langfang and its employees make donations and contributions after the 2008 Wenchuan earthquake.



## Milestones



### 1998

- | Caterpillar Langfang was established.

### 2002

- | Completed hydraulic workshop (phase II) .

### 2003

- | Obtained welding certification of DIN 18800-7 and EN ISO 3834-2.

### 2004

- | Obtained ISO 9001:2008 certification
- | Recognized as Outstanding Enterprise by the China Association of Enterprises with Foreign Investment.

### 2008

- | Completed facility phase III expansion, enhancing production capacity.

### 2009

- | Awarded the Safe Production Improvement Award by Langfang Development Zone Safety Committee.

### 2009-2012

- | Recognized as Best Tax Contributor in Langfang, Best Langfang Contributor, Contribution and Improvement Award and Operation Elite Award annually.

### 2011

- | Completed facility phase IV expansion, further enhancing production capacity.
- | Became wholly-owned facility of Caterpillar Inc.

### 2012

- | Obtained ISO 14001&OHSAS 18001 certification

- | Recognized as Best Safe Production Enterprise by Langfang Development Zone Safety Committee.

### 2013

- | Awarded as Best Safe Production Publicity and Education Enterprise by Langfang Development Zone Safety Committee.
- | Certified as Enterprise with Tier-III Work Safety Standardization (Machinery) by Langfang Municipal Safe Operation Association.
- | Awarded the Caterpillar Environmental Excellence Silver Award.



# 山东 SHANDONG

# 卡特彼勒（青州）有限公司

卡特彼勒（青州）有限公司（“卡特彼勒青州”）前身为山东山工机械有限公司，成立于 1958 年，2003 年重组改革为股份制企业，2008 年完全收购成为卡特彼勒全资子公司，2013 年 11 月正式更名为现名。现在山工品牌成为卡特彼勒的重要品牌之一，支持在中国快速增长的客户群体。卡特彼勒青州现有职工近 1,900 人，坐落于山东省青州市，高速贯通，交通发达。作为卡特彼勒的全资子公司，卡特彼勒青州目前生产“Cat®（卡特）”和“山工机械”两大品牌产品。山工机械品牌产品包括装载机、推土机、压路机、平地机、垃圾压实机等整机及路面机械结构件、工作机具等零部件，并在 2014 年 3 月推出 Cat（卡特）950 GC 轮式装载机。



山工机械品牌支持卡特彼勒在中国工程机械行业不断增长的客户群。为提高卡特彼勒在中国及其他增长市场的竞争力，2009 年起，卡特彼勒加快了对青州工厂的再投资和建设速度，扩大各种主机产品及零部件业务的产能。在青岛，卡特彼勒投巨资建立了世界领先水平的研发中心，汇聚全球顶尖科研人员和卡特彼勒青州研发团队共同组建了一支拥有高水平人才的研发队伍，针对市场需求不断研发出创新型产品，以满足不同层次的客户需求。

卡特彼勒青州具备中国领先的营销模式和完善的服务支持系统，山工机械品牌产品的国内营销网络体系遍布全国，在国内拥有多家各级代理商，80 多个授权维修服务中心，为用户提供高附加值的产品和服务。在海外，借助卡特彼勒全球销售网络体系，卡特彼勒青州建立覆盖全球 30 多个国家和地区的“SEM”品牌海外销售网络体系，包括东南亚、非洲和中东、俄罗斯及独联体国家、拉丁美洲、中美地区。

卡特彼勒（青州）有限公司  
地 址：山东省青州市南环路 12999 号  
邮 编：262500  
电 话：(86-536) 6138511  
传 真：(86-536) 6138512

**CATERPILLAR®**  
**卡特彼勒**

## 企业社会责任

长期以来，卡特彼勒青州一直注重企业社会责任，并积极回馈社会。

自 2001-2006 年，卡特彼勒青州为周围村庄修路打井；

2004-2007 年，3 年内为青州云河初中、东关回中等学校改善教育设施，捐赠物品约 10 万余元；

2008 年，为南方雪灾捐款 47930 元；

2008 年，卡特彼勒青州累计为汶川地震灾区捐款 80.3 万元；

2010 年，卡特彼勒青州为玉树地震灾区捐赠价值 38 万元的装载机一台，并捐款 50.14 万元；

2013 年 10 月，参加卡特彼勒基金会希望图书室项目，帮助当地困难小学粉刷图书室并捐赠 2,000 册图书和 4 个书架；

2014 年 4 月，与青州市林业局合作种植卡特彼勒基金会公益林 20,750 棵。

2015 年 4 月，参加卡特彼勒基金会公益林青州植树活动

2015 年 9 月，参加卡特彼勒全球志愿月活动，向云门山街道的乡村学校驼山小学捐赠图书 200 余册，并提供免费心理健康辅导。



## 大事记



### 1958

| 山东山工机械有限公司成立。

### 1978

| 生产出国内第一台定轴式装载机。

### 2003

| 山东山工机械有限公司重组改革为股份制。

### 2005.3.22

| 中美合资山东山工机械有限公司正式成立。

### 2008

| 卡特彼勒完成收购山东山工机械有限公司。

### 2008.8

| 山东山工机械有限公司举行建厂 50 周年大型庆典活动。

### 2012.1.13

| 山东山工机械有限公司新桥箱车间启用暨推土机项目奠基仪式隆重举行。

### 2012.3

| SEM650 装载机获得卡特彼勒“董事长产品质量奖”。

### 2012.7

| 获得卡特彼勒建造业与高增长市场运营卓越奖金奖。

### 2012.11

| 荣获卡特彼勒环境改进、人机工程改进、健康与安全三个类别的“EHS 卓越项目奖”。

### 2013.2

| 首台 LNG 装载机试制成功。

### 2013.11

| 山东山工机械有限公司正式更名为“卡特彼勒（青州）有限公司”。

### 2014.3

| 卡特彼勒青州推土机 SEM816 LGP 获得“中国工程机械年度产品 TOP50”技术创新金奖。

| 卡特彼勒（青州）有限公司更名暨推土机工厂正式投产仪式隆重举行。

| 推出第一台 Cat 950 GC 轮式装载机。



# Caterpillar (Qingzhou) Ltd.

Caterpillar (Qingzhou) Ltd. ("Caterpillar Qingzhou"), formerly known as Shandong SEM Machinery Co., Ltd., was founded in 1958 and reorganized as a share-holding company in 2003. In 2008, Caterpillar Qingzhou became a wholly-owned subsidiary of Caterpillar Inc. In November 2013, the company changed its legal entity name to the current name. Today SEM is an important brand in the Caterpillar portfolio, supporting a fast-growing China customer base. Caterpillar Qingzhou employs approximately 1,700 employees and is located in Qingzhou City, in eastern Shandong Province, which is easily accessible by major highways. At a wholly-owned subsidiary of Caterpillar Inc., Caterpillar Qingzhou manufactures both Cat® brand and SEM brand products. SEM brand products include wheel loaders, soil compactors, motor graders, track type tractors, landfill compactors, pavement machinery components and work tools. The facility also launched the first Cat 950 GC wheel loader in March 2014.



SEM supports fast-growing customers in China's construction and engineering industry. To enhance Caterpillar's competitive position in China and other growing markets, the company has increased investment and expansion at Caterpillar Qingzhou facility since 2009. With the support of local government, Caterpillar Qingzhou has acquired land near the facility to expand capacity of product lines and other key components. In Qingdao, Caterpillar has made a large investment to build a world-class research and development center, attracting top researchers from around the globe, and the research and development team work to continuously develop innovative products that meet market demand and specific customer requirements.

Leveraging the leading distribution model and complete service support system, Caterpillar Qingzhou has a broad distribution network across China with domestic dealers at all levels and more than 80 maintenance and service centers providing high value products and service. The well-established international distribution network reaches more than 30 countries, including Southeast Asia, Africa and Middle East, Russia and CIS countries, Latin and Central America.

## Caterpillar (Qingzhou) Ltd.

Address: No.12999 Nanhuan Road, Qingzhou City,  
Shandong Province, China  
Post code: 262500  
Tel: (86-536) 6138511  
Fax: (86-536) 6138512

**CATERPILLAR®**  
**卡特彼勒**

## Corporate Social Responsibility

Caterpillar Qingzhou takes social responsibility seriously and focuses on ways to give back to the community.

From 2001 to 2006, Caterpillar Qingzhou built roads and dug wells for villages near the facility;  
From 2004 to 2007, Caterpillar Qingzhou donated school supplies valued about RMB100,000 for Yunhe Middle School and Dongguan Hui Minority Middle School;

In 2008, Caterpillar Qingzhou donated RMB47,930 for Southern China's snow disaster;

In 2008, Caterpillar Qingzhou donated RMB803,000 for the disaster stricken area caused by the Wenchuan earthquake;

In 2010, Caterpillar Qingzhou donated a loader valued RMB380,000 and our employees donated RMB501,400 to the disaster stricken area in the aftermath of the Yushu earthquake;

In October 2013, Caterpillar Qingzhou participated in Caterpillar Foundation Hope Library Project, helping a local primary school to paint the library and donating 2,000 books and 4 bookshelves;

In April 2014, Caterpillar Qingzhou and Qingzhou Forestry Bureau together planted 20,750 trees for Caterpillar Foundation Charity Forest.

In April 24, 2015, Caterpillar Qingzhou participated in Caterpillar Foundation Charity Forest

In September 22, 2015, Caterpillar Qingzhou participated in the Caterpillar Foundation-initiated Global Month of Service, visiting the rural Tuoshan Primary School in Yunmenshan street with more than 200 books and free mental health counseling



## Milestones



### 1958

- | The company was established.

### 1978

- | Manufactured the first fixed axle loader in China.

### 2003

- | Reorganized as a share-holding company .

### 2005.3.22

- | Officially established the Sino-US joint venture Shandong SEM Machinery Co., Ltd.

### 2008

- | Caterpillar completed the full acquisition of the company.

### 2008.8

- | Held the 50th anniversary celebration.

### 2012.1.13

- | Held the opening ceremony for the new axle box workshop.

### 2012.3

- | The SEM650 Wheel Loader won the "Chairman's Product Quality Award" .

### 2012.7

- | Won Caterpillar's "CI&GM" Golden Prize for outstanding management.

### 2012.11

- | Won Caterpillar EHS Prize for outstanding EHS projects (including Environment Excellence, Ergonomics Excellence and Health & Safety Excellence).

### 2013.2

- | Successfully made the trial production of LNG loader.

### 2013.11

- | Officially renamed as Caterpillar (Qingzhou) Ltd.

### 2014.3

- | SEM816 LGP won Technology Innovation Golden Prize of "China's Top 50 Construction Machinery Products of the Year".
- | Held the grand renaming ceremony of Caterpillar (Qingzhou) Ltd. and opening ceremony of track type tractor factory.
- | Launched the first Cat 950 GC wheel loader.

# 上海 SHANGHAI



# 卡特彼勒再制造工业 (上海) 公司

卡特彼勒再制造工业(上海)公司(“卡特彼勒再制造上海”)成立于2005年12月,坐落于中国上海临港产业制造园,是卡特彼勒在中国的第一家再制造企业。



为你铸就™

秉承着可持续发展的战略,卡特彼勒再制造上海工厂利用先进的工程技术,将废旧的工程机械零部件进行专业化的修复和再制造,使其在性能和质量上达到全新产品的水平,以帮助客户降低成本。公司在生产过程中节省了大量的能源和资源,极大地减少了废物和废气,有力地促进了环境友好型社会的建设,成为卡特彼勒在中国的可持续发展方面的典范。

卡特彼勒再制造工业(上海)公司

地址:上海浦东新区层林路1555号临港产业

制造园3号厂房

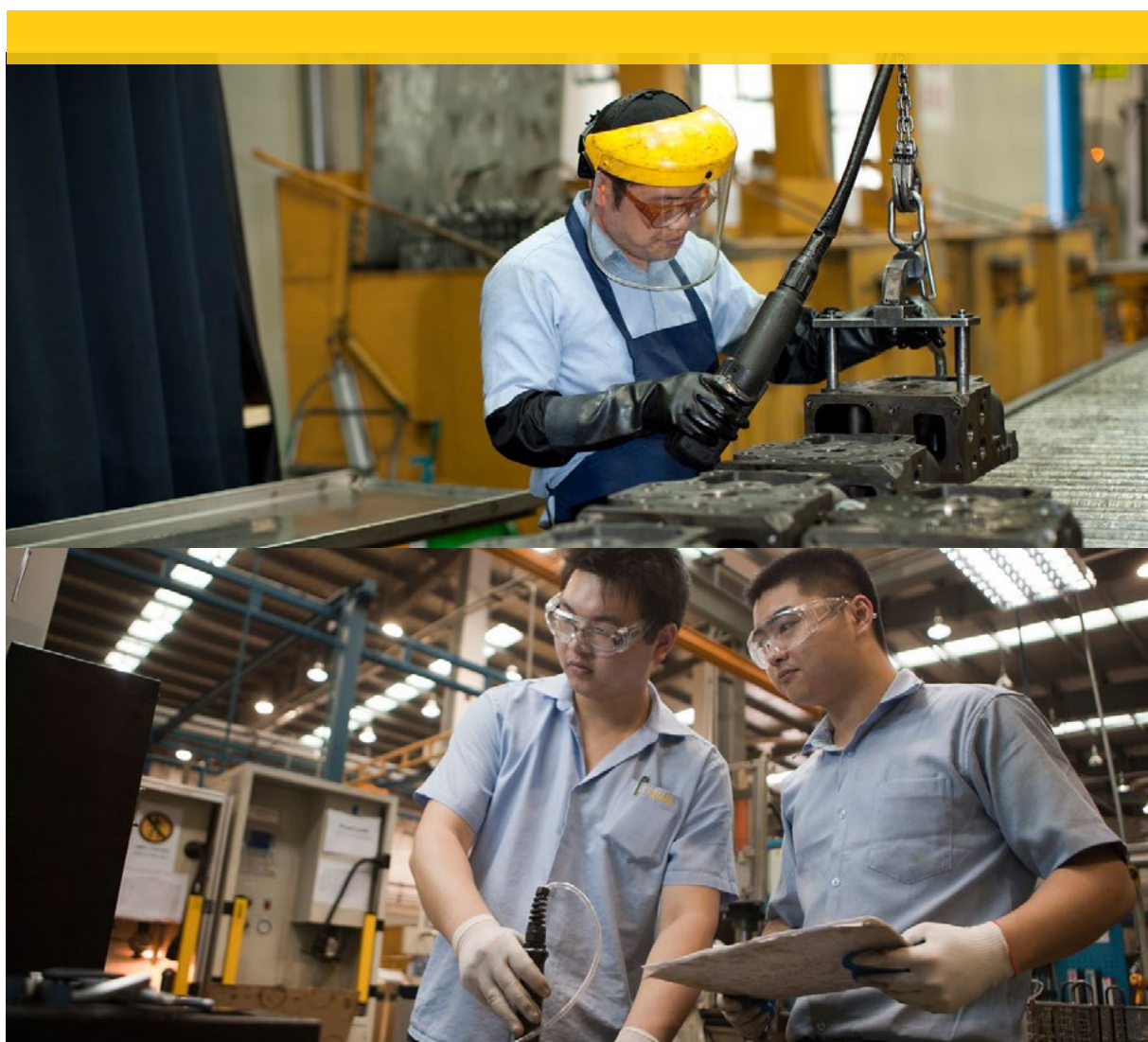
邮编:201306

**CATERPILLAR®**  
卡特彼勒

卡特彼勒再制造上海公司目前的再制造产品有三大类：液压产品（液压泵）、发动机零部件产品（油泵、水泵、缸盖、油缸总成）和燃油系统产品（喷油器）。此外，卡特彼勒再制造上海公司还对外部企业和其他卡特彼勒业务部门提供相关的服务。

经过数年的发展，卡特彼勒再制造上海工厂于 2012 年 7 月庆祝了第二座厂房开幕式，随着生产规模的扩大，如今工厂的员工已增加至 110 多名。再制造上海工厂秉承以人为本、安全第一的方针，在安全生产方面也取得了优异成绩，在 2013 年 1 月 14 日举行了无可记录伤害 1,000 天的庆祝活动。

秉承着“正直、卓越、团队、承诺和可持续性”的价值观，卡特彼勒（上海）再制造公司积极参加社会公益活动，包括为特殊教育学校的学生检查视力，以及组织员工参加植树活动等，为建设美好的社会做出自己的努力。





# Caterpillar Remanufacturing Services (Shanghai) Co., Ltd

Caterpillar Remanufacturing Services (Shanghai) Co. Ltd (Caterpillar Reman Shanghai) was established in December 2005. Located in the Lingang Industrial Park, Shanghai, Caterpillar Reman Shanghai is Caterpillar's first remanufacturing company in China



**BUILT FOR IT.**

By carrying on the strategy of sustainability, Caterpillar Reman Shanghai has been utilizing advanced engineering technologies to undertake professional salvage and remanufacturing of used machine parts, which brings their functions and quality up to par with brand new parts, allowing customers to save on costs. A great amount of energy and resources has been saved in the process of remanufacture, while waste and exhaust gas have been largely reduced, which has greatly contributed to building an environmentally-friendly society in China, and is a model for Caterpillar operations in China in terms of sustainability.

Caterpillar Remanufacturing Services (Shanghai) Co., Ltd  
Address: Plant 3, Lingang Industrial Park, No.1555 Cenglin Road, Pudong New Area, Shanghai, China  
Post Code: 201306

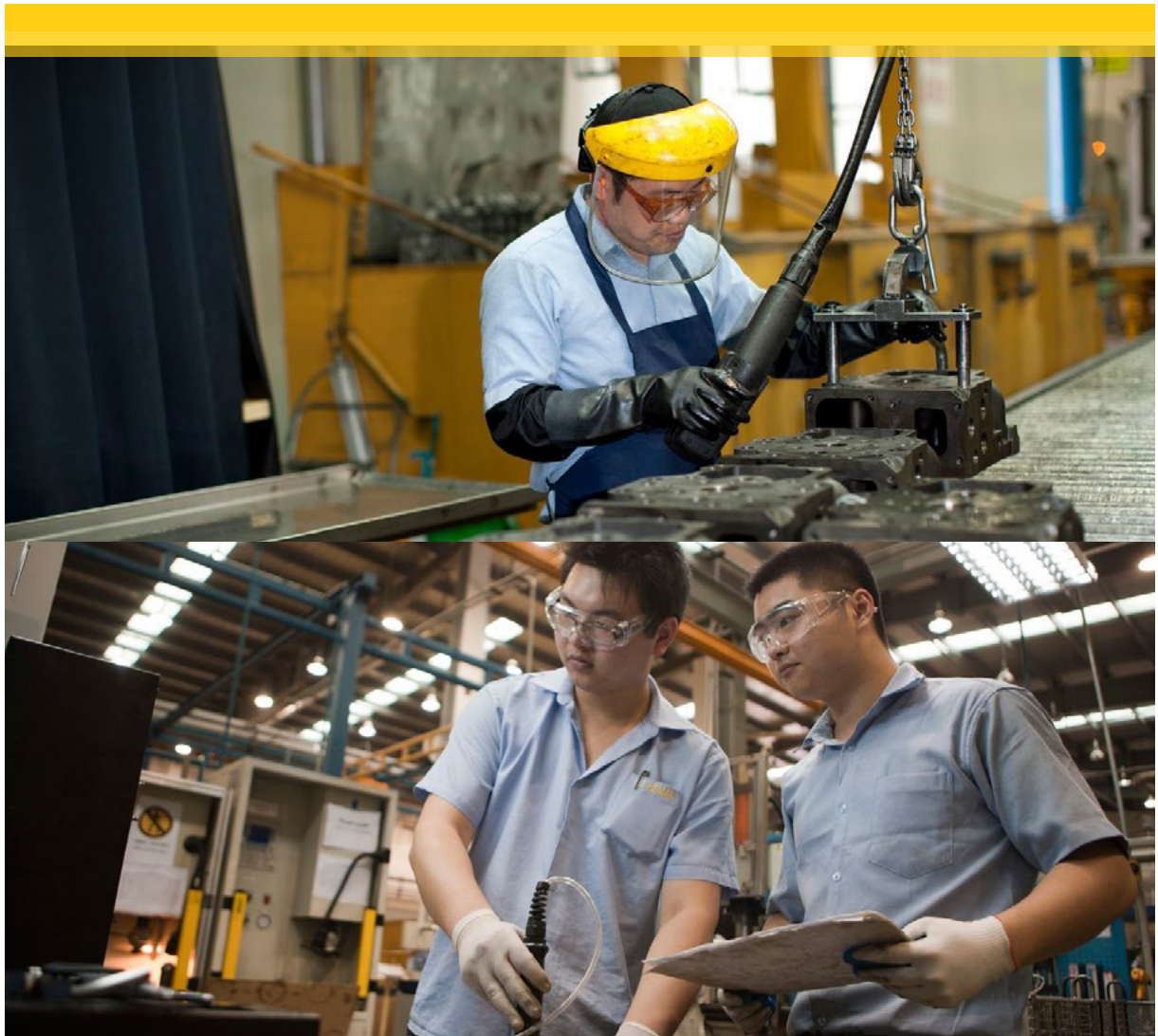
**CATERPILLAR®**  
**卡特彼勒**



Remanufactured products of Caterpillar Reman Shanghai include hydraulic components (hydraulic pumps and motors), engine components (oil pumps, water pumps, cylinder heads and cylinder packs) and fuel systems (fuel injectors). Moreover, Caterpillar Reman Shanghai also provides services to external companies and other Caterpillar businesses in China.

After years of continued development, Caterpillar Reman Shanghai held its second plant grand opening in July 2012. Along with the expansion of the production capacity, the Shanghai team now has more than 110 employees. In accordance with people-oriented and safety first strategy, Caterpillar Reman Shanghai has made great achievement in safe production, and the facility celebrated its 1,000 days of no RIF (Recordable Injury Frequency) on January 14, 2013.

Based on Caterpillar's Our Values in Action – Integrity, Excellence, Teamwork, Commitment and Sustainability – Caterpillar Reman Shanghai has been very active in participating in public welfare activities, including helping check special education students' eyesight and planting trees in Shanghai, in an effort to build a better society.



# 卡特彼勒船用柴油机贸易 (上海) 有限公司

卡特彼勒船用柴油机贸易(上海)有限公司在船舶及海洋石油领域,被业内熟称为“马克亚太区总部”。它是卡特彼勒的全资经销商,专业致力于中速发动机及系统集成业务,拥有马克船用、马克石油和 EMD 品牌产品的代理资质。上海总部有大约 50 名员工,作为直销和服务代理商,为大中华区的客户提供产品和技术服务支持。与上海总部规模相似的新加坡分公司为其他亚太区域的客户提供产品和技术服务支持。



卡特彼勒船用柴油机贸易(上海)有限公司主要业务有:船用推进发动机与齿轮箱,传动轴和螺旋桨的整体打包业务;船用发电机组和电力推进系统;适用于近海石油的主发电机组及全套辅助系统;提供马克(MaKTM)产品从项目启动、产品销售到调试,从本地备件供应、配送、维护、车间及现场修理,到发动机升级以及客户培训等的全套服务。

公司位于上海康桥和广东顺德的两个车间可以提供发动机大修服务,包括缸头、活塞、缸套、喷油泵、喷油嘴及其他主要部件。服务团队完全熟悉船舶业务和石油工业需要,即使在较为紧迫的船舶维修窗口期或者停产期间,也能信守对时间及质量的承诺,扭转不利局面。

卡特彼勒船用柴油机贸易(上海)有限公司  
地址:中国上海延安西路1319号(定西路)  
利星国际广场25楼  
邮编:200050  
电话:(86-21) 6226 2200  
传真:(86-21) 6226 4500

**CATERPILLAR®**  
卡特彼勒



以经验丰富的老员工为骨干，新员工为辅助的混合梯队铸就了稳定及持续发展的企业文化，加强了客户关系，从而促进了马克品牌发动机销售及国内用户的增长。





# Caterpillar Marine Trading (Shanghai) Co., Ltd.

Caterpillar Marine Trading (Shanghai) Co., Ltd. is well known in the marine and oil & gas industries as "MaK Asia." MaK Asia is a wholly-owned Caterpillar dealer that specializes in medium-speed engines and systems. Its brands include MaK Marine, CM Petroleum and EMD. The Shanghai headquarters has about 50 employees and serves as a direct sales and service dealer to support customers in the Greater China region. A similarly sized operation in Singapore handles the remainder of Asia.



**BUILT FOR IT.**

Caterpillar Marine Trading (Shanghai) Co., Ltd. is well known in the marine and oil & gas industries as "MaK Asia." MaK Asia is a wholly-owned Caterpillar dealer that specializes in medium-speed engines and systems. Its brands include MaK Marine, CM Petroleum and EMD. The Shanghai headquarters has about 50 employees and serves as a direct sales and service dealer to support customers in the Greater China region. A similarly sized operation in Singapore handles the remainder of Asia.

Caterpillar Marine Trading (Shanghai) Co., Ltd offers the following products and services: engines for marine propulsion allied with gearboxes, drive shafts, and propellers; engines for auxiliary generator sets and DE propulsion; main generator sets for offshore petroleum applications with complete auxiliaries; and a full range of services for MaKTM engines in all aspects of marine applications, from project start-up to product sale and commissioning, from local parts supply and parts logistics, maintenance, workshop and onboard repair services to engine upgrade and customer training.

**Caterpillar Marine Trading (Shanghai) Co., Ltd.**

Address: 25/F, No. 1319 Yan'an West Road, Shanghai,  
China

Postcode: 200050

Tel: (86-21) 6226 2200

Fax: (86-21) 6226 4500

**CATERPILLAR®**  
**卡特彼勒**

The main Kangqiao (in Shanghai) and Shunde (in Guangdong Province) workshops of the company are able to overhaul main engine components such as cylinder heads, pistons, liners, fuel injection pumps, fuel injectors and turbochargers. The service team fully understands the marine and oil & gas industries and the commitment of time and effort it takes to turn around a repair job in

the often tight time window set by a vessel's schedule or the cost of lost production downtime. The company's culture of stability, continuity and strong ownership of customer relationships stems from a blend of long-tenured senior personnel and new employees drafted in to support the growth in MaK-branded engine sales and the greater China user population.



# 卡特彼勒物流 (上海) 有限公司

卡特彼勒物流(上海)有限公司于2005年1月成立,坐落于上海临港新城产业园区,毗邻上海自贸区。公司占地面积8.4万平方米,其中保税及非保税仓储面积达到4.5万平方米。

为你铸就™



2006年2月,卡特彼勒物流(上海)有限公司功能完备、设施齐全、技术先进的现代化备品备件服务平台正式投入运营,主要从事卡特售后服务配件的采购、检验测试、包装及保护处理,仓储、销售及进出口服务。

卡特彼勒物流(上海)有限公司不仅为卡特代理商提供零配件供应和全天候的服务,而且向卡特彼勒其他区域的配件中心供应零件,是卡特全球零件配送服务网络的重要结点。

卡特彼勒物流(上海)有限公司

地址: 上海市浦东新区临港同顺大道500号

邮编: 201308

电话: (86-21) 38281500

传真: (86-21) 38281071

@2015 Caterpillar 版权所有。CAT、CATERPILLAR、“为你铸就”,及相应徽标;“Power Edge”商业外观以及此处使用的企业标识,均为 Caterpillar 商标,未经许可,不得使用。



# Caterpillar Logistics (Shanghai) Co., Ltd.

Set up in January 2005, Caterpillar Logistics (Shanghai) Co., Ltd. is located in Shanghai Lingang Industrial Park, next to the Shanghai Free Trade Zone. It covers an area of 84,000 square meters, including 45,000 square meters of bonded and non-bonded warehouse space.

**BUILT FOR IT.™**



A fully functional, well equipped and modern technologically-advanced parts service platform was put into operation in February 2006 at Caterpillar Logistics (Shanghai) Co., Ltd., covering the businesses from purchasing, testing, packing, storage and sales to import/export services of Caterpillar aftermarket parts. Acting as an important entry point of Caterpillar global parts distribution network, the facility provides parts supply and around-the-clock services to Cat dealers in China, and also serves Cat parts distribution centers in other regions.

## **Caterpillar Logistics (Shanghai) Co., Ltd.**

Address: No. 500 Lingang Tongshun Avenue, Pudong  
New District, Shanghai, China  
Postcode: 201308  
Tel: (86-21) 38281500  
Fax: (86-21) 38281071

©2015 Caterpillar All Rights Reserved. CAT, CATERPILLAR, their respective logos, "Caterpillar Yellow," the "Power Edge" trade dress as well as corporate and product identity used herein, are trademarks of Caterpillar and may not be used without permission.

# 江苏 JIANGSU

# 卡特彼勒（徐州）有限公司

卡特彼勒（徐州）有限公司是卡特彼勒在中国成立的第一家生产型企业，主要生产液压挖掘机产品。1994 年，卡特彼勒（徐州）有限公司落户江苏徐州经济技术开发区。成立至今，卡特彼勒徐州工厂在卡特彼勒中国战略的实施、新产品引进、市场占有率提升以及产品出口等方面发挥了重要作用。



卡特彼勒徐州工厂严格遵循卡特彼勒生产体系，秉承先进企业文化，成为卡特彼勒在中国的重要人才和管理经验输出基地。今天，卡特彼勒在中国的 28 家工厂中，许多高级管理和技术人才都来自徐州工厂。

在“正直、卓越、团队、承诺、可持续性”的卡特彼勒行动价值观的指导下，卡特彼勒徐州工厂打造出一支极富凝聚力的员工队伍。

2011 年 6 月，由卡特彼勒徐州工厂牵头与徐州经济技术开发区合作共同筹建了卡特彼勒徐州供应商工业园，引入中国、日本、美国、德国等国的多家战略供应商合作伙伴。工业园的建立大大缩短了徐州工厂的采购周期，降低了物流及生产成本，提高了卡特彼勒在中国的市场竞争力，是卡特彼勒 2020 战略在中国市场获得成功的重要举措。

经过 20 年的发展，卡特彼勒徐州工厂现已成为卡特彼勒在华的旗舰工厂，在质量、安全、供应链整合、员工凝聚力等方面表现卓越，是中国工程机械行业追求卓越质量和可持续发展的典范，并有望成为卡特彼勒全球最大的挖掘机制造中心。

卡特彼勒（徐州）有限公司

地 址：江苏省徐州市金山桥开发区驮蓝山路19号

邮 编：221004

电 话：(86-516) 87736699

**CATERPILLAR®**  
**卡特彼勒**



## 企业社会责任

卡特彼勒（徐州）有限公司积极履行企业社会责任，关注可持续发展，开展了一系列项目以达到固体废弃物的零排放。卡特彼勒徐州工厂固体废弃物的循环利用率达 92% 以上，所有污水均经过污水站处理，中水回用项目每年可节约新鲜水 10,000 吨。

在社会慈善公益方面，公司从 1995 年起，积极身体力行，参与到各类公益活动中，诸如资助社会福利院生活用品、资助丰县贫困学生、公益林植树等。2001 年公司开始参与致力于特殊教育的徐州彭城培智学校的新校舍筹建，此后，卡特彼勒（徐州）有限公司员工已连续十三年为该校 100 多名学生提供文具和日常必需品方面的捐助。卡特彼勒基金会则自 2011 年起为该校学生提供住宿费、营养餐，并为贫困生提供医疗帮助。



## 大事记



### 1994

- 卡特彼勒（中国）投资有限公司与徐州工程机械集团有限公司合资成立卡特彼勒（徐州）有限公司，成为卡特彼勒在中国的第一家工厂。

### 2002

- 卡特彼勒徐州第 5,000 台液压挖掘机下线，并捐赠给 2008 年北京奥组委。

### 2006

- 荣获国家税务总局“2006 年度中国纳税百强”称号。

### 2007

- 基于员工意见调查结果，获得“员工凝聚力董事长认可奖”。

- 荣获中国外商投资企业协会“2005 - 2006 年度优秀外商投资企业”称号及“履行社会责任贡献突出奖”。

### 2010

- 新装配厂房正式投产，占地 39,000m<sup>2</sup>，拥有先进的装配、检验和喷漆生产线。
- 大型挖掘机厂房奠基，占地 120,000m<sup>2</sup>，用于生产 336-390 系列液压挖掘机。

- 卡特彼勒（中国）投资有限公司与徐州工程机械集团有限公司签署股权转让协议，卡特彼勒（徐州）有限公司成为卡特彼勒全资子公司。

### 2011

- 荣获集团总部“战略改善总裁奖”。

### 2012

- 获得海关总署评定的 AA 级认证。

### 2013

- 荣获“2013 年卡特彼勒卓越运营主席奖”。

### 2014

- 20 周年庆典暨大型挖掘机厂正式投产。
- 荣获全国总工会“全国五一劳动奖状”。

# Caterpillar (Xuzhou) Ltd.

Caterpillar (Xuzhou) Ltd. ("Caterpillar Xuzhou") was the first manufacturing facility Caterpillar established in China, mainly producing hydraulic excavators. Opening its doors in 1994, Caterpillar Xuzhou was originally located in Xuzhou Economic & Technological Development Zone, Jiangsu Province. Caterpillar Xuzhou plays a significant role in implementing Caterpillar's China strategy, including new product introduction, improving local market share and exporting products.



Following Caterpillar Production System (CPS) principles and emulating Caterpillar's Values in Action, Caterpillar Xuzhou has become an important place where local talent is trained and prepared to take leadership roles within the corporation. Many senior management and engineering leaders in place today across Caterpillar's 28 manufacturing facilities began their careers at Caterpillar Xuzhou.

In June 2011, jointly with the Xuzhou Economic & Technological Development Zone committee, Caterpillar Xuzhou built the Caterpillar Xuzhou Supplier Industrial Park, bringing many strategic supply partners from China, Japan, the United States and Germany to the Zone. The industrial park greatly shortens Caterpillar Xuzhou's purchasing cycles, reduces logistics and production costs, and improves Caterpillar's market competitiveness in China. This is regarded as an important milestone in the success of Caterpillar's 2020 Strategy in China.

Over the past 20 years, Caterpillar Xuzhou has grown into Caterpillar's flagship manufacturing facility in China, representing operational excellence in quality, safety, supply chain integration and employee engagement. Caterpillar Xuzhou now is regarded as a model for China's construction machinery industry and is expected to become Caterpillar's largest global excavator manufacturing center.

## Caterpillar (Xuzhou) Ltd.

Address: No. 19 Tuolanshan Road, Jinshangqiao  
Development Zone, Xuzhou, Jiangsu Province, China  
Postcode: 221004  
Tel: (86-516) 87736699

**CATERPILLAR®**  
**卡特彼勒**

## Corporate Social Responsibility

Caterpillar Xuzhou takes corporate social responsibility seriously with a strong focus on environmental sustainability. Employing a series of processes to ensure zero discharge of solid waste, the facility also recycles more than 92 percent of solid waste, and all waste water is processed at water treatment stations, conserving more than 10,000 tons of fresh water each year.

Since 1995, Caterpillar Xuzhou has participated in community service activities, including providing daily necessities to social welfare houses, funding impoverished students in Feng Town and participating in charity forest projects. In 2001, Caterpillar Xuzhou supported the planning and construction of a new school building for Xuzhou Pengcheng Special Education School and each year since then, employees of Caterpillar Xuzhou have continuously donated school supplies and other items to the students. Since 2011, Caterpillar Foundation has sponsored students of Xuzhou Pengcheng Special Education School for their room and board and also provided medical assistance to impoverished students.



## Milestones



### 1994

- Caterpillar (China) Investment Co., Ltd. and Xuzhou Construction Machinery Group jointly established Caterpillar (Xuzhou) Ltd., which is Caterpillar's first facility in China.

### 2002

- 5,000th hydraulic excavator rolled off the assembly line and Caterpillar Xuzhou donated that machine to the Beijing Organizing Committee of the XXIX Olympiad.

### 2006

- Named one of the Top 100 Companies for Tax Contribution in 2006 by the State Administration of Taxation.

### 2007

- Awarded Caterpillar Chairman's Award for Employee Engagement, based on employee opinion survey results.

- Selected as a 2005-2006 Distinguished Foreign Invested Enterprise and received the Outstanding Contribution Award in Social Responsibility from the China Association of Foreign Invested Enterprises.

### 2010

- Opened new assembly workshop with an area of 39,000m<sup>2</sup>, equipped with advanced assembly, quality testing and spray paint production lines.
- Held groundbreaking for the large hydraulic excavators facility, covering an area of 120,000 m<sup>2</sup>, capable of manufacturing 336-390 series hydraulic excavators.
- Became a wholly-owned subsidiary of Caterpillar Inc. after the execution of an equity transfer agreement between Caterpillar (China) Investment Co., Ltd. and Xuzhou Construction Machinery Group.

### 2011

- Awarded Caterpillar Chairman's Strategic Improvement Award.

### 2012

- Certified as a AA-Class Company by the General Administration of Customs.

### 2013

- Awarded the 2013 Caterpillar Chairman's Award for Operations Excellenc.

### 2014

- Celebrated 20th anniversary and opened the large hydraulic excavator facility.
- Won 2014 National Labor Award issued by All-China Federation of Trade Unions.



# 卡特彼勒路面机械 (徐州) 有限公司

卡特彼勒路面机械(徐州)有限公司于2000年3月在徐州投资成立,目前隶属于卡特彼勒土方设备事业部。



为你铸就

卡特彼勒路面机械(徐州)有限公司厂房建筑面积达22,306.5平方米,现有员工270人,主要生产土壤压路机、沥青压路机、轮胎压路机和摊铺机。

卡特彼勒路面机械(徐州)有限公司的产品以出口为主,产品畅销亚非拉美以及中东等地区。2012年以来,为了配合与支持卡特勒全球路面机械的统一战略部署,卡特彼勒路面机械(徐州)有限公司陆续开始了几十种机型的压路机新产品引进项目,并在2013年下半年陆续投入生产,以增强卡特彼勒路面机械在全球市场的竞争力。

卡特彼勒路面机械(徐州)有限公司

地址:江苏省徐州市金山桥开发区洞山路16号

邮编:221004

电话:(86-516) 8773 6688

**CATERPILLAR®**  
卡特彼勒

卡特彼勒路面机械（徐州）有限公司在其他方面也表现卓越，产品的质量也始终保持着行业领先的地位。



©2015 Caterpillar 版权所有。CAT、CATERPILLAR、“为你铸就”，及相应徽标、“Power Edge”商业外观以及此处使用的企业标识，均为 Caterpillar 商标，未经许可，不得使用。

卡特彼勒路面机械（徐州）有限公司

# Caterpillar Paving Products Xuzhou Ltd.

Founded in March 2000, Caterpillar Paving Products Xuzhou Ltd is part of Caterpillar Earthmoving Division.



The Caterpillar Paving Products Xuzhou Ltd facility covers an area of 22,306.5 m<sup>2</sup> and employs 270 people. Its main products are soil compactors, asphalt compactors, pneumatic compactors and pavers.

Caterpillar Paving Products Xuzhou Ltd.'s produces products mainly for overseas markets in Asia Pacific, Africa, LatinAmerica and the Middle East.

In order to align with Caterpillar's global paving footprint strategy, Caterpillar Paving Products Xuzhou Ltd has introduced scores of new models of compactors since 2012. These new models, put into production at the end of 2013, have enhanced the competitiveness of Caterpillar paving products worldwide.

**Caterpillar Paving Products Xuzhou Ltd.**

Address: No.5 Jingshan Road, Jingshanqiao Development Zone, Xuzhou, Jiangsu Province, China  
Postcode: 221004  
Tel: (86-516) 87736968

**CATERPILLAR®**  
**卡特彼勒**



In addition, Caterpillar Paving Products Xuzhou Ltd has made excellent achievements in many other areas such as safety and and it maintains a leading position in the paving industry for high quality products.



©2015 Caterpillar All Rights Reserved. CAT, CATERPILLAR, their respective logos, "Caterpillar Yellow," the "Power Edge" trade dress as well as corporate and product identity used herein, are trademarks of Caterpillar and may not be used without permission.

**Caterpillar Paving Products Xuzhou Ltd.**

# 卡特彼勒底盘（徐州）有限公司

卡特彼勒底盘（徐州）有限公司成立于 2011 年 6 月，工厂占地约 6.7 万 m<sup>2</sup>，主要为卡特彼勒（徐州）有限公司以及 OEM 客户生产底盘产品和零部件。



为你铸就。

卡特彼勒底盘（徐州）有限公司

地 址：江苏省徐州市经济开发区金川路 8 号

邮 编：221000

**CATERPILLAR®**  
卡特彼勒





卡特彼勒底盘（徐州）有限公司积极履行企业社会责任，关注可持续发展，开展了一系列可循环利用项目。目前生产废液均由污水处理站处理并执行国家Ⅰ级排放标准。切削液等生产辅助材料实现回收循环使用。冷凝水回收项目每年回收、利用冷凝水近 1,000 吨。另外，从 2013 年开始，卡特彼勒底盘（徐州）有限公司每年都积极参与“卡特彼勒基金会公益林活动”。

自公司成立以来，卡特彼勒底盘（徐州）有限公司员工每年为徐州彭城培智学校学生提供文具和日常必需品方面的捐助。卡特彼勒基金会则自 2011 年起为该校学生提供住宿费、营养餐，并为贫困生提供医疗帮助。



# Caterpillar Undercarriage (Xuzhou) Co., Ltd.

Established in June 2011, the Caterpillar Undercarriage (Xuzhou) Co., Ltd. Facility has an area of 67,000m<sup>2</sup> and produces undercarriage products and components for Caterpillar (Xuzhou) Ltd. and OEM customers.



**BUILT FOR IT.**

Caterpillar Undercarriage (Xuzhou) Co., Ltd.

Address: No. 8 Jinchuan Road, Xuzhou Economic and Technological  
Development Zone, Xuzhou, Jiangsu Province, China  
Postcode: 221000

**CATERPILLAR®**  
卡特彼勒



Caterpillar Undercarriage (Xuzhou) Co., Ltd. is committed to corporate social responsibility with a focus on sustainability and has launched a series of recycling projects. Production waste liquid is disposed of using a sewage treatment station, in strict compliance with the national Class-I waste water discharge standard. Auxiliary production materials, including cutting coolant, is properly recycled. Nearly 1,000 tons of condensate is recycled annually through the condensate recycling project. In addition, Caterpillar Undercarriage (Xuzhou) Co., Ltd. has participated in the Caterpillar Foundation Charity Forest project annually since 2013.

Since the establishment of Caterpillar Undercarriage (Xuzhou) Co., Ltd., employees of the company have donated annually to support students of Pengcheng Special Education School including providing supplies. Since 2011, Caterpillar Foundation has sponsored students of Xuzhou Pengcheng Special Education School for their room and board and also provided medical assistance to impoverished students.



# 卡特彼勒（中国） 机械部件有限公司

卡特彼勒（中国）机械部件有限公司成立于 2005 年，是卡特彼勒先进部件及系统事业部在中国的第一家全生产配套零部件的企业，作为其长期战略计划的一部分支持卡特彼勒在中国及全球业务的增长。

卡特彼勒（中国）机械部件有限公司坐落于江苏省无锡市新区，占地 19 公顷，制造区域面积达 101,000 平方米，员工总数约 1,500 人。公司拥有三个独立工厂，设计和生产液压、驾驶舱和传动系统部件。

液压零部件工厂主要为中国及亚太区的整机生产厂供应高质量的液压零部件，包括液压阀、液压泵、液压缸和胶管总成，同时少量供给北美、南美和欧洲的整机厂和全球售后服务网络。液压缸产品供货给卡特彼勒全球平地机、装载机和大型挖掘机客户。



为你铸就。

驾驶舱工厂于 2007 年开始生产挖掘机、装载机、平地机和履带式推土机的驾驶舱，是卡特彼勒全球第一个涵盖焊接、涂装和总装测试的工厂，以高质量低成本的产品服务卡特彼勒全球的总机厂和 OEM 客户，涂装产品质量已达到汽车业水准。

传动和驱动系统工厂是从 2011 年开始动工新建，于 2012 年年底开始全新的设备安装和调试。主要生产履带式推土机、中型装载机和平地机的变速箱、轮式装载机和地下采矿机械的车桥、以及履带式推土机的终驱。

卡特彼勒（中国）机械部件有限公司以安全为首要目标，致力于创建零伤害的工作环境，并保证将高质量的产品及时交到客户手中。

卡特彼勒（中国）机械部件有限公司  
地 址：江苏省无锡市国家高新技术产业  
开发区新荣路 16 号  
邮 编：214028  
电 话：(86-510) 8855 7999  
传 真：(86-510) 8815 3432

**CATERPILLAR®**  
**卡特彼勒**



## 企业社会责任

卡特彼勒（中国）机械部件有限公司积极履行企业社会责任。在社会慈善公益方面，自 2010 年起，公司援建江苏省宿迁市泗阳县杨圩希望小学项目，先后为该学校筹建新校舍、跑道建设、电脑房等，100 多名员工自发与希望小学学生结成一对一帮助小组，将该项目做到了可持续化。公司还先后参与无锡市南长区培智学校项目、卡特彼勒基金会公益林植树活动和无锡新区贫困生援助项目等。



## 大事记



**2005.9**

| 卡特彼勒液压元件（无锡）有限公司成立。

**2006.6**

| 成功交付了第一批胶管。

**2007.1**

| 正式更名为卡特彼勒（中国）机械部件有限公司。

**2007.6**

| 第一台驾驶舱成功交付。

**2007.7**

| 第一批液压阀产品发运。

**2008.12**

| 荣获无锡市人民政府新区管理委员会颁发的“履行社会责任先进企业”称号。



**2009.1**

| 荣获无锡新区“企业人力资源管理奖”。

**2009.3**

| 第一批齿轮泵成功发运。

**2010.3**

| 被无锡市安全生产监督管理局确认为“无锡市安全生产 A 类企业”。

**2011.9.9**

| 液压缸和底盘传动系统工厂奠基。

**2012.1**

| 荣获无锡市人民政府新区管理委员会颁发的“2011 年度优秀企业奖”。



**2014.4**

| 荣获无锡市经济和信息化委员会颁发的 2013 年度“依法管理诚信经营示范企业创建工作先进单位”。

**2014.10.30**

| 连续 1,000,000 小时无可记录伤害事故。

**2015.12**

| 荣获江苏省唯一厂务公开民主管理先进单位。

**2016.2**

| 驾驶舱工厂被授予 2015 年度“杰出运营总裁奖”。

# Caterpillar (China) Machinery Components, Co., Ltd

Established in 2005, Caterpillar (China) Machinery Components Co. Ltd. is the first Caterpillar wholly owned company of supporting components under Caterpillar Advanced Components and System Division, as a part of its long-term strategic plan to support Caterpillar business growth in China and globally.

Located in the Wuxi New District, Jiangsu Province, Caterpillar (China) Machinery Components Co. Ltd. covers a land area of 19 hectares and a manufacturing space of 101,000 m<sup>2</sup>. The company has 1,500 employees in total. The company has three independent plants, designing and manufacturing hydraulic components, operator stations and powertrain components respectively.

The hydraulic component plant mainly provides high-quality hydraulic components, including hydraulic valves, hydraulic pumps, hydraulic cylinders and hose assemblies, to complete machine manufacturers in China and Asia-Pacific region and exports a small part of its products to complete machine manufacturers in South Africa, North America and Europe as well as global aftersales service network. Its hydraulic cylinders are sold to Caterpillar consumers for motor graders, loaders and large excavators worldwide.



The operator station plant started to produce operator stations used for excavators, loaders, motor graders and track-type tractors. As the first plant of Caterpillar worldwide that covers welding, coating and assembly test, the plant serves Caterpillar global complete machine manufacturers and OEM consumers with high-quality, low-cost products. The coating quality has reached the car industry standard.

The powertrain plant was built in 2011, and began brand-new equipment installation and commissioning at the end of 2012. The plant mainly produces gearbox for track-type tractors, medium loaders and motor graders; axles for wheel loaders and underground mining machinery and final powertrain system for track-type tractors.

Taking safety as the priority, Caterpillar (China) Machinery Components Co. Ltd. aims to build a zero-injury work environment and deliver high quality products to customers in a timely manner.

## Caterpillar (China) Machinery Components, Co., Ltd

Address: No.16 Xinrong Road, Wuxi Hi-tech Industrial  
Development Zone, Wuxi, China  
Postcode: 214028  
Tel: (86-510) 8855 7999  
Fax: (86-510) 8815 3432

**CATERPILLAR®**  
**卡特彼勒**

## Corporate Social Responsibility

Caterpillar (China) Machinery Components Co. Ltd. proactively fulfills its corporate social responsibility. In respect to social charity, the company has donated to Yangwei Hope Primary School in Siyang County, Suqian, Jiangsu Province since 2010. The company has helped build new school buildings, a playground running track and computer rooms. More than 100 employees have formed one-on-one support teams with students from the school to make the project sustainable. Caterpillar (China) Machinery Components Co. Ltd. also supports special education schools in Nanchang District, Wuxi, as well as the Caterpillar Foundation Charity Forest tree-planting activities and a poverty-stricken students aid program in Wuxi New District.



## Milestones



**2005.9**

| Caterpillar Hydraulics (Wuxi) Co., Ltd. was established.

**2006.6**

| Shipped the first batch of hose assemblies.

**2007.1**

| Officially renamed as Caterpillar (China) Machinery Components Co. Ltd.

**2007.6**

| Delivered the first operator station

**2007.7**

| Shipped the first batch of hydraulic valves.



**2008.12**

| Honored as the Corporate Social Responsibility Model Enterprise by Wuxi New District Administrative Commission.

**2009.1**

| Awarded the Enterprise Human Resource Management Award by Wuxi New District.

**2009.3**

| Shipped the first batch of gear pumps

**2010.3**

| Selected as Enterprise with A-level Work Safety in Wuxi by Wuxi Municipal Administration of Work Safety.

**2011.9.9**

| Ground-breaking ceremony of hydraulic cylinder and powertrain plant.



**2012.1**

| Awarded the 2011 Excellent Enterprise Award by Wuxi New District Administrative Commission.

**2014.4**

| Honored as Model Enterprise for Management by Law and Good-Faith Operation by Wuxi Economic and Information Commission.

**2014.10.30**

| 1 million hours without recordable injury.

**2015.12**

| Only company in Jiangsu that is honored for enforcing facility administration publication and democratic management.

**2016.2**

| The operator station plant won the Chairman's Award of Operations Excellence Award – Components/Power Systems 250+ Employees






# 卡特彼勒无锡 发动机工业园介绍

 **Perkins®**

THE HEART OF EVERY GREAT MACHINE



## 卡特彼勒无锡发动机工业园

- 卡特彼勒无锡发动机工业园是卡特彼勒品牌和珀金斯品牌在中国的旗舰基地,代表着珀金斯在柴油发动机制造业累积近八十年的经验。以其对质量的专注和能够提供解决方案满足客户严苛需求,珀金斯成为国际主要原始设备制造商青睐的供应商。
- 卡特彼勒无锡发动机工业园严格遵循卡特彼勒生产体系,秉承先进企业文化。在“正直、卓越、团队合作、承诺、可持续性”的卡特彼勒行动价值观的指导下,工业园内450多名员工同心协力,为完成共同目标而努力。

## 小型发动机(无锡珀金斯芝浦发动机有限公司)

无锡珀金斯芝浦发动机有限公司(“无锡珀金斯芝浦”)于2007年12月由卡特彼勒与其小型发动机的长期合作伙伴日本IHI芝浦株式会社合资兴建。无锡珀金斯芝浦是卡特彼勒无锡发动机工业园的第一个项目,占地面积29,083平方米,建筑面积10,242平方米。无锡珀金斯芝浦于2008年11月27日开始投产。

公司地址: 无锡新区新畅南路10号  
邮编: 214142  
电话: (86-510) 85372700

无锡珀金斯芝浦公司生产Cat®(卡特)C1.1, C1.5, C2.2和珀金斯400系列发动机,功率范围从11马力到68马力,主要销售给主机制造厂商,用于小型工程机械、农业、土方、材料运送机械以及发电机组。



## 中型发动机（无锡珀金斯动力系统科技有限公司）

无锡珀金斯动力系统科技有限公司（“无锡珀金斯动力”）成立于2009年3月，是卡特彼勒的全资子公司，也是卡特彼勒无锡发动机工业园的第二个项目，占地面积135,000平方米。2010年7月完成了首批订单发动机的交付发运。

公司地址：无锡新区新畅南路8号  
邮编：214142  
电话：（86-510）85372800

无锡珀金斯动力公司主要生产Cat C4.4, C7.1和珀金斯1100系列发动机，功率范围从75马力到350马力，被广泛地销售给农业以及其他工业领域的原始设备制造商，同时也应用在卡特彼勒的核心施工设备和发电机组等。

2015年10月份，其1100系列机械发动机顺利通过VECC认证，成为国内第一家通过国家三阶段排放标准的非道路机械式发动机制造商。这也是卡特彼勒无锡发动机工业园前进道路上一个里程碑式的时刻。







# 卡特彼勒无锡发动机 工业园社会责任

卡特彼勒无锡发动机工业园积极履行企业社会责任, 关注可持续发展, 开展了一系列项目使固体废弃物的回收率达到98%。2010年4月, 无锡珀金斯芝浦发动机工厂更是获得美国LEED绿色建筑银级认证。

在社会公益方面, 卡特彼勒无锡发动机工业园积极组织员工开展形式多样的慈善活动。2008年组织员工为汶川地震捐款。2010年给福利院孤寡老人送温暖。2013年4月,

组织志愿者为无锡南湖中学捐献图书并建立了图书角, 丰富了学生们的课余生活, 2014年5月份, 又向该学校的学生捐赠并分发了书包, 文具等用品。此外, 2014年5月份还参加“卡特彼勒基金会公益林”无锡植树活动。2015年8月份, 卡特彼勒无锡发动机工业园参加了“藻来早去、绿色太湖”蓝藻清理环保公益活动, 不仅实践了卡特彼勒支持可持续发展的行动价值观, 也体现了卡特彼勒对当地社区的关怀。



## 无锡珀金斯芝浦发动机有限公司大事件

2008.01.31

卡特彼勒无锡发动机工业园奠基仪式

2008.11.27

无锡珀金斯芝浦发动机有限公司开业典礼

2010.02.10

荣获2009无锡新区“人力资源企业管理奖”

2010.04

获得由美国绿色建筑协会颁发的绿色能源与环境设计先锋奖 (LEED) 银奖

2011.01

荣获无锡新区“履行社会责任先进企业”和“优秀企业志愿者团队”称号

2011.08.14

顺利达到无可记录工伤事故1,000天

2012

荣获“卡特彼勒董事长质量奖”

2013

荣获“卡特彼勒环境卓越奖”

2013.03.18

成为安全生产标准化三级企业(机械)

2013.10.31

热烈庆祝第50,000台发动机下线

2014.05.14

顺利达到无可记录工伤事故2,000天

2015.10.14

热烈庆祝合资企业成立20周年





## 无锡珀金斯动力系统科技有限公司大事件

2010.06.30

无锡珀金斯动力系统科技有限公司开业典礼

2010.07

首批发动机订单顺利交付

2011.01

荣获无锡新区“履行社会责任先进企业”和“优秀企业志愿者团队”称号

2011.08.03

100系列6缸发动机装配线投产

2012

荣获行业媒体慧聪工程机械网评选的中国工程机械配套件行业“外资品牌贡献奖”

2012

荣获“卡特彼勒董事长质量奖”

2013.01

荣获无锡新区“和谐社会发展奖”

2014.01

荣获无锡市人力资源和社会保障局颁发的“劳动保障诚信企业”称号

2015.10

1100系列机械发动机顺利通过VECC认证,成为国内第一家通过国家三阶段排放标准的非道路机械式发动机制造商

2016.01


荣获无锡市新吴区“优秀企业”



# Caterpillar IPSD Wuxi



THE HEART OF EVERY GREAT MACHINE



## Caterpillar IPSD Wuxi Engine Campus

- **Caterpillar IPSD Wuxi Engine Campus is the flagship manufacturing base for Cat and Perkins branded engines in China, representing the brand's 80-year history of diesel engines manufacturing excellence. With good quality and solutions to meet strict requirements of customers, Perkins has become a supplier favored by major international original equipment manufacturers (OEMs).**
- **Caterpillar IPSD Wuxi Engine Campus follows Caterpillar Production System and adheres to the corporate values – Integrity, Excellence, Teamwork, Commitment and Sustainability – around 450 employees at the campus work together toward the same goal.**

## Small Engines - Perkins Shibaura Engines (Wuxi) Co., Ltd

Established in December 2007, Perkins Shibaura Engines (Wuxi) Co. Ltd. is a joint venture between Caterpillar and its long-term, small-engine partner IHI Shibaura Machinery Co. Ltd. It is the first project in Caterpillar IPSD Wuxi Engine Campus. The facility has a land area of 29,083 square meters and a building area of 10,242 square meters. It began operation on November 27, 2008.

The facility produces Cat C1.1, C1.5, C2.2 and Perkins 400 series engines

ranging from 11Hp to 68Hp, which are sold primarily to OEMs for the application of small construction machinery, agricultural machinery, earthmoving machinery, material delivery machinery and generator sets.

Address: No.10 Xinchang Nanlu,  
Wuxi, Jiangsu Province, China  
Postcode: 214142  
Phone numbers: +86-510-85372700





## Medium Engines - Perkins Power Systems Technology (Wuxi) Co., Ltd.

Established in March 2009, Perkins Power Systems Technology (Wuxi) Co. Ltd. is a Caterpillar wholly owned company and the second project in Caterpillar IPSD Wuxi Engine Campus. The facility has a land area of 135,000 square meters. Perkins Power shipped its first batch of engines in July 2010.

The facility mainly produces CAT C4.4, C7.1 and Perkins 1100 series engines ranging from 75Hp to 350Hp, which are sold to OEMs in agriculture and other industrial sectors as well as being used in Caterpillar core construction equipment and generator sets.

In October 2015, the facility became the first mechanical

engine manufacturer in China to pass China Stage III non-road engine emission certification, which marks a milestone in the development of Caterpillar IPSD Wuxi Engine Campus.

Address: No.8 Xinchang Nanlu,  
Wuxi, Jiangsu Province, China  
Postcode: 214142  
Phone numbers: (86-510) 85372800







# Corporate Social Responsibility of Caterpillar IPSD Wuxi

Caterpillar IPSD Wuxi has proactively fulfilled its corporate social responsibility with a focus on sustainability. A series of measures have been taken to ensure the recycling of solid waste reach 98 percent. Perkins Shibaura has obtained the Leadership in Energy and Environmental Design (LEED) New Construction Silver Certification from the U.S. Green Building Council in April 2010.

In terms of social charity, Caterpillar IPSD Wuxi organizes a variety of charity activities. Employees donated for Wenchuan earthquake relief in 2008 and took care of the elderly at charity houses in 2010. Caterpillar IPSD Wuxi

organized volunteers to donate books and build a book corner for Nanhu Middle School in April 2013, which enriched students' extracurricular life. In May 2014, Caterpillar IPSD Wuxi donated and distributed schoolbags and school supplies to students at Nanhu Middle School. Moreover, it also participated in the Caterpillar Foundation Charity Forest tree-planting activity in Wuxi in May 2014.

In 2015, IPSD Wuxi participated in blue-green algae cleanup on Taihu Lake, which not only showed that Caterpillar adheres to the corporate value of, sustainability, and the company cares about local community.





## Milestone of Perkins Shibaura Engines (Wuxi) Co., Ltd

2008.01.31

ground-breaking ceremony of Caterpillar Wuxi Engine Campus

2008.11.27

opening ceremony of Perkins Shibaura Engines (Wuxi) Co. Ltd

2010.02.10

awarded the 2009 Enterprise Human Resources Management Award by Wuxi New District

2010.04

obtained the LEED Silver Certification from the U.S. Green Building Council

2011.01

honored as the Social Responsibility Model Enterprise and Excellent Corporate Volunteer Team by Wuxi New District

2011.08.14

celebrated 1,000 days without recordable injuries

2012

awarded the Caterpillar Chairman's Award for Operations Excellence

2013

awarded the Caterpillar Chairman's Environmental Excellence Award

2013.03.18

enterprise with Tier 3 work safety standardization (machinery)

2013.10.31

the 50,000th engine rolled off production line

2014.05.14

celebrated 2,000 days without recordable injuries

2015.10.14

celebrated JV Partnership 20th anniversary



## Milestone of Perkins Power Systems Technology (Wuxi) Co., Ltd.

2010.06.30

opening ceremony of Perkins Power Systems Technology (Wuxi) Co. Ltd

2010.07

shipped first batch of engines

2011.01

awarded as the Social Responsibility Model Enterprise and Excellent Corporate Volunteer Team by Wuxi New District

2011.08.03

new production line for 6-cylinder engines began operation

2012

awarded the Foreign Brand Contribution Award in China's construction machinery accessories sector by industry media hc360.com

2012

awarded Caterpillar Chairman's Award for Operations Excellence

2013.01

awarded the Harmonious Social Development Award by Wuxi New District

2014.01

honored as the Labor and Social Security Integrity Enterprise by Wuxi Municipal Bureau of Human Resources and Social Security

2015.10

1100-series mechanical engines passed China VECC Stage III certification, making IPSD Wuxi the first mechanical engine manufacturer in China to pass China Stage III non-road engine emission certification

2016.01

won the prize of "Excellent Enterprise" by Xinwu District

# 卡特彼勒技术研发(中国)有限公司

卡特彼勒技术研发(中国)有限公司(“卡特彼勒中国研发中心”)成立于2005年,总部位于江苏省无锡市,在无锡、青岛、天津和南通设有分支机构。其中,总部占地面积为31,290m<sup>2</sup>,建筑面积25,000m<sup>2</sup>。

卡特彼勒中国研发中心使命是提供具有成本竞争力的世界水平的产品研发和知识产权管理,支持卡特彼勒在中国和其它成长市场中实施其战略。卡特彼勒中国研发中心服务于卡特彼勒在中国的生产设施和供应基地,使卡特彼勒更接近客户,充分利用区域工程技术人才,开发超越客户期望的市场领先产品。

卡特彼勒中国研发中心是一个多功能的技术研发中心,也是卡特彼勒在中国研发资源的中枢。作为卡特彼勒全球研发网络的重要组成部分,卡特彼勒中国研发中心利用自身及全球研发资源,遵循卡特彼勒的研发过程和产品开发的标准,并考虑中国和其它成长市场的特殊要求,为在中国及其它成长市场的卡特彼勒各分部提供产品和工艺开发、产品验证、本地化和技术培训。卡特彼勒中国研发中心还为在中国及其它成长市场提供知识产权管理、人力资源和IT支持等共享服务。



自2009年12月以来,通过四期的建设,卡特彼勒中国研发中心已经成为卡特彼勒全球第二大综合性研发中心,拥有超过30个各类先进实验室和培训设施。设计和研发范围包括中、大型轮式装载机、平地机、履带式推土机、液压挖掘机等整机设计;几十匹马力到3,500匹马力的柴油机以及燃油系统、传动系统、液压系统、电子电气零部件和系统、材料、冷却和后处理等系统的设计、测试和验证;并拥有驾驶舱翻滚保护实验以及系统集成验证能力。此外,卡特彼勒中国研发中心拥有全国最先进、也是工程机械行业首个虚拟仿真实验室。目前,卡特彼勒中国研发中心的工程技术和支持人员近900名。

人才是卡特彼勒非常重要的财富,更是研发中心的核心竞争力。为此,卡特彼勒中国研发中心每年设计和开发大量工程技术类课程用于员工培训,注重员工的技术素质能力的发展,并帮其实现职业目标。

卡特彼勒中国研发中心还专设“领导力和技术发展项目”,给本科以及硕士研究生以上的应届毕业生设计了一至三年的轮岗学习培训计划,其中包含业务培训、轮岗培训、领导力培训、企业文化培训以及海外培训等。该项目旨在为培养制造和工程领域将来的领导者和技术专家奠定基础。至今已经有近100名学员顺利从这个项目毕业,在各研发团队的岗位上发挥重要作用。

卡特彼勒技术研发(中国)有限公司  
地址:江苏省无锡高新技术开发区新庆  
南路5号  
邮编:214028  
电话:(86-510)8537 9999

**CATERPILLAR®**  
**卡特彼勒**



# 企业社会责任

卡特彼勒中国研发中心还积极投身于公益事业。

卡特彼勒中国研发中心于 2012 年起连续三年在无锡市的江南大学设立“卡特彼勒奖助学金”，至今已有 40 位青年才俊为此受益；同时，卡特彼勒中国研发中心赞助多家中学参加由全球知名的非盈利性机构 FIRST 发起的系列科技挑战赛，并为参赛学生提供技术指导。

在汶川和雅安地震发生后，卡特彼勒中国研发中心的员工纷纷慷慨解囊，奉献爱心；除此之外，卡特彼勒中国研发中心还成立志愿者机构，员工们积极参与众多公益项目，包括长期对口帮助无锡洛社民工子弟学校、每年卡特彼勒基金会公益林的建设、福利院孤老送温暖活动以及支持中学生青少年科技节、环境保护活动和校园讲座。

## 大事记



### 2005.1

| 卡特彼勒技术研发（中国）有限公司成立。

### 2005.6

| 卡特彼勒技术研发（中国）有限公司青岛分公司成立。

### 2007.8

| 卡特彼勒技术研发（中国）有限公司天津分公司成立。

### 2008.6

| 卡特彼勒技术研发（中国）有限公司无锡分公司成立。

### 2009.12

| 无锡研发中心一期项目投入使用。

### 2010

| 获得美国绿色建筑协会对节能环保领先设计评估体系新建筑类别金牌认证（LEED-NC）。

### 2011.5

| 无锡研发中心二期项目投入使用。

### 2011.11

| 卡特彼勒技术研发（中国）有限公司总部迁至无锡。

### 2012

| 被认定为“技术先进型服务企业”。

| 获得无锡新区管委会颁发的“无锡新区创新创业奖”。

| 被江苏省政府评为“跨国公司在江苏省功能性机构”。

| 被江苏省政府评为“江苏省省级外资研发机构”。

### 2012.6

| 无锡研发中心三期项目投入使用。

### 2013

| 获得无锡市政府颁发的“无锡市外包发展贡献奖”。

| 获得卡特彼勒“可持续发展董事会主席奖”。

| 荣获《环球科学》颁发的“中国十大最具影响力研发中心”称号。

### 2013.11

| 无锡研发中心四期项目投入使用。

### 2014

| 荣获无锡新区管委会授予的“无锡新区优秀企业”称号。

| 荣获中国国际投资促进协会颁发的“中国服务外包领军企业 20 强”称号。

| 再次被认定为“技术先进型服务企业”。

| 多个实验室获中国合格评定国家认可委员会（CNAS）认证（ISO 17025）。

# Caterpillar R&D Center (China) Co., Ltd

Established in 2005, Caterpillar R&D Center (China) Co., Ltd. (Caterpillar China R&D Center) is headquartered in Wuxi, Jiangsu Province and has branches in Wuxi, Qingdao, Tianjin and Nantong. The headquarters has a land area of 31,290 square meters and a construction area of 25,000 square meters.

The Caterpillar China R&D Center aims to provide cost-competitive, world-class research and development and intellectual property management services to support the implementation and execution of Caterpillar's strategies in China and other growth markets. It supports Caterpillar's manufacturing facilities and supplier bases in the region, allowing Caterpillar to get closer to customers and take advantage of regional engineering talents to develop market-leading products beyond customers' expectations.

Caterpillar China R&D Center is a multifunctional research and design (R&D) center and the hub of Caterpillar's R&D resources in China. As an integral part of Caterpillar's global R&D network, Caterpillar China R&D Center leverages its own and Caterpillar's global R&D resources and follows Caterpillar's R&D processes and product development standards to provide product and process development, product validation, localization and technological training based on the unique requirements of China and other growth markets. The center also offers shared services such as intellectual property management, human resource functions and IT support to Caterpillar facilities in China and other growth markets.



Since December 2009, after building of four phases, Caterpillar China R&D has become the second largest comprehensive R&D center of Caterpillar worldwide, which boasts more than 30 various state-of-the-art laboratories and training facilities. Caterpillar China R&D center designs middle and large wheel loaders, motor graders, track-type tractors and hydraulic excavators, it designs, tests and validates diesel engines ranging from a few dozen horse power to 3,500 horse power, fuel systems, drivetrains, transmission systems, hydraulic systems, electrical components, systems and materials as well as cooling and after-treatment systems. It is also able to conduct operation station protection tests and machine integration validation. Caterpillar China R&D Center owns China's most advanced virtual reality lab, which is also the first in China's construction machinery industry. The R&D center has around 900 employees, including engineering technicians and support staff.

Talent is a very important asset to Caterpillar and one of the core competitive advantages of the R&D center. Caterpillar China R&D Center designs and develops various engineering and technical training programs to help young talents grow their technical capabilities and strive for their career excellence every year.

Caterpillar China R&D Center has introduced a Leadership & Technical Development Program to provide one to three years of rotational training for new graduates, including business training, on-job training, leadership training, cultural training and overseas training. The program aims to lay the foundation for cultivating future leaders and technical experts in the manufacturing and engineering sectors. So far, around 100 trainees have graduated from this program to play important roles in their R&D positions.

## Caterpillar R&D Center (China) Co., Ltd

Address: No. 5 Xinqing South Road, Wuxi Hi-tech Industrial Development Zone, Wuxi, Jiangsu Province, China  
Postcode: 214028  
Tel: (86-510) 85379999

**CATERPILLAR®**  
**卡特彼勒**

## Corporate social responsibility

Caterpillar China R&D Center also actively engages in social responsibility activities.

Caterpillar China R&D Center has established a Caterpillar scholarship at Jiangnan University, Wuxi for three consecutive years since 2012, and 40 outstanding students have benefited from the scholarship. The R&D Center also sponsors and provides technical guidance to students from local middle schools who participate in science and technology championships initiated by the world-renowned non-profit organization FIRST.

The employees of Caterpillar China R&D Center have donated to Wenchuan and Ya'an earthquake relief efforts after these two earthquakes. The R&D Center has set up volunteer organizations and employees have been actively participating in many charity projects, such as helping students from Wuxi Luoshe Migrant School, the annual tree-planting for the Caterpillar Foundation Charity Forest, spending time with the elderly in charity houses and supporting middle school students in youth science festivals, environmental protection initiatives and campus lectures.

### Milestones



#### 2005.1

- The Caterpillar China R&D Center was founded.

#### 2005.6

- The Qingdao Branch was established.

#### 2007.8

- The Tianjin Branch was established.

#### 2008.6

- The Wuxi Branch was established.

#### 2009.12

- Wuxi R&D Center phase I in operation.

#### 2010

- Obtained the Leadership in Energy and Environmental Design (LEED) New Construction Gold Certification given by the U.S. Green Building Council.

#### 2011.5

- Wuxi R&D Center phase II in operation.

#### 2011.11

- The headquarters of Caterpillar China R&D Center moved to Wuxi.

#### 2012

- Certified as Technical Advanced Service Enterprise.
- Awarded the Innovation and Entrepreneurship Award by Wuxi New District.
- Named Functional Institution of International Companies in Jiangsu Province by Jiangsu Provincial Government.
- Named Certificated Foreign Invested R&D Center in Jiangsu Province by Jiangsu Provincial Government.

#### 2012.6

- Wuxi R&D Center phase III in operation.

#### 2013

- Named Wuxi Outstanding Outsourcing Service Provider by Wuxi Municipal Government.

- Won Caterpillar Chairman's Award for Sustainability.

- Named one of Top 10 Most Influential R&D Centers in China by the Chinese version of *Scientific American*.

#### 2013.11

- Wuxi R&D Center phase IV in operation.

#### 2014

- Selected as a Model Enterprise in Wuxi New District by Wuxi New District.
- Named one of China's Top 20 Leading Outsourcing Service Provider by China Council for International Investment Promotion.
- Certified as Technical Advanced Service Enterprise again.
- Multiple laboratories obtained the China National Accreditation Service for Conformity Assessment (CNAS) Certificate (ISO 17025)17025).



# 卡特彼勒 (通州) 有限公司

卡特彼勒(通州)有限公司位于江苏省南通市通州区锡通科技产业园，占地面积 320 亩，由卡特彼勒亚太区试验场和大型轮式装载机工厂组成。



为你铸就™

亚太区试验场是卡特彼勒无锡研发功能的有力补充，主要为亚太区设计和生产的卡特机器提供工程测试和产品开发服务。

大型轮式装载机厂生产全新的大型装载机机型，以满足中国和其它新兴市场的客户需求。

卡特彼勒(通州)有限公司

地址：江苏省南通市通州区锡通科技产业园竹松路 18 号  
邮 编：226300

**CATERPILLAR®**  
卡特彼勒



# Caterpillar (Tongzhou) Ltd.

Caterpillar (Tongzhou) Co., Ltd. is located in Xitong Technology Park, Tongzhou, Jiangsu Province, China and occupies 53 acres. It is a shared campus between Asia Pacific Proving Ground (APPG) and the Large Wheel Loader manufacturing facility.



**BUILT FOR IT.**

The Asia Pacific Proving Ground (APPG) is an expansion of Caterpillar China Research and Development Center in Wuxi and provides engineering validation and product development services for Cat products designed or produced in the Asia Pacific region.

The Large Wheel Loader manufacturing facility produces a new model of wheel loader to support customer demand in China and other growth markets.

Caterpillar (Tongzhou) Co., Ltd.

Address: No. 18 Zhusong Road, Xitong Science & Technology Industrial Park, Tongzhou District, Nantong, Jiangsu Province, China  
Postcode: 226300

**CATERPILLAR®**  
卡特彼勒





# 卡特彼勒（吴江）有限公司

卡特彼勒（吴江）有限公司（“卡特彼勒吴江”）于 2011 年 7 月成立于苏州市吴江区，工厂占地面积为 110,466m<sup>2</sup>，生产 300 系列小型液压挖掘机供应中国市场和全球市场。



为你铸就。™

在工厂成立初期，卡特彼勒吴江工厂只生产 306 和 307D 两种型号的小型液压挖掘机。为了满足中国客户“高收益，低油耗”的生产需求，卡特彼勒建筑机械事业部 (BCP) 于 2013 在吴江工厂发布新产品——E 系列小型液压挖掘机。目前，卡特彼勒吴江工厂生产六种型号的 E 系列小型液压挖掘机，分别是 303.5E CR，305.5E2，306E2，307E2，308E2 和 307E2 Tier 4F。

卡特彼勒（吴江）有限公司  
地 址：江苏省吴江经济开发区新字路 668 号  
(同津大道和新字路交叉口)  
邮 编：215200  
电 话：(86-512) 6319 9000

**CATERPILLAR®**  
**卡特彼勒**



卡特彼勒吴江团队致力于打造世界最佳的卡特彼勒工厂，引领行业并为客户创造更大价值。为了实现这一目标，卡特彼勒吴江工厂一直践行“精益”制造准则。作为一个高效凝聚的团队，卡特彼勒吴江工厂汇集了来自美国、英国、日本、中国等国家的 212 名员工。

卡特彼勒吴江工厂在卡特彼勒行动价值观的基础上承担社会责任，促进知识分享和传播，保护环境和自然资源并推动基本的人道主义援助。卡特彼勒吴江积极履行企业社会责任，关注社会公益。自 2011 年起，卡特彼勒吴江工厂员工积极参与卡特彼勒基金会公益林的种植和养护工作，还通过企校合作支持苏州本地院校，并积极参与本地社区的社会公益活动。



## 大事记



**2010.11.18**

| 工厂举行奠基仪式。

**2011.7**

| 工厂成立。

**2011.10.17**

| 第一台小型液压挖掘机（307D）成功下线。

**2011.7**

| 工厂搬入新厂房生产。

**2012.19**

| 第一批机器发运。

**2012.3.24**

| 工厂举行开幕典礼。

**2012.9.11**

| 第一批机器出口。

**2012.4.23**

| 工厂成功发运第 2,000 台机器。

**2013.5.24**

| 工厂获得 ISO 9001 认证。

**2013.6.6**

| 工厂发布新型 E 系列小型液压挖掘机。

**2014.2.27**

| 获得卡特彼勒集团“最佳生产运营新公司”提名奖。

**2015.7.15**

| 工厂成功发运第 5,000 台机器。

**2015.2.5**

| 荣获 2014 年度卡特彼勒“最佳生产运营新公司”主席奖。

**2015.3.10**

| 获得卡特彼勒质量管理体系认证。

**2015.10.19**

| 307E2 Tier 4 Final 产品首次出口美国。



# Caterpillar (Wujiang) Ltd.

Established in July 2011, Caterpillar (Wujiang) Ltd. ("Caterpillar Wujiang") is based in Wujiang District, Suzhou in East China's Jiangsu Province. The facility has a construction area of 110,466 m<sup>2</sup> and specializes in the production of 300 series mini-hydraulic excavators for China and global markets.



**BUILT FOR IT.**

The facility opened producing two types of mini-hydraulic excavators, 306 and 307D. In response to increasing demand of Chinese customers for higher performance and lower operating costs, the facility began production of E-series mini-hydraulic excavators in 2013. Today, six types of E-series mini-hydraulic excavators are produced at the facility: 303.5E CR, 305.5E2, 306E2, 307E2, 308E2 and 307E2 Tier 4F.

Caterpillar (Wujiang) Ltd.

Address: No. 668 Xinzi Road, Wujiang Economic Development Zone,

Jiangsu Province, China

Post code: 215200

Tel: (86-512) 6319 9000

**CATERPILLAR®**  
**卡特彼勒**

Caterpillar Wujiang strives to be a world-class Caterpillar facility, creating value for customers and ensuring a leading position in the industry. Caterpillar Wujiang is committed to practicing Lean Principles and fostering a highly engaged, global team of 212 employees from the U.S., UK, Japan and China.

Building on Caterpillar's Values in Action, Caterpillar Wujiang takes corporate social responsibility seriously by focusing on knowledge and education, protecting environment and natural resources and promoting humanitarian aid. Caterpillar Wujiang has participated in the Caterpillar Foundation Charity Forest project since 2011, supported Suzhou local schools through enterprise-school cooperation, and actively attended local communities' social responsibility activities.



## Milestones



**2010.11.18**

| Held foundation laying ceremony.

**2011.7**

| Caterpillar Wujiang was established.

**2011.10.17**

| Produced the first machine, 307D.

**2011.11.7**

| Moved into new facility for production.

**2012.19**

| Shipped first batch of products.

**2012.3.24**

| Held the grand opening.

**2012.9.11**

| Began exporting products.

**2012.4.23**

| Shipped the 2,000th machine.

**2013.5.24**

| Achieved ISO 9001 certification.

**2013.6.6**

| Held the E-series launch ceremony.

**2014.2.27**

| Nominated for Caterpillar Chairman's Award for Operations Excellence.

**2014.7.15**

| Shipped the 5,000th machine.

**2015.2.15**

| Won the 2014 Chairman's Award for Operations Excellence – New Facility.

**2015.3.10**

| Achieved the certification from Caterpillar Quality Management System (CQMS).

**2015.10.19**

| Exported the 307E2 Tier 4 Final to the U.S..



# 卡特彼勒（苏州）有限公司

卡特彼勒（苏州）有限公司（“卡特彼勒苏州”）于 2006 年落户于江苏省苏州工业园区，建筑面积 74,561m<sup>2</sup>，工厂拥有员工 780 名。卡特彼勒苏州为卡特彼勒全资拥有并经营，为中型轮式装载机和平地机在亚太地区的主要生产基地，产品主要销往亚洲、俄罗斯等独联体国家、非洲、中东以及南美地区。



根据卡特彼勒可持续发展方针，卡特彼勒苏州从厂房的设计到建造都按照并满足了由美国绿色建筑协会制定的能源与环境设计先锋（LEED）认证标准，并且在 2010 年 3 月获得了新建筑金级认证。

卡特彼勒（苏州）有限公司  
地 址：中国江苏省苏州市工业园区综合保税区  
启明路 58 号  
邮 编：215121  
电 话：(86-512) 6255 3000  
传 真：(86-512) 6917 7124

**CATERPILLAR®**  
卡特彼勒



卡特彼勒苏州积极承担企业社会责任，参与社会公益活动项目。从 2011 年起，卡特彼勒苏州每个学期都为当地打工子弟学校优秀学生发放奖学金。2013 年为当地培智学校捐赠康复设备。同时，卡特彼勒苏州员工热心公益，积极参加志愿活动，包括卡特彼勒基金会公益林、2013 年雅安地震捐款和“放养生态鱼，洁净太湖水”的活动。

## 大事记



**2008.1**

| 奠基仪式。

**2009.5**

| 首台平地机及首台装载机下线。

**2010.1**

| 开业庆典。

**2010.3**

| 荣获“能源和环境设计先锋”新建筑金级认证。

**2010.5**

| 通过 ISO 9001 质量管理体系认证。

**2011.11**

| 第五千台机器下线。

**2013.3**

| 第一万台机器下线。  
| 荣获 2012 卡特彼勒杰出运营总裁奖。

**2014.11**

| 第一万五千台机器下线。

# Caterpillar (Suzhou) Co., Ltd.

Caterpillar (Suzhou) Co. Ltd. (Caterpillar Suzhou) was established in Suzhou Industrial Park, Jiangsu Province in 2006. The facility has a construction area of 74,561 square meters and 780 employees. Fully owned and operated by Caterpillar, Caterpillar Suzhou is a major production base in Asia-Pacific for medium wheel loaders and motor graders, with products sold in Asia, Russia, the Commonwealth of Independence States, Africa, Middle East and South America.



In accordance with Caterpillar's commitment to sustainable development, Caterpillar Suzhou had its facility designed and constructed to meet the LEED (Leadership in Energy and Environmental Design) standard and it received the LEED-NC Gold Certification in March 2010.

## Caterpillar (Suzhou) Co., Ltd.

Address: No.58 Qiming Road, Suzhou Industrial Park  
International Trade Zone, Suzhou, Jiangsu Province, China  
Postcode: 215021  
Tel: (86-512) 6255 3000  
Fax: (86-512) 6917 7124

**CATERPILLAR®**  
卡特彼勒



Caterpillar Suzhou is committed to social responsibility by participating in various charity projects. Since 2011, Caterpillar Suzhou has offered scholarships every semester to outstanding students from local migrant schools. It donated rehabilitation equipment to local special education schools in 2013. Employees at Caterpillar Suzhou actively participate in volunteerism activities, including the Caterpillar Foundation Charity Forest tree-planting, 2013 Ya'an earthquake disaster relief donation and fish releasing for a clear Taihu Lake.

## Milestones



### 2008.1

- | Ground-breaking ceremony.

### 2009.5

- | First wheel loader and motor grader rolled off.

### 2010.1

- | Grand opening.

### 2010.3

- | Certified the LEED Gold Certification.

### 2010.5

- | Received the ISO9001 certification for quality management systems.

### 2011.11

- | The 5,000th unit machine rolled off.

### 2013.3

- | The 10,000th unit machine rolled off.

- | Awarded the 2012 Caterpillar Chairman Award for Operations Excellence.

### 2014.11

- | The 15,000th unit machine rolled off.



# 派若搬 (苏州) 安全系统有限公司

/ 1972 年，派若搬公司在英国布莱顿正式成立，并逐渐成长为防爆安全领域的全球领导者，其安全系统广泛应用于石油和天然气、物料搬运和存储、油漆涂料、食品、汽车、海事、煤矿及化妆品行业。

/ 2006 年，派若搬在苏州设立了中国工厂派若搬（苏州）安全系统有限公司（“派若搬苏州”），工厂面积 1,300 平方米，对国内外各品牌的叉车和其他移动设备进行防爆改装。符合中国国家防爆标准 GB19854-2005 以及欧洲标准 EN1755:2000+A1:2009。经改装、认证后的防爆设备可以安全地应用于潜在爆炸性危险环境中。



## 派若搬（苏州）安全系统有限公司

派若搬（苏州）安全系统有限公司  
地址：江苏省苏州工业园区唯新 9 号唯亭工业坊 A 区 B2  
邮编：215122  
电话：(86-512) 6275 6800  
网址：www.pyroban.com

**PYROBAN®**

---

/ 派若搬苏州成立至今，已经成功改装超过 1000 台防爆叉车，并将其投入市场安全运营。派若搬苏州已经与国际知名叉车生产商林德、海斯特建立了战略合作伙伴关系，同时也与其他品牌叉车制造商如永恒力、丰田、合力等进行了长期深入的合作，对各品牌叉车均有丰富的改装经验。2011 年 9 月，派若搬在广州黄埔设立了一站式技术服务中心，旨在为华南地区客户提供更加便捷和专业的服务。

/ 2011 年 9 月，派若搬公司正式加入卡特彼勒，隶属于船舶与石油动力事业部。派若搬始终致力于安全领域的发展，始终坚持“以人为本，保障您的投资，保护我们的环境”的防爆安全理念，并继续在全球范围内提供其核心产品和服务，为市场提供领先的防爆安全和环保解决方案。

---

## 企业社会责任

/ 派若搬苏州积极承担企业社会责任，依托广东省质量技术监督部门与广州特检院合作成功举办了五届防爆设备安全技术与管理研讨会，累计向 200 多家危化企业普及防爆理论，帮助用户选择正确的安全设备并正确的使用和保养，以实现设备的可持续性安全操作。

---



---

# Pyroban (Suzhou) Safety Systems Co., Ltd.

/ In 1972, Pyroban was established in Brighton, Britain. The company has grown to become a global leader in the explosion protection industry. Its protection systems are widely used in various businesses including oil & gas, materials handling/storage, paint, food, automotive, marine, coal mining and perfumes/cosmetics.

/ In 2006, Pyroban opened its first China facility in Suzhou. Pyroban (Suzhou) Safety Systems Co., Ltd. ("Pyroban Suzhou") covers 1,300 square meters. The facility handles the explosion protection refitting of all international and major local brands of forklift trucks and material handling equipment, ensuring that the refitted equipment is safe for use in potentially explosive environments and complies with China's national standard GB19854-2010 and European standard EN1755:2000+A1:2009.



## **Pyroban (Suzhou) Safety Systems Co., Ltd.**

Address: B2, Block A, Weiting Industrial workshop,  
No. 9 Weixin Road, Suzhou Industrial Park, Suzhou,  
Jiangsu Province, China  
Postcode: 215122  
Tel: (86-512) 6275 6800  
Website: [www.pyroban.com](http://www.pyroban.com)

**PYROBAN®**



---

/ So far, Pyroban Suzhou has delivered over 1,000 units of explosion proof trucks. Pyroban Suzhou has been a strategic partner of top international forklift truck makers Linde and Hyster, and has also developed a close business relationship with other forklift makers such as Jungheinrich, Toyota and Heli. In September 2011, Pyroban opened a one-stop technical service center in Huangpu, Guangzhou, Guangdong Province, China, aiming to offer fast and professional services to customers in south China.

/ Pyroban joined Caterpillar as a new member within the Marine & Petroleum Power Division in September 2011. Committed to developing the safety protection sector and sticking to the explosion protection concept "Protecting People, Their Investment and Our Environment," Pyroban continues to offer its core products and services worldwide, and provides world-leading solutions for explosion protection and environment protection.

---

## Corporate Social Responsibility

/ Pyroban Suzhou takes a proactive approach to corporate social responsibility. With the support of Guangzhou Bureau of Quality & Technical Supervision, it has co-sponsored five seminars on safety technology and the management of explosion protection equipment with Guangzhou Academy of Special Equipment Inspecting & Testing to promote the explosion protection concept to more than 200 hazardous chemical enterprises. The seminars help users choose the right safety equipment and use and maintain the equipment in the right way to achieve sustainably safe operation of the equipment.

---



# 卡特彼勒（苏州） 物流有限公司

卡特彼勒（苏州）物流有限公司（“卡特彼勒苏州物流”）是卡特彼勒的全资子公司，隶属于卡特彼勒企业系统集团全球供应网络事业部。公司于 2009 年 10 月在苏州工业园区注册，2010 年 8 月正式运营。卡特彼勒苏州物流拥有 12000 平方米的保税和非保税仓库，现有 120 多名员工。



为你铸就

作为卡特彼勒全球采购网络节点之一，卡特彼勒苏州物流依托卡特彼勒全球供应商资源，通过集中采购和物流整合，向卡特彼勒全球制造工厂和一级供应商提供制造标准小件和其它零部件。卡特彼勒苏州物流将标准的服务体系扩展到全球 29 家卡特彼勒工厂和超过 100 家一级供应商，并向 4 家卡特彼勒中国工厂提供线边补货服务。公司不断积累经验，优化流程，向卡特彼勒全球工厂提供最具性价比的生产用零部件物流服务。

卡特彼勒（苏州）物流有限公司

地址：江苏省苏州工业园区千人街 152 号 C22 仓库

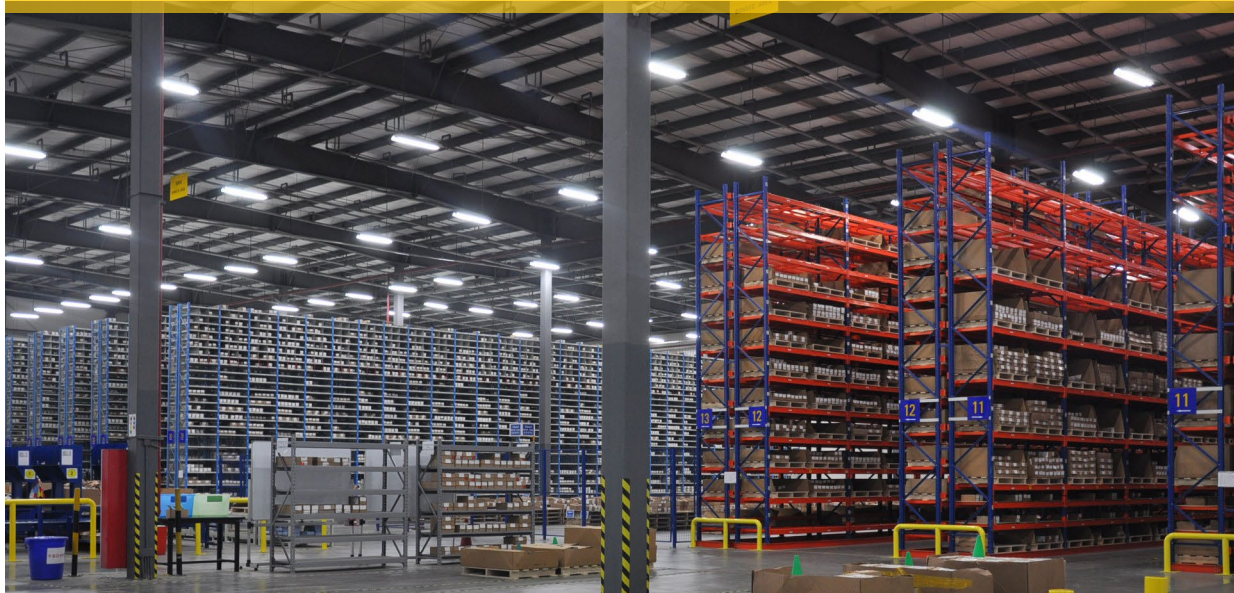
邮编：215121

电话：(86-512) 6873 5700

传真：(86-512) 6271 2051/2

卡特彼勒苏州物流致力于遵循卡特彼勒生产体系中的可持续发展，开展了多个六西格玛项目和快速改进研讨会。到 2014 年 3 月，卡特彼勒苏州物流实现向客户累计发送超过两百万盒制造标准小件的目标。卡特彼勒苏州物流还因卓越表现荣获了所在事业部 2012 年度副总裁质量竞赛冠军和 2013 年度卡特彼勒环保卓越金奖。

## 里程碑



**2009**

| 公司成立

**2010**

| 正式运营

**2011**

| 开始向卡特彼勒中国其他工厂和海外客户出货

**2012**

| 正式以整个集装箱方式大批向美国物流中心出口标准小件

| 荣获所在事业部 2012 年度副总裁质量竞赛冠军

| 正式通过 ISO9001:2008 质量管理体系认证

**2013**

| 连续 1000 天安全无工伤事故

| 荣获 2013 年度卡特彼勒环保卓越金奖

©2015 Caterpillar 版权所有。CAT、CATERPILLAR、“为你铸就”，及相应徽标：“Power Edge”商业外观以及此处使用的企业标识和产品标识，均为 Caterpillar 商标，未经许可，不得使用。



# Caterpillar (Suzhou) Logistics Co., Ltd.

Caterpillar (Suzhou) Logistics Co., Ltd. ("Caterpillar Suzhou Logistics") is a Caterpillar wholly owned subsidiary under the Global Supply Network Division of the Caterpillar Enterprise System Group. The facility was registered in Suzhou Industrial Park in October 2009 and officially opened in August 2010. It covers 12,000 square meters of bonded and non-bonded warehouses. The facility has more than 120 employees.



**BUILT FOR IT**

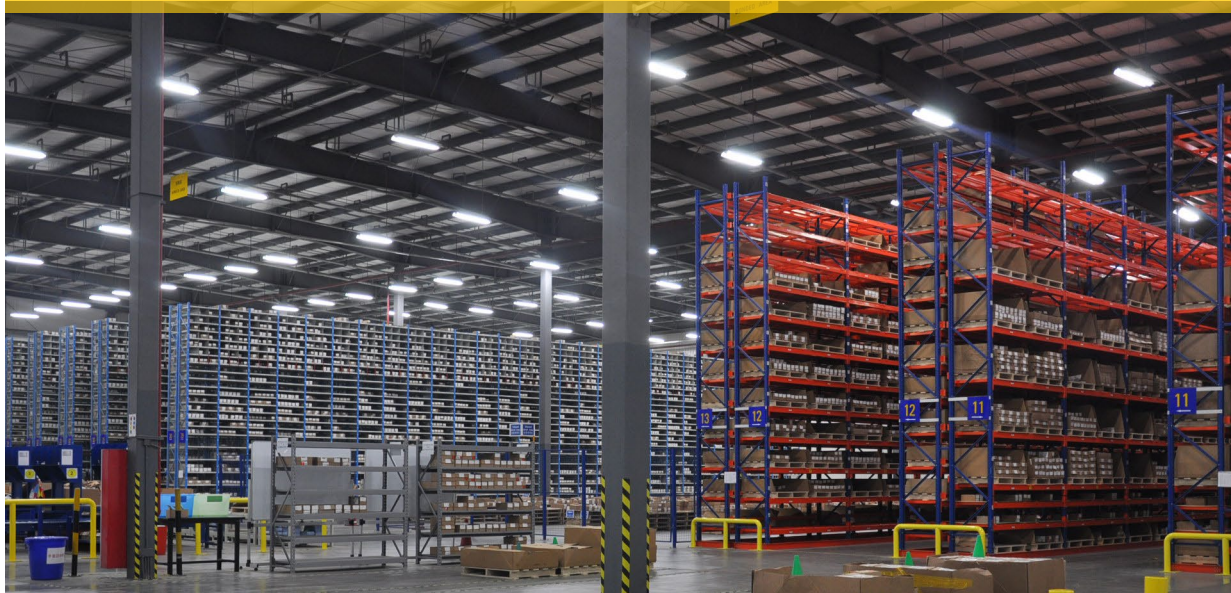
As a part of the Caterpillar global supply network, which relies on Caterpillar global supplier resources, Caterpillar Suzhou Logistics provides H2K (Hand-weight 2-box Kanban) and other parts to Caterpillar facilities worldwide and to tier-1 suppliers through centralized purchasing and logistics integration. Caterpillar Suzhou Logistics has expanded its standard service system to 29 Caterpillar facilities and more than 100 tier-1 suppliers worldwide, and it provides Point of Use (POU) services to four Caterpillar facilities in China. The facility continually accumulates experiences and optimizes processes to provide the most cost-effective logistics services of production-used parts to Caterpillar global facilities.

## **Caterpillar (Suzhou) Logistics Co., Ltd.**

Address: C22 Warehouse, No. 152 Qianren Street, Suzhou Industrial Park,  
Jiangsu Province, China  
Postcode: 215121  
Tel: (86-512) 6873 5700  
Fax: (86-512) 6271 2051/2

Caterpillar Suzhou Logistics is committed to continuous improvement of the Caterpillar Production System and has launched several 6 Sigma projects and rapid improvement workshops. By March 2014, the facility achieved the record of shipping a total of two million H2K boxes to its clients. It also won the 2012 Vice President's Quality Award and 2013 Caterpillar Environmental Excellence Gold Award as the result of excellent performance.

## Milestones



### 2009

- | The facility was established.

### 2010

- | Started official operation.

### 2011

- | Began delivering goods to other Caterpillar China facilities and overseas customers.

### 2012

- | Started to export H2K to US logistics centers in large batches in the form of Full Container Load.
- | Awarded the 2012 Vice President's Quality Award.
- | Obtained the ISO9001:2008 Quality Management System Certificate

### 2013

- | Celebrated 1,000 days without recordable injuries.
- | Awarded the 2013 Caterpillar Environmental Excellence Gold Award.

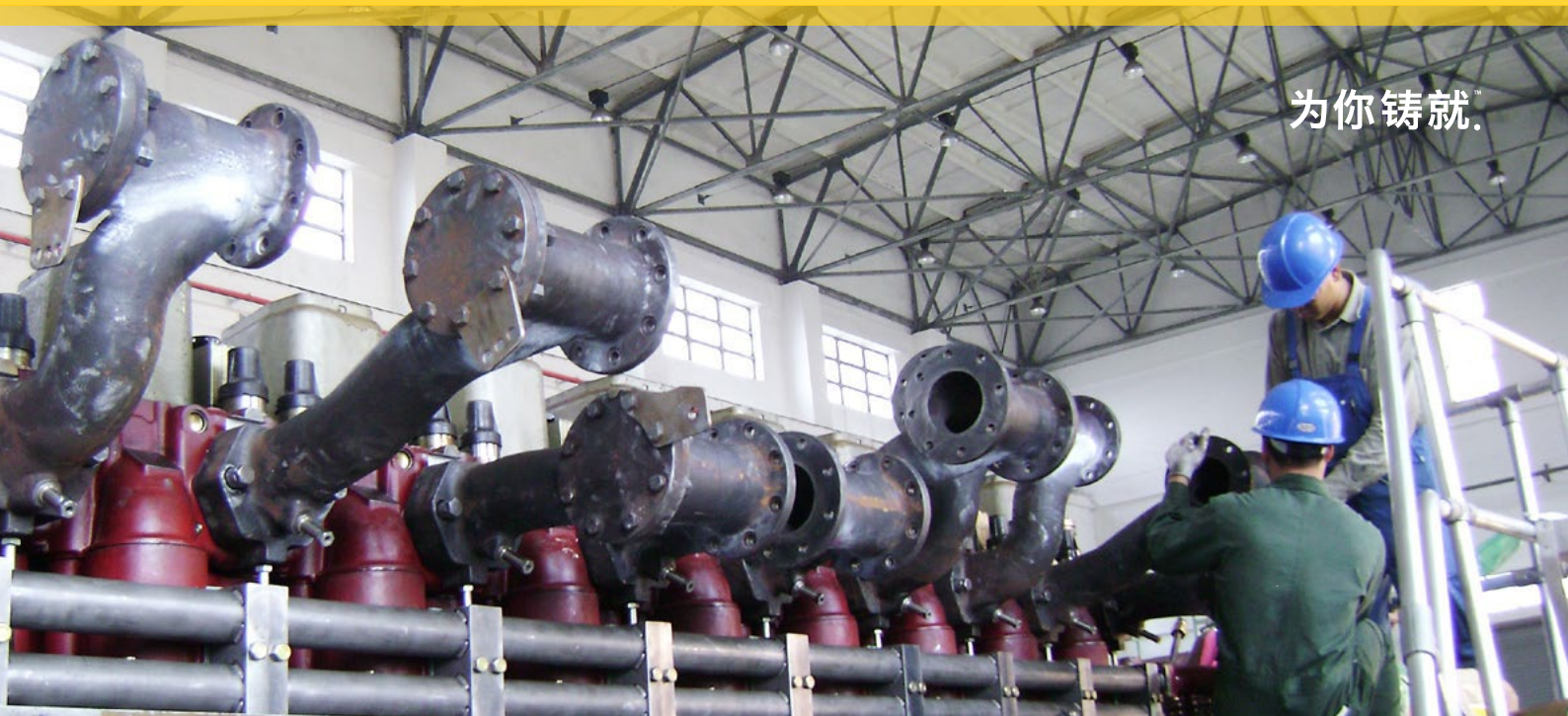
©2015 Caterpillar All Rights Reserved. CAT, CATERPILLAR, their respective logos, "Caterpillar Yellow," the "Power Edge" trade dress as well as corporate and product identity used herein, are trademarks of Caterpillar and may not be used without permission.

# 广东 GUANGDONG



# 卡特彼勒发动机 (广东) 有限公司

卡特彼勒发动机(广东)有限公司是卡特彼勒在中国的独资企业,座落在广东省佛山市顺德区,占地面积 18,642.59 平米,建筑面积 6,154.90 平米。



公司始建于 1994 年,原名为广州马克柴油机有限公司,是由德国著名船用柴油机制造商克虏伯马克柴油机公司与中国广州柴油机厂合资组建的合资公司,主要装配生产和试验 MaK 品牌的船用发动机和柴油发电机组。从 2005 年起,成为卡特彼勒的全资子公司,并更名为卡特彼勒发动机(广东)有限公司。

卡特彼勒发动机(广东)有限公司的经营许可范围包括船用柴油机及其辅助系统的设计、制造、装配、试验及售后服务,并在 2006 年同时通过了世界十大著名船级社的 ISO9001 认证,包括英国劳氏船级社、德国劳氏船级社、中国船级社和挪威船级社等。

卡特彼勒发动机(广东)有限公司生产 MaK M453 发动机、发电机组及 M25(C) 发动机,客户遍及亚太区,在执行和提升卡特彼勒中国战略以及卡特与 MaK 产品出口方面起着重要的作用。

卡特彼勒发动机(广东)有限公司

地址:广东省佛山市顺德区陈村镇石洲工业区白陈路 27 号

邮编:528314

电话:(86-757) 2330 5114

卡特彼勒发动机（广东）有限公司关注以人为本和可持续性发展，通过对员工进行持续培训，建立起一支高素质的团队并以此保证了高品质的产品。

在“正直、卓越、团队、承诺、可持续性”的卡特彼勒行动价值观的指导下，卡特彼勒发动机（广东）有限公司严格遵循卡特彼勒生产体系，继承先进的企业文化并坚持安全生产，已经创造了超过 8 年无损失工时事故的安全生产记录。

## 里程碑



### 1994

| 克虏伯马克公司和广州柴油机厂合资组建成立广州马克柴油机公司。

### 2012

| 获得广东省顺德区“和谐劳动关系模范企业”称号。

### 2005

| 广州马克柴油机公司加入卡特彼勒，成为其在中国的第一家船用发动机公司，并更名为卡特彼勒发动机（广东）有限公司。

### 2013

| 卡特彼勒发动机（广东）有限公司创造了连续 8 年无损失工时事故的安全生产记录。

### 2009

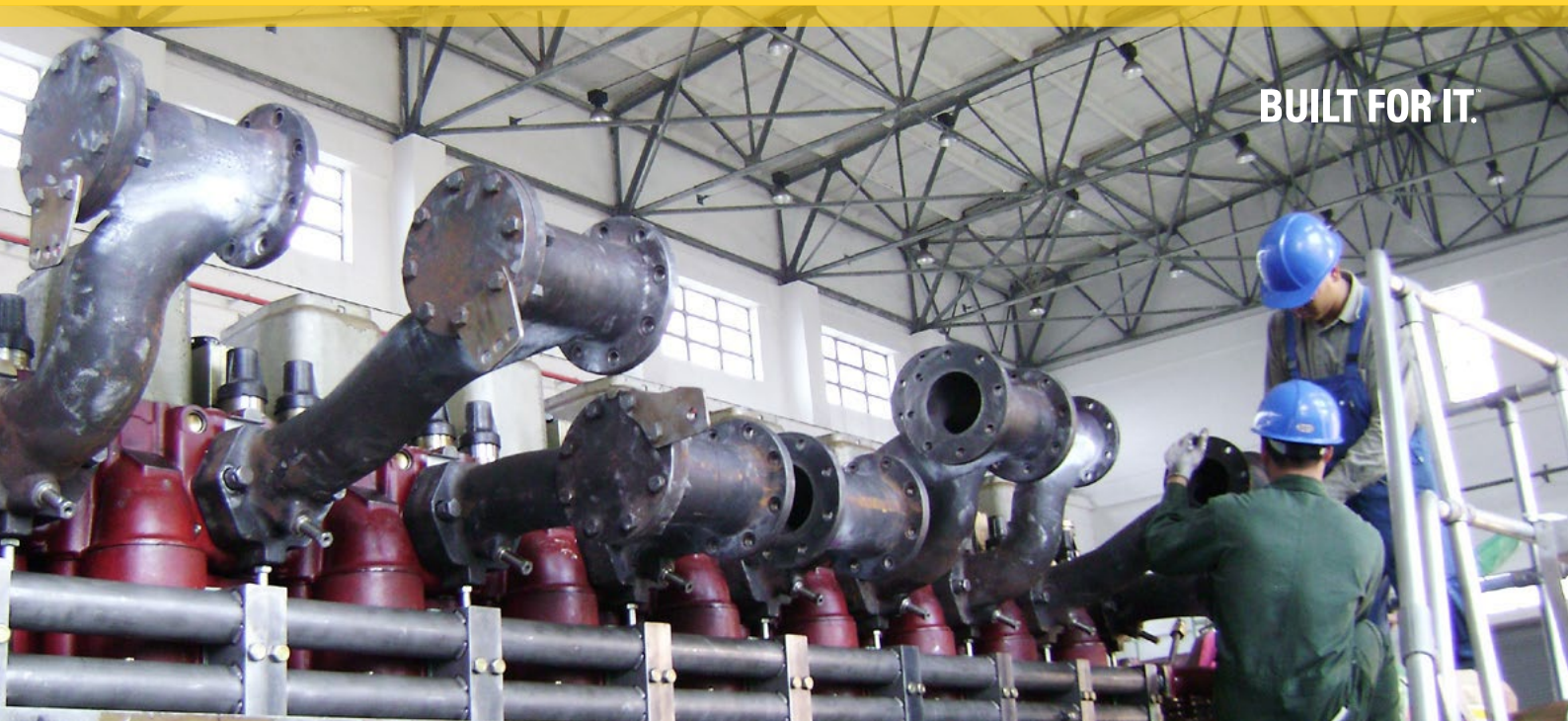
| 第 100 台 M25 船用发动机通过验收。

©2015 Caterpillar 版权所有。CAT、CATERPILLAR、“为你铸就”，及相应徽标、“Power Edge”商业外观以及此处使用的企业标识，均为 Caterpillar 商标，未经许可，不得使用。



# Caterpillar Motoren Guangdong Co., Ltd

Caterpillar Motoren Guangdong Co., Ltd ("Caterpillar Motoren Guangdong") is a wholly-owned company of Caterpillar in Shunde, Foshan, Guangdong Province, China. The facility occupies an area of 18,642.59 square meters and a building area of 6,154.90 square meters.



Founded in 1994 as a joint venture between German diesel engine manufacturer Krupp Mak and China Guangzhou Diesel Engine Factory, the company was first called Guangzhou MaK Diesel Engine Co., Ltd. The company assembled, produced and tested Mak-brand marine engines and gensets. In 2005, it became a Caterpillar wholly-owned company and was renamed Caterpillar Motoren Guangdong Co., Ltd.

Caterpillar Motoren Guangdong designs, manufactures, assembles, tests and conducts after-sales service of marine engines and supporting systems. In 2006, the facility received ISO 9001 certification by 10 world-renowned classification societies, including Lloyd's Register, Germanischer Lloyd, China Classification Society and Det Norske Veritas (DNV).

The facility produces MaK M453 engines, gensets and M25(C) engines for customers throughout the Asia-Pacific. Caterpillar Motoren Guangdong plays an important role in implementing and enhancing Caterpillar China strategy, as well as increasing exports of Cat and MaK products.

## Caterpillar Motoren Guangdong Co., Ltd

Address: No.27 Baichen Road, Shizhou Industrial Estate,  
Chencun Town, Shunde District, Foshan, Guangdong  
Province, China  
Postcode: 528314  
Tel: (86-757) 2330 5114



With attention on people orientation and sustainable people development, the company has built a high-quality team through continuous training of employees so as to guarantee high-quality products.

Under the guidance of Our Values in Action – Integrity, Excellence, Teamwork, Commitment and Sustainability – Caterpillar Motoren Guangdong strictly follows the Caterpillar Production System and embraces the responsibility to protect the health and safety of others and ourselves. The facility has achieved a zero injury safety record for more than 8 years.

## Milestones



### 1994

- | Joint venture Guangzhou MaK Diesel Engine Co., Ltd established by Krupp Mak and Guangzhou Diesel Engine Factory.

### 2005

- | Became the first wholly-owned marine engine company of Caterpillar in China and was renamed as Caterpillar Motoren Guangdong Co., Ltd.

### 2009

- | The 100th M25 marine engine being checked accepted by approving agency.

### 2013

- | Reached 8 years of safe work without lost time injuries.

### 2012

- | Won the honor of "Model company with harmonious labor relations in Shunde, Guangdong Province".

©2015 Caterpillar All Rights Reserved. CAT, CATERPILLAR, their respective logos, "Caterpillar Yellow," the "Power Edge" trade dress as well as corporate and product identity used herein, are trademarks of Caterpillar and may not be used without permission.