



# Cat<sup>®</sup> D6T WH

## Waste Handler

*From pushing trash to spreading cover, and cell construction to closing, Cat<sup>®</sup> Waste Handlers are designed and manufactured from the frame up to take on the demands of landfill work.*

### Durability

- Specialized guarding throughout the machine helps protect major components like the chassis, fuel tank and hydraulic tank from impact and airborne debris.
- Multi-layer final drive guards, including a labyrinth-style guard with 90-degree turns, help keep dirt and debris away from the Duo-Cone™ seal to protect final drive oil.
- Pivot shaft seal guards help prevent debris from entering and damaging seals.
- Striker bars help prevent debris from damaging the machine, and added seals help reduce the amount of material entering engine and transmission compartments.
- Tilt cylinder with rotating bushing type design help wrapping materials to roll off hoses.
- Heavy duty hinged radiator guard protects radiator and fan from penetration by material coming straight in or from under the blade.
- Cooling system designed for high debris environments, with automatic reversing fan and swing-out access for cleanout.
- Laminated thermal shields and insulated Clean Emissions Module.
- Hinged belly guard for easy cleaning.
- Landfill blades and center-hole track shoes help you optimize your waste handler for the job.
- Lights mounted up and away from main debris area for protection, while still giving you plenty of light on the work area.

### Ease of Operation

- Comfortable, quiet operator station with excellent visibility and air handling features to help keep dust out/provide air filtration.
- Enhanced AutoShift allows your operator to select optimum ground speed for the job and helps save fuel by automatically choosing the more efficient gear based on load.
- Low effort, responsive controls for precision and ease of operation.
- Selectable electro-hydraulic maps let you set implement response to match operator preferences and application.
- Rear vision camera available to enhance visibility behind the machine.
- Meets U.S. EPA Tier 4 Final/EU Stage IV/Korea Tier 4 emission standards with emissions technology that is transparent – no action required from the operator, no stopping for regeneration.

### Technology

- Cat GRADE with **Slope Assist (S)** – (available mid-2016) automatically maintains pre-established blade angles to save time, increase finish quality and reduce operator effort, especially for cover work. Experienced operators can work more productively; less experienced operators can achieve better quality results more quickly.
- **Cat Stable Blade (S)** complements operator input to automatically make instantaneous adjustments for smoother grading results with less effort.
- **Cat Slope Indicate (S)** shows cross slope and mainfall on the primary machine display to help operators work more confidently.
- **Cat GRADE with 3D (O)** is an integrated grade control system that helps operators grade with more accuracy and efficiency. Antennas mount on top of the cab – not on the blade – so they are safely out of the way of landfill debris.
- **Cat AccuGrade™ (O)** machine control and guidance option helps operators improve productivity and accuracy by as much as 50% over conventional methods.
- Remote monitoring with Product Link™/VisionLink<sup>®</sup> helps you manage your fleet more effectively and profitably.



# Cat® D6T WH Waste Handler

## Engine Power and Fuel Capacity

Engine Model	Cat C9.3 ACERT™	
Emissions	Tier 4 Final/Stage IV/ Korea Tier 4	
Net Power (Rated) – 2,000 rpm		
ISO 9249/SAE J1349	154 kW	207 hp
ISO 9249/SAE J1349 (DIN)	210 hp	
Net Power (Maximum) – 1,600 rpm		
ISO 9249/SAE J1349	180 kW	241 hp
ISO 9249/SAE J1349 (DIN)	244 hp	
Fuel Tank	410 L	108 gal
Diesel Exhaust Fluid Tank	17 L	4.5 gal

• All non road Tier 4 Interim and Final, Stage IIIB and IV, Japan 2011 and 2014 (Tier 4 Interim and Tier 4 Final) and Korea Tier 4 diesel engines are required to use only Ultra Low Sulfur Diesel (ULSD) fuels containing 15 ppm (mg/kg) sulfur or less. Biodiesel blends up to B20 (20% blend by volume) are acceptable when blended with 15 ppm for the EPA, 10 ppm for the EU (mg/kg) sulfur or less ULSD. B20 should meet ASTM D7467 specification (biodiesel blend stock should meet Cat biodiesel spec, ASTM D6751 or EN 14214). Cat DEO-ULS™ or oils that meet the Cat ECF-3, API CJ-4, and ACEA E9 specification are required. Consult your OMM for further machine specific fuel recommendations.

• Diesel Exhaust Fluid (DEF) used in Cat Selective Catalytic Reduction (SCR) systems must meet the requirements outlined in the International Organization for Standardization (ISO) standard 22241.

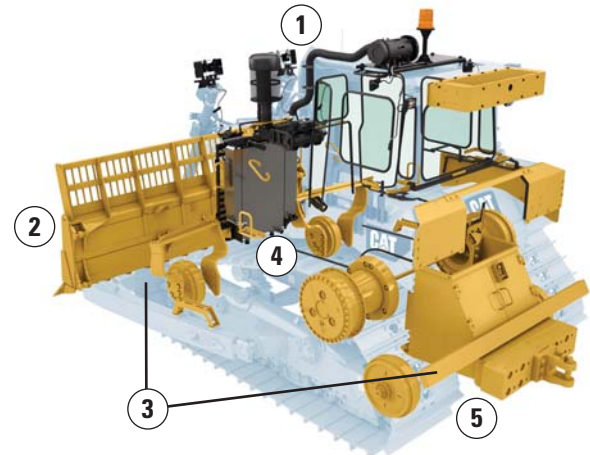
## Blades

	Capacity		Width	
XL SU – Landfill	10.9 m <sup>3</sup>	14.3 yd <sup>3</sup>	3260 mm	10'8"
XL VPAT	4.6 m <sup>3</sup>	6.0 yd <sup>3</sup>	3880 mm	12'9"
XW SU – Landfill	11.3 m <sup>3</sup>	14.7 yd <sup>3</sup>	3560 mm	11'8"
XW/LGP VPAT	5.0 m <sup>3</sup>	6.5 yd <sup>3</sup>	4160 mm	13'8"
LGP S – Landfill	9.4 m <sup>3</sup>	12.3 yd <sup>3</sup>	4080 mm	13'4"

## Operating Weight

XL SU	23 237 kg	51,229 lb
XW SU	24 221 kg	53,398 lb
XW VPAT	26 544 kg	58,519 lb
LGP S	25 266 kg	55,702 lb
LGP VPAT	27 026 kg	59,582 lb

Operating Weight – ISO 16754



## Features

- 1 Specialized air handling features help deliver cleaner air to the machine and to the cab.
- 2 Landfill blade increases capacity and helps prevent material from spilling over on to the radiator.
- 3 Front and rear striker bars help protect machine from debris impacts.
- 4 Clamshell guards on final drives and idler/final drive seals help prevent wire wrap and keep debris from wrapping around Duo-Cone™ seals.
- 5 Bottom guard, chassis and tilt cylinder guards, and guarding over the fuel tank and battery box, provide added protection to major components.

For complete machine features and specifications, please consult your Cat dealer or visit [www.cat.com](http://www.cat.com).

## Dimensions

	XL		XW		LGP		XW VPAT		LGP VPAT	
Width of Tractor (without trunnions)	2.63 m	8'7"	2.88 m	9'5"	3.33 m	10'11"	3.00 m	9'10"	3.14 m	10'4"
Machine Height to Top of Precleaner	3.47 m	11'5"	3.47 m	11'5"	3.53 m	11'7"	3.53 m	11'7"	3.53 m	11'7"
Length of Track on Ground	2.86 m	9'5"	2.86 m	9'5"	3.27 m	10'9"	3.27 m	10'9"	3.27 m	10'9"
Length of Basic Tractor with Striker Bars	4.96 m	16'3"	4.96 m	16'3"	5.26 m	17'3"	5.82 m	19'1"	5.82 m	19'1"
Ground Clearance	372 mm	15"	372 mm	15"	372 mm	15"	406 mm	16"	406 mm	16"
Ground Pressure (ISO 16754)	64.7 kPa	9.39 psi	49.7 kPa	7.21 psi	51.3 kPa	7.44 psi	37.9 kPa	5.49 psi	46.9 kPa	6.81 psi

Add 653 mm (25.7 in)/615 mm (24.2 in) for ripper on short track roller frame and long track roller frame machines respectively.

Add if blade is installed: SU 1068 mm (3 ft 6 in); XL A 1007 mm (3 ft 4 in); XW A 1068 mm (3 ft 6 in); LGP A 1305 mm (4 ft 4 in); VPAT 420 mm (1 ft 5 in).

Dimension to subtract if striker box is not installed: XL = 727 mm (29 in); LGP = 709 mm (28 in).

For more complete information on Cat products, dealer services, and industry solutions, visit us on the web at [www.cat.com](http://www.cat.com)

© 2016 Caterpillar  
All rights reserved

Materials and specifications are subject to change without notice. Featured machines in photos may include additional equipment. See your Cat dealer for available options.

CAT, CATERPILLAR, SAFETY.CAT.COM, their respective logos, "Caterpillar Yellow" and the "Power Edge" trade dress, as well as corporate and product identity used herein, are trademarks of Caterpillar and may not be used without permission.

VisionLink is a trademark of Trimble Navigation Limited, registered in the United States and in other countries.

AEXQ1409-01 (02-2016)  
Replaces AEXQ1409

