

CAT® SKID STEER LOADER, MULTI TERRAIN LOADER AND COMPACT TRACK LOADER ATTACHMENT OPTIONS

» Get Multiple Machines Out of One

For more information, visit
Cat.com/attachments-au or
contact your local Cat dealer.



BUILT FOR IT.™

AEXQ1844-01 February 2016

© 2016 Caterpillar. All Rights Reserved. CAT, CATERPILLAR, BUILT FOR IT, their respective logos, "Caterpillar Yellow," the "Power Edge" trade dress, as well as corporate and product identity used herein, are trademarks of Caterpillar and may not be used without permission.

BUILT FOR IT.™



SPEND LESS AND EARN MORE.

Equip one machine to do it all.

Invest in what you already own – equip your machine with a Cat® attachment and it becomes so much more. Our attachments are engineered, tuned and integrated into each Cat machine model. They promise to minimize stress and optimize performance. Browse our lineup and find the tools to make your work easier.



AUGERS



Bore with better efficiency.

Our augers offer different speed and torque options for work in a variety of soils. We’ve engineered their speed to extract soil efficiently and their torque to prevent stalling in dense ground. Select from a range of auger bits.

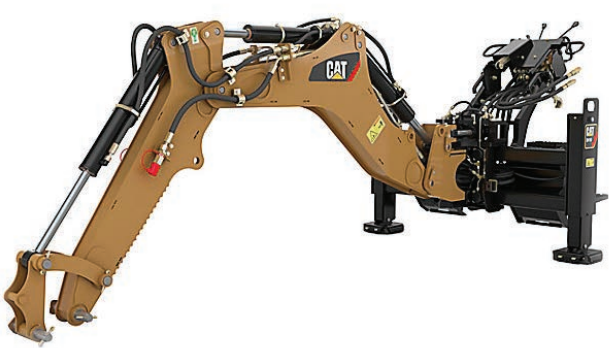
Specifications

Attachment Models	Machine Models	Drive Shaft Torque @ Max Pressure		Drive Method
		Nm	(lb ft)	
A14B	All below	2304	(1700)	Direct Drive
A19B	All below	4122	(3042)	Single Planetary
A26B	All D Series	6826	(5034)	Double Planetary

Skid Steer, Multi Terrain and Compact Track Loaders

216B3	236D	246D	259D	272D2 XHP	287D	297D2 XHP
226D	239D	249D	262D	277D	289D	299D2
232D	242D	257D	272D2	279D	297D2	299D2 XHP

BACKHOES



Excavate more easily.

Control the Cat backhoe from inside the cab — we’ve engineered it so you can dig and reposition all from the operator’s seat. Our side-shift feature allows you to work close to walls for widening trenches, exposing brick ledges and backfilling. Get optional auxiliary hydraulic lines for adding hammers, augers, ditch cleaning buckets, thumbs or vibratory plate compactors.

Specifications

Attachment Models	Machine Models	Bucket Breakout Force		Dig Depth	
		kg	(lb)	mm	(in)
BH150	All below	3241	(7146)	3074	(121)
BH160	246D, 262D-299D2 XHP	3241	(7146)	3074	(121)

Skid Steer, Multi Terrain and Compact Track Loaders

216B3	236D	246D	259D	272D2 XHP	287D	297D2 XHP
226D	239D	249D	262D	277D	289D	299D2
232D	242D	257D	272D2	279D	297D2	299D2 XHP

BALE SPEARS



Make moving bales simple.

Select from our single or dual spear design, both ideal for removing or placing bales in a stack. Our single-spear models include stabilizers and dual-spear models feature a high backrest for large loads. Spears are easily replaced and frames offer a bolt-on step.

Specifications

Attachment Models	Compatibility	Overall Width		Weight	
		mm	(in)	kg	(lb)
990 mm (39 in) Single Tine	All below	1285	(51)	70	(154)
1245 mm (49 in) Single Tine	All below	1285	(51)	72	(158)
990 mm (39 in) Dual Tine	All below	1407	(55)	118	(260)
1245 mm (49 in) Dual Tine	All below	1407	(55)	121	(266)

Skid Steer Loaders

216B3	236D	246D	259D	272D2 XHP	287D	297D2 XHP
226D	239D	249D	262D	277D	289D	299D2
232D	242D	257D	272D2	279D	297D2	299D2 XHP

BLADES



Material movement made easy.

Our blades are made for moving and smoothing materials in multiple applications. Tilt the blade for aggressive cutting of material or pitch the blade back to spread material. Blades have replaceable, reversible cutting edges.

Specifications

Attachment Models	Machine Models	Width		Height	
		mm	(in)	mm	(in)
Angle	All below	1829-2134	(72-84)	614	(24)
Dozer	All below	2002-2342	(79-92)	619	(24)

Skid Steer, Multi Terrain and Compact Track Loaders

216B3	236D	246D	259D	272D2 XHP	287D	297D2 XHP
226D	239D	249D	262D	277D	289D	299D2
232D	242D	257D	272D2	279D	297D2	299D2 XHP

BROOMS



Do some serious sweeping.

Cat brooms are built for even-pressured sweeping for the most thorough debris removal. Our angle brooms are made for moving and windrowing debris aside. Our pickup brooms gather debris as they work and feature a gutter brush for building-base and close-to-the-curb cleaning. And our utility brooms gather light debris, ideal for factory floors. From collection hoppers to dust control features, we offer options for every application.

Specifications

Attachment Models	Machine Models		Sweeping Width		Brush Diameter	
			mm	(in)	mm	(in)
Angle	BA118C	All below	2119	(83)	815	(32)
Pickup	BP115C	All below	1524	(60)	660	(26)
	BP118C	236D-299D2 XHP	1829	(72)	660	(26)
Utility	BU115	All below	1510	(59)	660	(26)
	BU118	236D-299D2 XHP	1865	(73)	660	(26)

Skid Steer, Multi Terrain and Compact Track Loaders

216B3	236D	246D	259D	272D2 XHP	287D	297D2 XHP
226D	239D	249D	262D	277D	289D	299D2
232D	242D	257D	272D2	279D	297D2	299D2 XHP

BRUSHCUTTERS



Efficiently remove overgrowth.

High-speed cutting makes it easy to reduce brush and small trees in open areas, on medians and around utilities. And with three lift points, replacing blades is easy too. All brushcutter models are designed with a reinforced frame for protection from flying debris.

Specifications

Attachment Models	Machine Models	Working Width		Tip Speed	Unit Weight	
		mm	(in)	fpm	kg	(lb)
BR160	216B3, 226D, 232D, 239D, 249D	1524	(60)	13080-18360	431	(950)
BR166	All except 226D, 232D, 239D, 249D	1676	(66)	10270-14420	476	(1050)
BR172	All except 226D, 232D, 239D, 249D	1829	(72)	11210-15730	499	(1100)
BR272	226D, 232D, 239D, 249D	1829	(72)	14940-19660	508	(1120)
BR378	246D, 262D-299D2 XHP	1981	(78)	13700-19970	535	(1180)

Skid Steer, Multi Terrain and Compact Track Loaders

216B3	236D	246D	259D	272D2 XHP	287D	297D2 XHP
226D	239D	249D	262D	277D	289D	299D2
232D	242D	257D	272D2	279D	297D2	299D2 XHP

BUCKETS



Move more material in less time.

The shape of our buckets improves digging, loading and material retention. Compared to most competition, we have more capacity per every inch of width. And each is made of high-strength, tempered steel. Select from a range of bucket teeth.

Specifications

Attachment Models	Machine Models	Width Range		Capacity Range	
		mm	(in)	m ³	(yd ³)
Dirt	All below	1372-1981	(54-78)	0.3-0.44	(0.39-0.57)
General Purpose	All below	1524-2134	(60-84)	0.36-0.63	(0.47-0.82)
Light Material	All below	1829-2438	(72-96)	0.69-0.93	(0.9-1.22)
Material Handling	All below	2134-2591	(84-102)	1.07-1.33	(1.40-1.74)
Multi-Purpose	All below	1524-2134	(60-84)	0.3-0.43	(0.39-0.56)
Utility	All below	1524-1829	(60-72)	0.43-0.52	(0.56-0.67)
		Width Range		Jaw Opening	
		mm	(in)	mm	(in)
Industrial Grapple	All below	1524-1981	(60-78)	1016	(40)
Utility Grapple	All below	1676/1829	(66/72)	902	(35.5)

Skid Steer, Multi Terrain and Compact Track Loaders

216B3	236D	246D	259D	272D2 XHP	287D	297D2 XHP
226D	239D	249D	262D	277D	289D	299D2
232D	242D	257D	272D2	279D	297D2	299D2 XHP

COLD PLANERS

Mill asphalt and concrete quickly.

Our cold planers are made to smooth imperfections and remove deteriorated pavement or paint where dedicated planers can't. A hydraulic side-shift feature allows for planing close to curbs, walls and other obstructions. And our self-leveling technology ensures consistent ground contact.



Specifications

Attachment Models	Machine Models	Drum Width		Number of Bits
		mm	(in)	(Conical)
PC104B	All below	350	(14)	42
PC205B	All below	450	(18)	48
PC305B	All D Series	450	(18)	48
PC306B	All D Series	600	(24)	60
PC306B XD	272D2-299D2 XHP	600	(24)	48
PC310B	246D, 262D-299D2 XHP	1000	(40)	78
PC310B XD	287D-299D2 XHP	1000	(40)	66
PC408B	272D2 XHP, 297D2 XHP, 299D2 XHP	750	(30)	60
PC412B	272D2 XHP, 297D2 XHP, 299D2 XHP	1200	(47)	90

Skid Steer, Multi Terrain and Compact Track Loaders

216B3	236D	246D	259D	272D2 XHP	287D	297D2 XHP
226D	239D	249D	262D	277D	289D	299D2
232D	242D	257D	272D2	279D	297D2	299D2 XHP

FORKS



Transport more materials.

From stacked feedbags to loose straw, load and transport in less time. Our pallet forks were specifically designed to transport palletized items. Our utility forks are ideal for pierceable materials like dried livestock waste or straw. And our pipe and pole forks improve material retention so work is always neat and always efficient.

Specifications

Attachment Models	Machine Models	Tine Length		Fork Tine Width	
		mm	(in)	mm	(in)
Pallet	All below	910-1220	(36-48)	100	(4)
		Width		Exposed Fork Tine Length	
		mm	(in)	mm	(in)
Utility	All below	1676/1829	(66/72)	627	(24.7)
Utility Grapple	All below	1676/1829	(66/72)	627	(24.7)
Industrial Grapple	All below	1676/1829	(66/72)	559	(22)

Skid Steer, Multi Terrain and Compact Track Loaders

216B3	236D	246D	259D	272D2 XHP	287D	297D2 XHP
226D	239D	249D	262D	277D	289D	299D2
232D	242D	257D	272D2	279D	297D2	299D2 XHP

HAMMERS



Separate the toughest surfaces.

Our hammers were designed for hard hits, reducing rock and concrete materials. Each features an automatic shut-off and buffering system to reduce machine vibrations. And some of our hammers are fully enclosed to suppress noise.

Specifications

Attachment Models	Machine Models	Operating Weight**		Blow Rate	Tool Diameter	
		kg	(lb)		mm	(in)
H55E*/H55Es	All below	220-345	(485-761)	600-1680	58	(2.28)
H65E*/H65Es	All below	260-390	(573-860)	720-1740	68	(2.68)

*Flat top and pin-on models available

**Includes hammers, standard tool and mounting bracket

Skid Steer, Multi Terrain and Compact Track Loaders

216B3	236D	246D	259D	272D2 XHP	287D	297D2 XHP
226D	239D	249D	262D	277D	289D	299D2
232D	242D	257D	272D2	279D	297D2	299D2 XHP

MATERIAL HANDLING ARMS



Carry and place with precision.

Safely transport non-uniform materials, as well as plants, trees or shrubs. Cat material handling arms offer two lifting points, each set up to hold a locking hook capable of swiveling 360 degrees.

Specifications

Attachment Model	Machine Models	Width w/side step		Load Length (end point)	
		mm	(in)	mm	(in)
Fixed Length	All below	1309	(52)	768	(30)

Skid Steer, Multi Terrain and Compact Track Loaders						
216B3	236D	246D	259D	272D2 XHP	287D	297D2 XHP
226D	239D	249D	262D	277D	289D	299D2
232D	242D	257D	272D2	279D	297D2	299D2 XHP

MULCHERS

Rapidly reduce vegetation.

Our mulchers can shred any underbrush, sapling, shrub or tree with a 200 mm (8 in) diameter or less. They're engineered to minimize stalling and improve recovery speed for consistent mulching power.

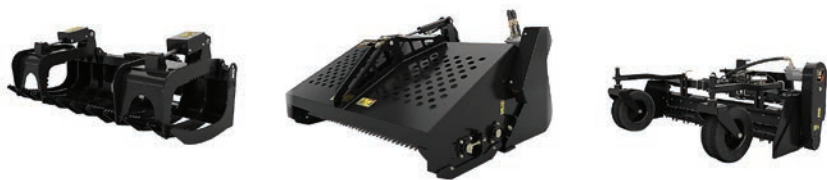


Specifications

Attachment Models	Machine Models	Working Width		Drum Speed rpm	Unit Weight	
		mm	(in)		kg	(lb)
HM112C	216B3, 226D, 232D, 239D, 249D	1240	(49)	2670-3070	763	(1682)
HM115C	236D, 242D, 246D, 257D-299D2 XHP	1480	(58)	2570-2940	818	(1803)
HM215C	226D-242D, 249D-259D	1480	(58)	2480-3020	818	(1803)
HM315C	246D, 262D-299D2 XHP	1582	(62)	2140-2230	1342	(2959)
HM415C	272D2 XHP, 297D2 XHP, 299D2 XHP	1582	(62)	2140-2210	1342	(2959)
HM418C	272D2 XHP, 297D2 XHP, 299D2 XHP	1822	(72)	2140-2210	1450	(3197)

Skid Steer, Multi Terrain and Compact Track Loaders						
216B3	236D	246D	259D	272D2 XHP	287D	297D2 XHP
226D	239D	249D	262D	277D	289D	299D2
232D	242D	257D	272D2	279D	297D2	299D2 XHP

RAKES



Sort with speed.

Cat rakes come in a range of land-clearing options. Our landscape and power box options use hardened teeth to pulverize, aerate, level and condition soil. The landscape rake collects debris in a hopper and the power box rakes at an angle, windrowing debris for easy cleanup. With upper and lower tines, and an open-bottom design, our industrial grapple rake gathers bigger materials.

Specifications

Attachment Models			Machine Models		Jaw Opening		Width	
					mm	(in)	mm	(in)
Industrial Grapple Rake			All below		940	(37)	1829/2134 (72/84)	
			Machine Models		Working Width		Bucket Capacity	
					mm	(in)	m³	(yd³)
Landscape Rakes	LR15B	All below		1576	(62)	0.3	(0.39)	
	LR18B	239D, 246D-299D2 XHP		1883	(74)	0.34	(0.44)	
			Machine Models		Drum Width		Max Angling (right or left)	
					mm	(in)	degrees	
Power Box Rakes	PR172	All below		1829	(72)	20		
	PR184	All below		2134	(84)	20		
	PR190	All below		2286	(90)	20		
Skid Steer, Multi Terrain and Compact Track Loaders								
216B3	236D	246D	259D	272D2 XHP	287D	297D2 XHP		
226D	239D	249D	262D	277D	289D	299D2		
232D	242D	257D	272D2	279D	297D2	299D2 XHP		

SHEARS



Minimize metal.

Our shears rotate 360 degrees for rapid repositioning for more efficient metal reduction. To improve our cutting force, the lower jaw is straight and the upper jaw features an apex design. We've even armed our shears with weld-on wear plates to protect them from scrap metals.

Specifications

Attachment Model	Machine Models		Force at Throat		Jaw Opening	
			kN	(Sh Ton)	mm	(in)
S305	236D-299D2 XHP		1812	(204)	240	(9.4)
Skid Steer, Multi Terrain and Compact Track Loaders						
216B3	236D	246D	259D	272D2 XHP	287D	297D2 XHP
226D	239D	249D	262D	277D	289D	299D2
232D	242D	257D	272D2	279D	297D2	299D2 XHP

SNOW BLOWERS



Quickly clear a path.

Remove snow from streets, parking lots, driveways and sidewalks. Cat snow blowers are built for wet or compacted snow. Our auger pulls snow in and our chute throws it off to the side. And our bolt-on cutting edge ensures the path you clear is clean.

Specifications

Attachment Models	Machine Models	Intake Width		Throw Distance	
		mm	(in)	m	(ft)
SR117	216B3-232D, 239D, 249D	1702	(67)	9.1	(30)
SR118	216B3, 236D, 242D, 246D, 257D-299D2 XHP	1854	(73)	12.2	(40)
SR121	216B3, 236D, 242D, 246D, 257D-299D2 XHP	2159	(85)	12.2	(40)
SR318	All D Series	1854	(73)	13.7	(45)
SR321	All D Series	2159	(85)	13.7	(45)

Skid Steer, Multi Terrain and Compact Track Loaders

216B3	236D	246D	259D	272D2 XHP	287D	297D2 XHP
226D	239D	249D	262D	277D	289D	299D2
232D	242D	257D	272D2	279D	297D2	299D2 XHP

SNOW PLOWS



Scrape snow and ice from ground surfaces.

Windrow snow to either side of the machine or directly ahead. Our snow plows are equipped with a trip edge to clear unseen obstacles. Select from a range of widths.

Specifications

Attachment Models	Machine Models	Weight	
		kg	(lb)
1.8 m (6 ft) Plow	All below	155	(341)
2.1 m (7 ft) Plow	All below	185	(409)
2.4 m (8 ft) Plow	All below	196	(432)
2.7 m (9 ft) Plow	All below	206	(455)
3 m (10 ft) Plow	All below	216	(477)

Skid Steer, Multi Terrain and Compact Track Loaders

216B3	236D	246D	259D	272D2 XHP	287D	297D2 XHP
226D	239D	249D	262D	277D	289D	299D2
232D	242D	257D	272D2	279D	297D2	299D2 XHP

STRAIGHT SNOW PUSHES



Remove snow in a single pass.

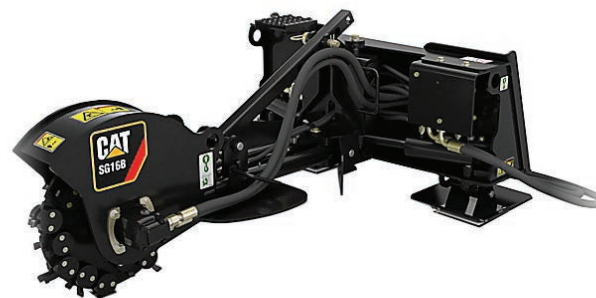
Our straight snow pushes save time and reduce the amount of salt needed. They're ideal for parking lots, driveways, airport runways and storage lots. Select from a range of widths.

Specifications

Attachment Models	Machine Models	Weight	
		kg	(lb)
2.4 m (8 ft) Push Rubber Edge	All below	176	(389)
3 m (10 ft) Push Rubber Edge	All below	197	(434)
3.6 m (12 ft) Push Rubber Edge	All below	216	(477)
2.4 m (8 ft) Push Steel Edge	All below	176	(389)
3 m (10 ft) Push Steel Edge	All below	197	(434)
3.6 m (12 ft) Push Steel Edge	All below	216	(477)

Skid Steer, Multi Terrain and Compact Track Loaders						
216B3	236D	246D	259D	272D2 XHP	287D	297D2 XHP
226D	239D	249D	262D	277D	289D	299D2
232D	242D	257D	272D2	279D	297D2	299D2 XHP

STUMP GRINDERS



Make stump removal simple.

Engineered for exceptional maneuverability, Cat stump grinders are ideal for removing multiple stumps in small areas. We offer standard and high-flow models to best match your application. And our cutting wheels bear bolt-on carbide teeth for maximum wood-cutting performance and efficiency.

Specifications

Attachment Models	Machine Models	Width		Length	
		mm	(in)	mm	(in)
SG16B	All below	1175	(46)	1737	(69)
SG18B	All D Series	1175	(46)	1737	(69)

Skid Steer, Multi Terrain and Compact Track Loaders						
216B3	236D	246D	259D	272D2 XHP	287D	297D2 XHP
226D	239D	249D	262D	277D	289D	299D2
232D	242D	257D	272D2	279D	297D2	299D2 XHP

TILLERS



Break apart densely packed dirt.

Cat tillers feature tungsten carbide tines, each hard-faced and double-edged, to effectively churn compacted soil. Select from three settings for a range of tilling depths, depending on your application.

Specifications

Attachment Models	Machine Models	Width		Working Depth	
		mm	(in)	mm	(in)
LT13B	All below	1788	(71)	25-152	(1-6)
LT18B	246D-299D2 XHP	2271	(90)	25-152	(1-6)

Skid Steer, Multi Terrain and Compact Track Loaders						
216B3	236D	246D	259D	272D2 XHP	287D	297D2 XHP
226D	239D	249D	262D	277D	289D	299D2
232D	242D	257D	272D2	279D	297D2	299D2 XHP

TRENCHERS



Cut through compacted soil.

Cat trenchers were engineered to cut narrow, straight-lined trenches. Our anti-backflex chain improves attachment durability in all soil types and our grease ram makes it easy to adjust chain tension.

Specifications

Attachment Models	Machine Models	Overall Width		Boom Length	
		mm	(in)	mm	(in)
T6B	All below	1426	(56)	914	(36)
T9B	All below	1901	(75)	1219	(48)
T15B	All D Series	1901	(75)	1524	(60)

Skid Steer, Multi Terrain and Compact Track Loaders						
216B3	236D	246D	259D	272D2 XHP	287D	297D2 XHP
226D	239D	249D	262D	277D	289D	299D2
232D	242D	257D	272D2	279D	297D2	299D2 XHP

VIBRATORY DRUM COMPACTORS



Swiftly smooth surfaces.

Before pouring concrete or laying asphalt, smooth foundational surfaces with the Cat vibratory drum compactor. Ideal for compacting soil, sand or gravel as well as compressing asphalt patch work, our compactors are often used by general contractors and utility contractors in residential, commercial and industrial applications.

Specifications

Attachment Models	Machine Models	Drum Width		Dynamic Force	
		mm	(in)	kg	(lb)
CV16B	All below	1676	(66)	5399	(11903)
CV18B	246D, 262D-299D2 XHP	1854	(73)	5399	(11903)

Skid Steer, Multi Terrain and Compact Track Loaders						
216B3	236D	246D	259D	272D2 XHP	287D	297D2 XHP
226D	239D	249D	262D	277D	289D	299D2
232D	242D	257D	272D2	279D	297D2	299D2 XHP

VIBRATORY PLATE COMPACTORS



Pack with power.

Actually cover more ground with our vibratory plate compactor's large surface and pack soil faster with its high-power pulses. We've even built in flexible isolators to guard against excessive vibrations.

Specifications

Attachment Model	Machine Models	Impulse Force			Base Plate Width	
		kN	lbf	Cycles/min	mm	(in)
CVP16	All below*	16	(3650)	2200	305	(12)

*Compatible with BH150 and BH160 backhoe arm models — see page 5.

Skid Steer, Multi Terrain and Compact Track Loaders						
216B3	236D	246D	259D	272D2 XHP	287D	297D2 XHP
226D	239D	249D	262D	277D	289D	299D2
232D	242D	257D	272D2	279D	297D2	299D2 XHP

WHEEL SAWS



Cut and trench tough surfaces.

Cat wheel saws can penetrate hard or compact surfaces like asphalt, reinforced concrete, rocky soil or frozen ground. They’re ideal for road and utility trenching applications. Hydraulic side-shift and depth control make operating easy. And our deflector plates remove debris from the machine’s path for a smooth operation.

Specifications

Attachment Models	Machine Models	Wheel Width		Number of Bits
		mm	(in)	
SW345B	239D, 246D-299D2 XHP	80	(3)	64
SW360B	262D-299D2 XHP	80/160/200	(3/6/8)	70/96/96
SW380B	272D-299D2 XHP	250	(10)	72
SW460B	272D2 XHP, 297D2 XHP, 299D2 XHP	80/160/200	(3/6/8)	70/96/96
SW480B	272D2 XHP, 297D2 XHP, 299D2 XHP	250	(10)	72

Skid Steer, Multi Terrain and Compact Track Loaders

216B3	236D	246D	259D	272D2 XHP	287D	297D2 XHP
226D	239D	249D	262D	277D	289D	299D2
232D	242D	257D	272D2	279D	297D2	299D2 XHP

WORK WITHOUT WORRY.

We back our attachments with a one-year warranty and ongoing Cat dealer support. It’s another way we’re helping protect what you rely on.



QUICK REFERENCE

Find attachments made for your work.

	Augers	Backhoes	Bale Spears	Blades	Brooms	Brushcutters		Buckets	Cold Planers	Forks	Hammers	Material Handling Arms	Mulchers	Rakes
Site Prep and Demolition		x		x		x		x		x	x	x	x	x
Concrete Prep and Flatwork								x	x	x		x		
Material Handling			x					x		x		x		
Excavation and Earth Moving	x	x		x				x						
Trenching and Utilities	x	x						x		x		x		
Finishing and Site Clean-Up					x	x		x		x	x	x	x	x
Snow Removal					x			x						

	Shears	Snow Blowers	Snow Plows	Straight Snow Pushes	Stump Grinders		Tillers	Trenchers	Vibratory Drum Compactors	Vibratory Plate Compactors	Wheel Saws
Site Prep and Demolition	x				x		x				
Concrete Prep and Flatwork									x	x	x
Material Handling							x				
Excavation and Earth Moving											
Trenching and Utilities								x	x		x
Finishing and Site Clean-Up					x						
Snow Removal		x	x	x							

QUICK REFERENCE (CONTINUED)

Find attachments made for your machine.

Machine Models	Augers			Backhoes		Bale Spears		Blades		Brooms				
	A14B	A19B	A26B	BH150	BH160	Single Tine	Dual Tine	Angle	Dozer	BA118C Angle	BP115C Pickup	BP118C Pickup	BU115 Utility	BU118 Utility
216B3	x	x		x		x	x	x	x	x	x		x	
226D	x	x	x	x		x	x	x	x	x	x		x	
232D	x	x	x	x		x	x	x	x	x	x		x	
236D	x	x	x	x		x	x	x	x	x	x	x	x	x
239D	x	x	x	x		x	x	x	x	x	x	x	x	x
242D	x	x	x	x		x	x	x	x	x	x	x	x	x
246D	x	x	x	x	x	x	x	x	x	x	x	x	x	x
249D	x	x	x	x		x	x	x	x	x	x	x	x	x
257D	x	x	x	x		x	x	x	x	x	x	x	x	x
259D	x	x	x	x		x	x	x	x	x	x	x	x	x
262D	x	x	x	x	x	x	x	x	x	x	x	x	x	x
272D2	x	x	x	x	x	x	x	x	x	x	x	x	x	x
272D2 XHP	x	x	x	x	x	x	x	x	x	x	x	x	x	x
277D	x	x	x	x	x	x	x	x	x	x	x	x	x	x
279D	x	x	x	x	x	x	x	x	x	x	x	x	x	x
287D	x	x	x	x	x	x	x	x	x	x	x	x	x	x
289D	x	x	x	x	x	x	x	x	x	x	x	x	x	x
297D2	x	x	x	x	x	x	x	x	x	x	x	x	x	x
297D2 XHP	x	x	x	x	x	x	x	x	x	x	x	x	x	x
299D2	x	x	x	x	x	x	x	x	x	x	x	x	x	x
299D2 XHP	x	x	x	x	x	x	x	x	x	x	x	x	x	x

Brushcutters					Buckets							
BR160	BR166	BR172	BR272	BR378	Dirt	General Purpose	Light Material	Material Handling	Multi-Purpose	Utility	Industrial Grapple	Utility Grapple
x	x	x			x	x	x	x	x	x	x	x
x			x		x	x	x	x	x	x	x	x
x			x		x	x	x	x	x	x	x	x
	x	x			x	x	x	x	x	x	x	x
x			x		x	x	x	x	x	x	x	x
	x	x			x	x	x	x	x	x	x	x
	x	x		x	x	x	x	x	x	x	x	x
x			x		x	x	x	x	x	x	x	x
	x	x			x	x	x	x	x	x	x	x
	x	x		x	x	x	x	x	x	x	x	x
	x	x			x	x	x	x	x	x	x	x
	x	x		x	x	x	x	x	x	x	x	x
	x	x			x	x	x	x	x	x	x	x
	x	x		x	x	x	x	x	x	x	x	x
	x	x			x	x	x	x	x	x	x	x
	x	x		x	x	x	x	x	x	x	x	x

QUICK REFERENCE (CONTINUED)

	Cold Planers								Forks				Hammers		Material Handling Arms	Mulchers						Rakes						
Machine Models	PC104B	PC205B	PC305B	PC306B	PC306B XD	PC310B	PC310B XD	PC408B	PC412B	Pallet	Utility	Utility Grapple	Industrial Grapple	H55E*/H55Es		H65E*/H65Es	Fixed Length	HM112C	HM115C	HM215C	HM315C	HM415C	HM418C	Industrial Grapple	Landscape LR15B	Landscape LR18B	Power Box PR172	Power Box PR184
216B3	X	X								X	X	X	X	X	X		X						X	X		X	X	X
226D	X	X	X	X						X	X	X	X	X	X		X						X	X		X	X	X
232D	X	X	X	X						X	X	X	X	X	X		X						X	X		X	X	X
236D	X	X	X	X						X	X	X	X	X	X		X						X	X		X	X	X
239D	X	X	X	X						X	X	X	X	X	X		X						X	X		X	X	X
242D	X	X	X	X						X	X	X	X	X	X		X						X	X		X	X	X
246D	X	X	X	X			X			X	X	X	X	X	X		X						X	X		X	X	X
249D	X	X	X	X						X	X	X	X	X	X		X						X	X		X	X	X
257D	X	X	X	X						X	X	X	X	X	X		X						X	X		X	X	X
259D	X	X	X	X						X	X	X	X	X	X		X						X	X		X	X	X
262D	X	X	X	X			X			X	X	X	X	X	X		X						X	X		X	X	X
272D2	X	X	X	X	X	X				X	X	X	X	X	X		X						X	X		X	X	X
272D2 XHP	X	X	X	X	X	X		X	X	X	X	X	X	X	X		X						X	X		X	X	X
277D	X	X	X	X	X	X				X	X	X	X	X	X		X						X	X		X	X	X
279D	X	X	X	X	X	X				X	X	X	X	X	X		X						X	X		X	X	X
287D	X	X	X	X	X	X	X			X	X	X	X	X	X		X						X	X		X	X	X
289D	X	X	X	X	X	X	X			X	X	X	X	X	X		X						X	X		X	X	X
297D2	X	X	X	X	X	X	X			X	X	X	X	X	X		X						X	X		X	X	X
297D2 XHP	X	X	X	X	X	X	X	X	X	X	X	X	X	X	X		X						X	X		X	X	X
299D2	X	X	X	X	X	X	X			X	X	X	X	X	X		X						X	X		X	X	X
299D2 XHP	X	X	X	X	X	X	X	X	X	X	X	X	X	X	X		X						X	X		X	X	X

*Flat top and pin-on models available

QUICK REFERENCE (CONTINUED)

	Shears	Snow Blowers					Snow Plows					Straight Snow Pushes						Stump Grinders		Tillers	
Machine Models	S305	SR117	SR118	SR121	SR318	SR321	1.8 m (6 ft) Plow	2.1 m (7 ft) Plow	2.4 m (8 ft) Plow	2.7 m (9 ft) Plow	3 m (10 ft) Plow	2.4 m (8 ft) Push Rubber Edge	3 m (10 ft) Push Rubber Edge	3.6 m (12 ft) Push Rubber Edge	2.4 m (8 ft) Push Steel Edge	3 m (10 ft) Push Steel Edge	3.6 m (12 ft) Push Steel Edge	SG16B	SG18B	LT13B	LT18B
216B3		X	X	X			X	X	X	X	X	X	X	X	X	X	X	X		X	
226D		X			X	X	X	X	X	X	X	X	X	X	X	X	X	X	X	X	
232D		X			X	X	X	X	X	X	X	X	X	X	X	X	X	X	X	X	
236D	X		X	X	X	X	X	X	X	X	X	X	X	X	X	X	X	X	X	X	
239D	X	X			X	X	X	X	X	X	X	X	X	X	X	X	X	X	X	X	
242D	X		X	X	X	X	X	X	X	X	X	X	X	X	X	X	X	X	X	X	
246D	X		X	X	X	X	X	X	X	X	X	X	X	X	X	X	X	X	X	X	
249D	X	X			X	X	X	X	X	X	X	X	X	X	X	X	X	X	X	X	
257D	X		X	X	X	X	X	X	X	X	X	X	X	X	X	X	X	X	X	X	
259D	X		X	X	X	X	X	X	X	X	X	X	X	X	X	X	X	X	X	X	
262D	X		X	X	X	X	X	X	X	X	X	X	X	X	X	X	X	X	X	X	
272D2	X		X	X	X	X	X	X	X	X	X	X	X	X	X	X	X	X	X	X	
272D2 XHP	X		X	X	X	X	X	X	X	X	X	X	X	X	X	X	X	X	X	X	
277D	X		X	X	X	X	X	X	X	X	X	X	X	X	X	X	X	X	X	X	
279D	X		X	X	X	X	X	X	X	X	X	X	X	X	X	X	X	X	X	X	
287D	X		X	X	X	X	X	X	X	X	X	X	X	X	X	X	X	X	X	X	
289D	X		X	X	X	X	X	X	X	X	X	X	X	X	X	X	X	X	X	X	
297D2	X		X	X	X	X	X	X	X	X	X	X	X	X	X	X	X	X	X	X	
297D2 XHP	X		X	X	X	X	X	X	X	X	X	X	X	X	X	X	X	X	X	X	
299D2	X		X	X	X	X	X	X	X	X	X	X	X	X	X	X	X	X	X	X	
299D2 XHP	X		X	X	X	X	X	X	X	X	X	X	X	X	X	X	X	X	X	X	

*Compatible with BH150 and BH160 backhoe arm attachments – see page 5.

QUICK REFERENCE (CONTINUED)

	Trenchers			Vibratory Drum Compactors		Vibratory Plate Compactors*	Wheel Saws				
Machine Models	T6B	T9B	T15B	CV16B	CV18B	CVP16	SW345B	SW360B	SW380B	SW460B	SW480B
216B3	X	X		X		X					
226D	X	X	X	X		X					
232D	X	X	X	X		X					
236D	X	X	X	X		X					
239D	X	X	X	X		X	X				
242D	X	X	X	X		X					
246D	X	X	X	X	X	X	X				
249D	X	X	X	X		X	X				
257D	X	X	X	X		X	X				
259D	X	X	X	X		X	X				
262D	X	X	X	X	X	X	X	X			
272D2	X	X	X	X	X	X	X	X	X		
272D2 XHP	X	X	X	X	X	X	X	X	X	X	X
277D	X	X	X	X	X	X	X	X	X		
279D	X	X	X	X	X	X	X	X	X		
287D	X	X	X	X	X	X	X	X	X		
289D	X	X	X	X	X	X	X	X	X		
297D2	X	X	X	X	X	X	X	X	X		
297D2 XHP	X	X	X	X	X	X	X	X	X	X	X
299D2	X	X	X	X	X	X	X	X	X		
299D2 XHP	X	X	X	X	X	X	X	X	X	X	X

*Compatible with BH150 and BH160 backhoe arm attachments – see page 5.

