

D5R2

Track-Type Tractor



Engine

Engine Model	Cat® C7.1 ACERT™		
Net Power (Maximum)			
ISO 9249/SAE J1349	130 kW	174 hp	
ISO 9249/SAE J1349 (DIN)		177 hp	

Weights

Operating Weight – XL (VPAT)	16 032 kg	35,344 lb
Operating Weight – XL (SU)	16 119 kg	35,536 lb
Operating Weight – XL (A)	17 003 kg	37,485 lb
Operating Weight – LGP (VPAT)	18 504 kg	40,794 lb

D5R2 Features

Ease of Operation

An updated cab provides greater visibility and comfort to help your operators work more productively. Single twist tiller control and automatic machine settings help reduce operator effort for greater efficiency. A Variable Power Angle Tilt (VPAT) blade option with electro-hydraulic controls offers greater versatility and easier transport.

Performance

A Cat C7.1 ACERT engine gives you the horsepower you need to doze through tough conditions. The two-pump hydraulic system means you can count on simultaneous blade response and steering performance for greater precision and maneuverability. Differential Steering gives you exceptional turning, even with a full blade load.

Durability

Caterpillar elevated sprocket design offers added durability and optimum machine balance. Forestry, Waste Handling, and Cold Weather arrangements offer added features and protection to take on especially harsh environments.



Contents

Power and Performance.....3

Operator Environment.....4

Equipped for the Job6

Integrated Technologies.....8

Special Arrangements9

Serviceability and Customer Support.....10

Specifications.....12

Standard Equipment.....17

Optional Equipment.....18

Notes.....19

The Cat D5R2 dozer comes to your job site backed by more than 100 years of track-type tractor experience. The D5R2 combines the power you need for earthmoving applications with the precision and maneuverability you want for fine grading. Well known Cat tractor features like differential steering and elevated sprocket are joined with a new cab and optional machine control features to give you world-class performance and ease of operation.



Power and Performance

Designed to get the job done



Engine

Cat C7.1 ACERT engine optimizes power and fuel efficiency while reducing emissions. Bio-diesel compatible up to B-20.

Planetary Power Shift Transmission

Smoother shifting, electronically controlled transmission features three speeds forward/three speeds reverse. Optional Auto Shift enables two additional ground speeds for five working speeds forward and four working speeds reverse. Large diameter, high capacity, oil-cooled clutches provide higher torque capacity and increase service life. Modular components offer easy service access.



Differential Steering

Differential Steering increases the speed of one track while slowing the other for exceptional turning, even with a full blade load. This provides greater maneuverability and faster cycle times. You also get better load capacity, power and speed control in soft underfoot conditions.

Responsive Hydraulics

Dedicated implement and steering pumps mean you can count on simultaneous blade response and steering performance. This gives you precision and maneuverability, especially beneficial for working in close quarters or land clearing. Field-proven system senses load and continuously adjusts implement hydraulic power for maximum efficiency.

Cooling System

Updated aluminum bar plate cooling system is more efficient than the previous model and gives you better cooling capability in high ambient conditions.



Operator Environment

Comfort and productivity

Updated cab, with an Integrated Roll Over Protection Structure (ROPS) and 15° offset seat, gives operators greater all around visibility to enhance safety and productivity. Quiet interior, with improved pressurization, helps keep dust out. Cab access/egress is easier too. The standard suspension seat offers eight operator adjustments and adjustable armrests for greater comfort. The seat also features an integrated, retractable 76 mm wide (3 in) seat belt for enhanced safety.

The redesigned instrument panel has easy-to-read gauges showing fuel level and engine speed, as well as temperature levels for power train oil, hydraulic oil and engine coolant.

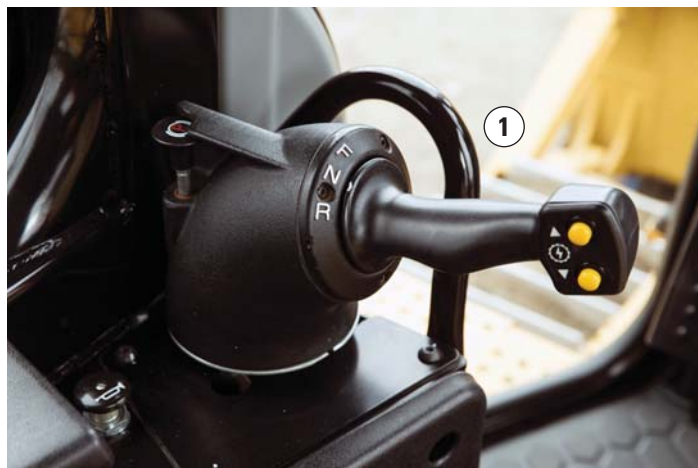
The updated Cat Electronic Monitoring System has three levels of machine monitoring and warnings. Lights and/or alarms keep operators informed about engine and power train conditions, as well as water in the fuel filter or hydraulic filter restriction.



Implement and Steering Controls

D5R2 controls are ergonomically designed for low-effort and ease of operation.

- The operator uses a single handle control to perform all directional changes and gear selection for ease of operation.
- The tiller bar control allows the operator to work more precisely in close areas around structures, obstacles on the site and other machines.
- Change gears up or down with the touch of a button.
- Pilot hydraulic implement controls reduce operator effort and offer more consistent, precise and responsive operation.
- Engine throttle speed is controlled by simply using a rotary dial.
- Setting the engine throttle dial to the optional Auto Shift mode gives you two additional ground speeds. Auto Shift enables the machine to automatically down shift to the most efficient gear based on load. This helps you save fuel and increase productivity.
- Optional bi-directional control allows the operator to dial to preselected forward/reverse gears for reduced operator effort and improved efficiency.
- Implement Lock-Out prevents inadvertent operation of hydraulic attachments.



- 1) Tiller bar
- 2) Standard engine throttle control
- 3) Engine throttle control with optional Auto Shift
- 4) Optional bi-directional control
- 5) Implement lockout

Equipped for the Job

Tough from the inside out



Undercarriage

The elevated sprocket design helps protect major components from harsh impacts and provides a modular design for convenient service. The operator has excellent sight lines and the center of gravity remains low, for outstanding stability, balance and traction.

Heavy Duty undercarriage, with lifetime lubricated track/carrier rollers and idlers, is standard on the D5R2. The components are designed for extended wear life in abrasive or high impact conditions like forestry, side slopes or working in rocky terrain.

A broad choice of track shoe designs and widths help you further optimize your machine for performance and longer life.

Structures

The foundation of every Cat dozer is a rugged mainframe built to absorb high impact shock loads and twisting forces. Castings add strength to the main case and equalizer bar saddle. A modular design allows easy installation and removal of major components for service/rebuild.

The pinned pivot shafts connect the mainframe and roller frames for independent oscillation. This provides strength and excellent ground clearance.





Bulldozers

L-shaped push arms give you an advantage over diagonal brace designs by bringing the blade closer to the machine for better balance, maneuverability and blade penetration. Lateral stability and better cylinder positions offer constant pryout capability regardless of blade height. The trunnion joint requires no adjustments to keep the blade tight.

Dozer blades are manufactured from high tensile strength steel, with a robust multi-cell design to stand up to the most severe applications. The moldboard is highly abrasion resistant to prevent wear-through. Hardened bolt-on cutting edges and end bits give you better penetration and can be rotated and/or replaced for even longer blade life. Semi-Universal (SU) and Angle (A) blades are available, as well as special blades for landfill and land clearing applications.

Variable Power Angle Tilt (VPAT) Blade

Variable Power Angle Tilt (VPAT) blade with electro-hydraulic controls (available mid-2016) allows you to hydraulically adjust lift, angle and tilt for more precise results. VPAT blades offer greater versatility and can be angled for easier transport.

Rear Implements

- Three-shank fixed parallelogram-type ripper with curved or straight ripper shanks.
- Drawbar for towing and recovery.
- Winch.

Please consult your Cat dealer for available options to best suit the types of work you do.



Integrated Technologies

Monitor, manage and enhance job site operations



LINK Technologies

LINK technologies, like Product Link™*, are deeply integrated into your machine and wirelessly communicate key information, including location, hours, fuel usage, idle time and event codes.

Product Link/VisionLink®*

Manage equipment with real-time data and performance information to help make timely, decisions that can boost job site efficiency and productivity, and lower costs. Analysis and scheduling tools help you track routine maintenance and plan for service procedures. And if a problem arises, operators can quickly assess the issue and take appropriate action to minimize service costs and downtime.

Whether you're in your office or on the job site, you can easily access data about your machine or fleet via the online VisionLink user interface from your computer or mobile device.

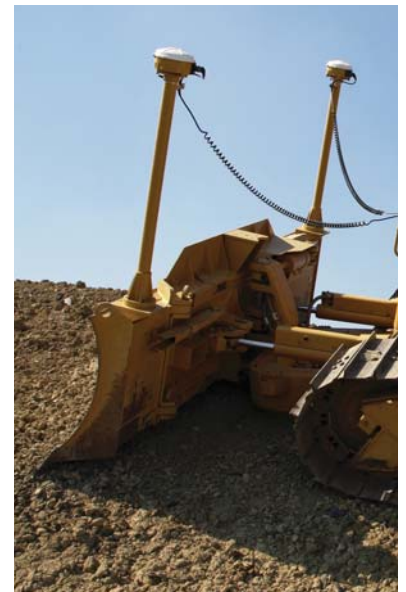
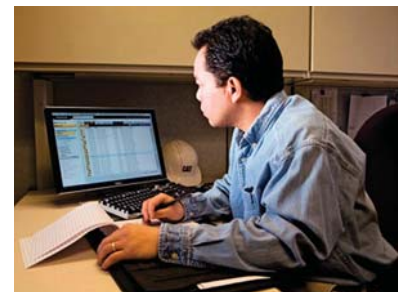
**Product Link/VisionLink mobile not available in all areas. Please consult your Cat dealer.*

GRADE Technologies

Grade technologies combine digital design data and in-cab guidance to help you reach target grade quickly and accurately, with minimal staking and checking. That means you'll be more productive, complete jobs faster, in fewer passes, using less fuel, at a lower cost.

Cat AccuGrade™

AccuGrade is an optional dealer-installed grade control system that provides automated blade slope and elevation control, improving productivity and accuracy by up to 50 percent over conventional methods. Real-time in-cab guidance indicates precisely where to work and how much to cut or fill, helping operators work more confidently and get to grade faster. Choose from 2D laser systems for flat planes and slopes, and 3D satellite (GNSS) for large complex designs or total station (UTS) control for fine and finish grading. 3D systems eliminate staking, checking, and ground crews, making the job site safer and more cost effective.



Special Arrangements

Purpose-built for performance



Your D5R2 can be specially equipped from the factory to perform in the toughest applications.

Forestry Arrangement

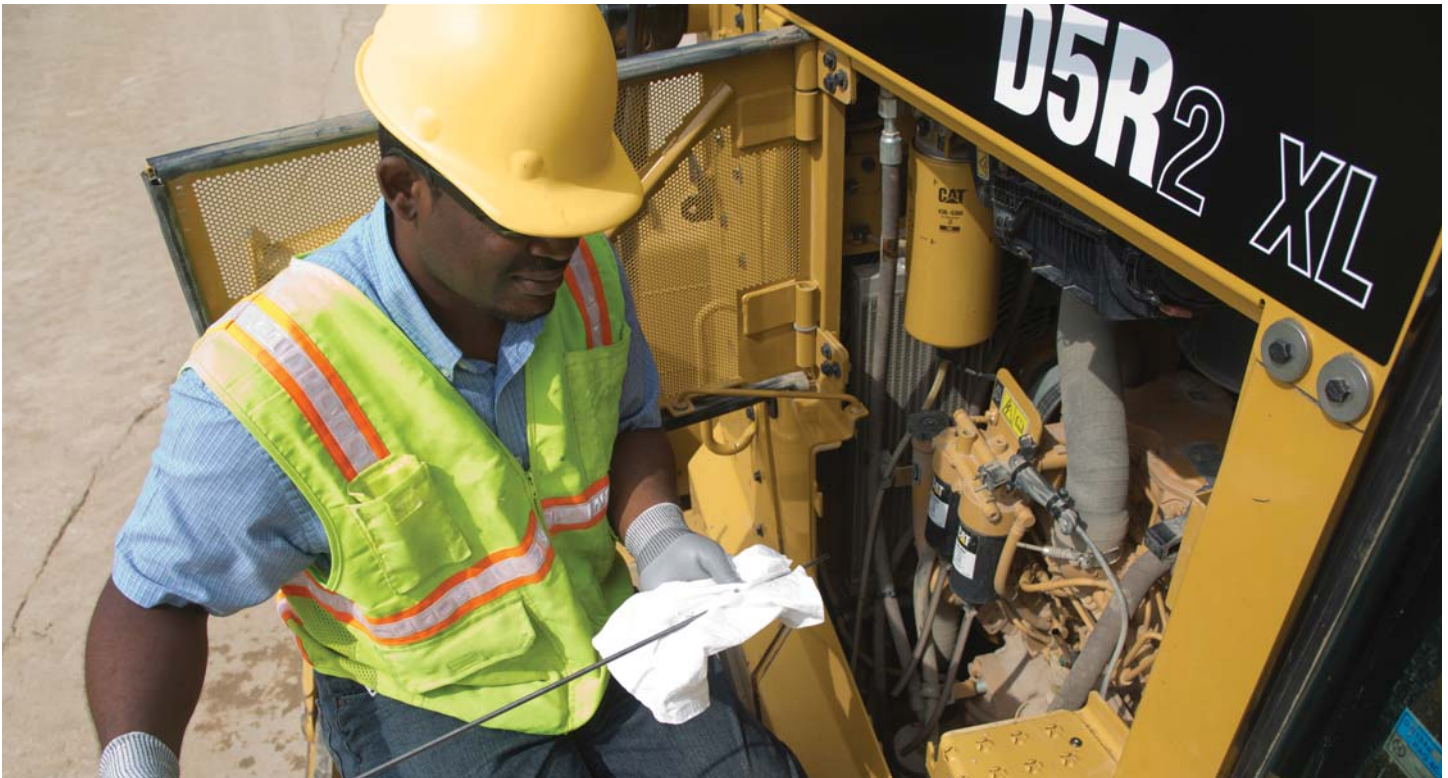
- Optional sweeps help protect the cab, top and sides of the machine.
- Optional screens give added impact protection to all cab windows and open canopy (ISO 8084).
- Additional guarding helps protect machine structures from heavy debris impact.
- The cooling system is designed for high debris environments, with easy access for cleanout.

Cold Weather Arrangement (available by custom order)

- Reversible fan allows manual adjustment of air flow through the radiator.
- Heavy duty battery and alternator for added cold start capability.
- Solid hood for added protection against snow and ice.
- Arctic cab with dual pane glass, as well as optional heated suspension seat, offer greater operator comfort in extreme cold.
- Oils and final drive seals are designed to stand up to cold conditions.

Waste Handler/Landfill Arrangement (available by custom order)

- Specialized guarding, striker bars and seals help protect the machine from impact and airborne/wrapping debris.
- The engine cooling system is designed for high debris environments and easy access for cleanout.
- Specialized air handling features help deliver cleaner air to the machine.
- Landfill blades and center-hole track shoes help you optimize your waste handler for the job.



Serviceability and Customer Support

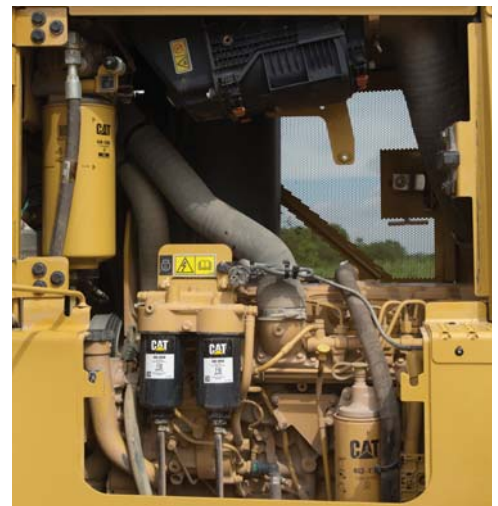
When uptime counts

Ease of Service

The D5R2 is designed for ease of repair and maintenance so you can spend less time on service and more time on the job.

Service points are grouped and sight gauges let you inspect fluid levels at a glance. Service point locations are consistent across Cat tractor models to help save you even more time. High efficiency fuel filters have water-in-fuel sensors to add to fuel system robustness.

Air conditioning condenser is now mounted externally, above the rear cab window, without adding to machine height. Heating/ventilation/air conditioning capability is increased, while improving engine cooling and serviceability.



Cat EMSolutions (Equipment Management Solutions)

Cat **EMSolutions** lets you take control of your fleet with a solution specific to your equipment management needs. Comprehensive equipment management – combined with the knowledge and expertise of your Cat dealer – can provide ways to help you achieve gains that go straight to your bottom line.

- Improve availability
- Reduce owning and operating costs
- Streamline maintenance practices
- Maximize equipment life
- Increase resale value

Consisting of five levels of support, from remote access to equipment data to complete, proactive management of your fleet, Cat **EMSolutions** allows you to choose the amount of support that's right for you.

Renowned Cat Dealer Support

Knowledgeable Cat dealers have a global reputation for providing outstanding sales and service. When you need repairs, Cat dealers and our unmatched Caterpillar distribution network excel at getting you the right parts you need quickly. Maximize your equipment investment with a Customer Support Agreement tailored to meet your business needs. Take advantage of preventive maintenance programs like Custom Track Service, Scheduled Oil Sampling (S-O-SSM) analysis, and guaranteed maintenance contracts. Cat dealers can even help you with operator training to help boost your profits.

Your Cat dealer can also help you maximize your equipment investment with services like Cat Reman* parts and Cat Certified Rebuilds. Remanufactured parts offer you the same warranty and reliability as new parts at a fraction of the cost. A Certified Rebuild gives a “second life” for your machine, incorporating the latest engineering updates so you end up with a like-new dozer and a new machine warranty. Caterpillar strives to provide customers the lowest owning and operating costs over the life of their machine.

**Please contact your Cat dealer for Reman availability.*



D5R2 Track-Type Tractor Specifications

Engine – Standard

Engine Model	Cat C7.1 ACERT	
Emissions	Meets China Nonroad Stage III emission standards and the equivalent of U.S. EPA Tier 3 and EU Stage IIIA emission standards.	
Engine Power (Maximum)		
SAE J1995	141 kW	189 hp
ISO 14396	139 kW	187 hp
ISO 14396 (DIN)		189 hp
Engine Speed	1,700 rpm	
Net Power (Rated)		
ISO 9249/SAE J1349	114 kW	153 hp
ISO 9249/SAE J1349 (DIN)		155 hp
80/1269/EEC	114 kW	153 hp
Engine Speed	2,200 rpm	
Net Power (Maximum)		
ISO 9249/SAE J1349	130 kW	174 hp
ISO 9249/SAE J1349 (DIN)		177 hp
80/1269/EEC	130 kW	174 hp
Engine Speed	1,700 rpm	
Bore	105 mm	4.1 in
Stroke	135 mm	5.3 in
Displacement	7.1 L	433.3 in ³

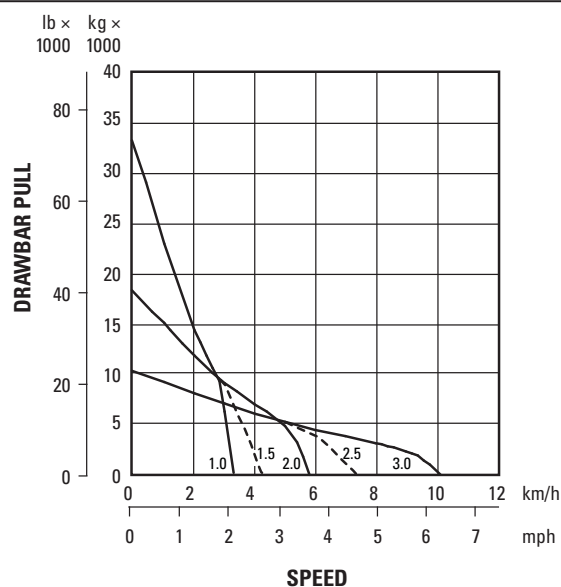
- Net power advertised is the power available at the flywheel when engine is equipped with a fan at maximum speed, air cleaner, muffler and alternator, air conditioner compressor at full load.
- No deratings required up to 3000 m (9,840 ft) altitude. Automatic derating occurs after 3000 m (9,840 ft).

Transmission

1.0 Forward	3.3 km/h	2.0 mph
1.5 Forward*	4.2 km/h	2.6 mph
2.0 Forward	5.8 km/h	3.6 mph
2.5 Forward*	7.3 km/h	4.5 mph
3.0 Forward	10.1 km/h	6.2 mph
1.0 Reverse	4.2 km/h	2.6 mph
1.5 Reverse*	5.2 km/h	3.2 mph
2.0 Reverse	7.3 km/h	4.5 mph
2.5 Reverse*	7.3 km/h	4.5 mph
3.0 Reverse	12.5 km/h	7.7 mph

*With optional Auto-Shift selected

Drawbar – D5R2 XL and LGP



KEY

- 1.0 – 1st Gear
- 1.5 – 1st Gear, additional speed with Auto Shift engaged
- 2.0 – 2nd Gear
- 2.5 – 2nd Gear, additional speed with Auto Shift engaged
- 3.0 – 3rd Gear

NOTE: Usable pull will depend upon weight and traction of equipped tractor.

D5R2 Track-Type Tractor Specifications

Service Refill Capacities

Fuel Tank	299 L	79.0 gal
Cooling System	30 L	12.7 gal
Engine Crankcase	15.5 L	4.1 gal
Power Train	160 L	44.9 gal
Final Drives (each)	7 L	2.2 gal
Hydraulic Tank	29.5 L	7.8 gal

Weights

Operating		
D5R2 XL (VPAT) ⁽¹⁾	16 032 kg	35,344 lb
D5R2 XL (SU) ⁽²⁾	16 119 kg	35,536 lb
D5R2 XL (A) ⁽³⁾	17 003 kg	37,485 lb
D5R2 LGP (VPAT) ⁽²⁾	18 504 kg	40,794 lb
Shipping		
D5R2 XL (VPAT)	14 714 kg	32,438 lb
D5R2 XL (SU)	13 862 kg	30,560 lb
D5R2 XL (A)	15 351 kg	33,843 lb
D5R2 LGP (VPAT)	16 999 kg	37,476 lb

⁽¹⁾Operating weight includes lubricants, coolant, full fuel tank, standard track, ROPS cab, air conditioner, hydraulic controls, blade, drawbar and operator.

⁽²⁾Operating weight includes lubricants, coolant, full fuel tank, standard track, ROPS cab, air conditioner, hydraulic controls, blade, drawbar, and operator.

⁽³⁾Operating weight includes lubricants, coolant, full fuel tank, standard track, ROPS canopy, hydraulic control, blade, drawbar, sweeps, screens, guards and operator.

• Shipping weight includes lubricants, coolant, 5% fuel tank, standard track, ROPS cab, air conditioner, hydraulic controls and blade removed. (Includes inside mounted C-frame for VPAT-blade and outside mounted C-frame or A-blade equipped machines.)

Undercarriage – XL

Shoe Type	Extreme Service	
Width of Shoe	560 mm	22.0 in
Grouser Height	57 mm	2.2 in
Shoes per Side	40	
Track Rollers per Side	7	
Track Pitch	190 mm	7.5 in
Ground Clearance	419 mm	16.5 in
Track Gauge	1890 mm	74.4 in
Length of Track on Ground	2587 mm	101.8 in
Ground Contact Area	2.9 m ²	4,496.0 in ²
Ground Pressure (ISO 16754)		
VPAT-Blade	54.2 kPa	7.8 psi
SU-Blade	54.5 kPa	7.9 psi
A-Blade	57.5 kPa	8.3 psi

Undercarriage – LGP

Shoe Type	Moderate Service	
Width of Shoe	840 mm	33.1 in
Grouser Height	66 mm	2.6 in
Shoes per Side	46	
Track Rollers per Side	8	
Track Pitch	190 mm	7.5 in
Ground Clearance	510 mm	20.1 in
Track Gauge	2160 mm	85.0 in
Length of Track on Ground	3113 mm	122.6 in
Ground Contact Area	5.23 m ²	8,107 in ²
Ground Pressure (ISO 16754)		
VPAT-Blade	34.7 kPa	5.0 psi

D5R2 Track-Type Tractor Specifications

Rippers

Type	Fixed Parallelogram	
Number of Pockets	3 – Multi-shank, XL	
Overall Beam Width	2202 mm	86.7 in
Weight with Standard Shanks	1400 kg	3,444 lb
Maximum Penetration	475 mm	14 in
Maximum Penetration Force	52 kN	11,600 lbf
Pry-out Force	125.8 kN	28,280 lbf

Hydraulic Controls

Pump Type – Implements	Variable Displacement Piston	
Pump Capacity	6900 kPa	1,001 psi
RPM at Rated Speed	2,200 rpm	
Pump Output	135 L/min	35.7 gal/min
Bulldozer Lift Cylinder Flow	132 L/min	34.9 gal/min
Bulldozer Tilt Cylinder Flow	100 L/min	26.4 gal/min
Ripper Cylinder Flow	125 L/min	33.0 gal/min
Maximum Operating Pressures		
Bulldozer Lift Cylinder	26 500 kPa	3,843 psi
Bulldozer Tilt Cylinder	23 500 kPa	3,408 psi
Ripper Lift Cylinder	35 000 kPa	5,076 psi
Steering	45 000 kPa	6,527 psi
Main Relief Valve		
Pressure Setting (Non-VPAT)	21 800 kPa	3,162 psi
Pressure Setting (VPAT)	23 400 kPa	3,394 psi

Standards

ROPS/FOPS	ROPS (Rollover Protective Structure) offered by Caterpillar meets ROPS criteria ISO 3471:2008 FOPS (Falling Object Protective Structure) meets FOPS criteria ISO 3449:2005
-----------	---

Brakes	Brakes meet the standard SAE J/ISO 10265:2008
--------	---

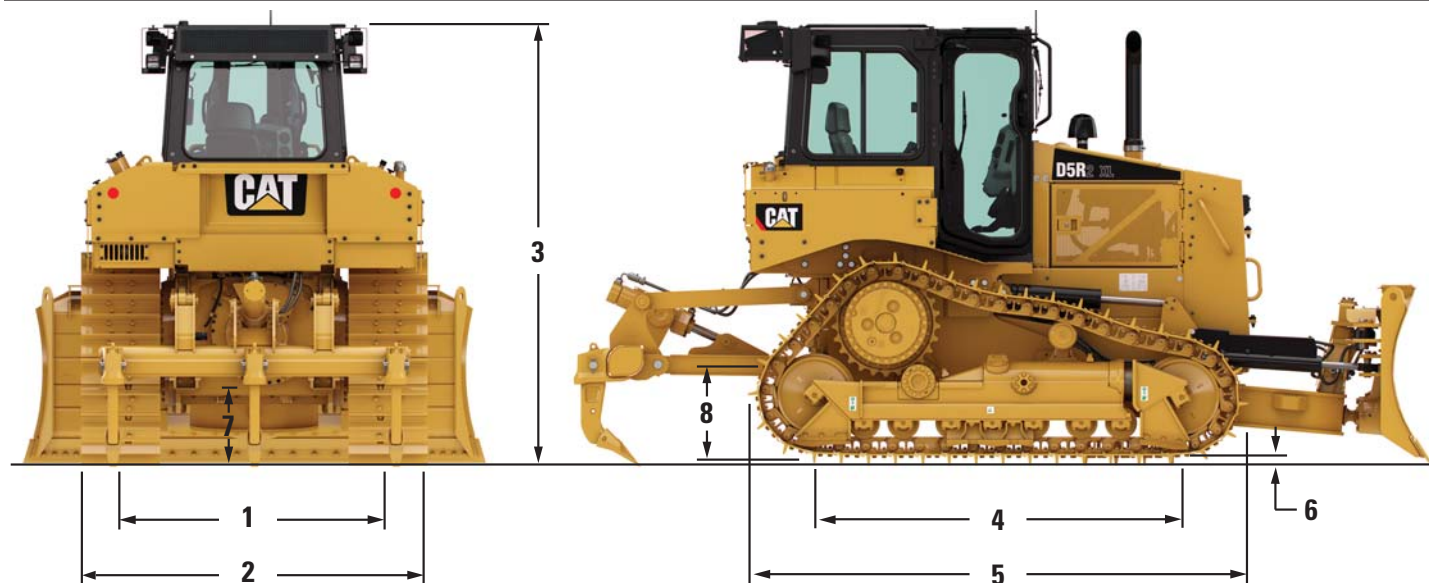
Cab	Meets appropriate standards as listed below
-----	---

- The operator sound exposure Leq (equivalent sound pressure level) measured according to the work cycle procedures specified in ANSI/SAE J116 OCT98 is 78 dB(A), for a cab by Caterpillar, when properly installed and maintained and tested with the doors and windows closed.
- Hearing protection may be needed when operating with an open operator station and cab (when not properly maintained for doors/windows open) for extended periods or in noisy environment(s).
- The exterior sound pressure level for the standard machine measured at a distance of 16 m (52.5 ft) radius according to the test procedures specific in ISO 6395, mid gear moving operation, is 109 dB(A).

D5R2 Track-Type Tractor Specifications

Dimensions

All dimensions are approximate.



	XL		LGP	
1 Tractor Gauge	1890 mm	74.4 in	2160 mm	85.0 in
2 Width of Tractor				
Over Trunnions	2640 mm	103.9 in	N/A	
Without Trunnions (standard shoe width)	2450 mm	96.5 in	3000 mm	118.1 in
3 Machine Height, from Tip of Grouser				
Exhaust Stack	3042 mm	119.8 in	3122 mm	122.9 in
ROPS (Cab or Canopy)	3055 mm	119.7 in	3135 mm	123.8 in
4 Length of Track on Ground	2587 mm	101.9 in	3092 mm	121.7 in
5 Length of Basic Tractor:				
Cab (non-VPAT)	3766 mm	148.3 in	N/A	
Cab (VPAT)	3696 mm	145.5 in	4027 mm	158.5 in
Canopy (non-VPAT)	3706 mm	145.9 in	N/A	
Canopy (VPAT)	3636 mm	143.1 in	4027 mm	158.5 in
With following attachments, add:				
SU – Blade	1170 mm	46.1 in	N/A	
A – Blade (straight)	1235 mm	48.6 in	N/A	
A – Blade (angled 25 degrees)	2075 mm	81.7 in	N/A	
VPAT – Blade (straight)	1195 mm	47.0 in	1250 mm	49.2 in
VPAT – Blade (angled 25 degrees)	1815 mm	71.5 in	2060 mm	81.1 in
Rear Drawbar	184 mm	7.2 in	100 mm	3.9 in
Multi-Shank Ripper (tip at ground level)	1230 mm	48.4 in	1140 mm	44.9 in
6 Grouser Bar Height	57 mm	2.2 in	66 mm	2.6 in
7 Ground Clearance – from Ground Face of Shoe	364 mm	14.3 in	444 mm	17.5 in
8 Drawbar Height (grouser tip to center of clevis)	614 mm	24.2 in	703 mm	27.7 in

D5R2 Track-Type Tractor Specifications

Bulldozers

Blade	5SU XL		5A XL		5VPAT XL		5VPAT LGP	
Capacity (SAE J/ISO 9246)	4.28 m ³	5.6 yd ³	3.18 m ³	4.2 yd ³	3.31 m ³	4.3 yd ³	3.87 m ³	5.1 yd ³
Width (over end bits)	3154 mm	124.2 in	4165 mm	164.0 in	3272 mm	128.8 in	4082 mm	160.7 in
Height	1238 mm	48.7 in	1031 mm ⁽²⁾	40.6 in	1195 mm	47.0 in	1040 mm	40.9 in
Digging Depth	473 mm	18.6 in	505 mm	19.9 in	420 mm	21.2 in	500 mm	17.0 in
Ground Clearance	1076 mm	42.4 in	1140 mm	44.9 in	1067 mm	32.4 in	1052 mm	40.9 in
Maximum Tilt	665 mm	26.2 in	N/A		485 mm	19.6 in	585 mm	23.5 in
Weight ⁽¹⁾	1957 kg	4,349 lb	2573 kg ⁽³⁾	5,718 lb	2426 kg	5,391 lb	2852 kg	6,338 lb

⁽¹⁾ Does not include hydraulic controls but includes push-arm/C-frame, trunnions, blade tilt cylinder/brace (SU XL), braces (A XL) and angle/tilt cylinders (VPAT).

⁽²⁾ Brush rack will add 412 mm (16.2 in) to the height of A-Blade.

⁽³⁾ Add 152 kg (338 lb) for Land Clearing "Brush" Rack option.

Standard Equipment

Standard equipment may vary. Consult your Cat dealer for details.

TRACTOR CONFIGURATIONS

- D5R2 XL
- D5R2 LGP (Low Ground Pressure)

POWER TRAIN

- Cat 7.1 ACERT Turbocharged Direct Injection diesel engine
- 3000 m (9,843 ft) altitude operation capability without de-rating
- China Nonroad Stage III emission standards and the equivalent of Tier 3 and Stage IIIA emission standards
- Aluminum bar plate radiator (6.35 fins/in)
- Air cleaner, under-hood, with dust ejector
- Air filter with electronic service indicator
- Aluminum bar plate Air to Air After-Cooler (ATAAC)
- Coolant, extended life
- Differential Steering, electronically controlled
- Fan, blower, direct drive
- Final drives, 3-planet single reduction planetary
- Fuel filter with water in fuel sensor/indicator and secondary fuel filters
- Fuel priming pump, electric
- Muffler with mitered stack
- Parking brake, electronic
- Planetary transmission, electronic power shift 3F/3R speeds
- Torque converter

UNDERCARRIAGE

- Carrier rollers, lifetime lubricated
- Equalizer bar
- Guards, end track guiding
- Idlers, lifetime lubricated
- Pivot shafts, pinned
- Replaceable sprocket rim segments
- Track adjusters, hydraulic
- Track, heavy duty, sealed and lubricated
- Track rollers, lifetime lubricated
- Track roller frames, tubular

ELECTRICAL

- Alarm, backup
- Alternator (115 Amp)
- Batteries, two maintenance free 12V (24V system)
- Converter, 12V, 10 amp with one outlet
- Connector, diagnostic
- Electric start, 24V
- Glow plug starting aid
- Horn, forward warning
- Lights, halogen (four)

OPERATOR ENVIRONMENT

- Armrest, adjustable
- Decelerator pedal, suspended
- Differential steering tiller-bar control with soft touch button gear selection
- Cat monitoring system
 - Engine coolant temperature
 - Hydraulic temperature
 - Power train temperature
 - Fuel level
 - Engine speed, tachometer
 - Service hour meter
 - System warning lamps
- Enclosed cab, or open canopy, integrated ROPS
- Coat Hook
- Cup Holder
- Foot pads, dash mounted
- Hydraulic controls, pilot operated with electronic deactivation switch
- Mirror, rearview
- Seat, adjustable contour suspension
- Seat belt, retractable 76 mm (3 in)
- Service brake pedal, suspended
- Throttle switch, electronic rotary dial

OTHER STANDARD EQUIPMENT

- Cat Product Link ready
- Engine covers with perforated side enclosures
- Engine hood, solid
- Front pull device
- Guards, bottom
- Radiator door, louvered
- Mounting, lift cylinder
- Lift cylinders with lines
- Hydraulics, load sensing, dozer lift and tilt
- Oil cooler, hydraulic
- Sampling ports
 - Engine oil
 - Engine coolant
 - Hydraulic oil
- Vandalism protection
 - cap locks fitted to battery box and fuel tank drain
 - provision for cap locks for fluid compartments, battery compartment and engine side enclosures

D5R2 Optional Equipment

Optional Equipment

Optional equipment may vary. Consult your Cat dealer for details.

POWER TRAIN

- Auto-Shift with kick-down and 5F/5R ground speed selection.
- Drains, ecology, power train
- Fuel system, heated
- Heater, engine coolant, 240V
- Oil change system, high speed
- Precleaner, turbine with screen
- Radiator core protector
- Radiator fan, reversible (cold weather)

UNDERCARRIAGE

- Track guiding, center (XL and LGP)
- Track guiding, partial (XL)
- Track guiding, full length (XL)
- Track shoe, 560 mm (22.0 in), Moderate Service (XL)
- Track shoe, 600 mm (24 in), Moderate Service (XL)
- Track shoe, 600 mm (24 in), Extreme Service (XL)
- Track shoe, 600 mm (24 in), Extreme Service with trapezoidal hole (XL)
- Track shoe, 840 mm (33.1 in), Extreme Service (LGP)
- Track shoe, 840 mm (33.1 in), Extreme Service with trapezoidal hole (LGP)

ELECTRICAL

- Battery, heavy duty
- Lights, halogen (six)
- Lights, LED (six)
- Lights, halogen (four – sweep)

OPERATOR ENVIRONMENT

- Mirror, additional internal
- Screen, rear, cab or canopy
- Screens, side, cab or canopy
- Screens, door/front, cab or canopy
- Suspension seat, vinyl cover with 76 mm (3 in) retractable seat belt
- Suspension seat, cloth cover with 76 mm (3 in) retractable seat belt

TECHNOLOGY PRODUCTS

- Cat Product Link, satellite, Pro-Series
- Cat Product Link, cellular, Pro-Series

OTHER ATTACHMENTS

- Drawbar, rigid
- Hydraulics, lift/tilt/ripper
- Ripper, multi-shank, straight or curved shanks (three)
- Sound suppression, exterior

GUARDS

- Guard, bottom, heavy duty
- Guard, fuel tank
- Guards, land clearing
- Guard, radiator, heavy duty
- Guard, transmission
- Sweeps, forward protection

BULLDOZERS

- Angle, mechanical tilt (XL)
- Semi-Universal, hydraulic tilt (XL)
- Variable power angle and tilt (XL and LGP)

For more complete information on Cat products, dealer services, and industry solutions, visit us on the web at www.cat.com

AEHQ7789 (02-2016)

© 2016 Caterpillar
All rights reserved

Materials and specifications are subject to change without notice. Featured machines in photos may include additional equipment. See your Cat dealer for available options.

CAT, CATERPILLAR, SAFETY.CAT.COM, their respective logos, "Caterpillar Yellow" and the "Power Edge" trade dress, as well as corporate and product identity used herein, are trademarks of Caterpillar and may not be used without permission.

VisionLink is a trademark of Trimble Navigation Limited, registered in the United States and in other countries.

