



Prentice 2590 Track Feller Buncher



Built Better Than It Needs To Be

The Prentice Model 2590 FTS (Full Tail Swing) Feller Buncher was designed from the ground up for maximum productivity and efficiency under a wide variety of logging conditions. Reliability starts with a rugged undercarriage that can be customized to meet the most challenging forestry applications. Performance also extends equally from front to rear with a proven Caterpillar engine, comfortable cab and a sturdy, reliable boom and stick that have been performance matched to the machine.



Powertrain

Caterpillar C9 ACERT 8.8L meets Tier II requirements

Operator Comfort

The Prentice Model 2590 has a purpose built forestry cab with heavy-duty guarding, meeting FOPS/OPS/ROPS requirements. Designed with operator friendly controls and ergonomics, the cab gives excellent front, side and rear visibility. Isolation mounted cab and engine reduce sound levels and vibration for quiet and comfortable operation.



Undercarriage

Prentice track machines feature a rugged undercarriage custom designed for reliable operation in tough harvesting conditions, from wet bottomlands to steep rocky slopes.

Hydraulics

A closed center hydraulic system with electronic programmable controls that produces excellent multi-function capability coupled with a dedicated saw pump.

Boom and Stick

Harvester and feller buncher linkage arrangements are available for all models. All boom and stick structures are stress relieved for extended service life.

Versatility

Prentice track machines are available with factory-installed felling heads to meet your application needs. Prentice track machines utilize high pressure hydraulics and proven components. The Prentice Model 2590 is available with hot saw, intermittent or harvesting linkage fronts.

Serviceability

The hydraulically actuated clam-shell service doors provide full service access to daily service points simplifying maintenance. Regularly scheduled maintenance extends machine service life and lowers overall operating costs.

Owning and Operating Costs

Proven fuel efficiency combined with easier access and extended service intervals maximize uptime, reduce operating costs and maximize productivity.

Attachments

A full line of Prentice processor/harvester heads is available. Consult a Prentice Processing Head spec sheet for specific models and carrier application guide.

Undercarriage

High quality custom engineered, heavy duty forestry undercarriage.



Firm Footing

Productivity on the Model 2590 is based on a solid foundation, supplied by a heavy duty, forestry undercarriage custom engineered for the job. The high-wide carbody is built with rugged, precision-welded frames to reduce flexing and increase service life for rollers and track links. The result is greater reliability and improved performance, and increased productivity on steep slope applications.

Excellent Ground Clearance

Thanks to its wide stance and open carbody design, the Model 2590 FTS provides excellent ground clearance, which helps increase mobility in rugged conditions. Track gauge can be adjusted from 2591 to 2870 mm (102 to 113 inches) to match the application.



Power To Pull You Through

Backed by a powerful travel motor and nine bottom rollers per side, the rugged final drives provide 34246 kg (75,500 lbs.) of tractive effort to pull through wet bottoms or up steep slopes with equal ease. Track guards are also standard for added protection in rough terrain.

Prentice 2590 Track Feller Buncher

Boom and Stick

Designed for maximum reach and lift capacity.



Lifting The Standards

With its industry-leading lift capacity; exceptional reach and tight stick tuck-in capability, the Prentice 2590 delivers maximum productivity in a wide variety of felling applications. Equipped with the standard felling linkage, the 2590 feller buncher delivers 9400 kg (21,800 lb) of bare pin lift @ 6.6 m (21.5 ft.). The 2590 track harvester provides equally impressive performance and 4300 kg (9,500 lbs.) of bare pin lift capacity at 10.7m (35 ft).

Hydraulics

Powerful hydraulic system combined with a powerful boom and stick maximize productivity in any felling or harvesting job.



Hydraulic Muscle

Despite the strength and durability of the boom and stick, productivity is only as good as the hydraulic system that backs them up. That's why the Model 2590 is equipped with combined closed circuit 200cc variable displacement pumps for travel, boom and implement functions, and a third, dedicated 55cc variable displacement pump for the felling attachments. Optional hydraulics for dangle harvesting heads and intermittent saw heads are also available.



Clean Oil Insurance

Reduced downtime and oil cleanliness were top-of-mind in the design of the hydraulic system, as evidenced by a hydraulic oil sight gauge that ensures proper oil level with a quick glance. An easily accessible service wand also allows hydraulic oil to be pumped through the hydraulic filtering system and into the tank, reducing the risk of contaminants.



Tough Hydraulic Hoses

All hydraulic hoses for the stick and boom utilize a thin layer of UHMW polyethylene bonded to the rubber cover for exceptional abrasion resistance and maximum strength and flexibility, increasing hydraulic hose service life. In many cases, the need for external shields, which adds cost and restricts boom movement, is eliminated.

Prentice 2590 Track Feller Buncher

Operator Comfort

The interior layout maximizes operator space, provides exceptional comfort and reduces operator fatigue.



Field Office Comfort

With its exceptional comfort, roomy interior and high-tech monitoring/control system, the operator's station on the Model 2590 is more like an office than a cab. Operator comfort starts with isolation mounting on both the cab and the engine to reduce vibration and reduce sound levels. An air-ride, ergonomically designed seat and standard climate control system go even further to reduce operator fatigue and improve productivity.

In-Cab Power Sources

The Model 2590 utilizes a 24-volt electrical system powered by dual 12-volt maintenance-free batteries and a 95-amp alternator. However, the system also includes a 24-12 converter, which allows the use of two in-cab 12-volt power outlets and a single 24-volt power outlet. An optional cold weather starting attachment may be selected to provide two additional batteries, a HD starter, and HD cables.



Exceptional Visibility

Standard 1.25" thick "Margard" front window maximizes operator protection. All purpose built forestry cabs used on the Model 2590, are not only designed with heavy-duty guarding, to meet FOPS/OPS/ROPS requirements, but for exceptional visibility, as well. Post structures and window placement optimize visibility to the front, rear and sides for improved operator efficiency. An extra-large polycarbonate skylight provides excellent upward and overhead visibility and acts as an alternate escape hatch.

Extra Storage

Forget about cab clutter that can interfere with control operation. A large storage compartment, located behind the seat, is big enough to accommodate everything from a lunch box and hard hat to extra work tools.



IQAN Display

IQAN display allows the operator to continuously monitor the operating systems of the machine. This provides early warning for potential problems, and allows the operator to adjust control parameters maximizing performance and productivity.

Convenient Controls

Each control is placed within easy reach of the operator. Joysticks control the implement and attachment functions, providing easy operation.

Powertrain

Built for power, reliability, low maintenance, excellent fuel economy and low emissions.

Powerful Performance

The Cat® C9 electronically controlled ACERT delivers power while meeting all current Tier II emission standards. All models contain a fuel/water separator, engine air intake heater and a dual-stage combination air cleaner with pre-cleaner.

Engine Oil

Caterpillar engine oil is formulated to optimize engine life and performance and is recommended for use in Cat diesel engines. The engine oil change interval has been increased to 500 hours.

Service

The clamshell engine compartment provides easy access to oil filters, oil dipstick, hydraulic fill pump and hoses reducing maintenance time.

Low Exhaust Emissions

The Cat C9 ACERT engine is a low emission engine designed to meet US EPA off-road Tier II emission regulations.

Maximum Cooling

Efficient cooling translates into higher production during bunching and harvesting. That's why 2000 Series FTS models are equipped with a side-by-side radiator/oil cooler package and an on-demand radiator fan for use in dirty, dusty conditions. The fan blades reverse their angles to purge debris from the radiator area for improved air circulation. In addition, the IQAN control system in the cab monitors cooling requirements to infinitely control blade pitch angle to minimize horsepower requirements and lower operating costs, and fuel consumption.

Serviceability

Extended Service intervals and easy access reduce operating costs.



Quick, Easy Service Access

Serviceability is important with any machine. But it's particularly important when other jobs and functions are waiting on the feller buncher/harvester to get back on the job. That's why Prentice models are equipped with hydraulically actuated, clam-shell service doors. The quick, easy access to daily and periodic service and maintenance points means less downtime, more work time and greater productivity.

Extended Service Intervals

Caterpillar engines and components are known for their reliability. Thanks to new technology, they're also renowned for their extended service intervals and low machine service time, which help reduce overall operating and maintenance costs.

Hydraulic oil change intervals can be extended from 2,000 to 4,000 hours and engine oil change intervals occur every 500 hours on the Cat C9 engine used in the 2590. Thanks to the use of Extended Life Coolant/Antifreeze in the system, engine coolant intervals have been extended to 12,000 hours.

2590 SPECIFICATIONS

Prentice 2590 FTS Track Harvester Shipping Dimensions

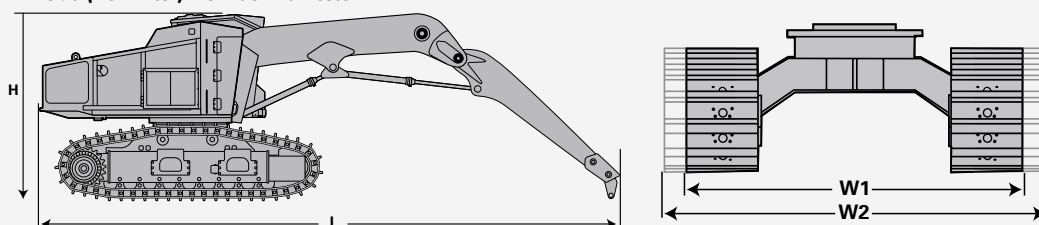
MODEL	Length	Height*	Width 1+	Width 2++	Weight
2590	13614 mm (536 in)	3556 mm (140 in)	3327 mm (131 in)	3607 mm (142 in)	30512 kg (67,267 lb)

Length, Height and Width assume 711 mm (28 in) SG shoes

* Height to top of cab w/ standard skylight + Width 1 is minimum width ++ Width 2 is maximum width when undercarriage is set wide

These illustrations and values are ESTIMATED for TRUCK SHIPMENT ONLY FROM THE FACTORY. These are subject to change based on attachments, configurations, add-ons, etc.

2590 (Non-Tilter) FTS Track Harvester



Prentice 2590 FTS Track Feller Buncher Shipping Dimensions

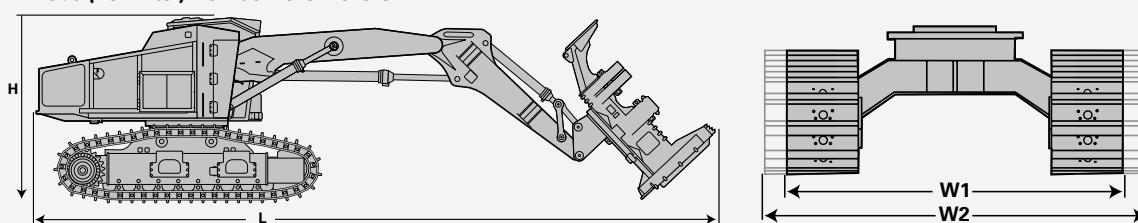
MODEL	Length	Height*	Width 1+	Width 2++	Weight
2590	9423 mm (371 in)	3556 mm (140 in)	3327 mm (131 in)	3607 mm (142 in)	30191 kg (66,560 lb)
2590*	11709 mm (461 in)	3556 mm (140 in)	3327 mm (131 in)	3607 mm (142 in)	33627 kg (74,119 lb)

Length, Height and Width assume 28 in (711 mm) SG shoes

* w/ HF 221 Partial Tilt Felling Head, tilted back and lifted (assumes an estimated additional head weight of 3436 kg (7559 lb)) ** Height to top of cab w/ standard skylight + Width 1 is minimum width ++ Width 2 is maximum width when undercarriage is set wide

These illustrations and values are ESTIMATED for TRUCK SHIPMENT ONLY FROM THE FACTORY. These are subject to change based on attachments, configurations, add-ons, etc.

2590 (Non-Tilter) FTS Track Feller Buncher



Prentice 2590 FTS Track Feller Buncher Shipping Dimensions with Long Reach Felling Linkage

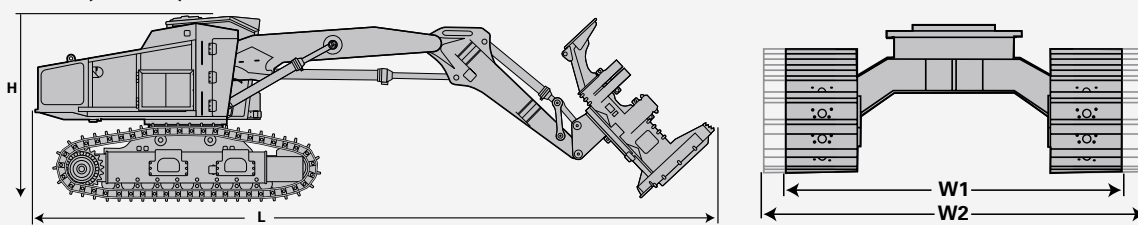
MODEL	Length	Height*	Width 1+	Width 2++	Weight
2590	11074 mm (436 in)	3556 mm (140 in)	3327 mm (131 in)	3607 mm (142 in)	30499 kg (67,239 lb)
2590*	13360 mm (526 in)	3556 mm (140 in)	3327 mm (131 in)	3607 mm (142 in)	33935 kg (74,798 lb)

Length, Height and Width assume 711 mm (28 in) SG shoes

* w/ HF 221 Partial Tilt Felling Head, tilted back and lifted (assumes an estimated additional head weight of 3436 kg (7559 lb)) ** Height to top of cab w/ standard skylight + Width 1 is minimum width ++ Width 2 is maximum width when undercarriage is set wide

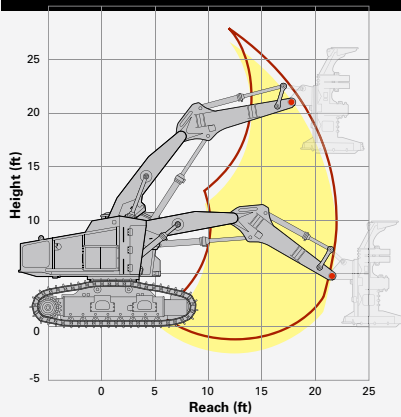
These illustrations and values are ESTIMATED for TRUCK SHIPMENT ONLY FROM THE FACTORY. These are subject to change based on attachments, configurations, add-ons, etc.

2590 (Non-Tilter)



Standard Felling Linkage

Non-tilter — 2590



Lift Over Front of Tracks

MODEL	2590
Reach	Lift Capacity
3.2 m (10.5 ft)	21600 kg (47700 lb)
4.5 m (15 ft)	15200 kg (33500 lb)
6.6 m (21.5 ft)	9400 kg (21800 lb)

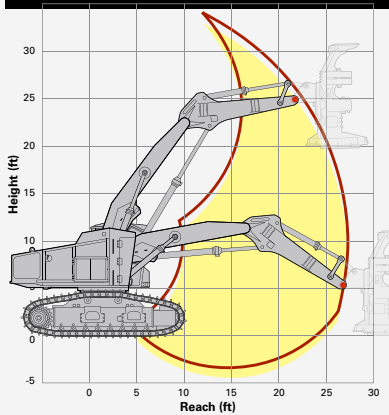
Lift Over Side of Tracks

MODEL	2590
Reach	Lift Capacity
3.2 m (10.5 ft)	19400 kg (42800 lb)
4.5 m (15 ft)	10600 kg (23400 lb)
6.6 m (21.5 ft)	6100 kg (13500 lb)

Note: Lift Capacity shown without attachment.
Additional reach and attachment weight will reduce lift capacity.

Long Felling Linkage

Non-tilter — 2590



Lift Over Front of Tracks

MODEL	2590
Reach	Lift Capacity
3.0 m (10 ft)	20800 kg (45900 lb)
6.1 m (20 ft)	10400 kg (22900 lb)
8.2 m (27 ft)	6400 kg (14200 lb)

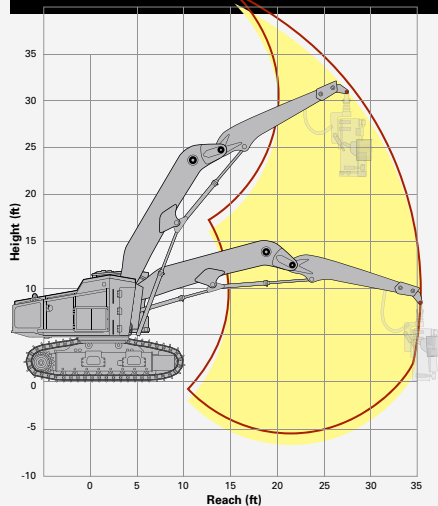
Lift Over Side of Tracks

MODEL	2590
Reach	Lift Capacity
3.0 m (10 ft)	20800 kg (45900 lb)
6.1 m (20 ft)	6600 kg (14600 lb)
8.2 m (27 ft)	4100 kg (9100 lb)

Note: Lift Capacity shown without attachment.
Additional reach and attachment weight will reduce lift capacity.

Harvesting Linkage

Non-tilter — 2590



Lift Over Front of Tracks

MODEL	2590
Reach	Lift Capacity
4.5 m (15 ft)	9100 kg (20200 lb)
10.7 m (35 ft)	4300 kg (9500 lb)

Lift Over Side of Tracks

MODEL	2590
Reach	Lift Capacity
4.5 m (15 ft)	9100 kg (20200 lb)
7.6 m (25 ft)	4500 kg (9900 lb)
10.7 m (35 ft)	2700 kg (5900 lb)

Note: Lift Capacity shown without attachment.
Additional reach and attachment weight will reduce lift capacity.

Electrical

24-volt electrical system
Two 12 volt maintenance free batteries
95 Amp alternator
IQAN programmable controls
MDL large screen display

Guards

Twin hydraulically actuated hinged engine enclosure with warning alarm
Engine fan guard
Bottom guards
Isolation mounted cab and engine
Heavy duty radiator guard door

Operator Environment

FOPS/OPS/ROPS cab
Dual joystick control
Reverse slope windshield
Air ride seat
Skylight - alternate escape hatch
Top escape hatch
76.2 mm (3 inch) retractable seat belt
Heater/air conditioner w/climate control
DIN mount radio ready with speakers
Operator sound suppression to standards
Travel alarm
Cup holders (2)
Two 12 volt and one 24 volt power outlets
Front window, 1.25 inch Margard

Powertrain

Cat C9 ACERT 8.8L engine meets Tier II emissions requirements
Infinitely variable travel speed
Under hood centrifugal precleaner and primary air filter
Heavy-duty cooling package

- Aluminum core ATAAC and side-by-side radiator and oil cooler
- Removable debris screen
- Swing out A/C condenser
- 43C ambient temperature capable

Electric fuel priming pump

Undercarriage

Track roller guards with access holes
Hydraulic track adjusters
Double flange bottom rollers
Caterpillar 330 HEX bolted, non-leveling carbody, variable gauge

Other Standard Equipment

Vandalism protection
Spare hose storage area
Grease gun bracket and storage area
Flexxaire™ Fan
Fuel water separator
1,181 Liter (312 US gal) fuel tank

Hydraulics

Dedicated fixed displacement pilot pump
Dedicated variable displacement pumps for track and implement functions
30 gpm variable displacement saw pump
Cat 325C swing drive and swing motor
Electric hydraulic oil fill pump
317.9 Liter (84 US gal) hydraulic tank

Antifreeze

50% concentration extended life coolant

Optional Equipment**Track Systems**

609.6 mm (24") SG pads, clipped corners, with mud/snow reliefs
711.2 mm (28") SG pads, clipped corners, with mud/snow reliefs
Star carrier Rollers

Other Equipment

Starting Aid, Cold Weather
Starting Aid, Arctic - Includes engine and hydraulic heaters

Field Installed Attachments

CD Player with AM/FM Stereo - remote capable
Skylight, peaked, removable
Loose Linkage Arrangements

2590 SPECIFICATIONS

Powertrain

Engine Model	Cat C9 ACERT engine
Peak Power @ 1800 RPM	227.4 kW (305 hp)
Rated Power @ 2100 RPM	210.3 kW (282 hp)
Displacement	8.8 L (537 in ³)

Boom System

Standard Felling Linkage - Max Reach (w/head)	8.6 m (28 ft 1 in)
Long Felling Linkage - Max Reach (w/head)	10.3 m (33 ft 10 in)
Harvesting Linkage - Max Reach (w/head)	11.3 m (37 ft)
Standard Felling Linkage - Bare Pin Lift @ Max Reach (w/o head)	9400 kg @ 6.6 m (21,800 lb @ 21.5 ft)
Long Felling Linkage - Bare Pin Lift @ Max Reach (w/o head)	6400 kg @ 8.2 m (14,200 lb @ 27 ft)
Harvesting Linkage - Bare Pin Lift @ Max Reach (w/o head)	4300 kg @ 10.7 m (9,500 lb @ 35 ft)

Service Refill Capacities

Fuel Capacity	1181 L (312 US gal)
Cooling System	61 L (16.1 US gal)
Engine Oil	22.7 L (24 US qts)
Hydraulic Tank	323 L (85.3 US gal)
Hydraulic System	370 L (97.7 US gal)
Swing Drive	10 L (2.6 US gal)

Hydraulic System

Electric hydraulic oil fill pump	STD
110 gpm variable displacement track and implement pumps	STD
Dedicated 30 gpm variable displacement pumps for saw motor	STD

Undercarriage (size/pitch)

330 HEX / 215.9 mm (8.5 in)

Track Gauge

2591 mm–2870 mm (102 in–113 in)

Track Length

4893 mm (192.6 in)

Ground Clearance

889 mm (35 in)

Tractive Effort

34246 kg (75500 lb)

Nine bottom rollers per side

STD

Bolt-on track guards

STD

Operating Weight - Standard Felling Linkage (w/o heads)

30191 kg (66,560 lb)

Operating Weight - Long Felling Linkage (w/o heads)

30499 kg (67,239 lb)

Operating Weight - Harvesting Linkage (w/o heads)

30512 kg (67,267 lb)



www.prenticeforestry.com

Cat Forest Products
535 Mack Todd Road
Zebulon, NC 27597
919-269-7421

We reserve the right to change specifications and to improve our products without notice or obligation.

Form No. PRFTS-0209 · Printed in U.S.A.