



## 2384C/2484C KNUCKLEBOOM LOADERS



	2384C	2484C
Engine	Cat® C6.6 ACERT™ Tier 4 Interim	Cat C6.6 ACERT Tier 4 Interim
Gross Power @ 1,800 rpm	129.5 kW (174 hp)	129.5 kW (174 hp)
Standard Knuckleboom Reach to Pin	9.8 m (32 ft)	9.8 m (32 ft)
Operating Weight (less grapple)	15 500 kg (34,100 lb)	16 582 kg (36,480 lb)



## More Loads, Less Fuel

### More Productive

Lift capacity at full reach has been increased 25% to 35%, depending on model. Plus, the new Prentice™ C Series is more fuel efficient and productive than the previous models. With the lift capacity, productivity boost and fuel savings, you can move more wood and lower your cost per ton.

### Fuel Efficient

Three operating modes give you the flexibility to match hydraulic power to the job. For normal loading operations, the Economy Mode provides fast cycle times and the most fuel economy. The Run Mode allows more hydraulic power for more demanding jobs and the Power Mode provides the most muscle for heavy duty delimiting, slashing and loading applications.

### Upgraded Hydraulics

Multi-functioning is fast and smooth. The new excavator-style Negacon piston pump hydraulic system is robust and reliable with a simple valve design and bigger spools to allow fluid to pass through more easily.

### Reliable

Larger condenser, solid state controls, Cat ToughGuard™ hoses and O-ring face seals, and beefy boom tube clamps increase reliability.



# Hydraulics

## Continuous, Reliable and Responsive Control

### Contents

Hydraulics .....	3
Power Train .....	4
Operator Station .....	5
Electronics .....	6
Structure and Subframe .....	6
Boom and Stick .....	7
Grapples .....	8
Timber Merchandising System .....	9
Owning and Operating Costs .....	10
Serviceability .....	11
Customer Support .....	12
Sustainability .....	12
Specifications .....	13
Standard Equipment .....	17
Optional Equipment .....	18

**Prentice knuckleboom loaders are known for superior multifunction capability, excellent visibility and heavy-duty booms and structures. Now the Prentice C Series knuckleboom loaders feature a new more fuel efficient power system, an upgraded hydraulic system for greater reliability and significantly more lift at full reach than previous models. Like the smaller model, the Prentice 2484C, now has a right-side operator's cab with a walk-up platform and enlarged doorway for enhanced access to the cab.**

### Powerful System

The custom-engineered hydraulic system forms the heart of the C Series. The system is designed for fast cycle times, smooth operation and maximum reliability in delimiting and loading operations.

### Hydraulic Pump is Powerful, Responsive, and Quiet

Designed for continuous, efficient and reliable operation, the loader's axial piston hydraulic pump meets stringent requirements for noise, efficiency, controllability and durability.

### Semi-monoblock Valve System

The valve system has proven reliability in forestry applications with its fuel efficient negative control system providing precise control of individual functions. Each section is tuned for optimized flow and pressure of the function, therefore increasing machine functionality and fuel efficiency.

### Operating Modes

Three operating modes allow the operator to tailor the machine's performance to match the job requirements. The "economy" mode provides the best combination of fuel efficiency and performance; an intermediate "run" position provides additional flow capabilities when higher production is required, and a "power" mode allows the full potential of the machine to come on-line to handle large timber and the heaviest delimiting requirements. All of the operating modes provide the best multi-function ability, function response, control and fast cycle times.

### Automated Control System

The Cat ECM provides best in class diagnostics, operator setup capability, and adjustment of attachment flows.

### Electric Hydraulic Oil Fill Pump

The hydraulic oil sight gauge makes it easy to know when oil needs to be added. Adding hydraulic oil is fast and easy with the on-board service hose and electric fill pump. Hydraulic oil is pumped through the filtering system and into the tank, maintaining cleanliness requirements.



# Power Train

Exceptional Power and Fuel Efficiency

## Cat C6.6 ACERT Engine

The Cat C6.6 engine with ACERT Technology gives exceptional power and fuel efficiency, while meeting U.S. Environmental Protection Agency (EPA) Tier 4 Interim, EU Stage IIIB emission standards. This engine includes electronic governing, cold mode start strategy, automatic altitude compensation, electronic diagnostics and fault monitoring.

## Exceptional Cooling Capability

An enlarged side by side engine coolant, hydraulic, and charge air cooling package allows efficient heat rejection. Individually isolated cooling cores eliminating core to core thermal stresses to greatly increase durability.

## Speed Modulated Viscous Fan

The large 864 mm (34 in) diameter electronically controlled variable speed fan is speed modulated to provide cooling only as required, resulting in reduced noise levels and lower fuel consumption.

# Operator Station

Comfort and Convenience to Keep People Productive

## Enhanced Entry System

The walk up platform includes skid resistant deck and stair components. An enlarged doorway provides easy cab entry.

## Front Window Guard

The HD front window guard provides an extra level of protection while handling large trees and building high wood piles.

## Clear Visibility

The reverse slope front window stays clean while accumulated moisture and dust can be removed with the front window wiper/washer.

## High Back Comfort Seat

The suspension seat features lumbar support and head rest that provide optimum comfort. Armrests are adjustable and cupped for better arm support.

## Ergonomic Machine Controls

Hydraulic pilot actuated joystick controls with foot pedal swing for easy operator control of all functions.

## Climate Controlled Cab

A high capacity air conditioning and heater system includes channeled air flow to louvered vents for full coverage of the operator and defrosting/defogging of windows.

## Molded Consoles and Headliner

The molded console with storage trays eliminates cab clutter. The headliner helps reduce noise in the cab and houses HVAC louvers that allow the operator to adjust air flow. Two 12-volt power points and a factory installed CB mounting bracket, antenna cable, and power harness provide flexibility for additional electric and electronic equipment.





# Electronics

## Durable and Reliable

### Information Display

A premium gauge cluster includes LED indicators and a digital display which provides information about machine operation, control activation, system diagnostics and operator adjustable settings.

### Solid State Controls

Standard industry relays are replaced by solid state controls in high cycle applications to provide substantially longer service life.

# Structure and Subframe

## Built to Work in Rugged Applications



### Performance

High swing torque, swing speed and lift capacity of Prentice knuckleboom loaders reduce cycle times and lower cost per ton.

### Durability

The heavy-duty structures of these loaders makes them the right choice for high production, high cycle applications or when handling big hardwoods.

The rugged upper frame includes cross plate head side reinforcement for severe delimiting applications.

### Subframe Design

Simple, clean and engineered for long life providing a rock solid base for optimum stability.

### Stabilizers

Wide stance stabilizer legs and cylinder mounted lock valves resist side pulling and provide 360 degree stability for heavy lifting.



# Boom and Stick

## Made for Heavy Lifting and Long Service Life

### Durability

Reliable, heavy-duty booms increase uptime and reduce repair costs.

### Strength

The main booms are constructed in a box design with thick walls and strong welds.

### Cast Pin Points

The ends and middle of the main booms are cast, which is stronger and lighter than fabricating.

### Steel Tube Lines

Steel tube hydraulic lines provide extended life and effectively dissipate heat.





# Grapples

Work Tool Options to Meet Your Needs

From log loading to pull through delimiting, a selection of grapple styles are available, including:

- TW (tapered wedge) jaw designs for easily grabbing trees from a pile and aggressively gripping trees for delimiting.
- SN (straight, narrow) jaw designs for easy log handling in loading and millyard applications.

## High Tensile Steel

Grapple jaws are constructed of special high-tensile wear resistant steel. Critical areas of the jaws are reinforced and designed to protect the cylinder rods and hoses.

## Optimum Configurations

Cylinder size and jaw configuration provide holding forces for large multi-stem loads as well as the ability to handle single logs.

## Rounded Jaw Tips

Rounded jaw tips minimize damage to individual logs.

## Heavy-duty Rotators

Heavy-duty rotators include high-pressure swivels for demanding applications. Each head assembly is constructed of high-tensile steel with heavy-duty bearings and hardened gears.



# Timber Merchandising System

A Complete Factory Installed System

The Timber Merchandising System (TMS) is a complete factory installed delimit/slaser package consisting of a knuckleboom loader and grapple, trailer with trailer-mounted delimit and ground saw slasher connections. The structural design on these loaders is proven to provide long life in punishing, pull-through delimiting applications.

The package contains either a three-knife CTR 320 or a four-knife CTR 426 pull-through delimit to match application requirements. These delimiters are designed to allow quick, easy loading of trees and produce clean, delimited stems in a flash. These delimiters also have central lubrication banks and ground level oil fill for quick, easy service. An automatic chain tensioner simplifies maintenance and extends bar and chain life.

The delimiting trailers are built with structural reinforcing in critical areas for durability. Non suspension or single point tandem axle suspension is available and all trailers feature hydraulically adjustable landing gear that is adjustable from in-cab controls. This feature allows the operator to quickly position the loader in a proper operating position and make adjustments to maintain a stable base under the delimit.





# Owning and Operating Costs

Proven Best Investment

## More Productive

The new Prentice C Series is more fuel efficient and productive than the previous models. In controlled lab tests, the 2384C was 22% more productive than the 2384B. You can move more wood and lower your cost per ton.

## Fuel Efficient

A choice of operating modes give you the flexibility to match hydraulic power to the job. For normal loading operations, the Economy Mode provides fast cycle times and the most fuel-efficient performance.

## Designed for Logging Applications

The booms and base structures are specifically designed for loading and delimiting applications, providing the strength and durability that allows for a long service life.

## Product Link™

Allows tracking of operational parameters to ensure optimum utilization and on time service intervals.

## Automatic Idle Down

The loader control system includes an automatic engine idle down feature to reduce fuel consumption during periods of inactivity.

# Serviceability

Easy to Maintain. Easy to Service.

## Ground Level Filter Access

Easy changing of engine, fuel, pilot and case drain filters.

## Outer-Tank Capsule Filter Assembly

Eliminates contamination backflow during filter changes.

## Eco-Valves

Allows capturing of fluids for easy draining without spillage.

## Easy Fluid Changes

An electric refill pump to add oil into the hydraulic tank maintains system cleanliness by passing all oil through the filtering system.

## Electric Fuel Priming Pump

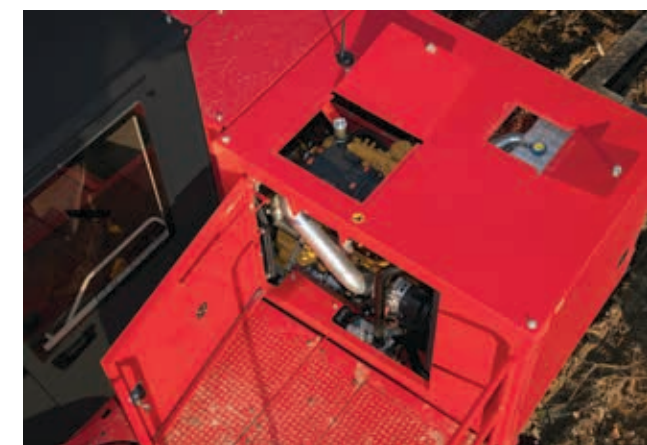
Easy priming of the fuel system after a service interval, eliminating the potential of fuel contamination.

## Swivel, Collector and Swing Motor Access

Large access openings provide easy serviceability of fittings and connectors. Oil level check is accessed on the platform.

## Isolated Cooling Cores

Isolated cooling cores can be individually removed, reducing service times.





## Customer Support

Ready to Help. Anytime. Anywhere.



Your local Prentice dealer is your forestry consultant who can recommend the machines, work tools and services to maximize your operation and provide the support to keep you at top productivity.

- 24-hour parts availability, where and when you need them, to minimize expensive downtime.
- Remanufactured parts that carry the same warranty as new parts at a reduced cost.
- Operator training to get the most out of your Prentice equipment.
- Field services to provide on-site help when needed.
- Timely repair and replacement services.
- Customer Support Agreements to lower your operating costs.
- Financing programs for buying, renting or leasing Prentice equipment.
- Prentice Insurance to cover equipment losses from theft, collision, flood, upset or overturn, fire, vandalism and more.
- Product Link to manage your equipment fleet through remote monitoring.

For more information on Prentice products, dealer services and industry solutions, visit us at [www.prenticeforestry.com](http://www.prenticeforestry.com).

## Sustainability

Reducing Environmental Impacts

### Structures

Major structures and components are built to be rebuilt, reducing waste and replacement costs.

### ACERT Engines

ACERT Technology reduces engine emissions at point of combustion with less moving parts for lower operating costs.

### Engine

2384C		
Engine Model	Cat C6.6 ACERT	
Gross Power @ 1,800 rpm	129.3 kW	173 hp

2484C		
Engine Model	Cat C6.6 ACERT	
Gross Power @ 1,800 rpm	129.3 kW	173 hp

### Weights

2384C		
Operating Weight without grapple	15 500 kg	34,100 lb
Counterweight	0 kg	0 lb

2484C		
Operating Weight without grapple	16 582 kg	36,480 lb
Counterweight	653 kg	1,440 lb

### Hydraulic System

2384C		
Hydraulic Oil Flow @ 1,800 rpm	230/174 L	60/46 gal
Hydraulic Pressure – System	24 131 kPa	3,500 psi
Hydraulic Pressure – Swing	24 131 kPa	3,500 psi
Cylinders – Main	two	
Cylinders – Stick	one	
Cylinders – Stabilizers	four	

2484C		
Hydraulic Oil Flow @ 1,800 rpm	230/230 L	60/60 gal
Hydraulic Pressure – System	24 131 kPa	3,500 psi
Hydraulic Pressure – Swing	24 131 kPa	3,500 psi
Cylinders – Main	two	
Cylinders – Stick	one	
Cylinders – Stabilizers	four	

### Operating Specifications

2384C		
Maximum Reach (standard boom)	9.8 m	32.0 ft
Swing Torque	66 870 N·m	49,173 lbf-ft
Swing Speed	11 rpm	
Tailswing	2692 mm	106 in
Swing Bearing Diameter (ball path)	1105 mm	43.5 in

2484C		
Maximum Reach (standard boom)	9.8 m	32.0 ft
Swing Torque	100 360 N·m	73,800 lbf-ft
Swing Speed	9.5 rpm	
Tailswing	2750 mm	108.2 in
Swing Bearing Diameter (ball path)	1105 mm	43.5 in

### Service Refill Capacities

2384C		
Fuel Tank	378 L	100 gal
Hydraulic Tank	302 L	80 gal
Engine Oil	15 L	4 gal
Cooling System	29 L	7.5 gal
Swing Drive	4 L	1.0 gal

2484C		
Fuel Tank	378 L	100 gal
Hydraulic Tank	302 L	80 gal
Engine Oil	15 L	4 gal
Cooling System	29 L	7.5 gal
Swing Drive	10 L	2.6 gal

### Dimensions

2384C		
Height to Top of Cab	4002 mm	157.6 in
Stabilizer Spread at Grade	4758 mm	187.3 in
Stabilizer Spread at Maximum Down Reach	4237 mm	166.8 in
Stabilizer Reach Below Grade	433 mm	17 in
Stabilizer Pad Size	508 × 711 mm	20 × 28 in

2484C		
Height to Top of Cab	4112 mm	161.9 in
Stabilizer Spread at Grade	4670 mm	183.8 in
Stabilizer Spread at Maximum Down Reach	4237 mm	166.8 in
Stabilizer Reach Below Grade	324 mm	12.8 in
Stabilizer Pad Size	508 × 711 mm	20 × 28 in

- 2384C dimensions are on non suspension trailer.
- 2484C dimensions are on suspension trailer.

### Standards

2384C	
OFPS	cab meets SAE J2267

2484C	
OFPS	cab meets SAE J2267

### Shipping Dimensions (mounted trailer)

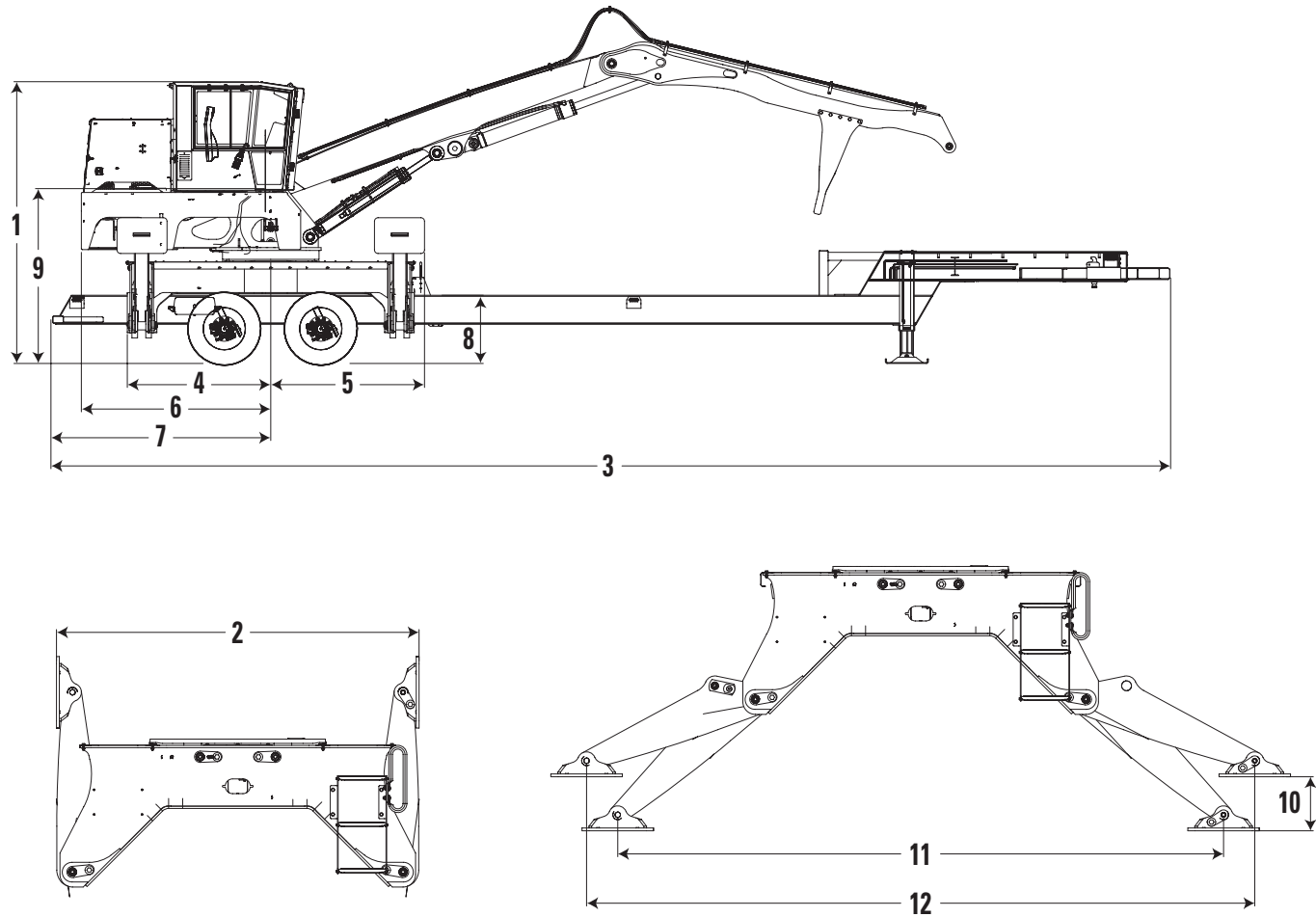
2384C		
Width	2573 mm	101.3 in
Height	4002 mm	157.6 in

2484C		
Width	2573 mm	101.3 in
Height	4112 mm	161.9 in

# 2384C/2484C Knuckleboom Loader Specifications

## Dimensions

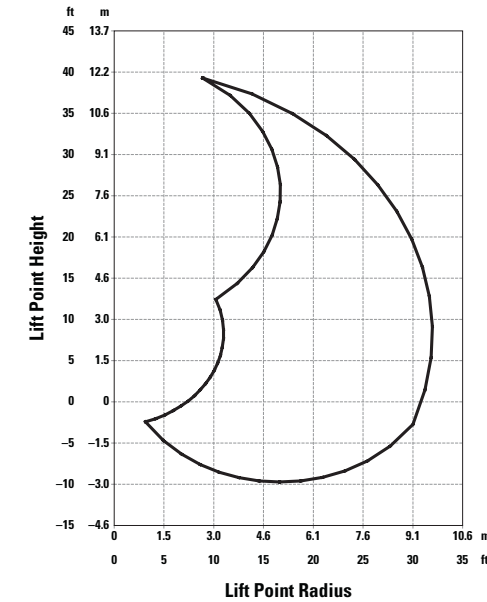
All dimensions are approximate.



	2384C		2484C	
<b>1</b> Height – to Top of Cab	4002 mm	157.6 in	4112 mm	161.9 in
<b>2</b> Width – in Transport Position	2573 mm	101.3 in	2573 mm	101.3 in
<b>3</b> Length – Trailer Option	15.88 m	52.1 ft	15.88 m	52.1 ft
<b>4</b> Distance – Center of Rotate to Front/Rear Subframe	2039 mm	80.3 in	2039 mm	80.3 in
<b>5</b> Distance – Center of Rotate to Front/Rear of Stabilizer Pad	2185 mm	86.0 in	2185 mm	86.0 in
<b>6</b> Distance – Center of Rotate to Rear of Loader	2692 mm	106.0 in	2750 mm	108.2 in
<b>7</b> Distance – Center of Rotate to Rear of Trailer Option	3124 mm	123.0 in	3124 mm	123.0 in
<b>8</b> Height – to Deck	991 mm	39.0 in	1098 mm	43.2 in
<b>9</b> Height – to Main Boom Pin	2484 mm	97.8 in	2591 mm	102.0 in
<b>10</b> Stabilizer Reach Below Grade	433 mm	17.0 in	324 mm	12.8 in
<b>11</b> Stabilizer Spread – to Pin Center at Maximum Down Reach	4237 mm	166.8 in	4237 mm	166.8 in
<b>12</b> Stabilizer Spread – to Pin Center at Grade	4758 mm	187.3 in	4670 mm	183.8 in

2384C dimensions are on non suspension trailer.  
2484C dimensions are on suspension trailer.

## 2384C Lift Chart

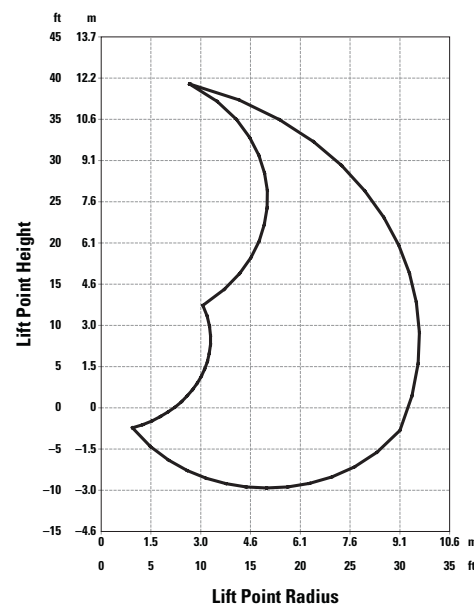


	3 m (10 ft)		4.6 m (15 ft)		6.1 m (20 ft)		7.6 m (25 ft)		9.1 m (30 ft)		Maximum Reach		
	kg	lb	kg	lb	kg	lb	kg	lb	kg	lb	kg	lb	
<b>10.6 m (35 ft)</b>			<b>6254</b> 5441 5441	<b>13,805</b> 12,011 12,011									<b>100% Hydraulics</b> Over End Over Side
<b>9.1 m (30 ft)</b>					<b>5899</b> 5132 5132	<b>13,021</b> 11,328 11,328							<b>100% Hydraulics</b> Over End Over Side
<b>7.6 m (25 ft)</b>					<b>6090</b> 5298 5298	<b>13,443</b> 11,696 11,696	<b>5589</b> 4569 4569	<b>12,337</b> 10,086 10,086					<b>100% Hydraulics</b> Over End Over Side
<b>6.1 m (20 ft)</b>					<b>6236</b> 5425 5425	<b>13,765</b> 11,976 11,976	<b>5751</b> 4862 4862	<b>12,696</b> 10,733 10,733					<b>100% Hydraulics</b> Over End Over Side
<b>4.6 m (15 ft)</b>			<b>7850</b> 6829 6829	<b>17,328</b> 15,075 15,075	<b>6659</b> 5793 5793	<b>14,699</b> 12,788 12,788	<b>6542</b> 5004 5004	<b>14,441</b> 11,046 11,046	<b>4809</b> 4184 3666*	<b>10,616</b> 9,236 8,092*			<b>100% Hydraulics</b> Over End Over Side
<b>3 m (10 ft)</b>			<b>9118</b> 7932 7932	<b>20,127</b> 17,510 17,510	<b>7892</b> 6866 6866	<b>17,421</b> 15,156 15,156	<b>6660</b> 5691 5018*	<b>14,702</b> 12,563 11,077*	<b>4923</b> 4283 3607*	<b>10,867</b> 9,454 7,962*	<b>3579</b> 3114 3114	<b>7,900</b> 6,873 6,873	<b>100% Hydraulics</b> Over End Over Side
<b>1.5 m (5 ft)</b>			<b>11 152</b> 9703 9703	<b>24,619</b> 21,419 21,419	<b>8385</b> 7295 7235*	<b>18,510</b> 16,104 15,972*	<b>6660</b> 5794 4853	<b>14,702</b> 12,791 10,712*	<b>4749</b> 4132 3538	<b>10,484</b> 9,121 7,811*			<b>100% Hydraulics</b> Over End Over Side
<b>0 m (0 ft)</b>	<b>9419</b> 8195 8195	<b>20,793</b> 18,090 18,090	<b>11 478</b> 9986 9986	<b>25,338</b> 22,044 22,044	<b>8420</b> 7326 6951	<b>18,587</b> 16,171 15,345*	<b>6439</b> 5602 4719	<b>14,215</b> 12,367 10,418*	<b>4232</b> 3682 3495	<b>9,342</b> 8,127 7,715*			<b>100% Hydraulics</b> Over End Over Side
<b>-1.5 m (-5 ft)</b>	<b>8938</b> 7776 7776	<b>19,731</b> 17,166 17,166	<b>10 517</b> 9150 9150	<b>23,216</b> 20,198 20,198	<b>7673</b> 6675 6512*	<b>16,937</b> 14,735 14,375*	<b>5566</b> 4843 4657*	<b>12,287</b> 10,690 10,281*					<b>100% Hydraulics</b> Over End Over Side

\*Stability limited capacities.



## 2484C Lift Chart



Height	3 m (10 ft)		4.6 m (15 ft)		6.1 m (20 ft)		7.6 m (25 ft)		9.1 m (30 ft)		Maximum Reach		
	kg	lb	kg	lb	kg	lb	kg	lb	kg	lb	kg	lb	
10.6 m (35 ft)			7455	16,457									100% Hydraulics Over End Over Side
9.1 m (30 ft)					7039	15,539							100% Hydraulics Over End Over Side
7.6 m (25 ft)					7234	15,968	6281	13,865					100% Hydraulics Over End Over Side
6.1 m (20 ft)					7412	16,362	6696	14,781					100% Hydraulics Over End Over Side
4.6 m (15 ft)			9269	20,461	7929	17,504	6898	15,228	5762	12,719			100% Hydraulics Over End Over Side
3 m (10 ft)			10 887	24,034	9338	20,614	7783	17,180	5959	13,154	4318	9,532	100% Hydraulics Over End Over Side
1.5 m (5 ft)			13 174	29,082	9947	21,959	7941	17,529	5767	12,731			100% Hydraulics Over End Over Side
0 m (0 ft)	12 570	27,748	13 609	30,041	10 020	22,120	7703	17,004	5119	11,300			100% Hydraulics Over End Over Side
-1.5 m (-5 ft)	11 940	26,358	12 527	27,654	9175	20,253	6703	14,796					100% Hydraulics Over End Over Side

\*Stability limited capacities.

## Standard Equipment

Standard equipment may vary. Consult your Prentice dealer for details.

### ELECTRICAL

- 24V system
- Master disconnect
- Circuit breaker protection
- 95 Amp alternator
- Two (2) 12V maintenance free batteries
- Standard lighting package
  - Two (2) cab mounted halogen light fixtures
- Electronic engine/machine monitoring system
- Two (2) 12V power points
- 20 circuit electric swivel

### OPERATOR ENVIRONMENT

- Cab with swing out front window guard (meets SAE J2267)
- Isolation mountings
- Dual joystick control (pilot hydraulic actuation) with foot pedal swing
- Electric stabilizer controls
- Integrated trailer landing gear control
- Pilot shut-off button
- Push button throttle control
- Reverse slope windshield
- Skylight
- Tinted safety glass
- Sunshade – dual position for front window/skylight
- High back suspension seat with lumbar support
- High capacity AC/heater system with outside air intake
- Defroster fan
- Windshield wiper/washer
- Dome light
- Horn
- Radio ready – includes speakers and AM/FM antennas
- CB Radio ready – includes mounting bracket, power and ground wires, antenna cable and antenna mount bracket
- Product Link ready
- Cup holder
- Fire extinguisher mounting bracket
- Diagnostic port
- Cell phone storage tray

### POWER TRAIN

- Cat C6.6 ACERT engine meets U.S. EPA Tier 4 Interim/EU Stage IIIB emission standards
- Electric fuel priming pump
- Air precleaner
- 2-stage air cleaner
- Enlarged cooling package with isolated cores
- 378 L (100 U.S. gal) fuel tank
- Fuel water separator
- Variable speed fan

### HYDRAULICS

- Twin 140 cm<sup>3</sup> (8.54 in<sup>3</sup>) variable displacement pumps
- Excavator style “Negacon” system
- Bar slasher/delimiter hydraulic package
- 302 L (80 U.S. gal) hydraulic tank
- Electric hydraulic oil fill pump

### STRUCTURE AND SUBFRAME

- 653 kg (1,440 lb) counterweight (2484C)
- Fabricated heavy-duty, extended length center mount subframe
- Flat top subframe deck with bolt-on skid resistant fenders
- Bolt-on subframe ladder

### BOOMS AND STICKS

- 9.8 m (32 ft) reach knuckleboom
- 229 mm (9 in) grapple mounting knuckle

### ANTIFREEZE

- 50% concentration extended life coolant



**Optional Equipment**

Optional equipment may vary. Consult your Prentice dealer for details.

**TMS SYSTEMS**

- Non-suspension trailer with hydraulic landing gear (2384C)
- Suspension trailer with hydraulic landing gear
- CTR 320 three-knife delimeter
- CTR 426 four-knife delimeter

**OTHER EQUIPMENT**

- Product Link
- AM/FM/CD/Satellite radio receiver
- Long-range front lights on cab
- Engine compartment lights
- Additional subframe ladders
- Auxiliary light package
- Slasher port adapter fittings
- Single “V” and double “VV” bolt on heels
- Single “V” extended and double “VV” extended bolt on heels
- 305 mm (12 in) grapple mounting knuckle
- Grapples



# 2384C/2484C Knuckleboom Loader

For more complete information on Prentice products, dealer services, and industry solutions, visit us on the web at [www.prenticeforestry.com](http://www.prenticeforestry.com).

AEHQ7089-01 (06-2014)

© 2014 Caterpillar Forest Products Inc.  
All rights reserved

Materials and specifications are subject to change without notice. Featured machines in photos may include additional equipment. See your Prentice dealer for available options.

PRENTICE, its respective logos, as well as corporate and product identity used herein, are trademarks of Caterpillar Forest Products Inc. and may not be used without permission.

