

New For October



From the Vault - Caterpillar Heritage Services
historical videos, stories, artifacts and photographs,
company timeline

CATERPILLAR VISITORS CENTER PRODUCT FLOOR Now features - Cat® D8T Bulldozer, 586C Site Prep Tractor, 277D Multi Terrain Loader, CB54B Vibratory Roller, TH407 Telehandler, and 303.5E Mini Hydraulic Excavator.

HISTORY OF CAT TOY EXHIBIT Coming to the Caterpillar Visitors Center, November 2015

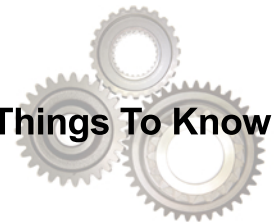
CATERPILLAR VISITORS CENTER TOURS

K-12 Pricing:

Students age 12 and under (K - 7th grade) - no charge
Students over age 12 (8th - 12th grade) - \$3.00 per student
Adults/teachers/chaperones - \$3.00 per person
One free adult/teacher/chaperone per ten paid students.

College Pricing: Group rate - \$6.00 per person

Things To Know



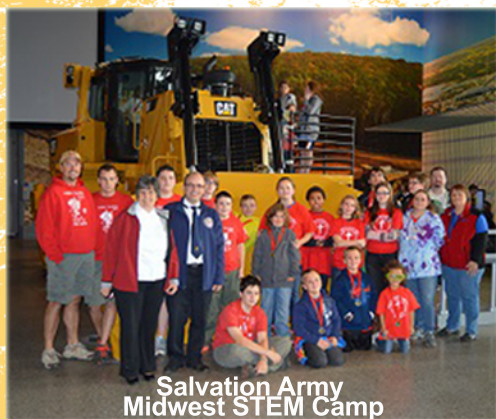
MAKING TRACKS AT THE CATERPILLAR VISITORS CENTER



Northern IL University
University of Bordeaux, France



Macomb, IL High School
Demark Exchange Program



Salvation Army
Midwest STEM Camp



Western IL University
WESL Institute
Center for International Studies

CATERPILLAR VISITORS CENTER GALLERY SPOTLIGHT

Around the World, Around the Clock



Around the world right now, Caterpillar engineers are researching new technologies, designing new products, analyzing pilot product performance data, and configuring new assembly lines.

People are working together across oceans and time zones to make sure the next generation of Caterpillar products delivers the quality, performance, and value that Caterpillar customers deserve.

A global research and development footprint is designed to bring innovation and technical expertise to customers everywhere, from the world's largest cities to developing nations.

Caterpillar is working to satisfy the demands of its customers 24 hours a day, 365 days a year. At the end of each work day in the United States, the work that was done is transferred to offices around the world for continued development.

CRITICAL THINKING:

What are the benefits to working on a project non-stop?

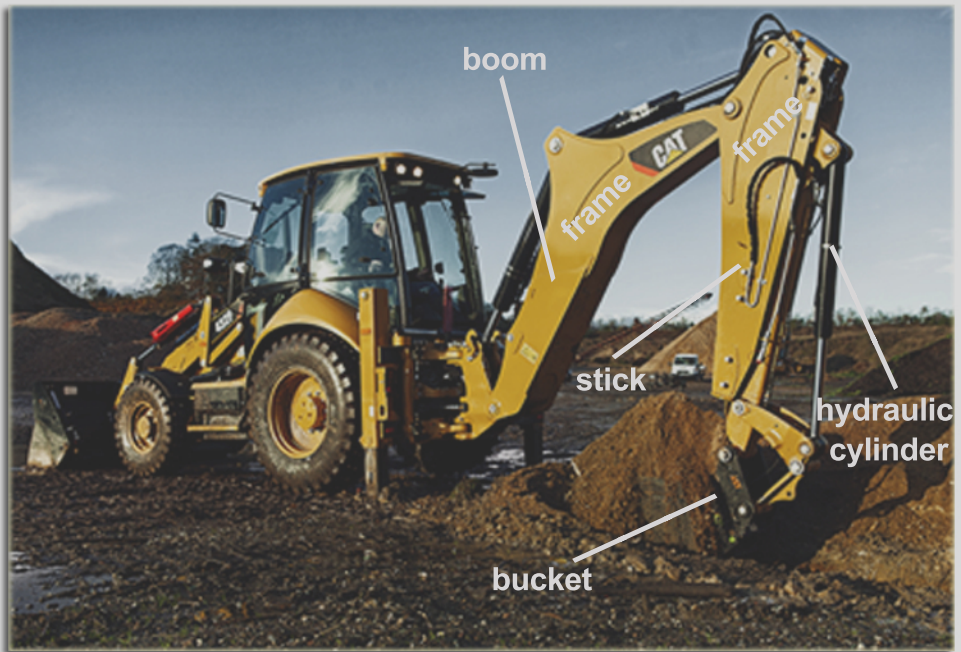
How does collaboration with team members around the world improve a project?

What challenges do you think a team in another country might face working with a team in the United States? What challenges would the U.S. team face?

Would you like to work outside the United States some day? If so, where would you like to work and what language is spoken there? Should you learn that language?

ENGINEERING DESIGN ACTIVITY

444F Cat Backhoe Loader



How is a backhoe like your arm?

The boom, stick, and bucket make up the implement which is also called the backhoe. They are connected by joints.

The frame of the backhoe provides structural support.

Hydraulic cylinders deliver power and precise control to keep material moving.

Think of the backhoe as an extension of the operators arm.

Critical thinking:

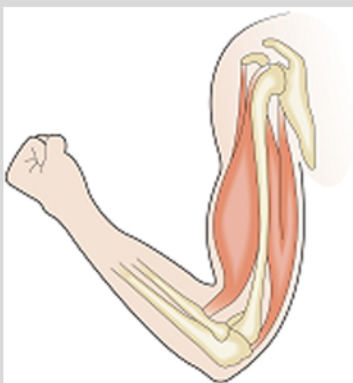
What does it mean to say that the backhoe is an extension of the operators arm?

Which parts of your arm can be compared to the boom? the stick? the bucket?

Joints connect the boom, stick, and bucket. Where in your arm do you have joints?

What parts of your arm provide power similar to the hydraulic cylinders on a backhoe?

What parts of your arm provide structural support similar to the frame on a backhoe?



CAREERS AT CATERPILLAR

WHAT IS SUPPLY CHAIN MANAGEMENT?

Part 2

What is the career path at Caterpillar?

Many of the entry level career paths at Caterpillar begin with college internship positions. An internship with Caterpillar helps an aspiring professional gain “real” world work experience in an area in which they are studying. This also helps students ensure their academic focus is in an area that they will enjoy building a career.

Internships are also an opportunity for Caterpillar to assess a student’s potential and work ethic. Upon graduation from college, there are a variety of full-time opportunities available. Entry level rotational programs are very common. Within the supply chain and logistics function, a three-year rotational program exists where new employees experience three different facets of Caterpillars supply chain. There are also entry level analyst positions available for individuals who have a specific career path in mind. Regardless of an individual’s first job, they are learning and acquiring a skillset that enables them to fill future senior staff and leadership positions.

When should a student start focusing on building skills needed for a career in the supply chain and logistics function?

It’s never too early! There are many things students can do to prepare themselves for their careers. Mathematics and technology are critical skills for supply chain and logistics professionals. Students should focus on developing computer and problem solving skills and take active leadership roles in clubs and teams to refine teamwork skills and to focus on collaborative goals.

Where are the supply chain and logistics jobs at Caterpillar?

Peoria is the home to Caterpillar’s headquarters, so, it is common for entry level positions to be based in the greater Peoria area. After an individual learns more about the workings of the company, there are often opportunities for individuals to relocate to other Caterpillar, U.S. and global locations, based on personal desires and business needs. Individuals participating in rotational development programs may also have an opportunity to relocate or travel as part of the program.

Why is the supply chain and logistics function important to Caterpillar?

Caterpillar’s business is based on selling our products and service parts around the world in a fast and efficient way to support our dealers and customers. For instance, roughly 60% of Caterpillar’s products made in the U.S. are exported globally. In order to manage this global network, Caterpillar needs to have a focused approach on supply chain and logistics to optimize the flows and our profitability.

