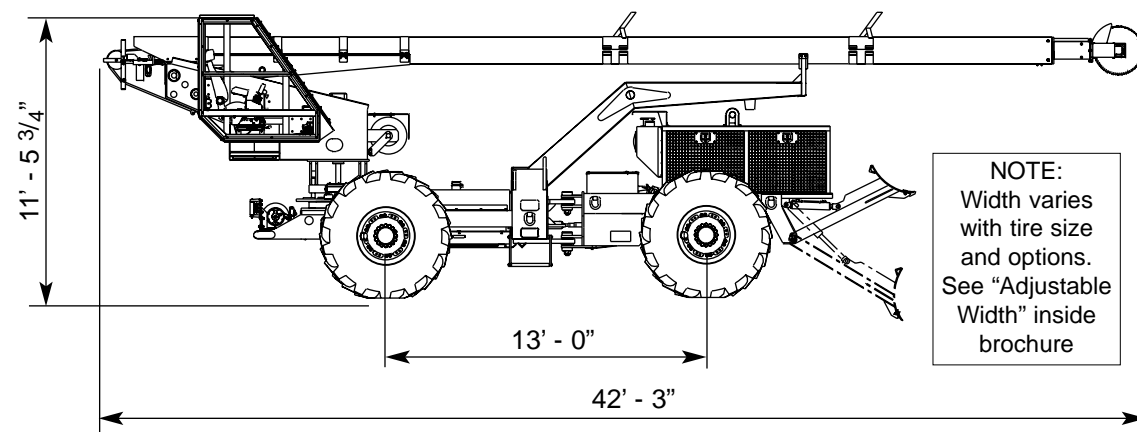


SkyTrim 75 G2



Description: The SkyTrim is a rough terrain, rubber-tired vehicle with telescoping boom and saw-type cutter head designed to trim trees.

Frame: Welded construction front and rear main frames. High-strength alloy steel superstructure.

Weight: Approximately 24,300 lbs with standard tires.

Engine: Equipped with liquid-cooled 4.4 liter Caterpillar® diesel engine rated for 127 hp @ 2200 rpm. Open engine compartment for maximum accessibility with light weight composite doors.

Propel System: Hydrostatic 4-wheel drive with propel motor driving through a heavy-duty 2-speed powershift transmission to limited-slip and lock-on-demand axles.

Transmission and Axles: 2-speed shift-on-the-go transmission connected by heavy-duty drive shafts to both axles. Heavy-duty Caterpillar® axles with inboard wet disc service brakes. Rear axle is rigid mounted lock-on-demand, front axle designed to oscillate.

Wheels, Tires and Brakes: Tires: 28L-26 logger type tire standard. Wheels are adjustable to change track width. Service brakes are wet disc inboard hydraulically applied and "built-in" the axles. Parking brakes are fail-safe spring-applied/hydraulic-released wet disc drive-line mounted. Parking brakes will automatically apply and stop machine if engine stops.

Hydraulic System: Engine driven pump drive. Hydrostatic propel system consists of closed loop pump driving a hydraulic propel motor mounted on transmission. Charge loop filtration. Hydraulic reservoir mounted outside engine compartment with cleanout port and shutoff valve. Equipped with electric emergency pump. Upperstructure tilt system and boom up/down system equipped with lock valves.

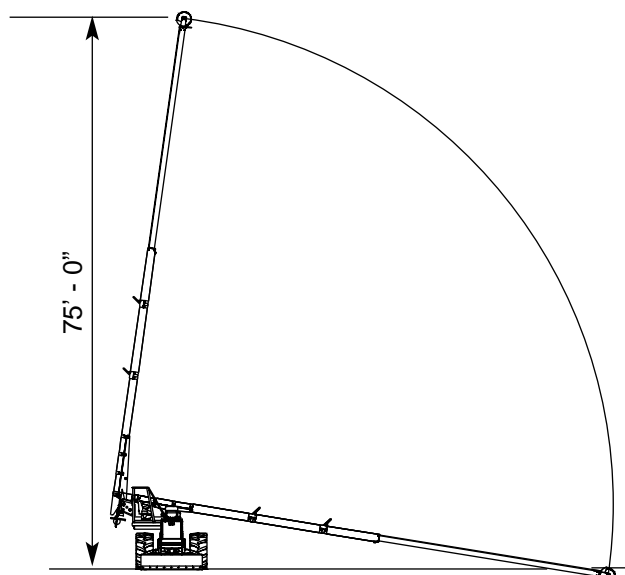
Electrical System: 12 volt dc negative ground with engine driven alternator and two 12-volt batteries w/950 cold cranking amps each. Equipped with safety electric strobe light.

Capacities: Fuel: 60 gal. Hydraulic: 30 gal.

Cab: Equipped with 1 1/4" tinted Lexgard® top, engine instruments, and ergonomic seat. Equipped with light touch hydraulic pilot pressure joystick for extend-lift-swing-tilt boom controls. Heavy duty swing bearing with worm gear drive for maximum tooth engagement. Floor is fully enclosed. Back is fully enclosed with safety tinted Lexgard®. Access door is full length tinted Lexgard® with positive latch. Optional fully enclosed cab with heater and air conditioner available.

Boom: Telescoping composite construction with 75 ft. reach from ground. Telescoping boom driven with #50 chain. Each unit is electrically insulated and tested to ANSI A92.2-2001 Category C standards to 100 kv for maximum operator safety. Equipped with single 24 inch diameter carbide-tipped saw turning @ 2800 rpm.

Optional Equipment: Front mounted winch. Optional tire sizes. Air conditioner & heater with enclosed cab. Other options available upon request.



www.kershawusa.com

Printed in U.S.A. January 2009

KERSHAW
a division of Progress Rail Services

P. O. Box 244100
Montgomery, AL 36124

Telephone (334) 387-9100
Fax (334) 387-9375

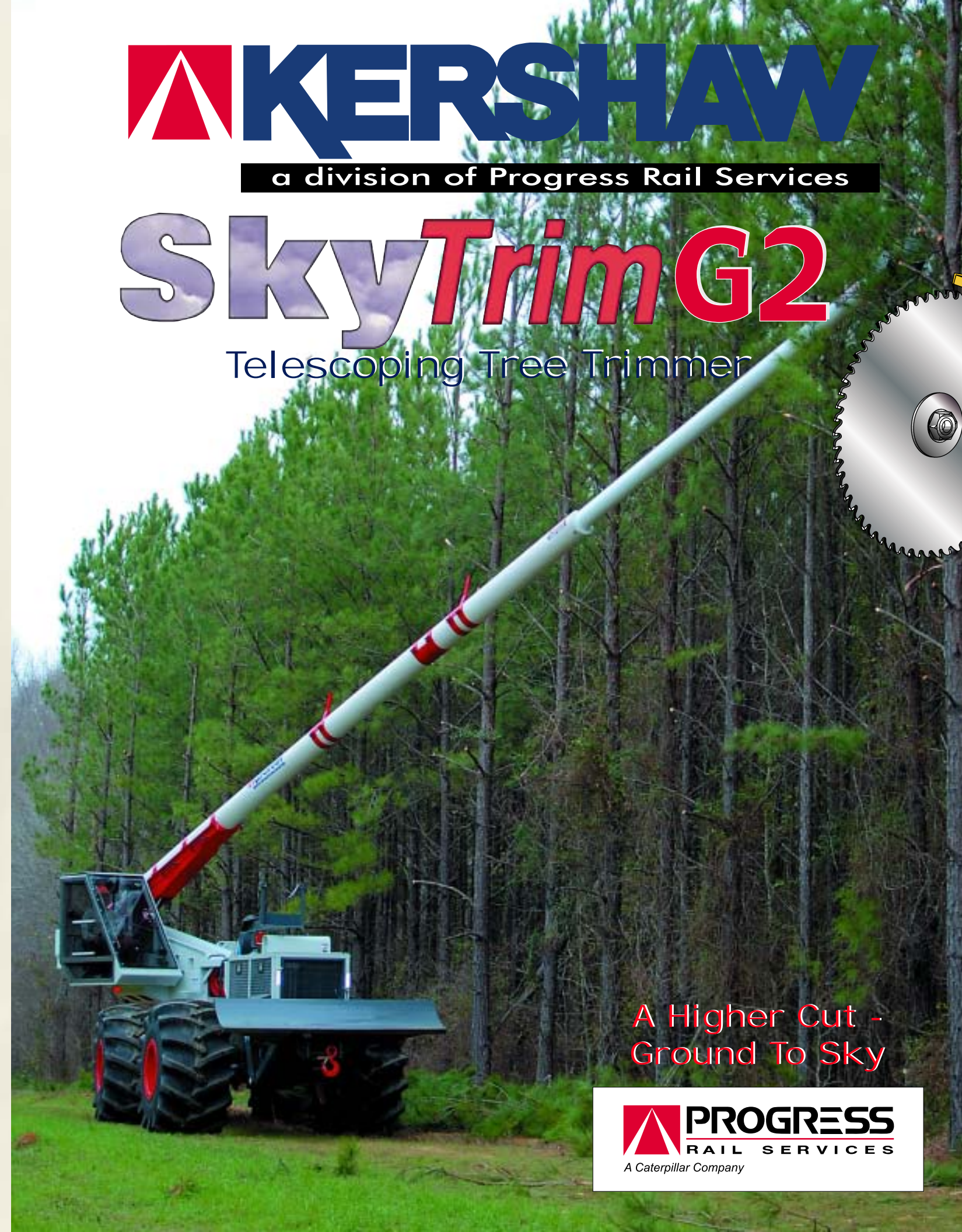
**ISO 9001:2000
REGISTERED**

KERSHAW

a division of Progress Rail Services

SkyTrim G2

Telescoping Tree Trimmer



A Higher Cut -
Ground To Sky

PROGRESS
RAIL SERVICES
A Caterpillar Company



CAB

Cab roof is equipped with 1-1/4" thick Lexgard® for visibility and maximum protection. Pilot pressure hydraulic joysticks reduce arm fatigue and control extend-lift-swing-tilt functions for boom. Ergonomically positioned foot propel control reduces operator leg fatigue during operation. Boom and cab swing 360° to trim at all quadrants. Optional air conditioner and heater available.



POWER TRAIN

Equipped with two-speed heavy-duty powershift transmission for shift-on-the-go capability and reliability. Hydrostatic four-wheel drive provides rough terrain negotiability. Rear axle is rigid mounted and front axle oscillates.

Heavy-duty axles equipped with internal wet disk service brakes. Separate parking brake is fail-safe spring-applied/hydraulic-released wet disk. Wet disk inboard service brakes are built-in the axles and ensure safe stopping capabilities every time. Separate parking brake prevents machine from rolling while parked.



BOOM

Boom extends to 75 feet to trim the tallest trees. Boom construction of fiberglass composite material is electrically insulated for safety. Equipped with single 24 inch diameter carbide tipped saw with direct hydraulic drive and limb deflectors.



CAB ACCESS

Cab access door is full length shatter-proof Lexgard® for operator protection and maximum visibility. Door design shields operator from limbs and flying debris for additional safety. Secure door latch ensures positive closure. The cab design offers an unmatched field-of-view.



TRACKED MODELS AVAILABLE

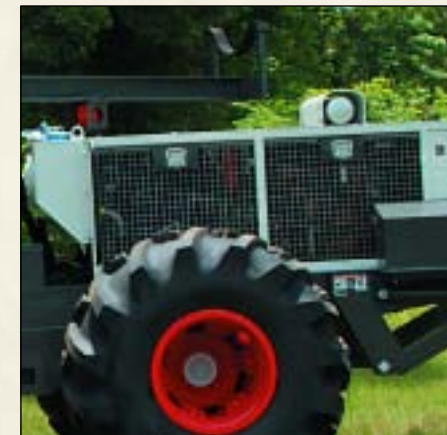


HI-RAIL MODELS AVAILABLE



TILT FEATURE

Upperstructure and cab are designed for 40° lateral tilt to either side to shift weight balance to allow flexibility in trimming and operation on inclines. The SkyTrim does not require outriggers or set-up time.



ENGINE COMPARTMENT

Engine compartment access doors are made of aircraft-grade composite material to allow easy handling and light weight. The composite material is extremely durable and stable. Open grid design allows maximum air circulation for engine. Positive easy-to-operate latches secure access doors.

The hydraulic reservoir is mounted outside the engine compartment allowing easy access to hydraulic pumps and other components. The reservoir includes clean-out ports and a shutoff valve. A hydraulic oil cooler insures reliable operation.



ADJUSTABLE WIDTH

Overall tire tread width with standard tires is adjustable from the 10 feet working width to 8 feet 6 inches travel width to allow easier transportation.



WINCH

Rear-mounted 20,000 lb. hydraulic winch with cab control provides extraction insurance in extreme wet terrain conditions. An additional front mounted winch is available as an option.



BLADE

Front mounted dozer-type blade is hydraulically operated from cab for clearing limbs and debris. Blade increases stability in the down position. Blade design will not inhibit ground clearance in up position.