



M318-HR Road/Rail Wheel Excavator

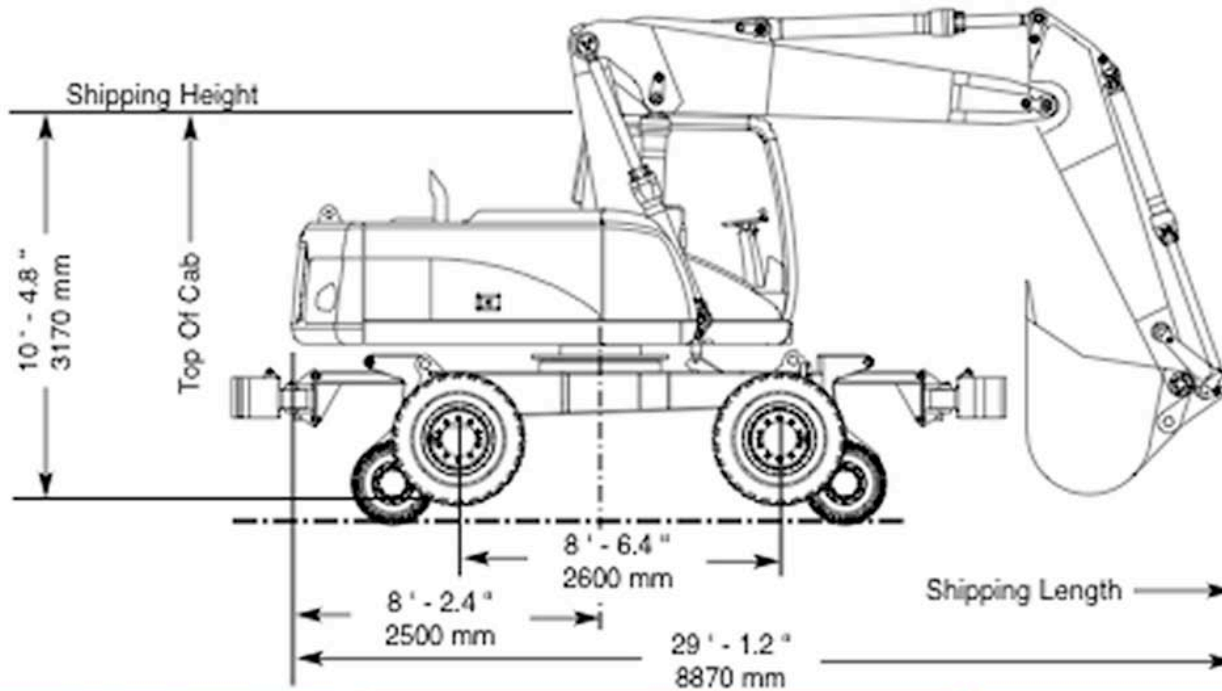
The M318-HR is a rubber tired vehicle equipped with hi-rails for performing a variety of railroad maintenance-of-way functions, both on and off track, by utilizing a wide range of attachments and options.



KERSHAW
a division of Progress Rail Services



M318-HR Road/Rail Wheel Excavator





M318-HR Road/Rail Wheel Excavator

Frame: All welded construction using plate steel and formed steel cross members.

Weight: 50,705 lbs. (23000 kg) with hi rail gear not including any boom attachment.

Engine: Caterpillar C6.6 w/ACERT technology, 177 hp (130 kW) @ 1800 rpm, 6.6 liters. Meets EU Stage IIIA.

Propel System: Hydrostatic drive with hydraulic motor driving a two-speed axle-mounted transmission. Propel with hi rail system is through friction drive using super single rubber tires. Maximum travel speed 23 mph (37 km/h) on road. Maximum travel speed 21 mph (35 km/h) on hi rails.

Transmission and Axles: Two-speed Powershift transmission mounted directly on rear axle driven by hydraulic motor. Two-piece propeller shaft drive to front axle. Two (2) rigid mounted CAT axles. Front axle is steering axle and oscillates \uparrow 9 degrees. 35 degrees maximum steering angle. Hi rail axle uses AP style railroad bearings. Hi rail system includes steering locks and oscillating axle lock.

Wheels, Brakes and Tires: 24" (609.6 mm) steel rail wheels. 18R19.5XF single pneumatic rubber tires with wheels bolted to each axle. Hydraulic disc brakes apply directly to the hubs. Hi rail includes rail sweeps to clear debris from top of rails in front of rail wheels.

Electrical System: 24 volt dc negative ground, 75 amp alternator, color coded and numbered wiring. Includes boom working light, road lights, and warning horn.

Hydraulic System: Engine-powered pump drive drives hydraulic pumps. Propel pump, auxiliary pump and swing pump. State-of-the-art load sense hydraulic system. Dedicated pump and piston motor powers the swing mechanism with 360 degrees of continuous rotation. Tool Control System allows operator selection of 10 pre-defined hydraulic work tools. Adjustable hydraulic controls sensitivity allows selection of four pre-defined levels of aggressiveness. Hydraulic cylinders use CAT cylinder snubber technology to cushion shocks, reduce sound and increase service life.

Cab: Fully enclosed, insulated, and pressurized. Isolation mounted for noise and vibration control. Automatic climate control controls temperature and air flow. Includes cigar lighter, ashtray, cup holder, magazine rack and mobile phone holder. 12 v.d.c, 7 amp power supply. Optional Falling Objects Guard Structure (FOGS) bolts to the cab. Large skylight provides upward visibility. A retractable sunscreen blocks direct sunlight.

Capacities: Fuel: 101.7 gal (385 liters), hydraulic: 44.9 gal (170 liters), engine crankcase: 3.9 gal (15 liters), cooling system: 8.5 gal (32 liters), transmission: 2.6 qt (2.5 liters).

Optional Equipment: Various buckets, hydraulic hammers, orange peel grapples, multi-grapples, shears, brushcutters, tie grabs, electro-magnet kits, vibratory plate compactors and others.

Because of Kershaw's continuous desire to improve products, specifications and design are subject to change at any time and without notice and without incurring any obligation to incorporate these changes in previous models. Illustrations and photographs may include optional equipment and may not include standard equipment.