

EMDEC 3 to EMDEC 4 Upgrade

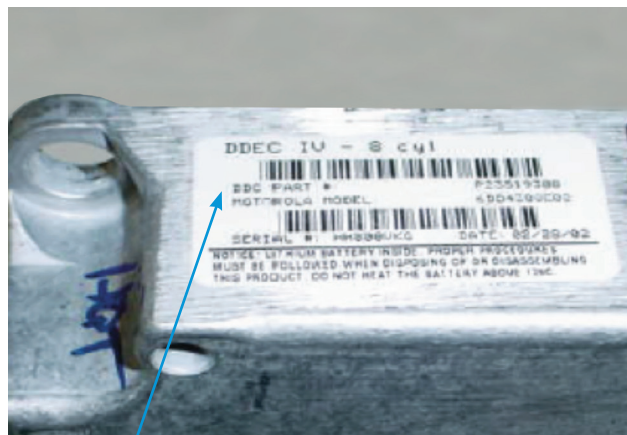
Effective January 1, 2014, EMD will be offering an upgrade program for EMDEC 3 to EMDEC 4.

If EMDEC 3 core is returned, the upgrade cost is \$100. The EMDEC 4 is backward compatible with the EMDEC 3 applications and has additional capacity for future upgrades.

Features & Benefits:

- Enhanced memory
- RailCAN capable
- Improved reliability
- Power Products EMDEC 4 Advantages
 - Supports the “customer calibration tool” to customize applications
 - CAN information is compatible with the PLC computer (easy Distributor System Integration)
 - Percent load parameter available to obtain more accurate engine power output information.
 - Rack stop function to control power output

The EMDEC 4 part number is 40107436.



Identification

Contact your customer service representative.
Immediate availability.

The EMD OEM Advantage

EMD replacement parts are the result of extensive development and testing in the same engineering facilities where new EMD engines are designed, built, and tested. This original equipment manufacturer (OEM) focus ensures the same performance, reliability, and durability for which EMD engines are legendary.

- OEM fuel injectors are fully remanufactured to precise internal specs versus partially rebuilt retrofits. EMD injectors have proven best fuel economy while maintaining emissions performance over their full useful life, which avoids the penalties and expense of non-conformance.
- Power Assemblies and all emissions critical components are the result of fully integrated OEM design versus partial substitution of non-optimized third party components. In addition, the Ultra Low Lube Oil Consumption Power Assemblies reduce oil consumption by 50 percent.
- Engines and critical subsystems are carefully calibrated to optimize performance, reduce emissions, and minimize fuel consumption.
- EMD emissions kits require no cumbersome catalyst retrofits, which can suffer from excessive backpressure, ash fouling and extreme temperatures.
- Since 1922, EMD has stood solidly behind its products. As the EPA certificate holder for its engines and kits, in-use emission compliance and engine performance is covered by the EMD OEM factory warranty.

A genuine EMD part is irreplaceable; depend on EMD for all Aftermarket Parts.