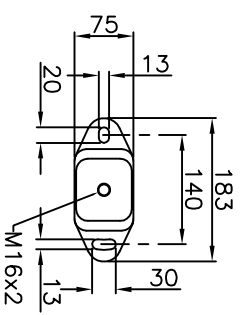
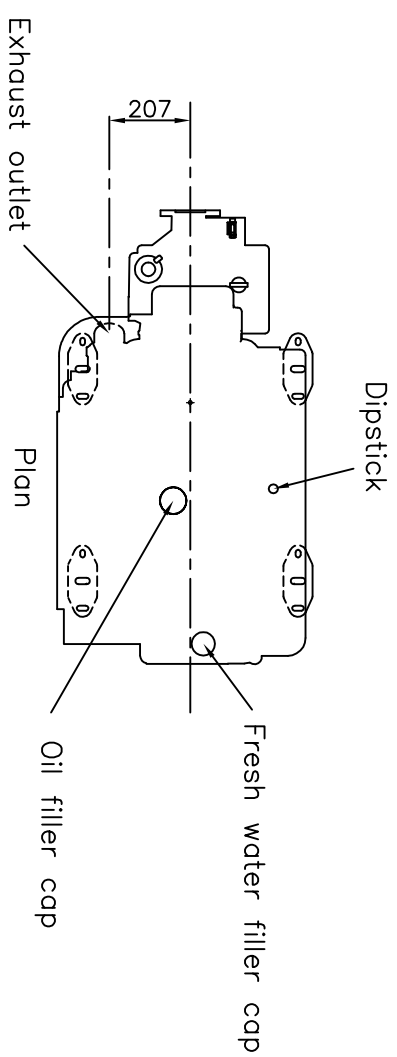


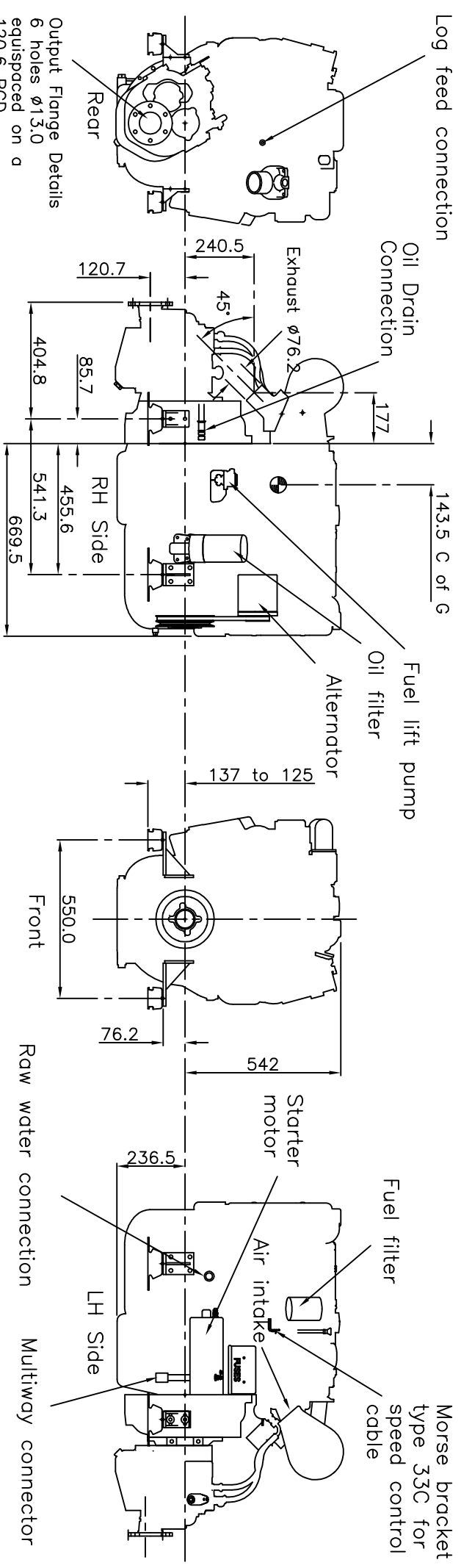
Perkins Sabre M92 Marine Diesel Engine shown with PRM 500D gearbox with reduction ratios up to and including 2:1 (550mm transverse mounting centres)

CATERPILLAR MARINE POWER UK LTD
 Wimborne, Dorset, England.
 Tel. +44(0)1202 893720
 Fax. +44(0)1202 851700
 E-mail. Wimborne_MPC_post@cat.com
 www.Perkins-Sabre.com



FLEXIBLE ENGINE MOUNT

Weights on each mount:
 Front - 108kg per mount
 Back - 141kg per mount
 Total Wet Weight - 498kg



Output Flange Details
 6 holes $\phi 13.0$
 equispaced on a
 120.6 PCD
 Flange OD 152.4
 Female location
 $\phi 76.175 / \phi 76.225$