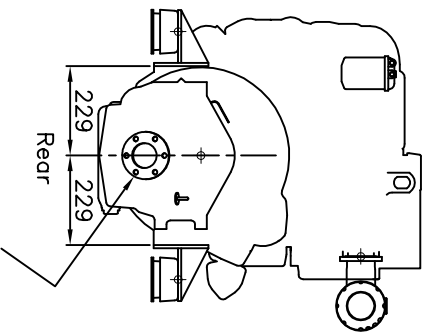
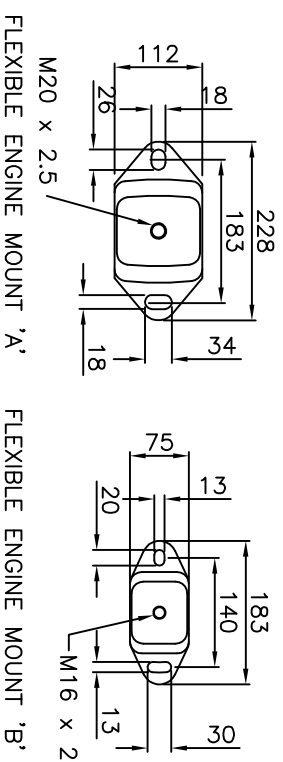
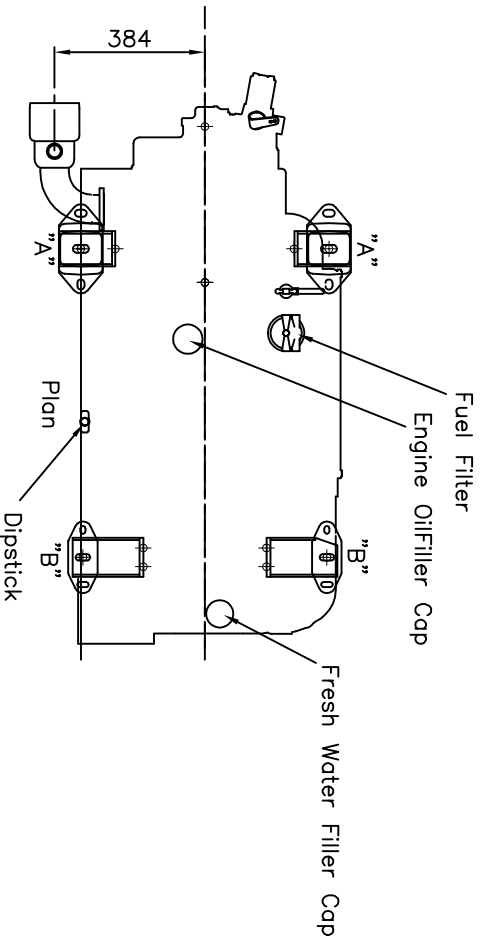
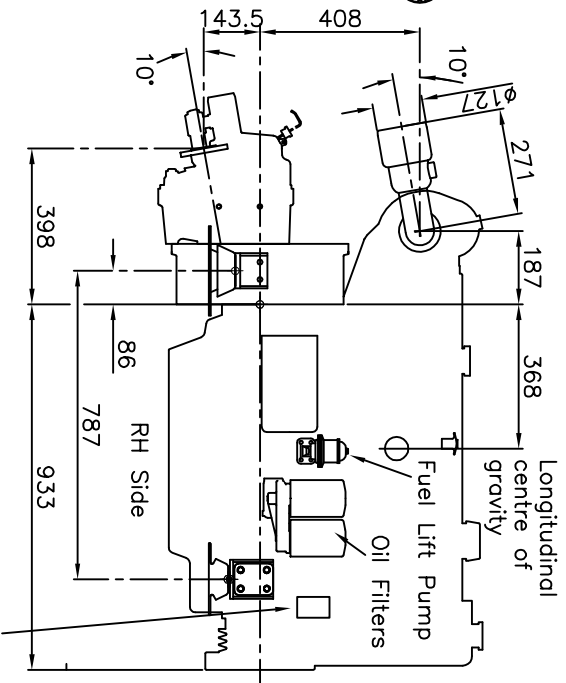


Perkins Sabre M265Ti and M300Ti Marine Diesel Engine  
 shown with the MPM 220A gearbox (Ratios up to and including 2:1)  
 (622 mm transverse mounting centres)

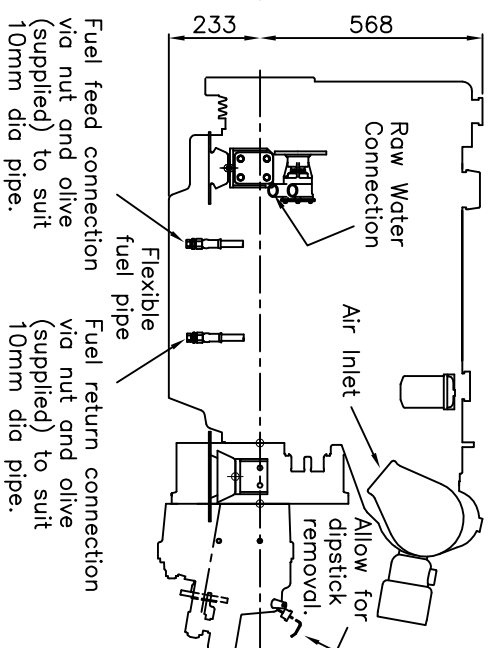
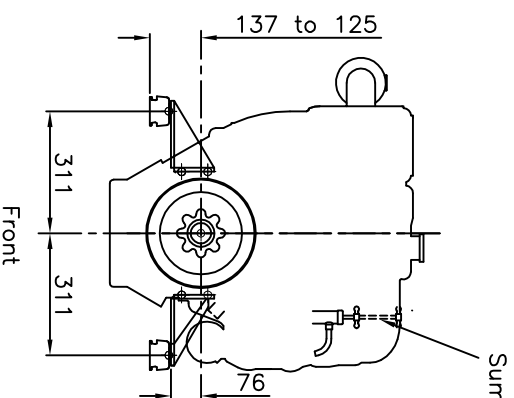
CATERPILLAR MARINE POWER UK LTD  
 Wimborne, Dorset, England.  
 Tel. +44(0)1202 893720  
 Fax. +44(0)1202 851700  
 E-mail. Wimborne\_MPC\_post@cat.com  
 www.Perkins-Sabre.com



Gearbox output flange  
 120.6 OD. 6 holes  $\phi$ 12.0  
 equispaced on a 98.4 PCD  
 Male location  $\phi$ 63.5 h7



Electrical Connection  
 to Instrument Panel



LH Side