



# Cat® D4K2

## TRACK-TYPE TRACTOR

### FEATURES:

- **Slope Indicate** – New grade control feature provides you slope of blade in cross slope direction and mainfall (fore/aft) direction without having to estimate.
- **Slope Assist** – New optional grade control feature which helps you more easily achieve the desired blade mainfall and cross slope automatically.
- **Stable Blade** – New blade control feature helps you obtain a finish grade with less operator effort.
- **Automatic Traction Control** – New traction control feature automatically reduces track slip without having to lift blade providing improved productivity and reduced undercarriage wear for lower operating costs.
- **Eco Mode** – New engine throttle settings reduce fuel consumption up to 25% to save you more money.
- **Heated and Ventilated Seat** – Experience a new level of comfort in all climates with the new optional heated and ventilated air suspension seat.
- **Power Pitch Blade** – This option lets the operator easily adjust the blade pitch to optimize productivity.
- **Engine** – Cat® C4.4 ACERT™ diesel engine.
- **Heated, Seat-Mounted Controls** – Heated joysticks (optional) offer even greater comfort in cold climates.
- **AccuGrade™** – Optional grade control system enables operators to cut and fill to grade with increased accuracy, minimizing the need for traditional stakes and grade checkers. Large AccuGrade monitor is built into the machine's dash for easy viewing during operation.
- **Undercarriage** – Choice of undercarriage to give you the lowest costs per hour. Select either the standard sealed and lubricated track (SALT) undercarriage or the innovative SystemOne™ undercarriage.

## Specifications D4K2

### Engine

Engine Model	Cat C4.4 ACERT
Rated Net Power @ 2,200 rpm	71.3 kW
Bore	105 mm
Stroke	127 mm
Displacement	4.4 L

### Weights

Operating Weight – XL	8450 kg
Operating Weight – LGP	8950 kg

- Specifications shown are for machine equipped with dozer blade, cab ROPS, back-up alarm, operator, coolant, lubricants and full fuel tank.

### Transmission

Drive Pumps	1
Track Motors	2
Relief Valve Settings	48 500 kPa
Maximum Travel Speed – Forward	9 km/h
Maximum Travel Speed – Reverse	10 km/h



オフロード法2014年  
基準適合



NETIS登録技術



# D4K2 Track-Type Tractor

## Undercarriage

Number of Rollers (each side)	7
Number of Shoes (each side) – Sealed and Lubricated Track (SALT) Undercarriage	43
Number of Shoes (each side) – SystemOne Undercarriage	38
Shoe Width – XL	460 mm
Shoe Width – LGP	635 mm
Length of Track on Ground – XL	2250 mm
Length of Track on Ground – LGP	2250 mm
Track Gauge – XL	1550 mm
Track Gauge – LGP	1725 mm
Ground Pressure – XL	41 kPa
Ground Pressure – LGP	31 kPa

## Hydraulic Controls

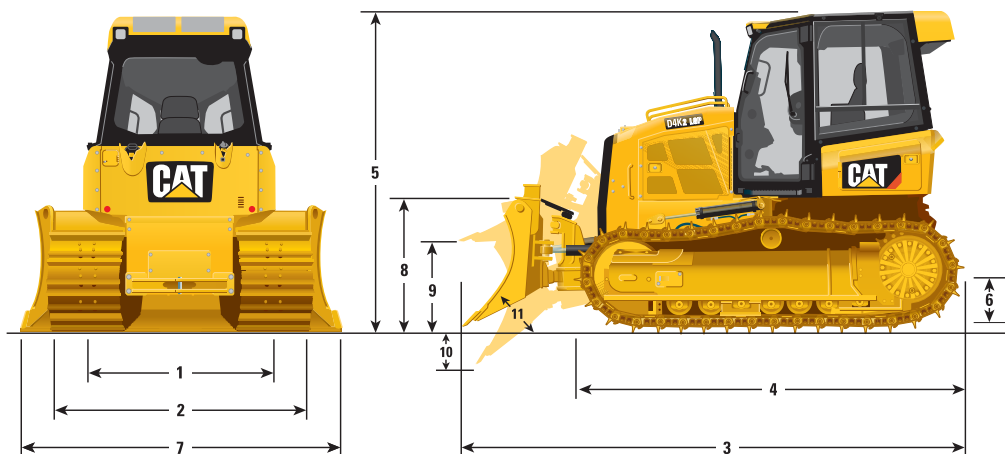
Pump Output	68 L/min
Relief Valve Settings	20 600 kPa

## Service Refill Capacities

Fuel Tank	195 L
Crankcase and Filter	11 L
Final Drives, XL (each side)	10 L
Final Drives, LGP (each side)	10 L
Cooling System	23 L
Transmission/Hydraulic Tank	60 L
Diesel Exhaust Fluid (DEF) Tank	19 L

## Ripper

Type	Parallelogram
Number of Shanks	3
Maximum Digging Depth	340 mm
Maximum Reach at Ground Line	595 mm
Maximum Ground Clearance Under Tip	450 mm
Overall Width	1710 mm
Height	165 mm
Weight	555 kg



## Dimensions

	XL	LGP
<b>1</b> Track Gauge	1550 mm	1725 mm
<b>2</b> Width of Tractor (standard shoes, no blade)	2010 mm	2360 mm
<b>3</b> Overall Length (with blade)	4275 mm	4275 mm
<b>4</b> Length of Basic Tractor (without blade)	3275 mm	3275 mm
<b>5</b> Tractor Height	2765 mm	2790 mm
<b>6</b> Ground Clearance	320 mm	315 mm
<b>BLADE</b>	<b>XL</b>	<b>LGP</b>
<b>7</b> Blade Width	2780 mm	3150 mm
<b>8</b> Blade Height	1010 mm	910 mm
<b>9</b> Blade Lift Height	745 mm	735 mm
<b>10</b> Digging Depth	575 mm	585 mm
<b>11</b> Blade Cutting Edge Angle, Adjustable	52° to 58°	52° to 58°
Maximum Tilt	385 mm	440 mm
Maximum Angle (either side)	24°	24°
Blade Width at Maximum Angle	2545 mm	2880 mm
Blade Capacity (SAE)	1.98 m <sup>3</sup>	1.85 m <sup>3</sup>



## STANDARD EQUIPMENT

### ELECTRICAL

- Alternator, 12 volt, 120 Amp, heavy duty brushless
- Alarm, backup
- Batteries, heavy duty, maintenance free
- Diagnostic connector
- Horn, electric
- Lights, halogen, 2 front and 2 rear
- Starter, electric, 12 volt

### OPERATOR STATION

- ROPS/FOPS cab with air conditioning
- Seat, air suspended, cloth
- Seatbelt, retractable 76 mm
- Foot pads, dash
- Electronic Monitoring System with:
  - Gauges for engine coolant temperature, hydraulic oil temperature and fuel level
  - Travel speed limiter, electronic
  - Engine RPM and gear display
  - Hour meter, electric
  - Engine air cleaner service indicator, electronic
  - Water-in-fuel indicator, electronic
- Slope Indicate
- Throttle switch, rotary
- Eco mode
- Controls, seat mounted, fore/aft adjustment
- Armrests, adjustable
- Mirror, rearview, inside
- Single pedal combining deceleration and braking functions
- Independent forward/reverse speed settings
- Power port, 12 volt
- Coat hook
- Storage compartment
- Cup holder
- Floor mat, rubber, heavy duty
- Radio, AM/FM, Bluetooth

### HYDRAULICS

- Hydraulics, 3 valve
- Load sensing hydraulics
- Single lever, three function control
- Hydraulic pump and oil
- Stable blade control

### POWER TRAIN

- Cat C4.4 ACERT diesel engine, turbocharged
- Aftercooler, Air-to-Air (ATAAC)
- Aluminum bar plate cooling system (radiator, power train)
- Air cleaner with precleaner, automatic dust ejection and under-hood intake
- Dual path, closed-loop hydrostatic transmission
- Electric fuel priming pump
- Fuel/water separator
- Automatic Traction Control
- Auto idling stop (NETIS)

### BLADE

- VPAT XL blade
- VPAT LGP blade

### UNDERCARRIAGE

- SALT Undercarriage
- 7 roller track frame
- Track rollers, lifetime lubricated
- Carrier rollers
- Track adjusters, hydraulic
- Guards, front/rear guiding
- Master link
- Track Pairs, XL:
  - Track, 460 mm MS SALT
- Track Pairs, LGP:
  - Track, 635 mm APEX SALT

### OTHER STANDARD EQUIPMENT

- Cat Product Link™ PL641 Cellular
- C-Frame, VPAT, hydraulic cylinders and lines
- Lockable engine enclosures
- Front pull device
- Rigid drawbar
- Ecology drains (engine, power train and implement oil and engine coolant)
- Scheduled oil sampling ports (engine, power train implement oil)

### ANTIFREEZE

- Extended life coolant, -37° C



# D4K2 Track-Type Tractor

## OPTIONAL EQUIPMENT

### ELECTRICAL

- Integrated four front halogen lights, two rear halogen lights

### POWER TRAIN

- Drive, auxiliary
- Installation, winch

### UNDERCARRIAGE

- Track Pairs, XL:
  - Track, 460 mm MS SystemOne
- Track Pairs, LGP:
  - Track, 460 mm MS SystemOne
  - Track, 635 mm MS SystemOne
  - Track, 460 mm MS SALT
  - Track, 635 mm MS SALT

### OPERATOR STATION

- Canopy
- Cab, polycarbonate windows and air conditioning
- Seat, vinyl air suspension, choice of:
  - Vinyl, heated seat with heated controls
  - Cloth, heated seat with heated controls
  - Cloth, heated and ventilated seat with heated controls

### HYDRAULICS

- Hydraulics, 4 valve for use with ripper

### GUARDS

- Guard, bottom, heavy duty
- Guard, rear, heavy duty
- Grill, radiator, heavy duty
- Guard, track guiding, center
- Guard, track roller, full length
- Screen, rear, cab
- Screen, side, cab
- Screen, rear, canopy
- Screen, front and doors, canopy
- Sweeps, front
- Sweeps, rear

### BLADES

- VPAT XL blade (AccuGrade)
- VPAT LGP blade (AccuGrade)
- VPAT Intermediate blade
- VPAT Intermediate blade (AccuGrade)

### REAR ATTACHMENTS

- Drawbar, towing
- Ripper, parallelogram, includes three shanks and teeth

### REAR ATTACHMENT CONTROL

- Control, ripper

### MACHINE CONTROL AND GUIDANCE

- Installation, AccuGrade ready, includes Cat Grade Control Slope Assist
- Power Pitch blade control

### STARTING AIDS

- Heater, engine, coolant, 120 volt
- Starting aid, ether

### OTHER ATTACHMENTS

- Front counterweight (300 kg)
- Machine Security System

### ANTIFREEZE

- Extended life coolant, -50° C

For more complete information on Cat products, dealer services, and industry solutions, visit us on the web at [www.cat.com](http://www.cat.com)

© 2015 Caterpillar  
All rights reserved

Materials and specifications are subject to change without notice. Featured machines in photos may include additional equipment. See your Cat dealer for available options.

CAT, CATERPILLAR, SAFETY.CAT.COM, their respective logos, "Caterpillar Yellow" and the "Power Edge" trade dress, as well as corporate and product identity used herein, are trademarks of Caterpillar and may not be used without permission.

Based on the Labor, Safety and Health Laws in Japan, employer of small construction equipment are required to provide specific training for all operators on machines with ship weight less than 3 metric ton. For machines greater than 3 metric ton, operator needs to obtain operator license certification from a Government approved registered training school.

AEHQ7494-02 (12-2015)  
Replaces AEHQ7494-01  
(Japan)

