



# Cat® D5K2

## TRACK-TYPE TRACTOR

### FEATURES:

- **Slope Indicate** – New grade control feature provides you slope of blade in cross slope direction and mainfall (fore/aft) direction without having to estimate.
- **Slope Assist** – New optional grade control feature which helps you more easily achieve the desired blade mainfall and cross slope automatically.
- **Stable Blade** – New blade control feature helps you obtain a finish grade with less operator effort.
- **Automatic Traction Control** – New traction control feature automatically reduces track slip without having to lift blade providing improved productivity and reduced undercarriage wear for lower operating costs.
- **Eco Mode** – New engine throttle settings reduce fuel consumption up to 20% to save you more money.
- **Heated and Ventilated Seat** – Experience a new level of comfort in all climates with the new optional heated and ventilated air suspension seat.
- **Power Pitch Blade** – This option lets the operator easily adjust the blade pitch to optimize productivity.
- **Engine** – Cat® C4.4 ACERT™ diesel engine.
- **Heated, Seat-Mounted Controls** – Heated joysticks (optional) offer even greater comfort in cold climates.
- **AccuGrade™** – Optional grade control system enables operators to cut and fill to grade with increased accuracy, minimizing the need for traditional stakes and grade checkers. Large AccuGrade monitor is built into the machine's dash for easy viewing during operation.
- **Undercarriage** – Choice of undercarriage to give you the lowest costs per hour. Select either the standard sealed and lubricated track (SALT) undercarriage or the innovative SystemOne™ undercarriage.

## Specifications D5K2

### Engine

Engine Model	Cat C4.4 ACERT
Rated Net Power @ 2,200 rpm	79.0 kW
Bore	105 mm
Stroke	127 mm
Displacement	4.4 L

### Transmission

Drive Pumps	1
Track Motors	2
Relief Valve Settings	48 500 kPa
Maximum Travel Speed – Forward	9 km/h
Maximum Travel Speed – Reverse	10 km/h

### Weights

Operating Weight – XL	9500 kg
Operating Weight – LGP	10 350 kg
• Specifications shown are for machine equipped with dozer blade, cab ROPS, back-up alarm, operator, coolant, lubricants and full fuel tank.	

### Undercarriage

Number of Rollers (each side)	7
Number of Shoes (each side) – Sealed and Lubricated Track (SALT) Undercarriage	40
Number of Shoes (each side) – SystemOne Undercarriage	36
Shoe Width – XL	510 mm
Shoe Width – LGP	770 mm
Length of Track on Ground – XL	2310 mm
Length of Track on Ground – LGP	2310 mm
Track Gauge – XL	1600 mm
Track Gauge – LGP	1860 mm
Ground Pressure – XL	40 kPa
Ground Pressure – LGP	29 kPa



オフロード法2014年  
基準適合



国土交通省指定  
低騒音型建設機械



NETIS登録技術



2020年燃費基準

# D5K2 Track-Type Tractor

## Service Refill Capacities

Fuel Tank	195 L
Crankcase and Filter	11 L
Final Drives, XL (each side)	10 L
Final Drives, LGP (each side)	10 L
Cooling System	23 L
Transmission/Hydraulic Tank	60 L
Diesel Exhaust Fluid (DEF) Tank	19 L

## Hydraulic Controls

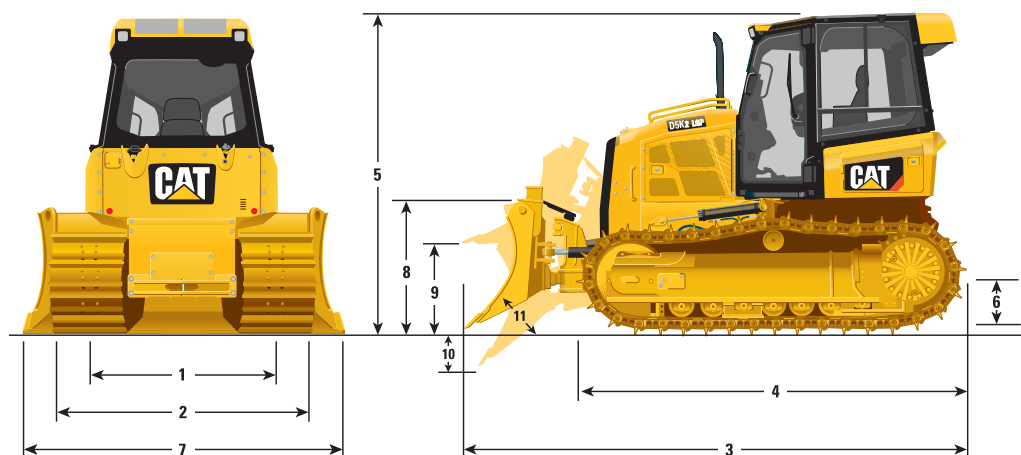
Pump Output	68 L/min
Relief Valve Settings	20 600 kPa

## Ripper

Type	Parallelogram
Number of Shanks	3
Maximum Digging Depth	340 mm
Maximum Reach at Ground Line	555 mm
Maximum Ground Clearance Under Tip	450 mm
Overall Width	1710 mm
Height	165 mm
Weight	555 kg

## Winch

Weight	610 kg
Winch Drive	Hydrostatic
Control	Hydraulic
Speed	Variable
Winch Length	705 mm
Overall Width	740 mm
Drum Diameter	255 mm
Drum Width	275 mm
Throat Clearance	170 mm
Rope Diameter – recommended	16 mm
Rope Diameter – optional	19 mm
Drum Capacity – recommended cable	113 m
Drum Capacity – optional cable	78 m
Maximum Line Pull – bare drum	18 145 kg
Maximum Line Pull – full drum	11 340 kg
Maximum Line Speed – bare drum	40 m/min
Maximum Line Speed – full drum	63 m/min



## Dimensions

	XL	LGP
<b>1</b> Track Gauge	1600 mm	1860 mm
<b>2</b> Width of Tractor (standard shoes, no blade)	2110 mm	2630 mm
<b>3</b> Overall Length (with blade)	4310 mm	4310 mm
<b>4</b> Length of Basic Tractor (without blade)	3265 mm	3265 mm
<b>5</b> Tractor Height	2770 mm	2795 mm
<b>6</b> Ground Clearance	320 mm	315 mm
<b>BLADE</b>	<b>XL</b>	<b>LGP</b>
<b>7</b> Blade Width	2780 mm	3220 mm
<b>8</b> Blade Height	1075 mm	1010 mm
<b>9</b> Blade Lift Height	770 mm	760 mm
<b>10</b> Digging Depth	585 mm	595 mm
<b>11</b> Blade Cutting Edge Angle, Adjustable	52° to 58°	52° to 58°
Maximum Tilt	400 mm	450 mm
Maximum Angle (either side)	24°	24°
Blade Width at Maximum Angle	2545 mm	2945 mm
Blade Capacity (SAE)	2.19 m³	2.34 m³

## STANDARD EQUIPMENT

---

### ELECTRICAL

- Alternator, 12 volt, 120 Amp, heavy duty brushless
- Alarm, backup
- Batteries (2), heavy duty, maintenance free
- Diagnostic connector
- Horn, electric
- Lights, halogen, 2 front and 2 rear
- Starter, electric, 12 volt

### OPERATOR STATION

- ROPS/FOPS cab with air conditioning
- Seat, air suspended, cloth
- Seatbelt, retractable 76 mm
- Foot pads, dash
- Electronic Monitoring System with:
  - Gauges for engine coolant temperature, hydraulic oil temperature and fuel level
  - Travel speed limiter, electronic
  - Engine RPM and gear display
  - Hour meter, electric
  - Engine air cleaner service indicator, electronic
  - Water-in-fuel indicator, electronic
- Slope Indicate
- Throttle switch, rotary
- Eco mode
- Controls, seat mounted, fore/aft adjustment
- Armrests, adjustable
- Mirror, rearview, inside
- Single pedal combining deceleration and braking functions
- Independent forward/reverse speed settings
- Power port, 12 volt
- Coat hook
- Storage compartment
- Cup holder
- Floor mat, rubber, heavy duty
- Radio, AM/FM, Bluetooth
- Sound suppression

### HYDRAULICS

- Hydraulics, 3 valve
- Load sensing hydraulics
- Single lever, three function control
- Hydraulic pump and oil
- Stable blade control

### POWER TRAIN

- Cat C4.4 ACERT diesel engine, turbocharged
- Aftercooler, Air-to-Air (ATAAC)
- Aluminum bar plate cooling system (radiator, power train)
- Air cleaner with precleaner, automatic dust ejection and under-hood intake
- Dual path, closed-loop hydrostatic transmission
- Electric fuel priming pump
- Fuel/water separator
- Automatic Traction Control
- Auto idling stop (NETIS)

### BLADE

- VPAT XL blade
- VPAT LGP blade

### UNDERCARRIAGE

- SALT Undercarriage
- 7 roller track frame
- Track rollers, lifetime lubricated
- Carrier rollers
- Track adjusters, hydraulic
- Guards, front/rear guiding
- Master link
- Track Pairs, XL:
  - Track, 510 mm MS SALT
- Track Pairs, LGP:
  - Track, 770 mm APEX SALT

### OTHER STANDARD EQUIPMENT

- Cat Product Link™ PL641 Cellular
- C-Frame, VPAT, hydraulic cylinders and lines
- Lockable engine enclosures
- Front pull device
- Rigid drawbar
- Ecology drains (engine, power train and implement oil and engine coolant)
- Scheduled oil sampling ports (engine, power train implement oil)

### ANTIFREEZE

- Extended life coolant, -37° C

# D5K2 Track-Type Tractor

## OPTIONAL EQUIPMENT

### ELECTRICAL

- Integrated four front halogen lights, two rear halogen lights

### POWER TRAIN

- Drive, auxiliary
- Installation, winch

### UNDERCARRIAGE

- Track Pairs, XL:
  - Track, 510 mm MS SystemOne
- Track Pairs, LGP:
  - Track, 760 mm MS SystemOne
  - Track, 760 mm MS SALT

### OPERATOR STATION

- Canopy
- Cab, polycarbonate windows and air conditioning
- Seat, vinyl air suspension, choice of:
  - Vinyl, heated seat with heated controls
  - Cloth, heated seat with heated controls
  - Cloth, heated and ventilated seat with heated controls

### HYDRAULICS

- Hydraulics, 4 valve for use with ripper
- Hydraulics, 4 valve for use with winch

### GUARDS

- Guard, bottom, heavy duty
- Guard, rear, heavy duty
- Grill, radiator, heavy duty
- Guard, track guiding, center
- Guard, track roller, full length
- Screen, rear, cab
- Screen, side, cab
- Screen, rear, canopy
- Screen, front and doors, canopy
- Sweeps, front
- Sweeps, rear

### BLADES

- VPAT XL blade (AccuGrade)
- VPAT LGP blade (AccuGrade)
- VPAT Intermediate blade
- VPAT Intermediate blade (AccuGrade)
- VPAT Forestry blade (Brush Guard)

### REAR ATTACHMENTS

- Drawbar, towing
- Mounting, winch
- Ripper, parallelogram, includes three shanks and teeth

### REAR ATTACHMENT CONTROL

- Control, ripper
- Control, winch

### MACHINE CONTROL AND GUIDANCE

- Installation, AccuGrade ready, includes Cat Grade Control Slope Assist
- Power Pitch blade control

### STARTING AIDS

- Heater, engine, coolant, 120 volt
- Starting aid, ether

### OTHER ATTACHMENTS

- Front counterweight (300 kg)
- Machine Security System

### ANTIFREEZE

- Extended life coolant, -50° C

### FIELD INSTALLED ATTACHMENT

- Winch, hydrostatic

For more complete information on Cat products, dealer services, and industry solutions, visit us on the web at [www.cat.com](http://www.cat.com)

© 2015 Caterpillar  
All rights reserved

Materials and specifications are subject to change without notice. Featured machines in photos may include additional equipment. See your Cat dealer for available options.

CAT, CATERPILLAR, SAFETY.CAT.COM, their respective logos, "Caterpillar Yellow" and the "Power Edge" trade dress, as well as corporate and product identity used herein, are trademarks of Caterpillar and may not be used without permission.

Based on the Labor, Safety and Health Laws in Japan, employer of small construction equipment are required to provide specific training for all operators on machines with ship weight less than 3 metric ton. For machines greater than 3 metric ton, operator needs to obtain operator license certification from a Government approved registered training school.

AEHQ7495-02 (12-2015)  
Replaces AEHQ7495-01  
(Japan)

