



Cat[®] 272D2 XHP

SKID STEER LOADER

FEATURES:

The Cat[®] 272D2 XHP Skid Steer Loader, with its powerful engine, high output hydraulic system, high lift forces and vertical lift design, provides the maximum performance for work tool productivity, digging, truck loading and material handling. The 272D2 XHP features the following:

- **Industry leading sealed and pressurized cab option** provides a cleaner and quieter operating environment with excellent work tool visibility.
- **Standard high-back, heated, air ride seat with seat mounted adjustable joystick controls** makes Cat Skid Steer Loaders the industry leader in operator comfort.
- **High performance power train** provides maximum performance and production capability through the Electronic Torque Management system, standard two speed travel and an electronic hand/foot throttle with decel pedal capability.
- **XHP hydraulic system** provides high flow and high pressure that delivers industry leading hydraulic horsepower to efficiently run even the most power hungry work tools.
- **Electronically controlled Cat C3.8 engine** provides high horsepower and torque while meeting U.S. EPA Tier 4 Final/EU Stage IV emission standards.
- **Cat "Intelligent Leveling" system (ILEV)** provides industry leading technology, integration and features such as dual direction self level, work tool return to dig and work tool positioner.
- **Standard Speed Sensitive Ride Control system** improves operation on rough terrain, enabling better load retention, increased productivity and greater operator comfort.
- **Maximize machine capability and control** with the standard Advanced Display providing on-screen adjustments for implement response, hystat response and creep control. Also features multi-language functionality with customizable layouts, security system and rearview camera.
- **Ground level access** to all daily service and routine maintenance points helps reduce machine downtime for greater productivity.
- **Broad range of performance matched Cat Work Tools** make the Cat Skid Steer Loader the most versatile machine on the job site.

Specifications

Engine

| | | |
|------------------------------------|----------------------|---------------------|
| Engine Model | Cat C3.8 DIT (turbo) | |
| Gross Power SAE J1995 | 82 kW | 110 hp |
| Net Power SAE 1349 | 79 kW | 106 hp |
| Net Power ISO 9249 | 80 kW | 107 hp |
| Peak Torque at 1,500 rpm SAE J1995 | 374 N-m | 276 lbf-ft |
| Displacement | 3.8 L | 232 in ³ |
| Stroke | 120 mm | 4.7 in |
| Bore | 100 mm | 3.9 in |

Weights*

| | | |
|------------------|---------|----------|
| Operating Weight | 4198 kg | 9,255 lb |
|------------------|---------|----------|

Power Train

| | | |
|------------------------------------|-----------|----------|
| Travel Speed (Forward or Reverse): | | |
| One Speed | 11.6 km/h | 7.2 mph |
| Two Speed | 16.6 km/h | 10.3 mph |

Operating Specifications*

| | | |
|--|---------|----------|
| Rated Operating Capacity | 1656 kg | 3,650 lb |
| Rated Operating Capacity with Optional Counterweight | 1769 kg | 3,900 lb |
| Tipping Load | 3311 kg | 7,300 lb |
| Breakout Force, Tilt Cylinder | 3339 kg | 7,362 lb |
| Breakout Force, Lift Cylinder | 2760 kg | 6,085 lb |

Hydraulic System

| | | |
|-----------------------------------|------------|------------|
| Hydraulic Flow – XHP: | | |
| Maximum Loader Hydraulic Pressure | 28 000 kPa | 4,061 psi |
| Maximum Loader Hydraulic Flow† | 150 L/min | 40 gal/min |
| Hydraulic Power (calculated) | 70 kW | 94 hp |
| Standard Flow Mode: | | |
| Loader Hydraulic Pressure | 23 000 kPa | 3,335 psi |
| Loader Hydraulic Flow | 86 L/min | 23 gal/min |
| Hydraulic Power (calculated) | 33 kW | 44 hp |

†When equipped with Cat 400 Series work tools.

Cab

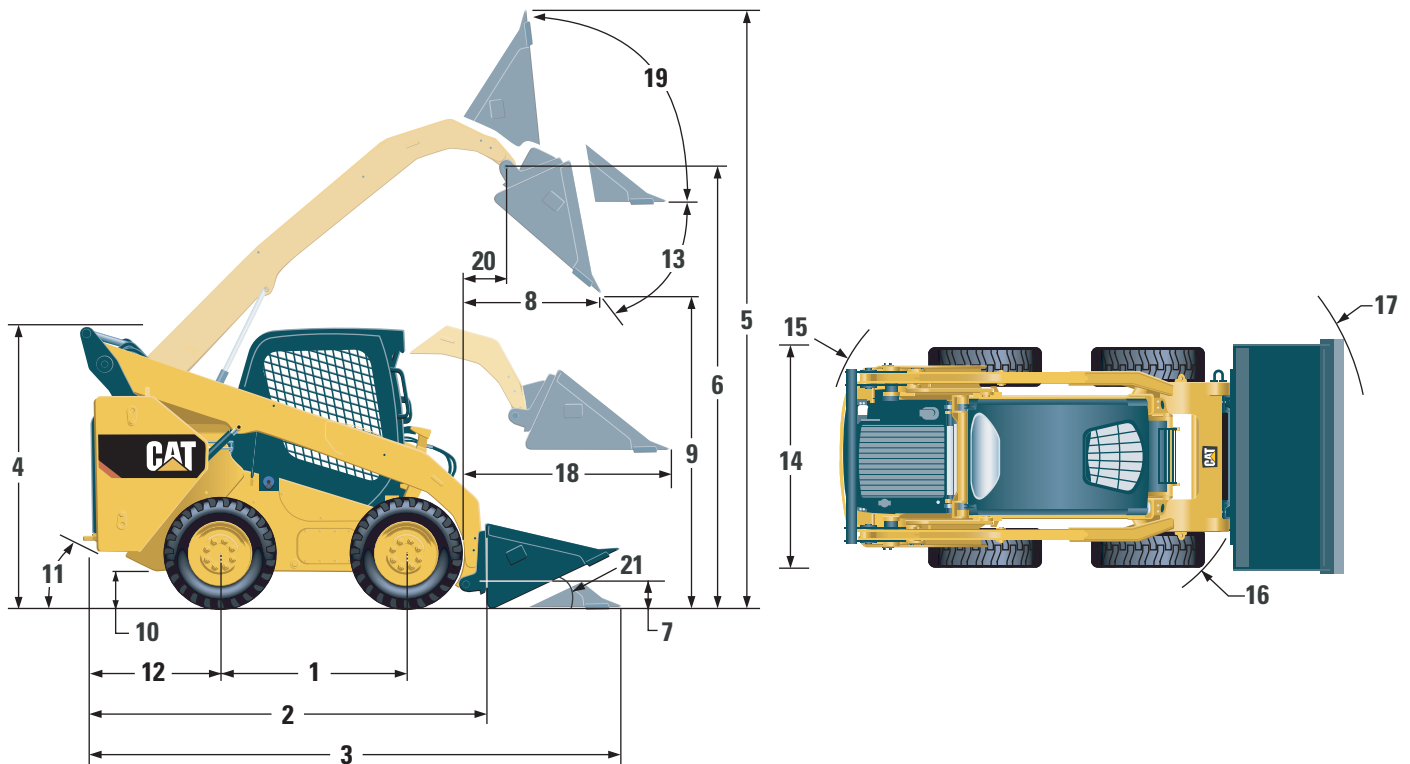
| | |
|---------------|------------------------|
| ROPS | ISO 3471:2008 |
| FOPS | ISO 3449:2005 Level I |
| FOPS Level II | ISO 3449:2005 Level II |

Service Refill Capacities

| | | |
|---------------------------------|--------|----------|
| Chain Box, each side | 10.2 L | 2.7 gal |
| Cooling System | 16 L | 4.1 gal |
| Diesel Exhaust Fluid (DEF) Tank | 19 L | 5 gal |
| Engine Crankcase | 13 L | 3.5 gal |
| Fuel Tank | 122 L | 32.2 gal |
| Hydraulic System | 55 L | 14.5 gal |
| Hydraulic Tank | 39 L | 10.3 gal |



272D2 XHP Skid Steer Loader



Dimensions*

| | | | |
|----|--|---------|----------|
| 1 | Wheelbase | 1386 mm | 54.6 in |
| 2 | Length without Bucket | 3226 mm | 127.0 in |
| 3 | Length with Bucket on Ground | 3937 mm | 155.0 in |
| 4 | Height to Top of Cab | 2133 mm | 84.0 in |
| 5 | Maximum Overall Height | 4103 mm | 161.5 in |
| 6 | Bucket Pin Height at Maximum Lift | 3265 mm | 128.6 in |
| 7 | Bucket Pin Height at Carry Position | 235 mm | 9.3 in |
| 8 | Reach at Maximum Lift and Dump | 736 mm | 29.0 in |
| 9 | Clearance at Maximum Lift and Dump | 2474 mm | 97.4 in |
| 10 | Ground Clearance | 263 mm | 10.4 in |
| 11 | Departure Angle | | 28° |
| 12 | Bumper Overhang behind Rear Axle | 1175 mm | 46.2 in |
| 13 | Maximum Dump Angle | | 51° |
| 14 | Vehicle Width over Tires | 1930 mm | 76.0 in |
| 15 | Turning Radius from Center - Machine Rear | 1899 mm | 74.7 in |
| 16 | Turning Radius from Center - Coupler | 1466 mm | 57.7 in |
| 17 | Turning Radius from Center - Bucket (racked) | 2301 mm | 90.6 in |
| 18 | Maximum Reach with Arms Parallel to Ground | 1246 mm | 49.1 in |
| 19 | Rack Back Angle at Maximum Height | | 84° |
| 20 | Bucket Pin Reach at Maximum Lift | 344 mm | 13.5 in |
| 21 | Roll Back Angle | | 28° |

*Operating Weight, Operating Specifications and Dimensions all based on 75 kg (165 lb) operator, all fluids, two speed, ride control, enclosed cab with glass door, side windows, air conditioning, air ride seat, advanced display, rearview camera, 1,000 CCA battery, dual direction self level, 1981 mm (78 in) dirt bucket, no optional counterweights, Cat PC 14 × 17.5 tires and manual quick coupler (unless otherwise noted).

MANDATORY EQUIPMENT

- Quick Coupler, Mechanical or Electric
- Seat Belt, 50 mm (2 in) or 75 mm (3 in)

PERFORMANCE PACKAGE

- Performance Package H3: *XHP Hydraulics, Dual Direction Electronic Self Level (Raise and Lower), Work Tool Return to Dig, Work Tool Positioner, Electronic Snubbing (Raise and Lower)*

STANDARD EQUIPMENT

ELECTRICAL

- 12 volt Electrical System
- 100 ampere Alternator
- Ignition Key Start/Stop Switch
- Lights: *Gauge Backlighting, Two Rear Tail Lights, Two Rear Halogen Working Lights, Two Adjustable Front Halogen Lights, Dome Light*
- Backup Alarm
- Heavy Duty Battery, 1,000 CCA, with Battery Disconnect

OPERATOR ENVIRONMENT

- Gauges: *Fuel Level, DEF Level, Hour Meter*
- Operator Warning System Indicators: *Air Filter Restriction, Alternator Output, Armrest Raised/Operator Out of Seat, Engine Coolant Temperature, Engine Oil Pressure, Air Inlet Heater Activation, Hydraulic Filter Restriction, Hydraulic Oil Temperature, Park Brake Engaged, Engine Emission System*
- High Back Cloth Seat with Air Suspension, Heated with Recline and Lumbar Support and Fully Adjustable Seat Mounted Controls
- Fold In Ergonomic Contoured Armrest
- Control Interlock System, when operator leaves seat or armrest raised: *Hydraulic System Disables, Hydrostatic Transmission Disables, Parking Brake Engages*
- ROPS Cab, Enclosed, Tilt Up
- FOPS, Level I
- Top, Rear and Side Windows
- Headliner, Deluxe
- Floor Mat
- Interior Rearview Mirror
- 12 volt Electric Socket
- Horn
- Hand (Dial) and Foot Throttle, Electronic with Decel Feature
- Advanced Display: *Full Color, 127 mm (5 in) LCD Screen, Advanced Multi-operator Security System, On-screen Adjustments for Implement Response, Hystat Drive Response, and Creep Control; Rearview Camera Included*
- Storage Compartment with Netting

OPTIONAL ATTACHMENTS

- Beacon, Rotating
- Engine Block Heater – 120V
- Oil, Hydraulic, Cold Operation
- Paint, Custom
- Variable Speed Demand Fan with Reversing Functionality

COMFORT PACKAGE

- Enclosed ROPS with A/C (C3): *Foot Throttle, Headliner, Heater and Defroster, Side Windows, Cup Holder, Radio Ready, Air Ride Seat (High Back and Heated) and Door (Glass or Polycarbonate)*

POWER TRAIN

- Cat C3.8, Turbo Diesel Engine, Meeting Tier 4 Final/Stage IV Emission Standards
- Air Cleaner, Dual Element, Radial Seal
- S-O-SSM Sampling Valve, Hydraulic Oil
- Filters, Cartridge-type, Hydraulic
- Filters, Cartridge-type, Fuel and Water Separator
- Radiator/Hydraulic Oil Cooler (side-by-side)
- Spring Applied, Hydraulically Released Parking Brakes
- Hydrostatic Transmission, Two Speed with Speed Sensitive Ride Control
- Four Wheel Chain Drive, 14 × 17.5 Tires

OTHER

- Engine Enclosure, Lockable
- Extended Life Antifreeze, –37° C (–34° F)
- Machine Tie Down Points (6)
- Support, Lift Arm
- Hydraulic Oil Level Sight Gauge
- Radiator Coolant Level Sight Gauge
- Radiator, Expansion Bottle
- Cat ToughGuard™ Hose
- Auxiliary, Hydraulics, Continuous Flow
- Heavy Duty, Flat Faced Quick Disconnects with Integrated Pressure Release
- Split D-Ring to Route Work Tool Hoses Along Side of Left Lift Arm
- Electrical Outlet, Beacon
- Belly Pan Cleanout
- Variable Speed Demand Fan

272D2 XHP Skid Steer Loader

For more complete information on Cat products, dealer services, and industry solutions, visit us on the web at www.cat.com

© 2015 Caterpillar
All Rights Reserved

Materials and specifications are subject to change without notice. Featured machines in photos may include additional equipment. See your Cat dealer for available options.

CAT, CATERPILLAR, SAFETY.CAT.COM, their respective logos, "Caterpillar Yellow" and the "Power Edge" trade dress, as well as corporate and product identity used herein, are trademarks of Caterpillar and may not be used without permission.

AEHQ7439 (03-15)
(NACD, EU, ANZ)

