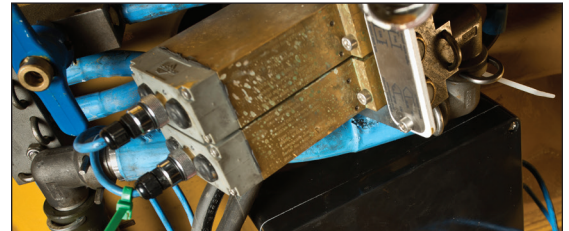


# Cat<sup>®</sup>

## DOUBLE 3/2-WAY SOLENOID VALVE



**Description:** The double 3/2-way directional control valve NG 0.5 is a pilot valve and is used exclusively for the activation of valves with larger-sized nominal widths. The pilot valve is to be operated only with the corresponding dual magnet and the respective activation electronics. The valve is suitable for block setup and is fastened with two M6 socket head screws. The hydraulic power supply to the valve is accomplished through bore holes aligned in the flange surface. In zero position, i.e. in non-switched position, the pressure port P is disconnected from the consumer connection.



### Characteristic Values

Allocation in accordance with Directive 2006/42/EG (ATEX)	
	Group I, Category M2
Protection Type	Ex ib I Mb
Plug-in Type	OS4
Magnet Type	Electric Magnet
Nominal Voltage	12 VDC
Perm. Deviation	-20% / +10%
Switching Current Approx.	190 mA
Current Drop	Max. to 40 mA

### Technical Data

Nominal Pressure	350 bar
Medium	HFA / Quaker Minetech Protection Fluid
Material	CUZn39PB3
Nominal Widths	NG 0.5
Weight	2.73 kg

### Apply in

Europe  
USA  
Australia

### Approval No.

INERIS 05 ATEX 0049  
18-ISA050002-0  
ANZEx 05.4015x

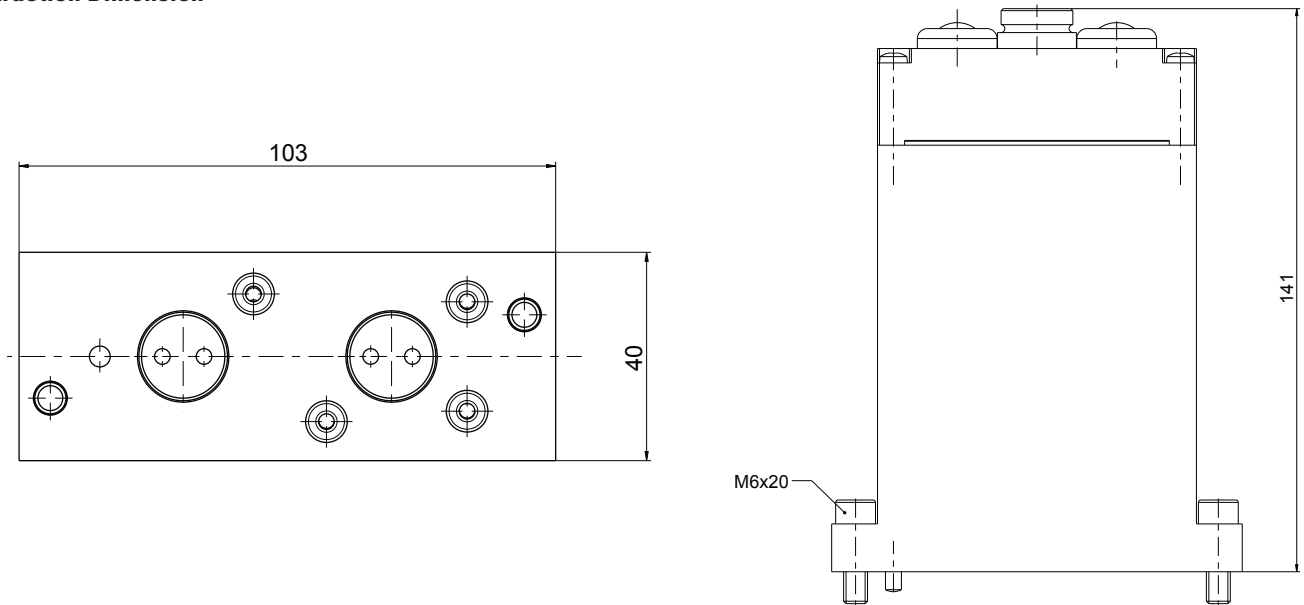
Reman P/N: 20R3403  
SAP P/N: 344857



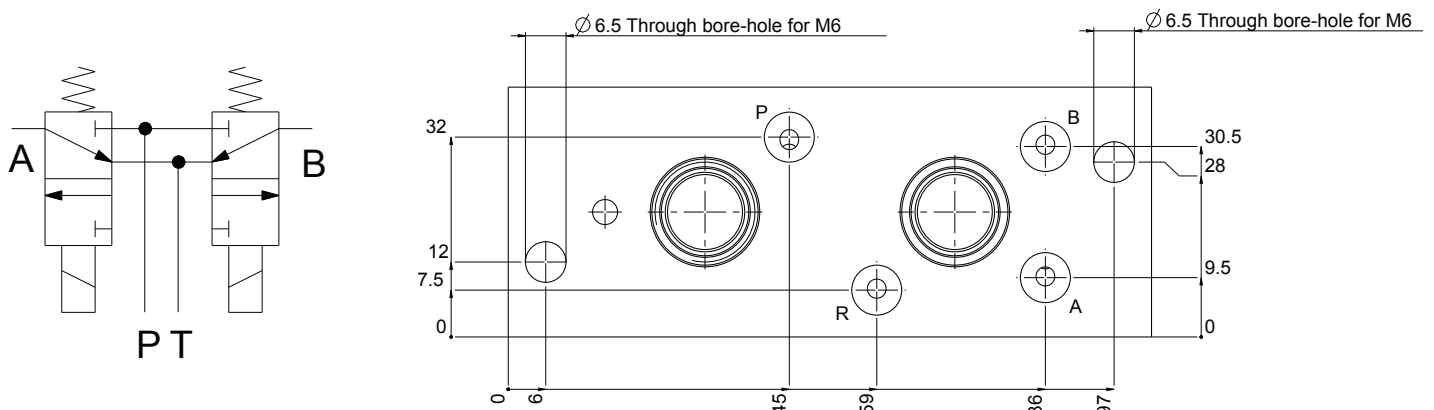
# Cat<sup>®</sup>

## DOUBLE 3/2-WAY SOLENOID VALVE

### Construction Dimension



### Connection Diagram



All dimensions in millimeters (mm).

For more complete information on Cat products, dealer services, and industry solutions, visit us on the web at [mining.cat.com](http://mining.cat.com) and [www.cat.com](http://www.cat.com)

© 2015 Caterpillar Inc. • All Rights Reserved  
 CAT, CATERPILLAR, their respective logos, "Caterpillar Yellow" and the "Power Edge" trade dress, as well as corporate and product identity used herein, are trademarks of Caterpillar and may not be used without permission.

AEHJ0171

