



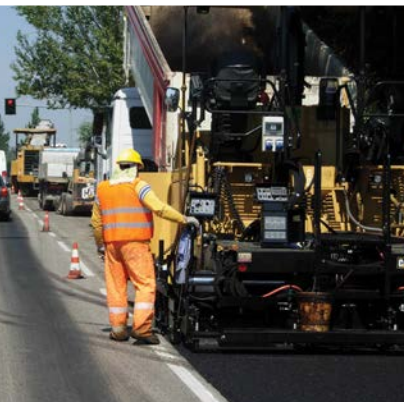
CAT[®] F-SERIES PAVERS AND SCREEDS

BUILT FOR IT.[™]



CONTENTS

Cat Features	4, 5
Paver Features and Specifications	
Integrated Generator	6, 7
Fuel Efficient Engines	8, 9
Material Delivery	10, 11
Operating Environment	12, 13
Operating Console	14, 15
Wheel Undercarriage	16, 17
Mobil-Trac™ Undercarriage	18, 19
Specifications	20, 21
SE60-Series Screeds	22, 23
Tamper-Bar System	24, 25
Screed Controls	26, 27
Screed Specifications	28
Paver and Screed Compatibility	29
Wide Width Paving Packages	30, 31
Cat® Grade Control	32, 33
Sustainability	34
Product Link™	35
Customer Support	36
Mobile Apps	37
Training and Solutions	38
Service and Support	39



^ **AP555E/AS4252C**
Urban Street



^ **AP300D/AS4173**
Rural Road



^ **AP655D/AS4251C**
RCC Mix



^ **AP500E/AS4252C**
Residential Street

PAVING ROADS

ALL DAY. EVERY DAY.

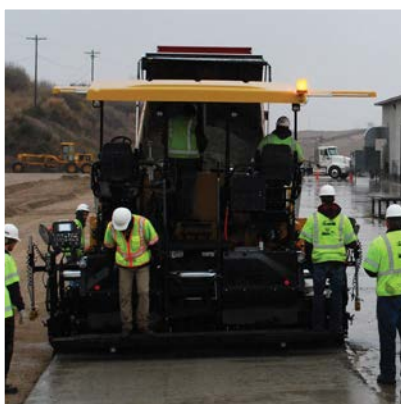
At Caterpillar Paving Products, all we think about is paving. Worldwide, no other manufacturer has more people dedicated to helping paving customers increase productivity, quality and profitability than Caterpillar.

Our line of Cat pavers and screeds reflect that dedication, providing customers with durable, reliable and versatile machines that lower risk and increase mat quality.

We invite you to compare our pavers side-by-side with competitive machines—the quality and value of our machines will stand out. Visit your local Cat dealer today and see what makes Caterpillar the first choice of paving customers around the globe.



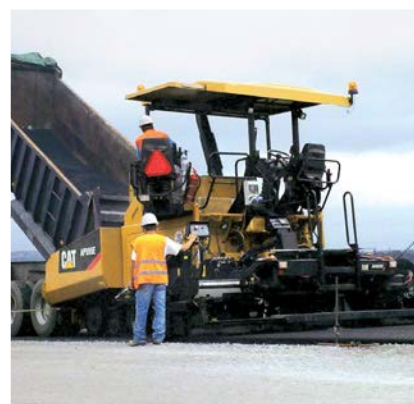
^ **AP600D/AS4251C**
Motorway



^ **AP1055F/SE60 VT XW**
RCC Mix



^ **AP1000F/SE60 V**
Highway



^ **AP555E/AS4252C**
Rural Road

SIMPLY ADVANCED

TECHNOLOGY BOOSTS PERFORMANCE

HIGH RETURN ON INVESTMENT

- Higher resale value: long-life components, and latest engine emission technology
- Exclusive 70 kW integrated generator, designed for long life by the same team that developed the D7E electric drive track-type tractor
- Fast heating screed leads to more daily production, heating time in as little as 15 minutes from 5° C to 130° C (41° F to 266° F)
- Wheel and Mobil-trac™ undercarriage designs limit tow-point movement for excellent paving results
- Exclusive air flow improves operating conditions for the crew and keeps components cooler for lasting durability

QUALITY RESULTS, IMPROVED EARNINGS

- SE60 XW screeds deliver excellent ride, density, and mat texture while providing superior adjustment capabilities up to 10 m (33')
- SE60 V screed delivers great ride and mat qualities while providing versatility in urban areas as well as interstate applications
- Tow-point utilizes exclusive linkage design for optimal screed flotation
- 2-speed proportional control on the screed extenders provides versatile control

ADVANCED TECHNOLOGY

- Exclusive screed heating system monitors elements for failure conditions, eliminates unnecessary replacement
- Cat Grade and Slope option integrated into the tractor and screed displays for optimized operator efficiency
- Propel and feeder system settings transfer between stations with a single switch; Cat exclusive
- Auto-fill feeder system simplifies setup
- Single touch feeder system activation optimizes efficiency
- Automated travel feature; augers and hydraulic mainframe extensions raise with the screed, preventing damage during transport
- Product Link remotely monitors machine location, daily hours of operation, fuel consumption, fault codes, and preventative maintenance status, for optimal machine support

Performance improvements and technology with a customer-friendly interface are key benefits of the new F-Series Asphalt Pavers.



"We have hit our target specs on all the jobs it's worked on. It's the paver we use to reach smoothness!"

– Cat Paving Contractor

LOWER OWNING AND OPERATING COSTS

- Exclusive Eco-mode and Automatic Engine Speed Control reduce fuel consumption and lower sound levels for better comfort and communication
- 4-pump feeder system is designed for high production in Eco-mode, leads to lower fuel consumption
- Million cycle keypad switches
- Conveyor bed plates and chain guards designed to minimize labor requirements and provide lower cost replacement
- Heating elements slide-out for easy replacement
- Machined screed frames simplify screed plate leveling

UNMATCHED AFTER-THE-SALE SUPPORT

- Strategically located dealers with 24/7 support
- In-the-Iron service training for technicians
- Paver Operator Training helps maximize machine performance
- Project consulting helps improve technique and job site management



QUICK STARTER

INTEGRATED GENERATOR SAVES TIME AND FUEL

FASTER HEAT, LOWER FUEL CONSUMPTION

Exclusive 70 kW Integrated Generator

- Developed by the same team that designed D7E electric drive, track-type tractor
- Designed to last for the life of the paver, oil-cooled, direct drive delivers reliable performance
- Fast heating leads to less waiting, reduced fuel consumption, and more daily production
- Even heat distribution throughout the screed plates

EXCLUSIVE SYSTEM MONITORING

- Exclusive system monitors heating elements for failure conditions, eliminates unnecessary replacement
- Temperature zone monitoring allows heating to continue in the event of a temperature sensor failure
- Warning/failure indicators delivered through the LCD displays
- Heating system can be monitored through Product Link

QUIET OR QUICK HEATING OPTIONS

Quiet Heat

- Low sound levels
- 1300 rpm engine speed
- 15 minute heating time to 130° C (266° F) from 5° C (41° F) ambient temperatures at standard paving widths
- 35 minute heating time to 130° C (266° F) from 5° C (41° F) ambient temperatures when equipped with wide width extensions packages

Quick Heat

- Wide-width packages only
- Utilized with wide-width paving packages
- Note: At standard widths quick heat will not heat any faster than quiet heat*
- Variable engine speed, adjusts to the minimum required rpm
- 25 minute heating time to 130° C (266° F) from 5° C (41° F) ambient temperatures when equipped with wide width extensions packages

“The screed heats more quickly at the start of the shift and the even heat throughout the screed is essential to preventing segregation.”

– Cat Paving Contractor



High-powered generator easily powers nighttime lighting configurations.

JOB SITE POWER

- Easily power ballasted lighting configurations
- Full power at 1000 rpm
- 6.6 kW of available power
- @120 volts/60 Hz**
 - Eight, 120 volt GFCI outlets w/breaker resets
- @240 volts/50 Hz**
 - Two, 240 volt GFI/RCD breakers
- @120 volts/50 Hz**
 - Four, 120 volt GFCI/RCD breakers

**Configurations vary by region, contact your dealer for more information.*



Quiet or quick heating made easy through the LCD display. Quick heating offers time-savings when utilizing wide-width packages.



Three preset heating options provide a wide range of temperatures for various mix designs.

FUEL EFFICIENT AND QUIET

TECHNOLOGY, INCLUDING ECO-MODE
OPTIMIZE POWER





CAT C7.1 ACERT™ ENGINE

Two models of the C7.1 engine are available to meet regional emission standards.

Australia, U.S., and Canada

- Engine meets U.S. EPA Tier 4 Final and EU Stage IV emission standards
- Power at 2200 rpm is 168 kW, 228 metric hp, or 225 Imperial hp
- Self-Activating Regeneration
 - Automatic, operator interaction NOT required
 - Easy-fill DEF tank, assists with regeneration
 - 19.1 L (5 gal) capacity
 - Refill when fueling
- Ultra Low Sulfur Diesel (ULSD) fuel is required
(Bio-diesel up to B20 can be utilized when blended with ULSD, refer to the Cat Fluids Guide for more information)
- Engine oil must meet Caterpillar ECF-3, API CJ-4/ACEA E9 specifications
 - Reduced sulfated ash, phosphorus, and sulfur

China, Middle-East, Russia, South America

- Engine meets emissions equivalent to U.S. EPA Tier 3 and EU Stage IIIA standards
- Power at 2200 rpm is 186 kW, 252 metric hp, or 249 Imperial hp

POWER MANAGEMENT

Propel and feeder systems compensate for lower engine rpm in order to continue with consistent material flow to the screed.

- Enabled when trucks have over-applied brakes or when working on steep inclines at wide widths

REDUCED FUEL CONSUMPTION AND LOWER SOUND LEVELS

Don't waste fuel or power, Eco-mode and Automatic Engine Speed Control combine to optimize engine speed and deliver the power when needed. F-Series pavers improve fuel efficiency by 5% over the E-Series pavers and up to 20% over some other manufacturers.

Eco-mode

- Eco-mode, utilizes an engine speed of 1650 rpm for reduced fuel consumption and lower sound levels
- Well suited for most applications

Automatic Engine Speed Control

- Engine operates at 2200 rpm when the propel lever moves from neutral
- When activated, engine speed is reduced to idle speed of 1000 rpm when the propel lever is moved to neutral or to 1300 rpm when screed heat is active

Advanced Eco-mode

- Combines Eco-mode and Automatic Engine Speed Control
 - Engine speed increases to 1650 rpm when the propel lever moves from neutral
- Modifies engine speed based on load
 - If the upper power threshold is exceeded, the engine speed will increase to 2200 rpm and remain there until the load drops below the minimum threshold and remains there for 30 seconds

MORE COMFORT FOR YOUR CREW

FIGHT FATIGUE, IMPROVE PERFORMANCE

BETTER VISIBILITY

- Dual independent stations can extend beyond the frame for good all-around visibility, also offer backup capability
- Low profile front-mounted cooling system improves forward visibility
- The auger assembly has been redesigned to improve visibility into the auger chamber
- 12-volt power receptacle, supports communication devices
- Upper and lower tow-point indicators simplify height adjustment for tractor and screed operators

EXCEPTIONAL COMFORT

- Heated seat option, multiple seat adjustments, and tilting consoles provide day-long comfort
- Quiet operation supports clear communication
- Cup holders offer convenience
- Intuitive touch screen color display keeps the operator informed and in control
- USB port simplifies software updates



Machine settings automatically transfer between stations, simply push and hold the button to resume paving.





The ventilation system draws fumes from the conveyor tunnel as well as the auger chamber and redirects them away from the operator for a more comfortable working environment.

COOLER AND QUIETER

AIRFLOW DIRECTS FUMES AND SOUND AWAY FROM THE CREW

BETTER OPERATING CONDITIONS

- Operator-friendly environment
- Top-mounted cooling system directs fumes, hot air, and fan noise away from crew
- Cooling system redirects fumes surge that occurs when mix is dumped into the hopper
- Ventilation system removes and redirects vapors from the conveyor tunnels and auger chamber



EASY ADJUSTMENT

TECHNOLOGY HELPS OPERATORS PERFORM



TOP FEATURES

1. Automated Hopper Functions
2. New Mix Delivery Technology
3. Million Cycle Switches
4. Water Resistant Console and LCD Display
5. Integrated Cat Grade Control
6. Generator Activation
7. Day or Night Brightness Control
8. Eco-Mode and Automatic Engine Speed Control
9. Automatic Station/Settings Transfer

EASY RECOGNITION

- Multiple language options
- Intuitive symbols and large graphics simplify operation
- Adjustable brightness control for easy viewing day or night
- Raised switch design enables easy recognition for better efficiency and performance

INTERACTIVE LCD DISPLAY

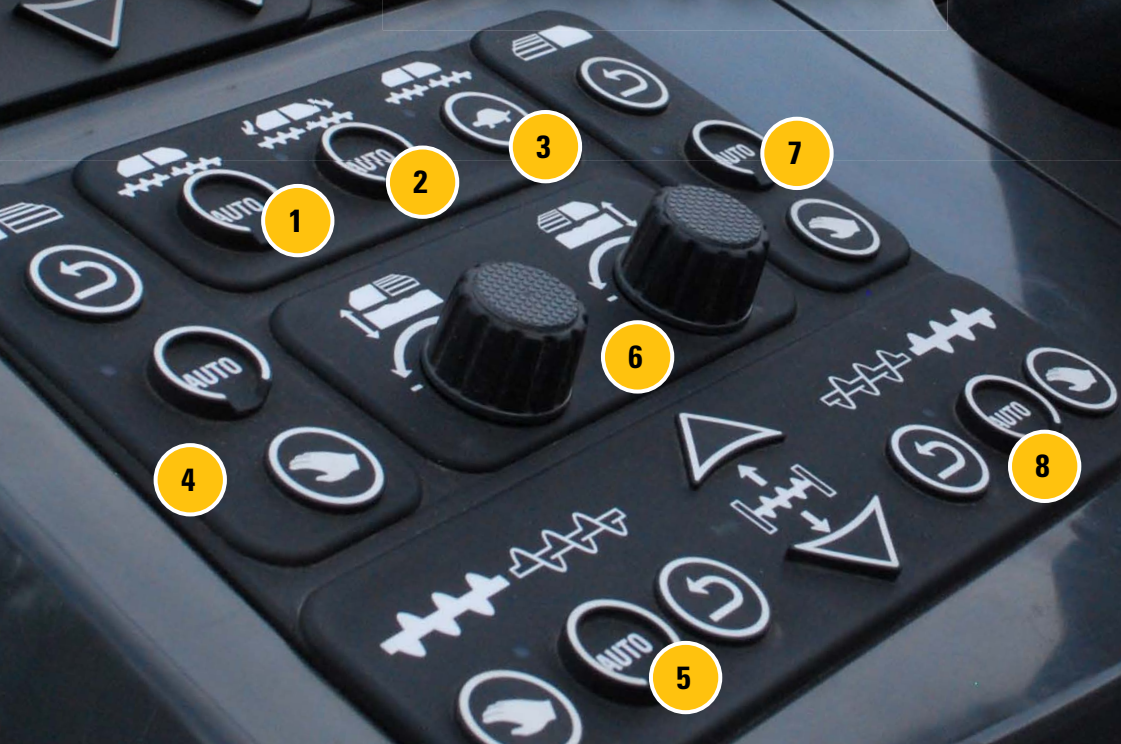
- Touch-screen access to:
 - Generator activation, auxiliary power
 - Screed temperature control
 - Tamper and vibratory speeds
 - Mix height adjustment, *previously only available from the screed console*
 - Service code information
 - Screed heating zones
 - Integrated Cat Grade Control
 - Stored operator preferences

EXCEPTIONAL DURABILITY

- Water resistant for excellent reliability, meets IP67 common water submergence ratings
- Durable million cycles switches
- Grouped component replacement, no need to replace the entire console
- Durable switch cover withstands extreme conditions



MATERIAL DELIVERY



MIX DELIVERY

1. Single-Touch Feeder System
2. Auto-Fill System
3. Warm-up, Clean-out Mode
4. Left Side Conveyor Controls
5. Left Side Auger Controls
6. Conveyor Ratio Control Dials
7. Right Side Conveyor Controls
8. Right Side Auger Controls

HIGH PRODUCTION FEATURES

- 1602 tonnes/hr (1,766 tph) throughput capacity
- 4-pump feeder system is designed with oversized components for high production in Eco-mode
- Wide tunnel and optimally spaced conveyor bars ensure smooth flow to the auger chamber
- Push-roller includes four horizontal and two vertical positions that conform to various trucking fleets for smoother exchanges
- Thick floor plates and robust hopper design easily handle hopper inserts

The paver takes off nicely with no noticeable joints, yields a quality ride!

– Cat Paving Contractor

EASY OPERATION

Auto-Fill Feeder System

- Simplifies starts by alternating the conveyors and augers until the mix height reaches the sensor set point

Single-Touch Feeder System

- Automatically activates the entire feeder system with a single button for better efficiency

One-Touch Hopper Control

- The hopper wings and front hydraulic apron (if equipped) can be folded with a single touch and release
- The system can be tailored to activate left or right wings together or independently, with front hydraulic apron, or all three together

Cleanout/Warmup Mode

- Activates the augers, conveyors, and tamper bar (if equipped) in slow speed, enables the application of release agents to prevent material build-up

Mix Height Adjustment

- Mix height adjustment from the tractor LCD display offers more control, previously only available from the screed

IMPROVED DESIGNS

New Components

- Thicker conveyor chain guards, heavy-duty chains, and stout conveyor bars deliver lasting performance and lower lifetime operating costs
- The auger assembly has been angled toward the tractor for better visibility and material flow
- Standard entry hopper design provides a height of 570 mm (22.5") and width of 3224 mm (10' 7")
 - Easily accepts hopper inserts
 - Provides a capacity of 7.6 m³ (267 ft³)
- Low entry hopper design provides a height of 529 mm (21") and entry width of 3490 mm (11' 6")
 - Maintains a flat profile for 610 mm (24"), improving the truck interface
 - Low entry design is 266 mm (10.5") wider than the standard entry hopper
 - Provides a capacity of 8.1 m³ (286 ft³)

Hydraulic Mainframe Extensions

- The optional 457 mm (18") hydraulic mainframe extensions attach to the auger assembly and provide smooth material flow out to the extenders

Automated Travel Mode

- The augers and hydraulic mainframe extensions can be tailored to raise when lifting the screed, this unique feature prevents damage to the augers from curbs and man-hole covers when moving around the job site

Easier Service

- Hardware-free bed plates simplifies replacement
- Bottom-side mounting hardware for the chain guards eliminates bolt wear and material build-up for easier replacement

FEED SENSOR OPTIONS

Zero Sensor Paving (manual)

- Set the feeder system to automatic and adjust the mix height setting, no need to hold the manual switch and run full on/off as previous models required

Two Sensor Feeder System

- Utilizes ratio control to automatically adjust mix flow, mechanical or sonic sensors available

Four Sensor Feeder System

- Utilizes 2 sensors to control the conveyors and 2 sensors to control the augers, mechanical or sonic sensors available

Low Entry Hopper



Standard Entry Hopper



Hydraulic Mainframe Extension

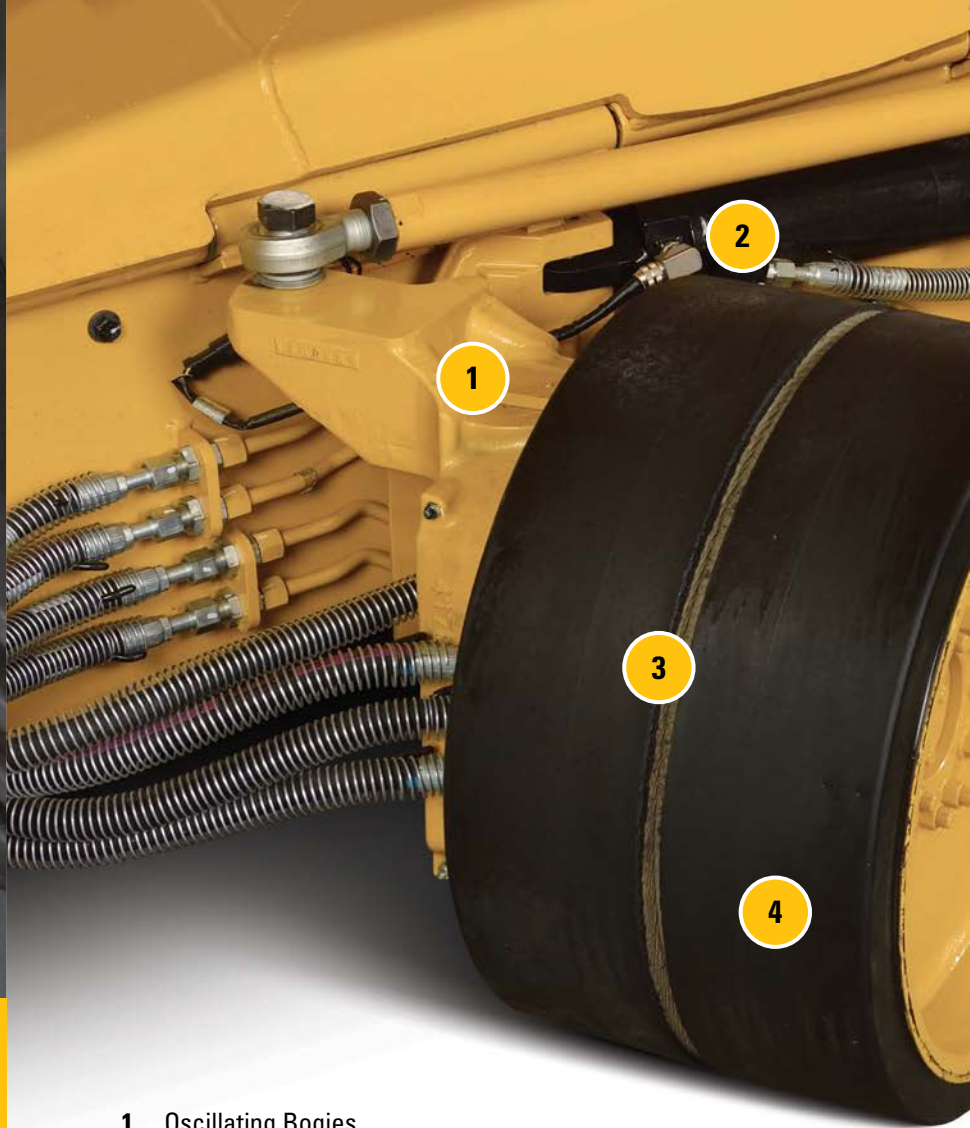


Feed Sensor Options

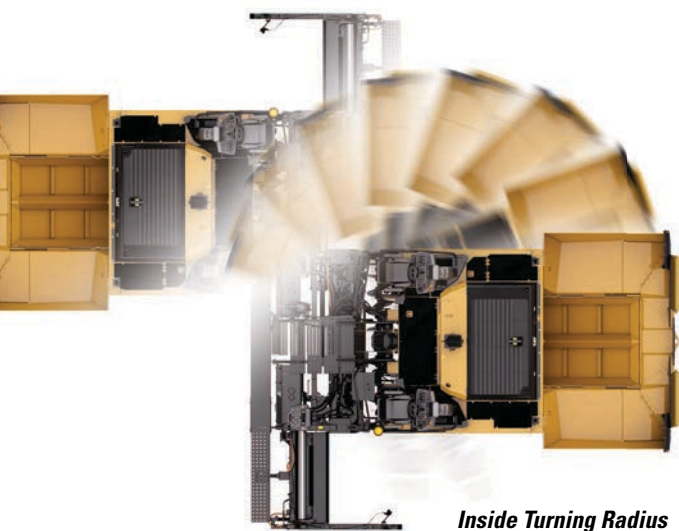




Adjustable front wheel assist and all-wheel drive torque prevent slippage for better traction and mat quality.



1. Oscillating Bogies
2. Steering Position Sensor
3. Dual Solid Front Steering Wheels
4. Front Wheel Assist
5. All-Wheel Drive
6. Large Drive Tires



Inside Turning Radius
AP1000F 0.5 m (1.5')

Quick reacting speed control ensures that responsive power is immediately available, while the wheeled undercarriage provides mobility and high speed capability when moving around the job site.



RESPONSIVE POWER

OPTIONS ADD PULL

EXCELLENT MANEUVERABILITY

- Tight turning radius for quick mobility
- The oscillating design easily overcomes obstacles, eliminates jarring effects and minimizes tow-point movement
- New radial tire design improves traction by up to 20% over previous series tires

Power Turning System

- A position sensor located in the left steering cylinder helps maintain consistent travel speeds when making turns by adjusting the drive speed of the propel motors according to the steering angle of the front wheels, leading to better mat quality and less wear on the drive system
- Provides power and traction to push trucks through turns

MOBILITY

- Pave, Travel and Maneuver modes
 - Pave: Improved steering control when paving
 - Travel: Maximum speeds
 - Maneuver: Optimizes steering control and delivers a tight inside turning radius of .5 m (1.5')

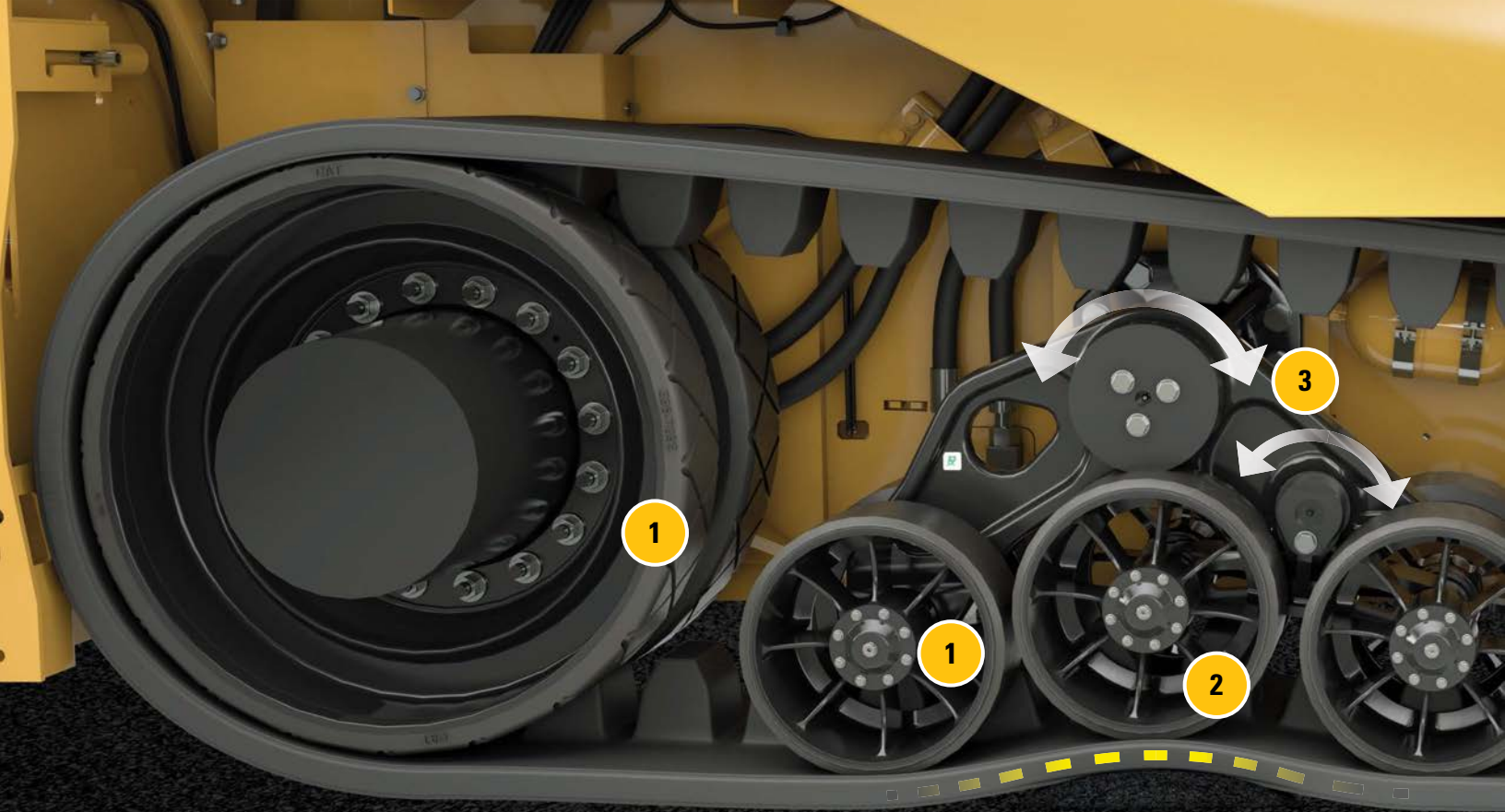
FRONT WHEEL ASSIST OR ALL-WHEEL DRIVE

Four Wheel Drive (Option)

- Provides power to the front two bogie wheels for added traction when pushing trucks or working on soft base
- Dedicated pump delivers a 50% increase in front wheel torque over previous models for better traction

All-Wheel Drive (Option)

- Provides power to the front and rear bogie wheels, maximizing traction
- 200% increase in pull force over previous models



EXCELLENT TRACTION HIGH SPEEDS

MOBIL-TRAC DELIVERS RIDE SIMILAR
TO WHEELED PAVERS

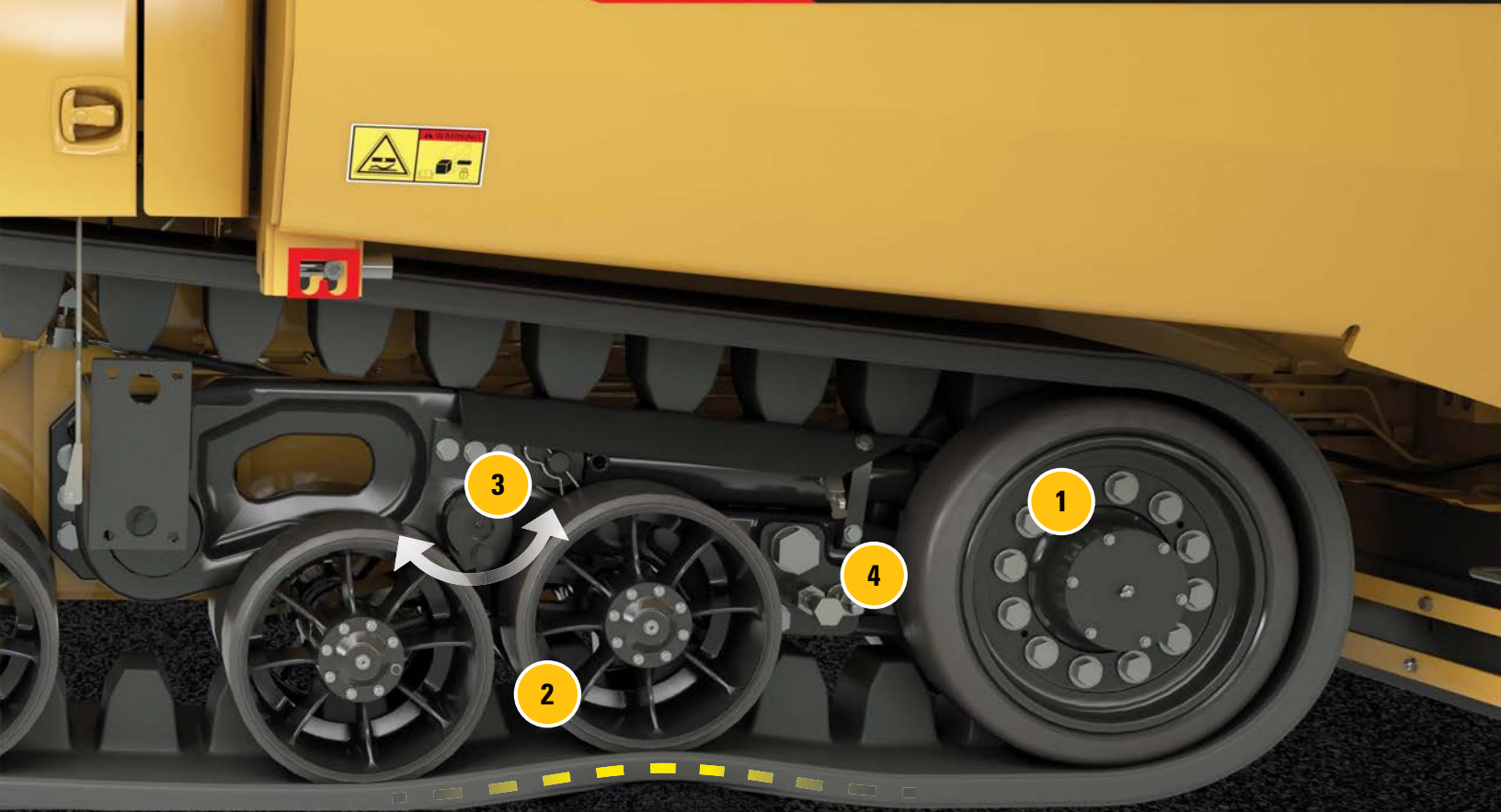
Maintenance-free and unmatched traction in both a smooth or tread-bar style belt; the Mobil-Trac™ undercarriage provides excellent flotation, smooth travel, and high speed capability.

MOBILITY

- High speed capability; similar to wheeled pavers
- Pave, Travel and Maneuver modes
 - Pave: Improved steering control when paving
 - Travel: Maximum speeds
 - Maneuver: Optimizes steering control and enables the paver to rotate within its own footprint

DURABILITY

- Self-tensioning accumulators, center guide blocks and rugged internal belt cables ensure durability
- Rubber-coated components designed to shed asphalt and prevent accumulation



1. Rubber-Coated Components
2. Oscillating Bogies
3. Pivot Point
4. Automatic Belt Tensioning
5. Smooth Belt
6. Tread-bar Belt

SMOOTH RIDE

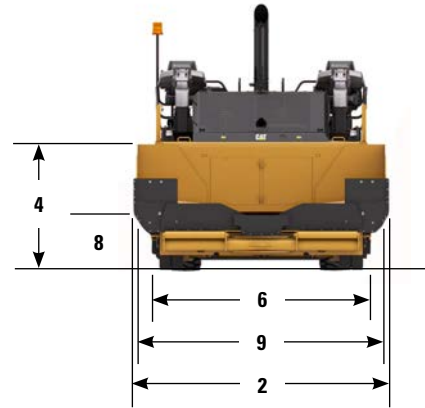
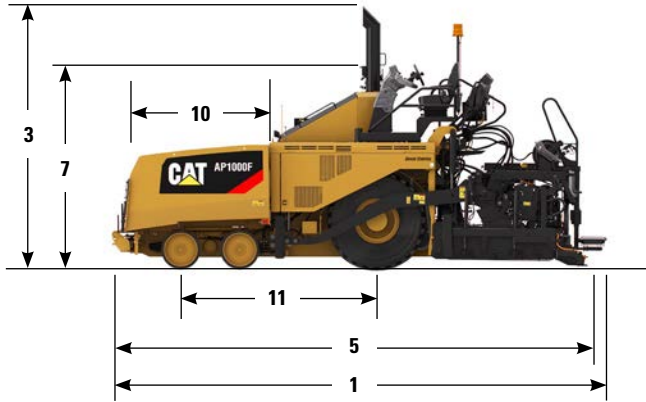
- Oscillating bogie design delivers ride similar to wheeled paver
- Pivoting design eliminates jarring effects caused by milled cuts
- Guide lugs keep the tracks centered for reliable performance

PERFORMANCE

- Mobil-Trac undercarriage design minimizes tow-point movement
- Front and rear bogie sets crawl over obstacles; maintains ground contact and minimizes tow-point movement
- Smooth belt performs well on soft base materials and fresh mats
- Tread-bar belt excels on loose paving/transport conditions
- Outstanding traction in any condition
- Excellent flotation and low ground pressures due to the large track area



AP1000F SPECIFICATIONS



Dimensions

1	Operating length w/SE60 V screed	6860 mm	22' 6"
	Operating length w/SE60 V XW, VT XW screed	7050 mm	23' 2"
	Length without screed and canopy	5563 mm	18' 3"
2	Operating width - standard entry hopper	3350 mm	11' 0"
	Operating width - low entry hopper	3604 mm	11' 10"
3	Operating height with canopy, (top of beacon)	4000 mm	13' 1"
	Operating height without canopy	3715 mm	12' 2"
4	Operating deck height	1791 mm	5' 11"
5	Transport length with SE60 V	6720 mm	22' 1"
	Transport length with SE60 V XW, VT XW	6910 mm	22' 8"
6	Transport width with endgates	3211 mm	10' 6"
	Transport width - endgates folded	3000 mm	9' 10"
7	Transport height - canopy retracted	3100 mm	10' 2"
	Transport height - without canopy	3000 mm	9' 10"
8	Truck entry height with standard entry hopper		
	Manual apron	572 mm	22.5"
	Hydraulic apron	616 mm	24"
9	Truck entry height with low entry hopper		
	Manual apron	529 mm	21"
	Hydraulic apron	587 mm	23"
9	Truck entry width - standard entry hopper	3224 mm	10' 7"
	Truck entry width - low entry hopper	3490 mm	11' 6"
10	Hopper length, with pushroller - minimum	2414 mm	7' 11"
11	Wheel base	2776 mm	9' 1"

Powertrain

Cat C7.1 ACERT Engine			
Australia, U.S., and Canada*	168 kW	225 hp	
* Engine meets U.S. EPA Tier 4 Final/E.U. Stage IV emission standards.			
Number of cylinders	6		
Engine speed - maximum/minimum	2200/1100 rpm		
Eco-mode	1650 rpm		
Screed heating - standard width (Quiet)	1300 rpm		
Screed heating - w/extensions (Quick)	1300 to 2200 rpm		

Weights - Australia, U.S., and Canada

AP1000F (tractor only - shipping)	15 526 kg	34,228 lb
AP1000F (tractor only - operating)	15 794 kg	34,820 lb
AP1000F with SE60 V screed	19 044 kg	41,985 lb
AP1000F with SE60 V XW screed	19 719 kg	43,472 lb
AP1000F with SE60 VT XW screed	20 602 kg	45,419 lb

Operating weights include full fuel tank and 75 kg (165 lb) operator.

Screed Specifications

Standard paving range	3.0 - 6.0 m	9' 10" - 19' 6"
Max. paving width w/extensions	7.65 m	25'
Maximum paving depth	305 mm	12"
Crown range - SE60 V, V XW*	-3% to +10%	
	SE60 VT XW**	
	-1.5% to +5%	
Extender height range	-20 mm to +50 mm	
Extender slope range - SE60 V, V XW	-3% to +10%	
	SE60 VT XW	
	-3% to +5%	

* Scale indicator represents total crown for the screed.

** Scale indicator represents crown for each side of the screed.

Note: Total crown capability is the same for both vibratory only screeds and tamper bar screeds.

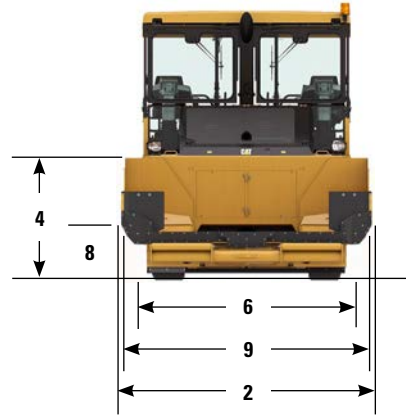
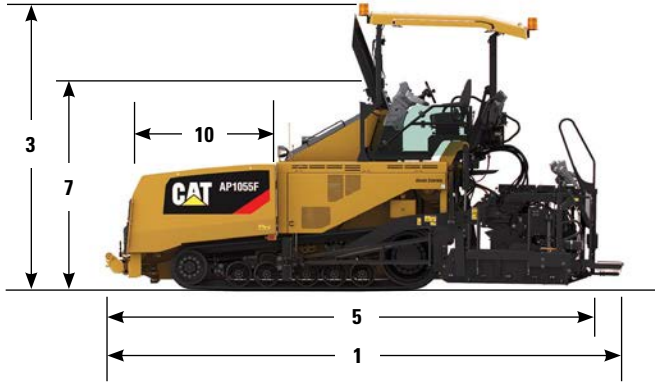
Capacities

Maximum throughput capacity	1602 tonnes/h	1,766 tph	
Hopper capacity with tunnels			
	Standard entry hopper	7.6 m ³	267 ft ³
	Low entry hopper	8.1 m ³	286 ft ³
Fuel tank	348 L	92 gal	
DEF (Urea)	19.1 L	5 gal	
Cooling system	45.4 L	12 gal	
Engine oil	16 L	4.2 gal	
Hydraulic tank	219 L	58 gal	

Speed Ranges

Paving w/vibratory screed	76 mpm	250 fpm
Paving w/tamper-bar screed	25 mpm	82 fpm
Travel	19.9 km/hr	12 mph

AP1055F SPECIFICATIONS



Dimensions

1	Operating length w/SE60 V screed	6840 mm	22' 5"
	Operating length w/SE60 V XW, VT XW screed	7034 mm	23' 1"
	Operating length without screed	5609 mm	18' 5"
2	Operating width - standard entry hopper	3336 mm	10' 11"
	Operating width - low entry hopper	3604 mm	11' 10"
3	Operating height with canopy, (top of beacon)	3996 mm	13' 1"
	Operating height without canopy	3715 mm	12' 2"
4	Operating deck height	1791 mm	5' 11"
5	Transport length - endgates/walkway folded	6874 mm	22' 7"
6	Transport width - with endgates	3211 mm	10' 6"
	Transport width - endgates folded	3000 mm	9' 10"
7	Transport height - canopy retracted	3056 mm	10'
	Transport height - without canopy	2929 mm	10' 5"
8	Truck entry height with standard entry hopper		
	Manual apron	570 mm	22.5"
	Hydraulic apron	616 mm	24"
9	Truck entry height with low entry hopper		
	Manual apron	521 mm	20.5"
	Hydraulic apron	587 mm	23"
9	Truck entry width - standard entry hopper	3224 mm	10' 7"
	Truck entry width - low entry hopper	3490 mm	11' 6"
10	Hopper length with pushroller - minimum	2414 mm	7' 11"

Powertrain

Cat C7.1 ACERT Engine			
Australia, U.S., and Canada*		168 kW	225 hp
* Engine meets U.S. EPA Tier 4 Final/E.U. Stage IV emission standards.			
Cat C7.1 Engine			
China, Middle-East, Russia, South America**		186 kW	249 hp
** Engine meets emissions equivalent to U.S. EPA Tier 3 and E.U. Stage IIIA requirements.			
Number of cylinders	6		
Engine speed - maximum/minimum	2200/1100 rpm		
Eco-mode	1650 rpm		
Screed heating - standard width (Quiet)	1300 rpm		
Screed heating - w/extensions (Quick)	1300 to 2200 rpm		

Speed Ranges

Paving w/vibratory screed	64 mpm	210 fpm
Paving w/tamper-bar screed	25 mpm	82 fpm
Travel	14.5 km/hr	9 mph

Weights - Australia, U.S., and Canada

AP1055F (tractor only - shipping)	16 620 kg	36,642 lb
AP1055F (tractor only - operating)	16 963 kg	37,398 lb
AP1055F with SE60 V screed	20 452 kg	45,090 lb
AP1055F with SE60 V XW screed	21 128 kg	46,580 lb
AP1055F with SE60 VT XW screed	21 918 kg	48,320 lb

Operating weights include full fuel tank and 75 kg (165 lb) operator.

Weights - China, Middle-East, Russia, South America

AP1055F (tractor only - shipping)	16 716 kg	36,852 lb
AP1055F (tractor only - operating)	17 355 kg	38,261 lb
AP1055F with SE60 V screed	20 618 kg	45,455 lb
AP1055F with SE60 V XW screed	21 056 kg	46,428 lb
AP1055F with SE60 VT XW screed	21 815 kg	48,102 lb

Operating weights include full fuel tank and 75 kg (165 lb) operator.

Screed Specifications

Standard paving range	3.0 - 6.0 m	9' 10" - 19' 6"
SE60 V max. paving width w/extensions	7.65 m	25'
SE60 V XW max. paving width w/extensions	10 m	33'
Maximum paving depth	305 mm	12"
Crown range - SE60 V, V XW	-3% to +10%	
SE60 VT XW	-1.5% to +5%	
Extender height range	-20 mm to + 50 mm	
Extender slope range - SE60 V, V XW	-3% to +10%	
SE60 VT XW	-3% to +5%	

* Scale indicates total crown for the screed.

** Scale indicates crown for each side of the screed.

Note: Total crown capability is the same for both vibratory only screeds and tamper bar screeds.

Capacities

Maximum throughput capacity	1602 tonnes/h	1,766 tph
Hopper capacity with tunnels		
Standard entry hopper	7.6 m ³	267 ft ³
Low entry hopper	8.1 m ³	286 ft ³
Fuel tank	348 L	92 gal
DEF (Urea)	19.1 L	5 gal
Cooling system	45.4 L	12 gal
Engine oil	16 L	4.2 gal
Hydraulic tank	219 L	58 gal

SE60-SERIES SCREEDS

SCREED HEAT TECHNOLOGY

- Exclusive zone monitoring allows heating to continue in the event of a temperature sensor failure
- Exclusive screed heating system monitors elements for failure conditions, eliminates unnecessary replacement
- Warning/failure indicators delivered through the LCD displays
- Heated end gate option improves material flow and mat texture

INCREASED DURABILITY, LOWER COSTS

- Million cycle keypad switches ensure reliability
- Exclusive screed plate material provides long-term durability
- Oil-bath vibratory pods deliver exceptional longevity
- Larger extender support tube assembly increases rigidity for better mat quality

EASY ADJUSTMENTS

- Feeder system ratio adjustment capability from the screed, *previously adjusted from the tractor only*
- Standard hydraulic adjustment for extender height, slope and crown, allows for on-the-go adjustments at standard and maximum paving widths
- Exclusive angle of attack adjustments on the extender
- Trailing edge screed plate adjusters help maintain even wear across the entire length for optimal life
- Center pivot pin, allows for on-the-go two-bolt adjustment to the extender for improved texture control
- Exclusive tow-point design optimizes screed flotation

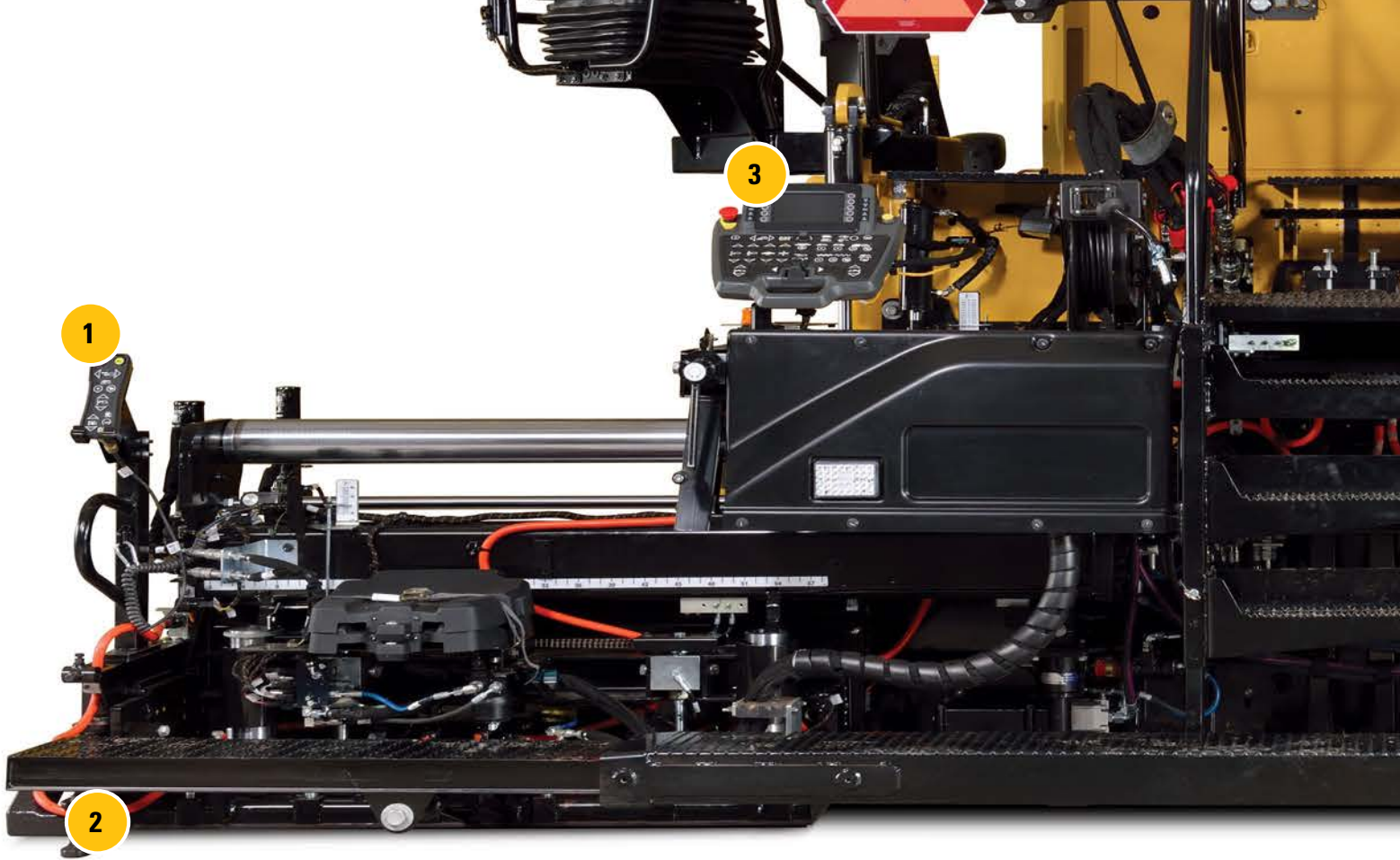
BETTER EFFICIENCY

- Heating elements slide-out for easy replacement
- Machined screed frames simplify screed plate replacement and leveling
- Innovative hooking system utilizes extender slope to attach wide-width paving packages; eliminates other lifting device needs

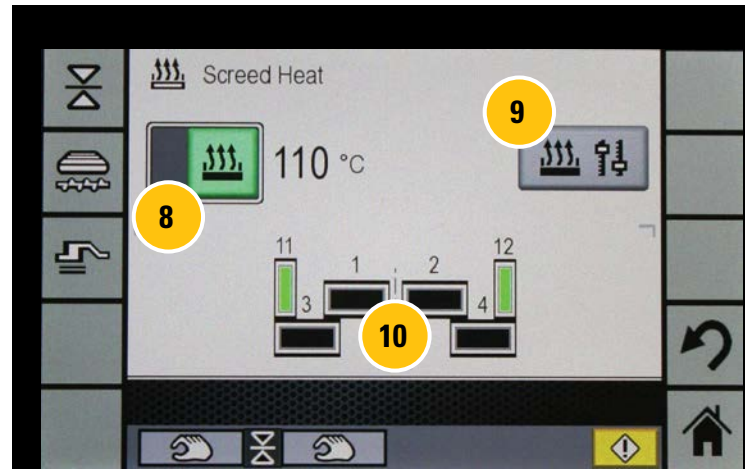
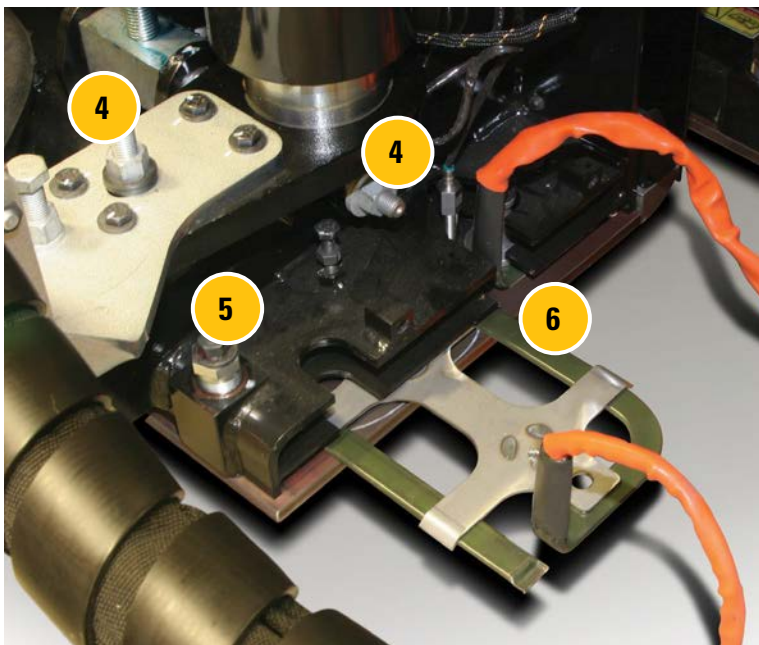


We were on our way to reaching density targets even before the roller went to work!

– Cat Paving Contractor



- 1. Remote Pendant
- 2. Folding End Gate (Option)
- 3. Integrated Cat Grade Control
- 4. On-the-Go Angle of Attack Adjuster
- 5. Trailing Edge Screed Plate Adjusters
- 6. Quick-Change Heating Elements
- 7. Free-Floating Tow-Point
- 8. Generator Activation
- 9. Temperature Selection
- 10. Temperature Zone Monitoring

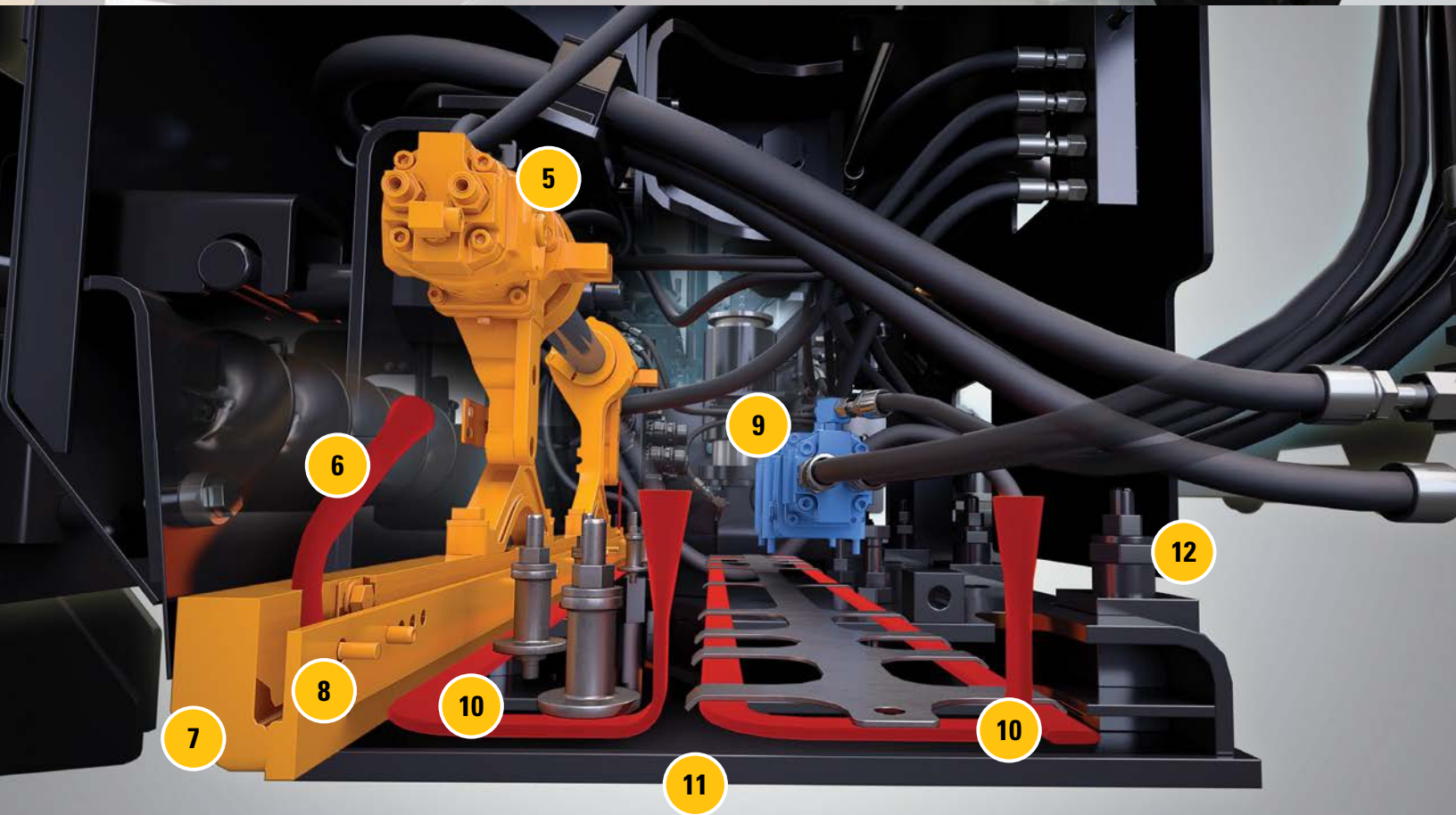




TAMPER BARS AND VIBRATORY SCREED PLATES

MAXIMIZE DENSITY BEHIND THE SCREED

- | | |
|-------------------------------|---|
| 1. Spring-Loaded End Gates | 7. Tamper Bar |
| 2. Heated End Gate (optional) | 8. Replaceable Wear Plate (Bolt-on) |
| 3. Screed Controls | 9. Vibratory Drive (Oil-Bath) |
| 4. Standard Power Crown | 10. Quick-Change Heating Element |
| 5. Tamper Bar Eccentric Drive | 11. Single Main Screed Plate |
| 6. Tamper Bar Heating Element | 12. Threaded-Bolt Screed Plate Adjuster |





TOP FEATURES

1. Cat Grade Control Indicators
2. Soft-Key Adjustments
3. Conveyor Ratio Control Adjustment (Touch-screen)
4. Lockout Key
5. 2-Speed Extender Control
6. Proportional Extender Switch

IMPROVED CONTROL BETTER DISPLAYS

SWITCHES, PENDENTS, TOUCHSCREENS
BENEFIT SCREED OPERATORS

The screed extenders offer proportional control and two speed ranges for excellent performance.

SCREED CONSOLES

- Switches are sealed and serviceable; meets IP67 common water submergence rating
- 2-speed, proportional extender control provides efficient performance when changing paving widths
- Configurable lockout feature prevents unintentional adjustment
- Additional material feed controls include pause and reverse for both conveyors and augers; provides greater control when utilizing the four sensor feeder system

LCD DISPLAY

- Multiple language options
- Colorful graphics for easy viewing day or night
- Touch-screen access to preferred settings and adjustments
- Store preferences for multiple operators

Innovative Functions

- Integrated Cat Grade Control
- Ratio control of conveyors now available from the screed consoles, previously only available from the tractor
Note: Mix height adjustment is available from the tractor, previously only available from the screed
- Easy access to service code information
- Activate screed heat, auxiliary power, fumes ventilation, machine washdown, etc.
- Monitor heating zones

REMOTE PENDENT CONTROL

- Extender in/out
- Feeder system pause or manual override
- Tow-point height raise/lower
- Lockout feature prevents unintentional adjustment





AP1055F Paver shown with SE60 V Screed

SE60-SERIES SCREEDS SPECIFICATIONS

Weights

SE60 V	3400 kg	7,496 lb
250 mm Extension	95 kg	209 lb
750 mm Extension	235 kg	518 lb
SE60 V XW	4070 kg	8,973 lb
250 mm Extension	95 kg	209 lb
750 mm Extension	235 kg	518 lb
1250 mm Extension	325 kg	717 lb
SE60 VT XW	4532 kg	9,992 lb
250 mm Extension	95 kg	209 lb
750 mm Extension	295 kg	650 lb
1250 mm Extension	400 kg	882 lb

SE60 V Specifications

Standard paving range	3.0 - 6.0 m	9' 10" - 19' 6"
Maximum paving width w/extensions*		7.5 m 24' 7"
Maximum paving depth		305 mm 12"
Crown range		-1.5% to +10%
Extender height range		-20 mm to +50 mm
Extender slope range		-3% to +5%
Vibratory speed		0 - 3000 rpm

* Includes extensions and end-gate shoes.

SE60 XW-Series Specifications

Standard paving range	3.0 - 6.0 m	9' 10" - 19' 6"
Maximum paving width w/extensions*		10.15 m 33' 4"
Maximum paving depth		305 mm 12"
Crown range		
SE60 V XW		-1.5% to +10%
SE60 VT XW		-1.5% to +5%
Extender height range		-20 mm to +50 mm
Extender slope range		-3% to +5%
Vibratory speed		0 - 3000 rpm
Tamper-bar speed (VT XW only)		0 - 1800 rpm
Tamper-bar stroke (amplitude)	2, 4, 7 mm	(0.08", 0.16", 0.28")

* Includes extensions and end-gate shoes.

PAVER AND SCREED COMPATIBILITY CHART

	AS3143 Vibratory Screed	AS4173 Vibratory Screed	AS3251C Vibratory Screed	AS4252C Vibratory and Tamber Bar Screed	SE60 V Vibratory Screed	SE60 V XW Extra-wide Vibratory Screed	SE60 VT XW Extra-wide Vibratory and Tamber Screed
AP255E Paver	●						
AP300D Paver		●					
AP500E Paver			●	Requires Tamber Ready Paver			
AP555E Paver			●	Requires Tamber Ready Paver			
AP600D Paver			●	Requires Tamber Ready Paver			
AP655D Paver			●	Requires Tamber Ready Paver			
AP1000F Paver					●	●	Requires Tamber Ready Paver
AP1055F Paver					●	●	Requires Tamber Ready Paver

Note: Tamber ready pavers are equipped with additional hydraulics including, pump, valve, and hoses to support the tamber bar system.

OPTIONAL EQUIPMENT

- Air-ride Seat w/Heat
- Auger and Mainframe Extensions
- Ballast (front bumper)
- Cat Grade and Slope Controls
- Decelerator Pedals
- Ecological Washdown System
- Feeder Sensor (mechanical or sonic)
- Friction Steering
- Hard Top Canopy
- HID Lights
- Leveling Devices
- Lights (Working or Roading)
- Smooth/treadbar belt
- Oscillating Push Roller
- Power Folding Front Apron
- Power Mainframe Extensions
- Product Link
- Screed Extensions
- Tow-point Indicators (Upper)
- Track Plow
- Truck Hitch
- Umbrella
- Up-time Kit
- Warning Beacon
- Wide Width Paving Packages
- Windshield w/hard top canopy

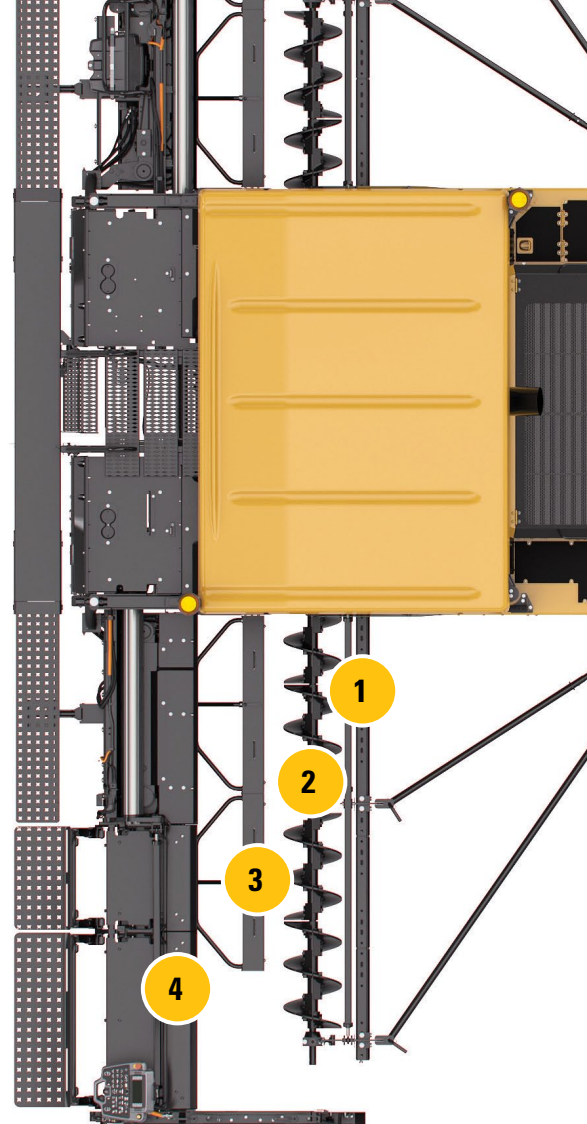
WIDE-WIDTH PAVING PACKAGES

POWER ADJUSTMENT

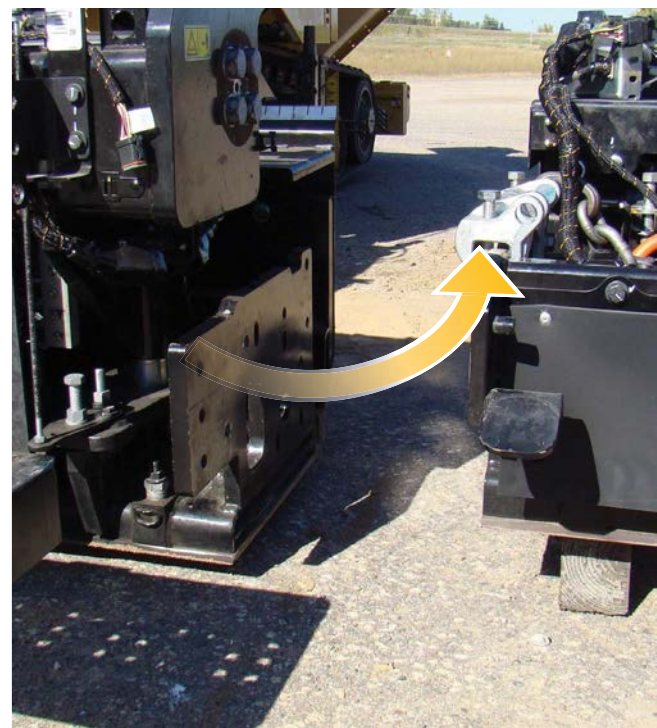
- Exclusive power controls simplify adjustment across the entire 10 m (33' 4") paving width for better mat texture and quality
- Crown Range (-1% to +5%)
- Slope Range
 - SE60 V, V XW (-3% to +10%)
 - SE60 VT XW (-3% to +5%)
- Extender Height (-20 mm to +50 mm)

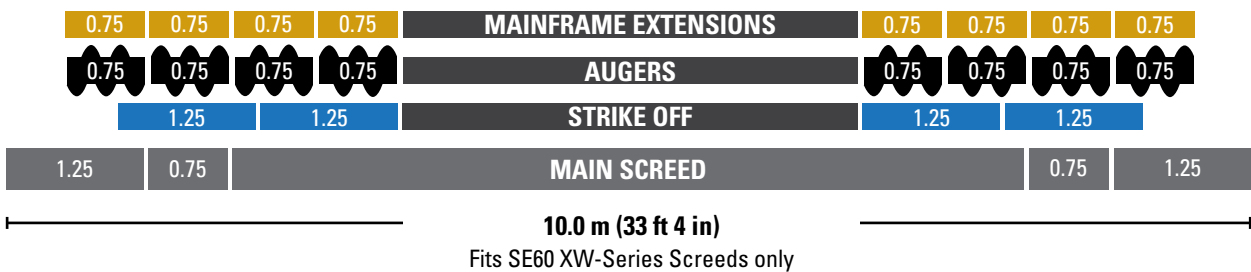
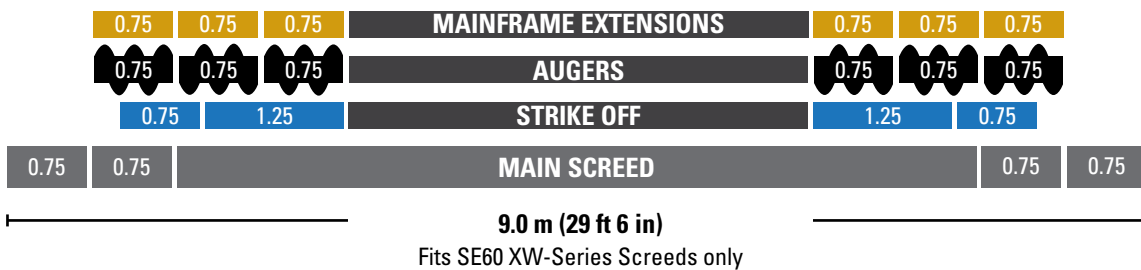
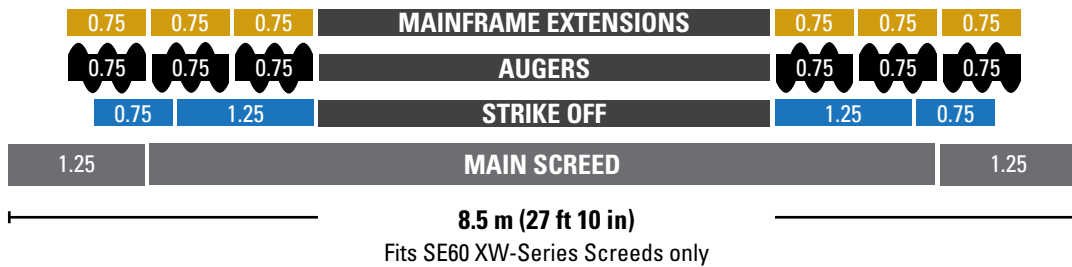
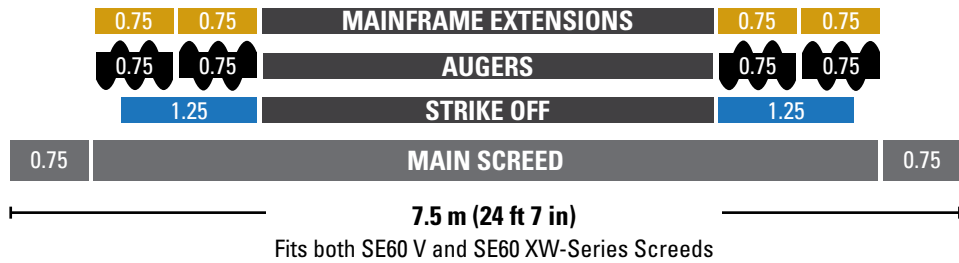
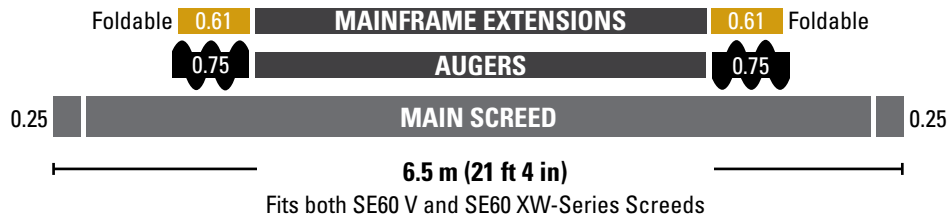
EXCLUSIVE FASTENING SYSTEM

- Screed extensions can be attached utilizing power slope on the extender
- Eliminates additional lifting device



1. Mainframe Extensions
2. Auger Extensions
3. Strike-offs
4. Screed Extensions







CAT GRADE CONTROL

FACTORY INTEGRATION, EASIER TO USE,
BETTER ACCURACY

Cat Grade and Slope is a factory-integrated guidance system that helps remove irregularities from the surface and control mat thickness for increased production, lower operating costs, and higher profitability.

Cat Dealers offer exceptional knowledge of the grade and slope system, as well as paver and screed operation, providing a single source that meets all your paving needs.

Note: Cat Pavers are able to utilize a variety of other Grade and Slope systems to support customer preferences.

USER FRIENDLY

- Operate from any of the two tractor or screed consoles
- Utilize split screen mode to monitor each side of the screed
- On-the-go sensor selection in auto-mode when utilizing the averaging beam, no need to stop and re-calibrate
- Text-based LCD displays provide visual reference
 - Available in multiple languages
 - Brightness and contrast controls for various lighting conditions
 - Previous settings automatically stored, no need to re-configure
- LCD Displays integrate machine settings to keep operator better informed of operating conditions while monitoring grade control

PRECISE CONTROL

- More accurate control, maximizes mix utilization, saves money
- True averaging, sonic sensors utilize 5 transducers, 2 readings discarded and 3 averaged
- 10-point Auto-Calibration, eliminates over/under adjustment from single calibration point
- Cross-coupling, slope and elevation maintained with height adjustments
- True 9 m (30 ft) sonic averaging beam, tow point movement is 1/3 of total grade deviation

HIGHLY RELIABLE

- Water-resistant displays
- Factory installed components, consistent routing and location
- Sealed components withstand heat, moisture, and vibration
- Built-in temperature sensors provide better reliability than bail-type sensors
- Lockable enclosure provides vandal protection
- Easy diagnostics, compatible with Cat Electronic Technician

SINGLE SOURCE PROVIDER

- Cat dealers offer complete support of entire system including paver operation, screed setup, application and service training, consulting, and parts support
- No reason to utilize outside suppliers and risk improper setup



- | | |
|---------------------------|---------------------------------|
| 1. Soft Key Adjustment | 6. Machine Condition Slider Bar |
| 2. Bench Key | 7. Target Reference |
| 3. Auto Mode | 8. Measured Reference |
| 4. Left Sensor Selection | 9. Sensor Connectivity |
| 4. Right Sensor Selection | |
| 5. Target Reference | |



“The integration is a real advantage. It has the controls on each side of the paver and each side of the screed.”

– Cat Paving Contractor



FORWARD LOOKING

PROVIDING SUSTAINABLE SOLUTIONS FOR FUTURE GENERATIONS

LOWER ENGINE EMISSIONS

- Cat engines meet market requirements for emissions standards
- Utilization of low sulfur fuels and oil limits green-house gas emissions
- Automatic engine speed control and Eco-mode reduce engine speed leading to fuel conservation, lower emissions and lower sound levels
- Faster heat-up time reduces fuel burn
- Engine after-treatment system reduces emissions

OPTIMIZED MATERIAL DELIVERY

- Precise mix delivery leads to smoother mats that last longer for future generations
- On-demand delivery results in slower moving components that extend service life and save resources
- Cat Grade and Slope System optimizes mix delivery resulting in lower costs, less usage, and smoother roads for longer life

CLEANER MORE COMFORTABLE OPERATING ENVIRONMENT

- Ventilation system redirects fumes away from the crew for a better operating environment
- Lower sound levels due to reduced engine speeds
- Machine compartments are equipped with sound suppression material, limiting fatigue on the crew and surrounding environment

LONG LIFE COMPONENTS AND FASTER SERVICE

- Long life fluids extend service life
- Remote drains ports provide clean collection of fluids
- Wash-down system utilizes eco-friendly releasing agents

THE ULTIMATE MANAGER

PRODUCT LINK HELPS REDUCE COSTS ACROSS THE FLEET

TIMELY MAINTENANCE MANAGEMENT

- Easily plan and track maintenance
- Start with “built-in” Caterpillar recommended service intervals and customize to match your fleet and job needs
- See what service has been done and what is due at a glance
- “Click-through” features make it easy to contact your Cat Dealer for service and maintenance

CUSTOMIZED ALERTS & DISPLAYS

- See all alerts on one screen, or any that you specify
- Prioritize information; service alerts, operator-generated errors, etc.
- Send alerts to the people who need them via email or text message

USER-FRIENDLY DASHBOARD

- See individual machine status instantly
- Monitor current fuel level and total usage
- Stay on top of past due alerts
- Idle vs. Work Time graph helps you monitor utilization

ROBUST GEO-FENCING

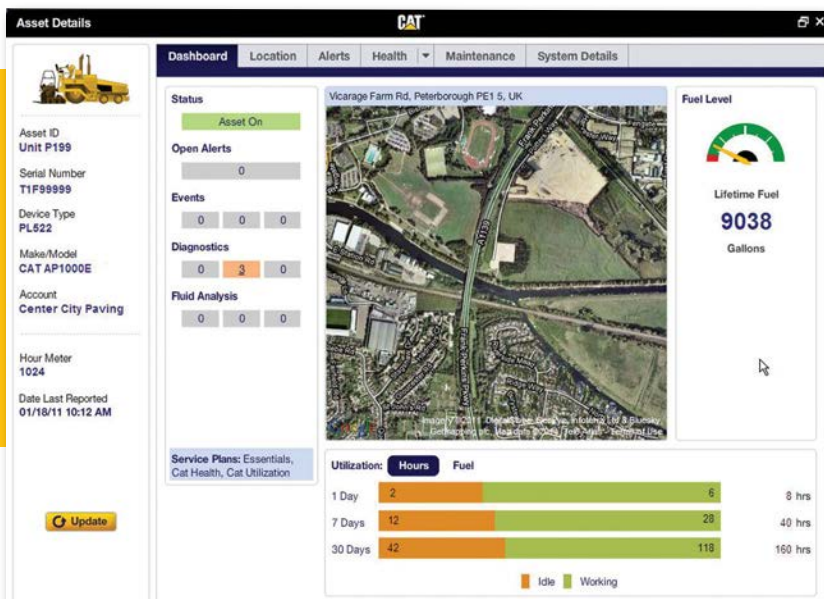
- Street maps and satellite view simplify set up of site boundaries
- Easily draw complex, accurate boundary shapes
- Provides valuable asset tracking and security monitoring tools

IDLE TIME VS. WORKING TIME

- Instantly relate and compare utilization of all assets on a job site
- Make better informed equipment decisions. Are there enough trucks delivering material or too few?

FAST PARTS ORDERING

- VisionLink™ provides “to do” checklists for common preventive maintenance and service procedures.
- “Built-in” parts lists for common procedures
- Click-through to PartStore™ and automatic loading of parts lists speed and simplify ordering.



Product Link gets you accurate, timely and useful information about the location, utilization and condition of your equipment.

SINGLE SUPPLIER

CAT DEALERS OFFER SUPPORT AND TRAINING.

CAT DEALER SUPPORT

- Cat Financial Services to meet all of your business needs
- 24 Hour Parts Support, get parts when and where you need them
- Project Consulting, optimize performance of your equipment
- Service Training, increase knowledge of machine components in order to minimize downtime
- Paver Operator Training (P.O.T.), optimize machine performance

“Until now, we didn’t realize what good customer support was.”

New Cat Paving Customer



Cat dealers offer the highest level of support available. Whether it’s parts support, application support, machine support, or financial support, we offer it. Customer satisfaction continues to be our number one goal!

PROJECT PLANNER

FREE MOBILE APPS LEND A HAND.



PAVING AMPLITUDE CALCULATOR

The Paving Amplitude Calculator App is a productivity tool that helps road construction professionals determine the proper amplitude setting for their asphalt compactor to maximize compaction efficiency.



FEATURES

- Metric and U.S. measurements
- Cat roller models are preloaded for easy calculations
- End Result specs for North America
- Method specs for Europe

DOWNLOAD THE APP

STEP 1: Open the App Store on your Apple device.

STEP 2: Search “paving amplitude”. (If using an iPad, be sure to change your search to include iPhone apps.)

STEP 3: Locate App and Install.

REQUIREMENTS

Compatible with iPhone, iPod touch, and iPad. Requires iOS 7.0 or later.



PAVING PRODUCTION CALCULATOR

The Paving Production Calculator is a tool for asphalt paving professionals to plan their paving jobs by helping to estimate trucking needs, paving speeds, compaction and other factors.



FEATURES

- Modeled after the popular Production Calculator on CD
- Metric and U.S. measurements
- Save specs for each job for later reference
- Email job summaries from your device
- **Coming soon for Android!**

DOWNLOAD THE APP

STEP 1: Open the App Store on your Apple device.

STEP 2: Search “production calculator”. (If using an iPad, be sure to change your search to include iPhone apps.)

STEP 3: Locate App and Install.

REQUIREMENTS

Compatible with iPhone, iPod touch, and iPad. Requires iOS 7.0 or later.



TRAINING & SOLUTIONS

PROVEN TO INCREASE PROFITS.

Bonuses, penalties, tight specifications and tight deadlines. Today, more than ever, you're taking on more project responsibility—and more risk. At Caterpillar we understand the challenges you face, and we have the solutions to help you minimize the risk and maximize your profitability and success.

Caterpillar Paving Products is dedicated to providing you with quality training and project consulting services. We help each crew member understand what their role is and how it effects the paving operation. Providing this type of understanding not only improves efficiency and quality, it also increases your profit.

TRAINING DESIGNED FOR YOU

- Small classes offer hands-on opportunities
- Consulting solutions ensure success on the job
- Hundreds of years of industry knowledge and experience worldwide—average of 20 years per person
- Technical training to improve your technician's troubleshooting skills and minimize machine down time
- Operations training to improve your operator's skills and increase project quality
- On-demand customized training where you need it, when you need it, to minimize the amount of time your crew is away from the job
- Project Consulting to help your crew achieve consistent paving quality and maximize the bottom line

Whether it's maintaining your equipment, improving your operator's skills, or updating your crew's techniques, Caterpillar and your Cat dealer are there to support your efforts and improve your bottom line.





SERVICE SUPPORT

GREAT PERFORMANCE STARTS WITH GREAT COMPONENTS.

Whether you are a Do-it-myself customer, Do-it-with-me customer, or a Do-it-for-me customer, your Cat dealer will help you develop a custom repair option to meet your unique needs. Cat parts are manufactured to precise specifications and are built for durability, reliability, and productivity.

Do-it-Myself – If you prefer to do the work in house, your Cat dealer can help you determine your parts needs. One of our experts will utilize Caterpillar Service Information, or can perform a (TA1) visual inspection, or (TA2) technical inspection to help you identify your parts replacement needs.

Do-it-with-Me – In addition to providing parts, your Cat dealer can supplement your repair capabilities with fully trained technicians and specialized tooling that your team may not have.

Do-it-for-Me – Your Cat dealer can manage the replacement of vital wear parts or a complete rebuild. Ask your dealer about an inspection and a repair option plan to meet your needs. Maximize your uptime and minimize your overall owning and operating costs by planning an off-season repair and annual replacement of wear parts.

Having a goal like being the paving industry sales leader is no small challenge, even for the worldwide leader in the manufacture of equipment for the construction industry.

But ever since we sold our first paving equipment in 1986, we have continued to grow. Over the years, our machines have been recognized as dependable and rugged, easy to use and highly productive.

We have introduced innovations that have changed the way the world builds roads, features that our competitors now offer on their machines.

And with each new generation of machines we introduce, more and more customers around the world make the decision to switch to Cat.

For more complete information on Cat products, dealer services, and industry solutions, visit us on the web at www.cat.com.

BUILT FOR IT.™



QEHQ1822 (10/14)
© 2014 Caterpillar
All Rights Reserved

Materials and specifications are subject to change without notice.

VisionLink is a trademark of Trimble Navigation Limited, registered in the United States and in other countries.

Featured machines in photography may include additional equipment for special applications.

CAT, CATERPILLAR, BUILT FOR IT, their respective logos, and "Caterpillar Yellow" and the POWER EDGE trade dress, as well as corporate and product identity used herein, are trademarks of Caterpillar and may not be used without permission.

