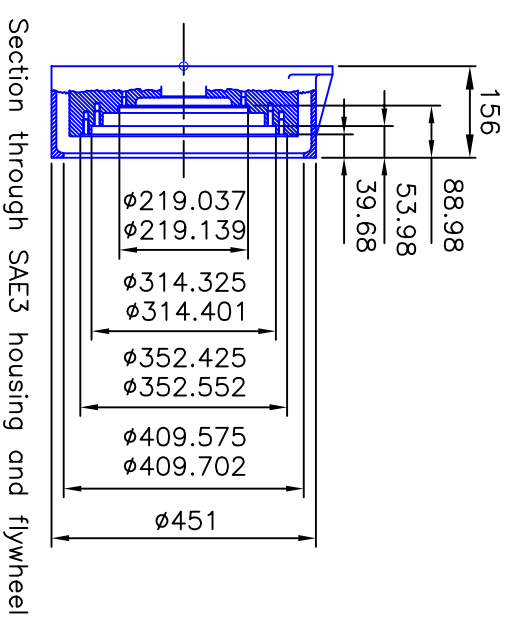
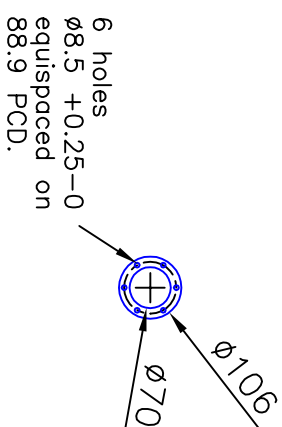
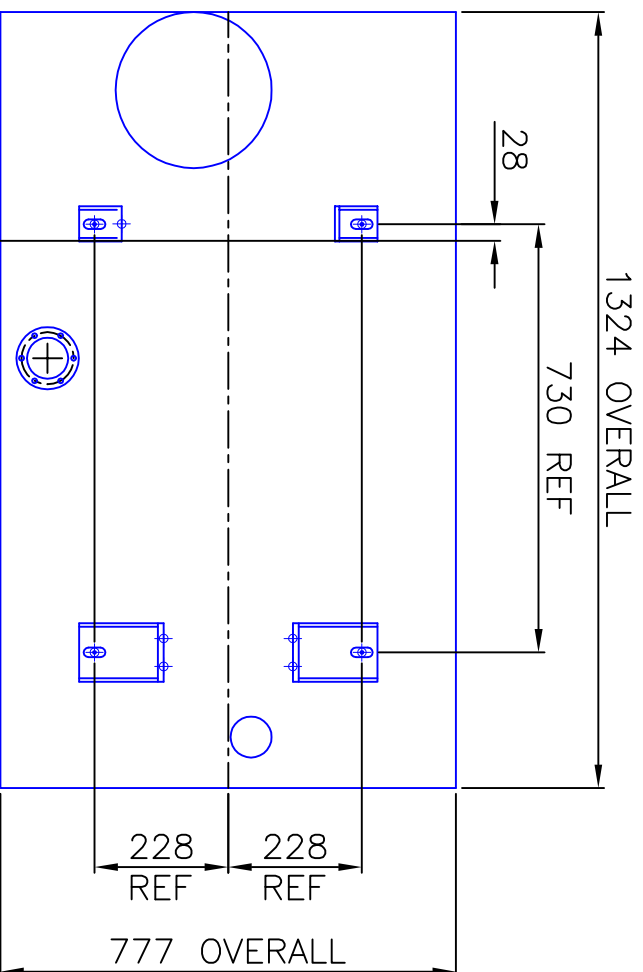


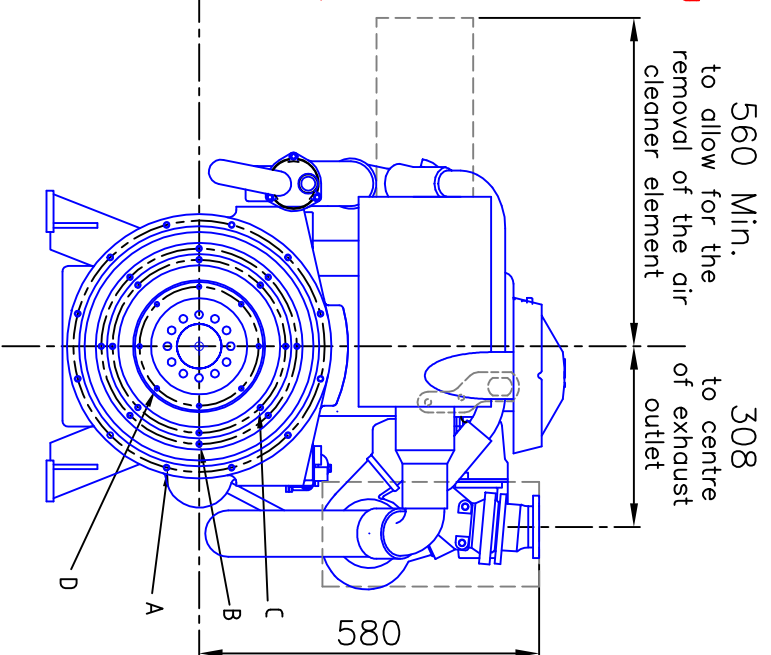
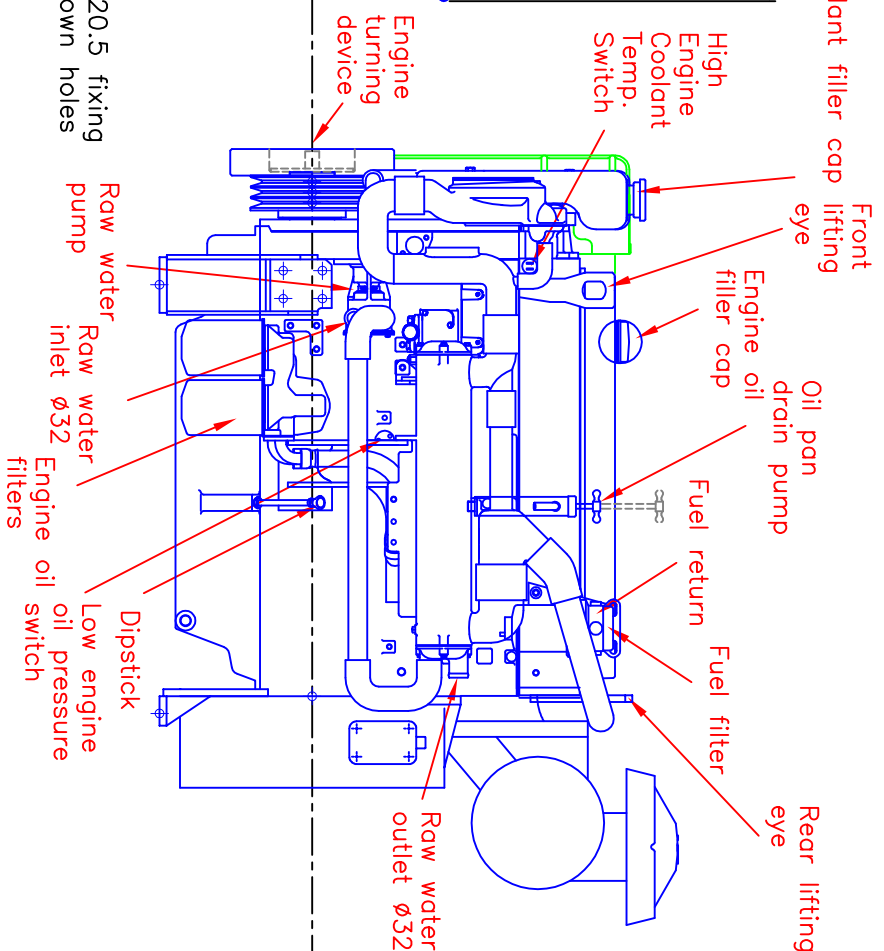
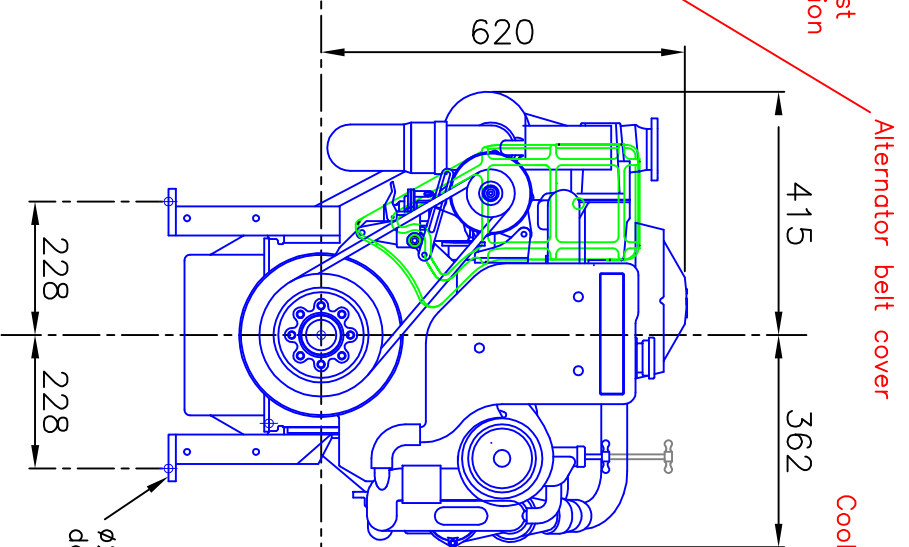
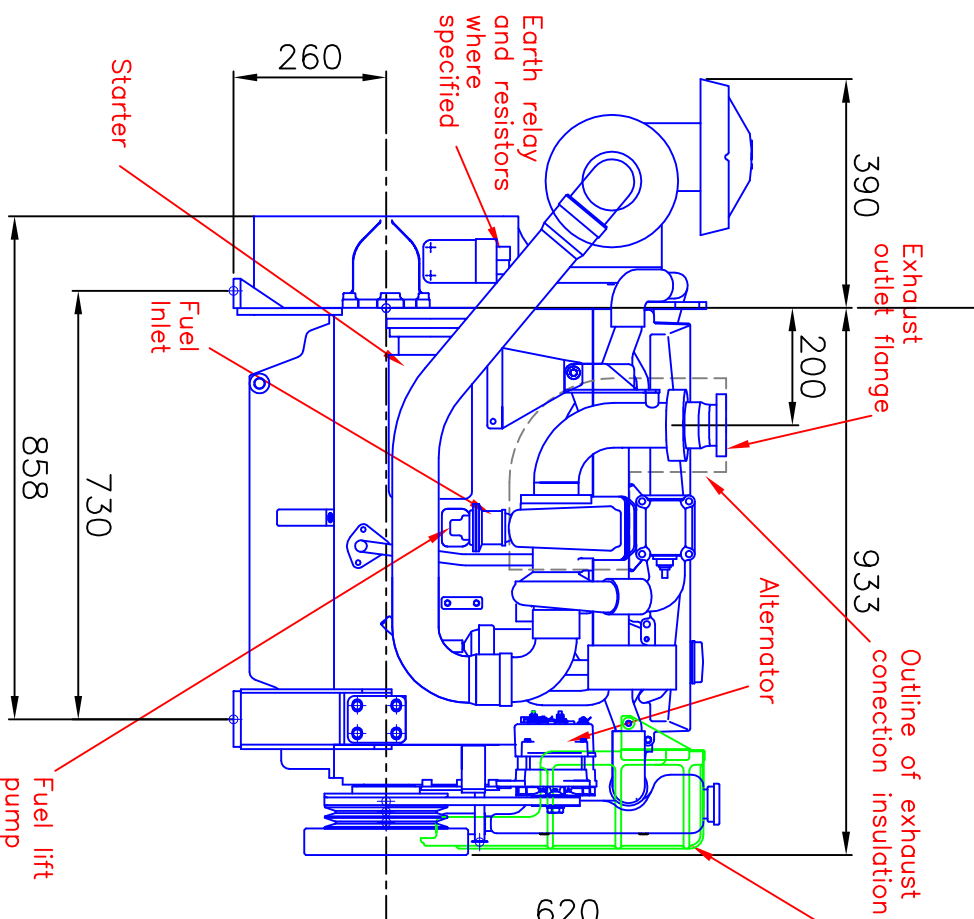
# Perkins Sabre 6TG2AM Marine Diesel Engine

For genset and constant speed applications.

Total Wet Weight – 626kg



- SAE3 Housing Hole Details
- A. 12 Holes M10 x 1.5 x 20 equispaced on a 428.63 PCD.
- Flywheel Hole Details
- B. 8 Holes 3/8 x 24UNF x 25.4 equispaced on a 333.38 PCD.
  - C. 8 Holes 3/8 x 24UNF x 25.4 equispaced on a 295.28 PCD.
  - D. 8 Holes M8 x 1.25 x 14.3 equispaced on a 203.20 PCD.



Rev 02 – Additional basic view added 17/05/12  
 Rev 01 – Additional dimensions added 15/12/11

Doc No. 7255-1-02

CATERPILLAR MARINE POWER UK LTD  
 Wimborne, Dorset, England.  
 Tel. +44(0)1202 893720  
 Fax. +44(0)1202 851700  
 E-mail. [Wimborne\\_MPC\\_post@cat.com](mailto:Wimborne_MPC_post@cat.com)  
[www.Perkins-Sabre.com](http://www.Perkins-Sabre.com)