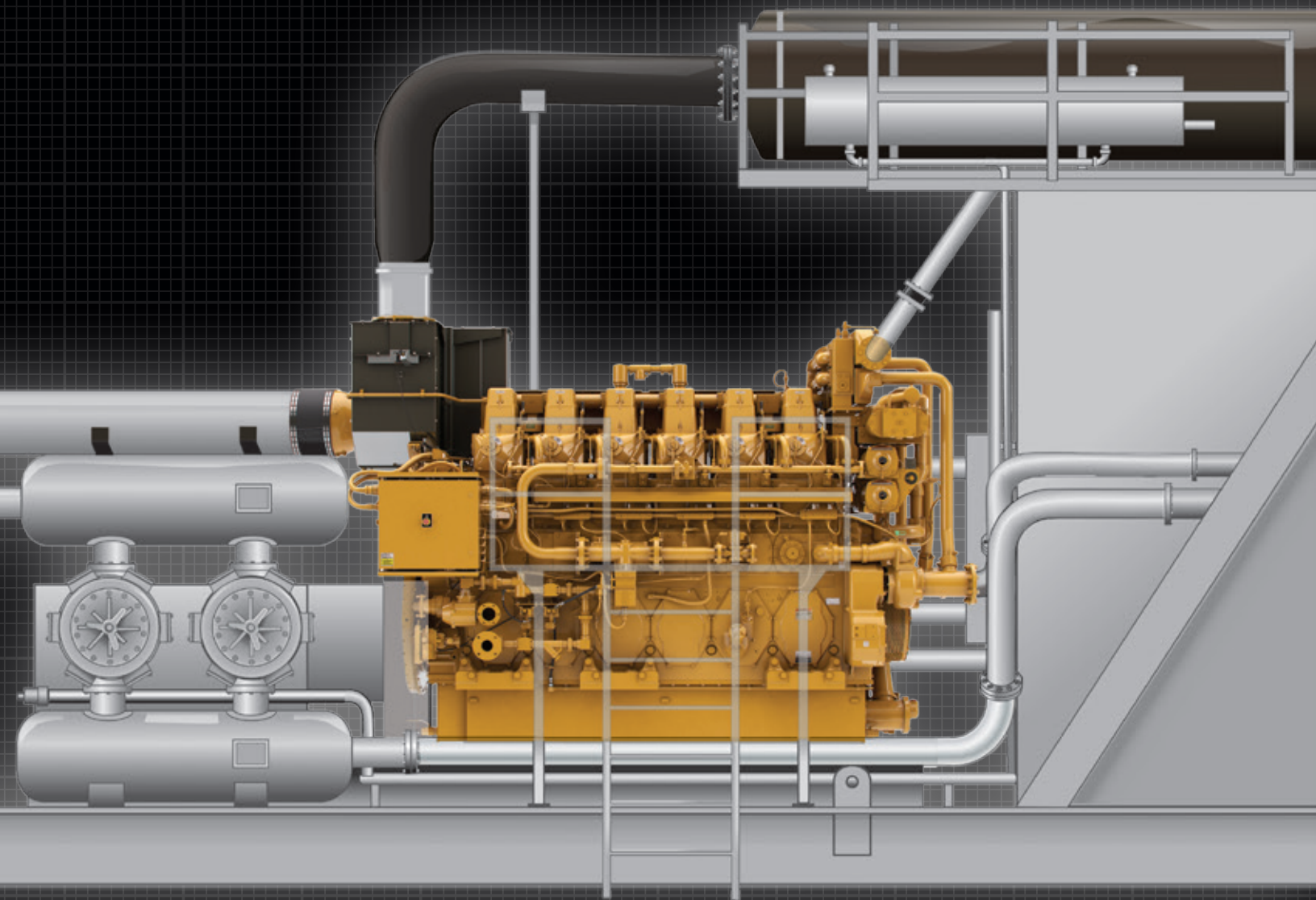


G3600

with ADEM™ A4

Cat® Engines for Gas Compression Applications



You: doing more.



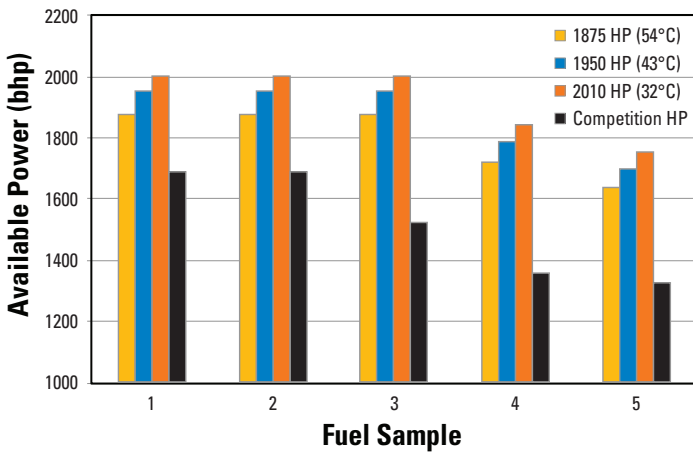
EXCEEDING EXPECTATIONS

- Increased fuel flexibility
- Expanded altitude capabilities
- Ambient-based rating feature
- 5.6% more power @ 54°C SCAC

MAXIMIZED UPTIME

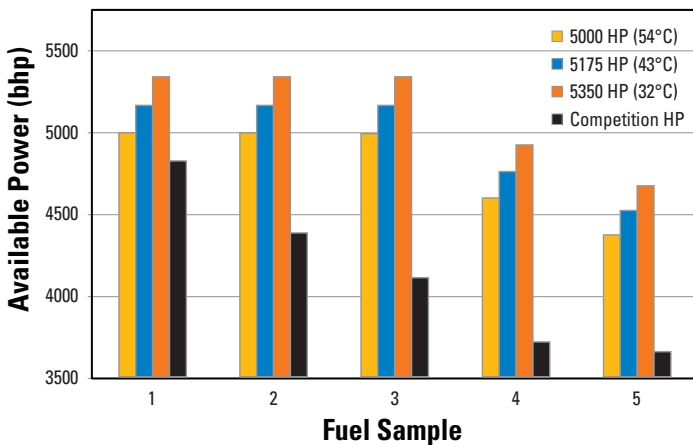
- Caterpillar design, testing, and assembly
- Industry-leading maintenance intervals
- Legendary 3600 durability, proven since 1984
- Cat® engines have long overhaul lives

G3606 with A4 Fuel Flexibility



Available power is based on aftercooler coolant inlet temperature

G3616 with A4 Fuel Flexibility



The three ratings shown are based on the customer's cooling system being able to provide the respective SCAC coolant temperatures.

Fuel Samples

| Constituent | 1 | 2 | 3 | 4 | 5 |
|----------------|------------|------------|------------|------------|------------|
| Methane | 92.27 | 76.24 | 72.56 | 54.41 | 54.70 |
| Ethane | 2.52 | 13.75 | 12.85 | 22.61 | 21.81 |
| Propane | 0.48 | 5.39 | 8.90 | 12.80 | 11.66 |
| Isobutane | 0.05 | 0.97 | 1.48 | 1.32 | 1.38 |
| Norbutane | 0.12 | 1.30 | 1.52 | 3.25 | 3.52 |
| Isopentane | 0.06 | 0.38 | 0.61 | 0.79 | 0.53 |
| Norpentane | 0.04 | 0.31 | 0.63 | 1.15 | 0.74 |
| Hexane | 0.05 | 0.33 | 1.47 | 0.49 | 1.47 |
| Heptane | 0.03 | 0.05 | 0.10 | 0.21 | 0.09 |
| Nitrogen | 3.48 | 0.08 | 0.82 | 2.17 | 2.97 |
| Carbon Dioxide | 0.90 | 1.21 | 0.00 | 0.77 | 1.13 |
| Octane | 0.00 | 0.00 | 0.05 | 0.02 | 0.00 |
| Nonane | 0.00 | 0.00 | 0.01 | 0.02 | 0.00 |
| Total | 100 | 100 | 100 | 100 | 100 |



OPTIONAL ENGINE INTERFACE PANELS

HMI Display

- 15-inch color touch screen
- Engine control and monitoring
- Configurable ECM parameters
- CSA Class 1 Div. 2 Group A, B, C, D
- Modbus and Ethernet connection
- Create custom screens for complete package monitoring

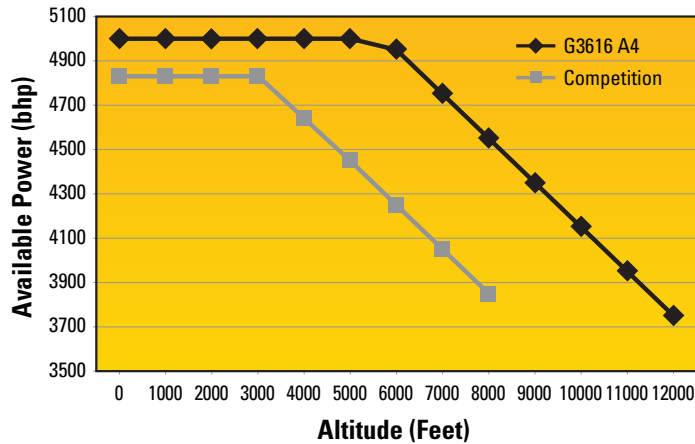


OCP 4.3 Display

- 5.5-inch monochrome display
- Engine control and monitoring
- Modbus and Ethernet connection
- Configurable analog and digital I/O
- Configurable ECM parameters

Used together, ADEM A4 with OCP 4.3 or HMI creates the optimum interface for self-monitoring and diagnostics of your engine.

G3616 with A4 Altitude Capability @ 100°F



G3600 engines with A4 have improved altitude/temperature capability that allows them to run at higher altitudes at full power before derate.

G3600 ENGINE RATINGS

| Engine | bkW | bhp | rpm | SCAC |
|--------------|------|------|------|--------------|
| G3606 | 1398 | 1875 | 1000 | 54°C (130°F) |
| | 1454 | 1950 | 1000 | 43°C (110°F) |
| G3608 | 1499 | 2010 | 1000 | 32°C (90°F) |
| | 1864 | 2500 | 1000 | 54°C (130°F) |
| | 1931 | 2590 | 1000 | 43°C (110°F) |
| G3612 | 1995 | 2675 | 1000 | 32°C (90°F) |
| | 2796 | 3750 | 1000 | 54°C (130°F) |
| | 2890 | 3875 | 1000 | 43°C (110°F) |
| G3616 | 2983 | 4000 | 1000 | 32°C (90°F) |
| | 3729 | 5000 | 1000 | 54°C (130°F) |
| | 3859 | 5175 | 1000 | 43°C (110°F) |
| | 3990 | 5350 | 1000 | 32°C (90°F) |



Power You Can Rely On

For your most rigorous work, you need dependable power. Cat engines have been tested and proven for decades to give you just that. And the global Cat dealer network is ready to help, wherever you are, whenever you need them. We're built to keep you up and running.

To learn more about Cat engines for gas compression, call your local Cat dealer or visit www.catoilandgasinfo.com.

BUILT FOR IT.™

Caterpillar Oil & Gas

AMERICAS

Caterpillar Inc.
Oil & Gas
13105 N.W. Freeway
Suite 1100
Houston, Texas 77040-6321
Tel: (+1) 713-329-2207
Fax: (+1) 713-895-4280

RUSSIA

Caterpillar Eurasia
82 Sadovnicheskaya Str.
Moscow 115035
Tel: (+7-495) 213-3340
Fax: (+7-495) 213-3372

ASIA PACIFIC

Caterpillar Asia Pte., Ltd.
Oil & Gas
7 Tractor Road
Singapore 627968
Tel: (+65) 6828-7333
Fax: (+65) 6828-7414

CHINA

Caterpillar Oil & Gas China
Room 1601 Caterpillar Tower
No. 8 Wangjing Street
Beijing 100102, P.R. China
Tel: (+86-10) 5921-0521
Fax: (+86-10) 5921-0022

EUROPE, AFRICA, AND MIDDLE EAST

Caterpillar Commercial Northern Europe Ltd.
Oil & Gas
OTV House
Wokingham Road, Rounds Hill
Bracknell, Berkshire
United Kingdom
RG42 1NG
Tel: (+44) 1344 782 920
Mobile: (+44) 7717411938
Fax: (+44) 1344 782 930

Caterpillar Motoren

GmbH & Co. KG
Oil & Gas
Falckensteiner Str. 2
D-24159 Kiel, Germany
Tel: (+49) 431 3995 3004
Fax: (+49) 431 3995 5004