



# Cat<sup>®</sup> 903C

## COMPACT WHEEL LOADER

### FEATURES:

The Cat<sup>®</sup> 903C delivers high performance with outstanding versatility. Spacious cab with joystick control keeps you comfortable throughout the work day, allowing you to get more done. Loader design delivers strength and durability with superior control.

- **Performance** – Well balanced weight and power make the 903C suitable for tasks in agriculture, landscaping, snow, construction, and industrial segments. Optional external counterweights increase lift capacity for demanding jobs.
- **Ease of Operation** – Two independent control levers for lift/tilt and auxiliary functions provide excellent bucket feel and implement modulation.
- **Power Train** – Hydrostatic drive line features a 16 km/h (10 mph) travel speed. Axles are available with front and rear diff-lock.
- **Safety** – Reduced engine overhang lends itself to excellent rear and corner visibility, keeping the operator safe and productive to the task at hand.
- **Serviceability** – Fully opening rear hood allows easy access to engine compartment featuring side-by-side coolers and transparent fuel/water separator.
- **Work Tools** – Standard Skid Steer Loader coupler and continuous auxiliary hydraulic flow enables the 903C to use a large range of Cat Skid Steer Loader hydro mechanical work tools.

## Specifications

### Engine

Engine Model	Cat C2.4*	
Gross Power	31 kW	42 hp
Net Power @ 2,200 rpm		
SAE J1349 Rating	30 kW	40 hp
ISO 9249 Rating	30 kW	40 hp
EEC 80/1269 Rating	30 kW	40 hp
Bore	87 mm	3.4 in
Stroke	102 mm	4.0 in
Displacement	2.4 L	147 in <sup>3</sup>

\*Engine meets U.S. EPA Tier 4 Interim emission standards.

### Weight

Operating Weight	4150 kg	9,150 lb
------------------	---------	----------

### Buckets

Bucket Capacities	0.6-1.0 m <sup>3</sup>	0.8-1.3 yd <sup>3</sup>
-------------------	------------------------	-------------------------

### Transmission

Travel Speed	16 km/h	10 mph
--------------	---------	--------

### Hydraulic System

Main Relief	206 bar	2,988 psi
3rd Auxiliary Flow	52 L/min	14 gal/min
Hydraulic Cycle Time – Lift	4.7 seconds	
Hydraulic Cycle Time – Dump	0.8 seconds	
Hydraulic Cycle Time – Lower, Float	3.1 seconds	

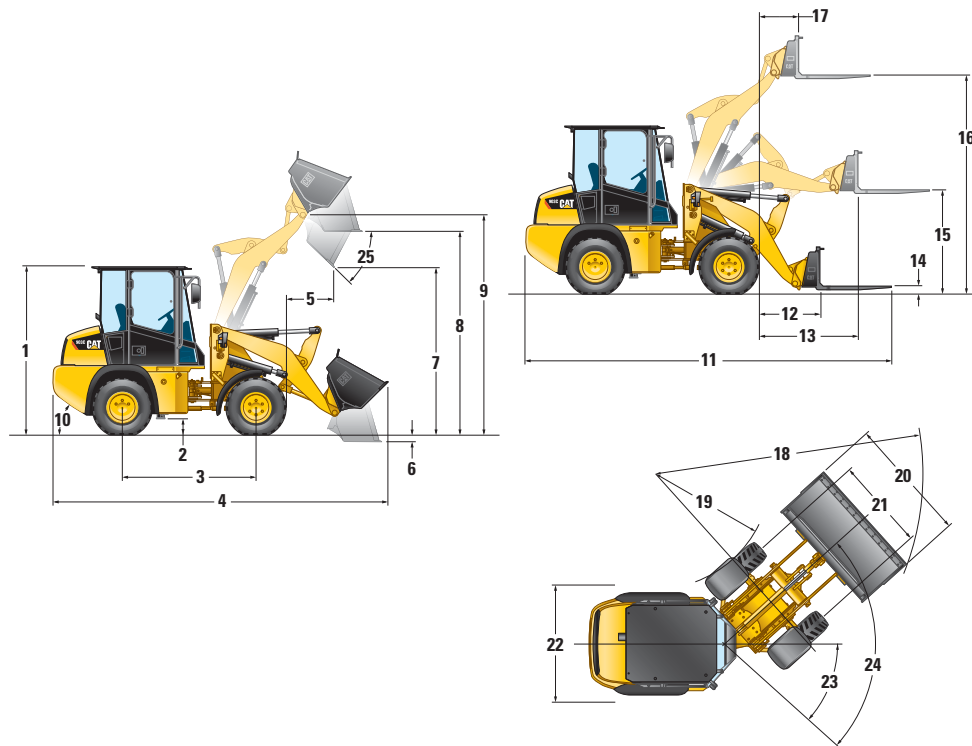
### Cab

ROPS	ISO 3471:2008	
FOPS	ISO 3449:2000 Level I	

### Service Refill Capacities

Cooling System	11 L	3 gal
Fuel Tank	43 L	11.4 gal
Hydraulic System	24 L	6.3 gal
Engine Oil	9 L	2.4 gal

# 903C Compact Wheel Loader



## Dimensions (All dimensions are approximate.)

1 Cab Height	2510 mm	8 ft 3 in
2 Ground Clearance	395 mm	1 ft 4 in
3 Wheelbase	1800 mm	5 ft 11 in
* 4 Overall Length with Bucket	4835 mm	15 ft 10 in
* 5 Reach at Maximum Dump Height	885 mm	2 ft 11 in
6 Dig Depth	200 mm	8 in
* 7 Maximum Dump Height	2430 mm	8 ft 0 in
8 Load Over Height	2940 mm	9 ft 8 in
9 Hinge Pin at Maximum Height	3225 mm	10 ft 7 in
10 Departure Angle		30°
11 Overall Length with Forks	5306 mm	17 ft 5 in
12 Reach at Level Ground	1131 mm	3 ft 9 in
13 Maximum Reach	1635 mm	5 ft 4 in
14 Fork Depth Above Ground	40 mm	2 in
15 Fork Height at Maximum Reach	1418 mm	4 ft 8 in
16 Maximum Fork Height	3143 mm	10 ft 4 in
17 Fork Reach at Maximum Height	758 mm	2 ft 6 in
* 18 Turning Radius Over Bucket	4020 mm	13 ft 2 in
** 19 Turning Radius Inside Tire	1655 mm	5 ft 5 in
* 20 Width Over Bucket	1770 mm	5 ft 10 in
21 Tire Gauge	1314 mm	4 ft 4 in
** 22 Machine Width		
12-16.5 10PR tires	1638 mm	5 ft 4 in
Flotation 33-15.5 × 16.5 tires	1708 mm	5 ft 7 in
Flexport™ 33 × 6 × 11 tires	1593 mm	5 ft 3 in
23 Articulation Angle		40°
24 Steering Angle – Left/Right		80°
25 Dump Angle at Maximum Height		40°

\*Vary with bucket size.

\*\*Vary with tire size.

Dimensions shown are based on the machine equipped with quick coupler, general purpose bucket or 1067 mm (42 in) forks and 33 × 15.5-16.5, 12PR tires.

# 903C Compact Wheel Loader

## Operating Specifications\*

Tire Size	33 × 15.5-16.5, 12PR	
Rated Bucket Capacity	0.6 m <sup>3</sup>	0.8 yd <sup>3</sup>
Breakout Force	23.0 kN	5,171 lb
Standard		
Operating Weight	4150 kg	9,150 lb
Rated Operating Load @ Full Turn, Bucket	885 kg	1,950 lb
Straight Tipping Load, Bucket	2109 kg	4,650 lb
Full Turn Static Tipping Load, Bucket	1769 kg	3,900 lb
Rackback, Transport Position	52°	
Rated Operating Load @ Full Turn, Forks (EN 474-3:2006, Firm and Level Ground, 500 mm (20 in) Load Center) (80% of FTSTL)	1134 kg	2,500 lb
Rated Operating Load @ Full Turn, Forks (EN 474-3:2006, Rough Terrain, 500 mm (20 in) Load Center) (60% of FTSTL)	862 kg	1,900 lb
With Additional Counterweight		
Operating Weight	4300 kg	9,500 lb
Rated Operating Load @ Full Turn, Bucket	953 kg	2,100 lb
Straight Tipping Load, Bucket	2268 kg	5,000 lb
Full Turn Static Tipping Load, Bucket	1905 kg	4,200 lb
Rackback, Transport Position	52°	
Rated Operating Load @ Full Turn, Forks (EN 474-3:2006, Firm and Level Ground, 500 mm (20 in) Load Center) (80% of FTSTL)	1225 kg	2,700 lb
Rated Operating Load @ Full Turn, Forks (EN 474-3:2006, Rough Terrain, 500 mm (20 in) Load Center) (60% of FTSTL)	907 kg	2,000 lb

\*Operating Specifications and Dimensions shown are based on 903C equipped with enclosed ROPS cab with air conditioning, quick coupler, 75 kg (165 lb) operator and general purpose bucket (GP) unless otherwise noted.

## Maximum Material Densities

Based on ISO 7546: 1983 and rated operating loads at full turn and without additional counterweight

General Purpose		
Bucket Type	General Purpose	
Rated Capacity	0.6 m <sup>3</sup>	0.8 yd <sup>3</sup>
Dump Height	2430 mm	96 in
Maximum Material Density	1474 kg/m <sup>3</sup>	2,437 lb/yd <sup>3</sup>
Bucket Width	1770 mm	70 in
Light Material		
Bucket Type	Light Material	
Rated Capacity	1.0 m <sup>3</sup>	1.3 yd <sup>3</sup>
Dump Height	2300 mm	91 in
Maximum Material Density	839 kg/m <sup>3</sup>	1,423 lb/yd <sup>3</sup>
Bucket Width	1880 mm	74 in

# 903C Compact Wheel Loader

## STANDARD EQUIPMENT

### POWER TRAIN

- Air cleaner, two stage with visual indicator
- Cat C2.4, 41.8 hp (31.2 kW) engine
  - Meets U.S. EPA Tier 4 Interim emission standards
- Closed circuit breather
- Cold start plugs
- Electrical fuel priming pump
- Extended life coolant protects to  $-37^{\circ}\text{C}$  ( $-34^{\circ}\text{F}$ )
- Frame mounted heavy duty axles with outboard planetary reduction
- Maintenance free, sealed for life, prop shaft and universal joints
- Transmission, 16 km/h (10 mph)

### ELECTRICAL

- 12 volt direct electric starting
- Alternator, 70A
- Battery disconnect switch
- Cab mounted fuse panel
- Ignition key start/stop switch
- Maintenance free, sealed for life, 650 CCA heavy duty battery

### OPERATOR ENVIRONMENT

- Cup holder
- Digital service hour meter
- Engine coolant temperature gauge
- Fuel level gauge
- Heavy duty, easy clean floor mat

## OPTIONAL EQUIPMENT

- Air conditioning/heater
- Alternator, 90 amp for air conditioning
- Antifreeze/coolant, extended life, protects to  $-50^{\circ}\text{C}$  ( $-58^{\circ}\text{F}$ )
- Beacon ready
- Cab with ROPS/FOPS (Level 1)
- Counterweight: 160 kg (350 lb)
- Differential lock, front and rear axles
- Eco drain, engine oil (dealer installed)
- Engine block heater 120V (dealer installed)
- Fenders
  - Standard for use with 304 mm (12 in) tires
  - Wide for use with 393 mm (15.5 in) tires
- Hydraulic auxiliary lines with quick disconnects (dealer installed)
- Radio Ready or AM/FM radio

- Operator warning system indicators:
  - Parking brake applied
  - Hydraulic oil temperature
  - Engine oil pressure
  - Service brake pressure
  - Hydraulic filter bypass
- Seat
  - Static, vinyl with 51 mm (2 in) retractable seat belt
- Two external mirrors – knock back

### OTHER STANDARD EQUIPMENT

- 3rd valve auxiliary hydraulics with continuous flow detent, standard flow
- Engine enclosure – lockable
- Guarded front headlight
- Hydraulic oil level sight gauge
- Lift arm safety brace
- Loader arm float function
- Lockable fuel filler cap
- Manual quick coupler, skid steer loader compatible
- Parking brake (secondary brake)
- Quick release fuel filter/water separator
- Reversing light
- Self-canceling direction indicators
- Work tool return to dig
- Z-bar linkage

- Seats
  - Mechanical suspension, vinyl with 51 mm (2 in) seat belt
  - Mechanical suspension, vinyl with 75 mm (3 in) seat belt
  - Mechanical suspension, fabric with 51 mm (2 in) seat belt
  - Mechanical suspension, fabric with 75 mm (3 in) seat belt
- Tires
  - 12-16.5 10PR
  - Flotation 33-15.5  $\times$  16.5
  - Flexport 33  $\times$  6  $\times$  11
- Working lights, front and rear

### WORK TOOLS

- For all work tool options, consult your Cat dealer.

For more complete information on Cat products, dealer services, and industry solutions, visit us on the web at [www.cat.com](http://www.cat.com)

AEHQ7358 (10-14)

© 2014 Caterpillar  
All Rights Reserved  
Printed in U.S.A.

Materials and specifications are subject to change without notice. Featured machines in photos may include additional equipment. See your Cat dealer for available options.

CAT, CATERPILLAR, SAFETY.CAT.COM, their respective logos, "Caterpillar Yellow" and the "Power Edge" trade dress, as well as corporate and product identity used herein, are trademarks of Caterpillar and may not be used without permission.

