

## CORE ACCEPTANCE CRITERIA

### 旧件验收标准

## Water Pumps

### 水泵

You will receive  
你将得到

#### Full Core Refund

- ◆ Housings and pulleys are not visibly cracked or broken. See Inspection Tips.
- ◆ Fully assembled and complete.
- ◆ No nonoperational damage (mishandling, excessive rust on machined surfaces, pitting, or corrosion).
- ◆ Acceptable Caterpillar® part number (Midland and Sloan pumps also acceptable for 3406 Models).

#### 全部旧件退款

- ◆ 壳体和皮带轮没有可看见的裂纹或破损。参见检查提示。
- ◆ 完全组装而且完整。
- ◆ 没有非运转性损坏（错误处置，机加工面上过度锈蚀、穴蚀或腐蚀）。
- ◆ 可接受的卡特彼勒® 零件号（对于 3406 型号 Midland 和 Sloan 泵也可接受）。

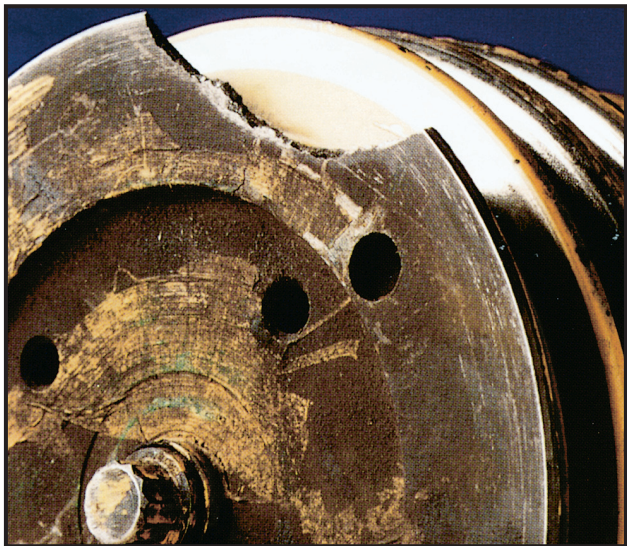


Figure 1  
图 1

Damaged pulley  
损坏的皮带轮

Add Charge  
附加费用



Figure 2  
图 2

Full Core Refund  
全部旧件退款  
Fully assembled 3406 and 3208 pumps  
完全组装的 3406 和 3208 泵

Dealers should refer to REMAN Policies and Core Management (SCLD0122), Core Management Systems and Operations procedures (SCLD0040), and Shipping Instructions (SCLD0039) in the “Operations and Core Management Tab”, and to Core Acceptance Guide Introduction (SCLD0013) in the “Core Acceptance Guidelines Tab” for additional information applicable to all cores.

有关适用于全部旧件的额外信息，代理商应参考《再制造政策和旧件管理》(SCLD0122)，《旧件管理系统和操作系统》(SCLD0040)，“操作和旧件管理标签”中的《运输规程》(SCLD0039)以及“旧件验收指导原则标签”中的《旧件验收指导说明》(SCLD0013)。

### Cracked or Broken

裂纹或破损

- Check the pulley and housing for visible cracks and damage as shown in Figure 1. Add charges will apply if these components are damaged. There will no longer be an add charge for damaged water pump impellers.
- 检查皮带轮和壳体有无图 1 中所示的可看见的裂纹和损坏。如果这些部件损坏，将收取附件费用。对于损坏的水泵叶轮不再有附加费用。

### Nonoperational Damage

非运转性损坏

- If rust can be wiped away with an emery cloth, the core will be accepted for Full Core Refund. Excessive corrosion, rust, or pitting, which are most often caused by improper storage, will result in No Core Refund.
- 如果可以用砂布擦除锈迹，可将旧件接受为“全部旧件退款”。过度腐蚀、生锈或穴蚀最有可能是因不正确的存放造成的，其结果是“无旧件退款”。

### Competitive Core Refund

竞争旧件退款

- Any 3406 water pump manufactured by Midland or Sloan will be accepted and must meet full core acceptance criteria.
- 可接受任何由 Midland 或 Sloan 制造的 3406 水泵，而且必须符合全部旧件验收标准。
- The competitive brand water pump must be interchangeable with a Caterpillar remanufactured water pump.
- 竞争品牌水泵必须可与卡特彼勒再制造水泵互换。

## Direct Purchase Criteria / 直接购买标准

Please refer to the Core Management Information System (CMIS2) Parts Information Application for all Direct Purchase pricing information. Only the parts that have Direct Purchase prices with a current end date are included in the program. Parts with non-current end dates are not included in the program.

有关所有直接购买定价信息，请参考旧件管理信息系统 (CMIS2) 零件信息应用。本程序中只包括那些具有直接购买价格并带有当前结束日期的零件。带有非当前结束日期的零件没有包括在本程序中。

Part numbers that only have a “FULL” Direct Purchase price must meet the “FULL Core Refund” exchange core acceptance criteria to receive direct purchase value. Part numbers that have both a “FULL” and “PARTIAL” Direct Purchase price must meet the applicable “FULL Core Refund” or “Damage Core Refund” exchange core acceptance criteria to receive direct purchase value.

只有一个“全额”直接购买价格的零件号必须符合“全部旧件退款”交换旧件验收标准，才能获得直接购买价值。有“全额”和“部分”直接购买价格的零件号必须符合相应的“全部旧件退款”或“受损旧件退款”交换旧件验收标准，才能获得直接购买价值。

Add charges will apply as appropriate based on the normal exchange core acceptance criteria.

何时适用附加费用将根据正常交换旧件验收标准。