

910K, 914K

Compact Wheel Loaders



	910K	914K
Engine Model*	Cat® C3.8	Cat C3.8
Rated Power	72 kW (98 PS)	72 kW (98 PS)
Bucket Capacity	1.3 m ³	1.5 m ³
Operating Load	2400 kg	2930 kg
Operating Weight	6920 kg	7980 kg

*Engine meets Japan 2011 (Tier 4 Interim) emission standards.

Experience the Difference.

Optimized Parallel Lift Z-bar Linkage

Combines the digging efficiency of a traditional Z-bar with tool carrier capabilities for superior performance and flexibility.

Cab and Controls

Large, spacious cab features excellent visibility to the front and rear, extremely low sound levels and low-effort ergonomic joystick controls so you can concentrate on your work. In cab adjustments are easy with intuitive controls and an easy to read display.

Electronic Power Management

A smooth, step-less electronically controlled hydrostatic transmission provides adjustable power to the ground and superb groundspeed control for fast digging cycles and the flexibility to efficiently perform a multitude of tasks.

Powerful Predictable Hydraulics

The system is optimized for fast cycle times while delivering higher breakout forces. Working with buckets, forks and other work tools has never been more efficient.

Work Tools

A new line of optimized Performance Series buckets and pallet forks as well as a wide range of work tools are available in a Pin On, quick coupler interface.

Serviceability

Daily service points are easily accessible. Extended service intervals and excellent service access make daily checks quick and easy, allowing you to get to work sooner.

Contents

Parallel Lift Loader Linkage.....	4
Industry Leading Operator Station.....	5
Power Train.....	6
Hydraulics	7
Options.....	8
Serviceability and Customer Support.....	9
Specifications.....	10
Standard Equipment.....	18
Optional Equipment.....	19





The Cat 910K and 914K Compact Wheel Loaders set a new standard for productivity, fuel efficiency and comfort. On-the-go operator tuned hydraulics and drivetrain adjust the machine's response to the task at hand. Low sound levels, large spacious cab and intuitive controls keep you working comfortably all day long. The new Cat Optimized Z-bar Loader linkage delivers the performance and breakout forces of a traditional Z-bar linkage with the parallelism and load handling capability of a tool carrier. Experience the new industry benchmark.

Parallel Lift Loader Linkage

Cat Optimized Z-bar Loader delivers enhanced visibility with maximum productivity.



Cat Optimized Z-bar Loader

The Cat Optimized Z-bar Loader combines the digging efficiency of a traditional Z-bar with tool carrier capabilities for great performance and versatility.

- Parallel lift and high tilt forces throughout the working range help you safely and confidently handle loads with precise control.
- Linkage features excellent visibility to the bucket cutting edge and fork tips.
- High Lift versions are also available on both models.



Industry Leading Operator Station

Superior visibility, ergonomics and comfort.



Best Seat on the Job Site

Enjoy all day comfort in the spacious K Series cab:

- Ergonomic joystick for loader functions. Joystick includes integrated Forward/Neutral/Reverse switch and differential lock.
- Easy access to the cab with ergonomically placed grab rails, steps and large platform.
- Low sound levels.
- Superior visibility to the work tool due to the wide windshield and Cat Optimized Z-bar Loader.
- Standard air conditioning with defrost/demist.
- A standard mechanical suspension seat with lumbar and seat back tilt adjustment.



Easy to Use Instrument Panel and Display

The front console provides easy access to vital machine information, along with lights and ECO mode switches. Eco mode saves fuel and reduces engine wear with an engine speed control. The right hand console holds secondary functions beyond the all-in-one joystick controller.

- New soft touch keypad on the right hand console contains new electronic functions and settings including implement modulation, HST modulation, ride control, bucket positioner, lift kickout, throttle lock, and rimpull control.
- LCD read out for: travel speed, speed range selection, hydraulic oil temperature, service hour meter, engine coolant temperature, and fuel level.
- Indicators: diesel particulate filter, starting aid, engine, electrical, parking brake, directional turn signals, brakes, high beams, action required notice, continuous flow, hydraulic filter bypass, bucket float, creeper, directional F/N/R.

Power Train

Hydrostatic drive adjusts to be faster or smoother for the task.

Intelligent Power Management

The Cat power train is computer controlled which actively monitors engine, operator input and drive train load, adjusting the hystat transmission to keep the machine working at peak efficiency.

Engine

The Cat C3.8 turbo engine provides cleaner, quieter operation while delivering superior performance and durability. The engine meets Japan 2011 (Tier 4 Interim) emission requirements. The engine also features:

- The C3.8 uses an active regeneration system which requires no operator interaction under normal conditions.
- Automatic, electronic, self-priming fuel pump encourages good maintenance practice. At the service interval, simply install a clean, dry filter element and then turn the ignition key to ON. The engine will be self-primed and ready to start in less than 20 seconds.
- Three separate fill points accommodate differently sized containers.
- The engine is serviceable from either side of the chassis.
- The easily accessible diesel particulate filter has a minimum 3,000 hour cleaning service interval. The on-board monitor will advise when diesel ash cleaning service is needed.
- Focused on fuel efficiency, significantly reducing owning and operating costs.
- Easy access to all service points to get to work sooner.



Transmission

- The HST modulation feature allows the operator to increase the directional shift responsiveness for faster loading cycles, or adjust for finer control for sensitive tasks such as moving heavy pallets.
- Rimpull Control feature enables the operator to match available tractive power to underfoot conditions, helping reduce tire wear.
- Creeper Control precisely adjusts the machine ground speed when using work tools.
- Throttle Lock feature allows you to maintain constant engine RPM regardless of travel speed.
- Thus, pairing Creeper Control and Throttle Lock, the operator can easily control the hydraulic power going to the work tool, while optimizing ground speed for best operation.
- Three speed ranges ensure maximum controllability for any task.

Axles, Brakes and Inching Function

Fully locking front and rear differential axles are standard and can be engaged at full torque on-the-go below 6 km/h, with a button on the joystick. The enhanced modulation of the inching function utilizes the first half of brake pedal engagement to hydrostatically decelerate without any wear on the braking system. This allows the operator to find a rhythm in V-cycle truck loading, for instance, using the throttle and inching/braking pedal together for a faster loader while controlling ground speed. The brake system includes independent service brakes on the front and rear axles. The parking brake is mechanically activated and released with a hand lever next to the operator's seat.

Hydraulics

Operator tuned hydraulics matches responsiveness to the task.

Hydraulic System

K Series machines feature a new electro-hydraulic control system. The load-sensing, variable flow system on the 914K senses work demand and adjusts flow and pressure to match. This allows full hydraulic forces at any engine speed. The hydraulic system in the 910K is powered by a gear pump for quick response times.

- The new electronic joystick operation is finely tuned for smooth operation, yet fast cycle times.
- The Implement Modulation feature provides three settings for faster, more responsive hydraulics for repetitive tasks like truck loading. Or, this feature can adjust for smoother hydraulics needed with heavy fork loads or more restrictive areas.
- An electronic Return to Dig bucket positioner feature levels the bucket as the loader comes down after dumping. This speeds cycle times by letting the operator focus on the next dig point rather than setting the bucket position.
- The Lift Kickout feature prevents the loader from exceeding a pre-set height, ideal for working inside a building with lower height restrictions. Once the joystick is pulled back into a soft detent, the operator releases the joystick as the hydraulics continue to the pre-set height.
- The third function auxiliary hydraulics can be set for Continuous Flow when using hydro-mechanical work tools.
- Ride Control is available to smooth the ride, keep the tires in contact with the ground and maximize material retention.



Options

Customize your machine to meet your needs.

Configure the Machine the Way You Want It

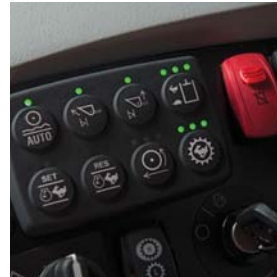
A variety of options are available on the Cat K Series Compact Wheel Loaders to suit your specific operator comfort and application needs. See your Cat dealer for more information about the features below and additional options.



Coupler Options



High Lift



Road and Load Options



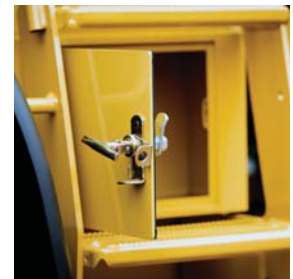
Turbine Precleaner



Metal Screen



Demand Fan



Tool Box



Wide Fender



*3rd and 4th Function
Hydraulics*



Work Tool Electrical Harness

Additional options include:

- Supplemental Steering
- Machine Security System
- High Traction Motor (910K)
- Ride Control
- Creeper Control
- ROPS Canopy
- Two Man Cab for Snow Removal
- Mud Guard
- Rear Under Mirror
- Center Counterweight
- Back-up Alarm
- Snow Tires
- Anti-freeze Coolant (-50° C)
- Rotating Beacon
- Rear Window Shade

Serviceability

Easy service to keep your machine working.

All service points are easily accessible. Three large service doors can be opened and closed in any order to give full access to filters and service points. Extended service intervals reduce service time and maximize uptime. Additional service features include:

- Convenient access door for quick fueling through left service door.
- Convenient access door for coolant fill.
- Caterpillar electric fuel priming pump for ease of service.
- Easy access to battery terminals for jump starts.
- Single plane cooling system for engine and hydraulics.
- Top mounted air conditioner condenser for easy clean out.
- Product Link™ ready (standard).



Customer Support

Unmatched support makes the difference.



Renowned Cat Dealer Support

Your Cat dealer is ready to help you every step of the way. From new or used machine sales, to rental or rebuild options, your Cat dealer can provide an optimal solution to your business needs.

Unsurpassed worldwide parts availability, trained technicians and customer support agreements maximize your machine uptime.

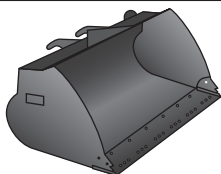
910K, 914K Compact Wheel Loaders Specifications

Engine

	910K	914K
Engine Model	Cat C3.8	Cat C3.8
Rated Power	72 kW (98 PS)	72 kW (98 PS)
RPM at Rated Power	2,400 rpm	2,400 rpm
Rated Torque	321 N·m	321 N·m
Peak Torque	336 N·m	336 N·m
Torque Rise	17%	17%
RPM at Peak Torque	1,500 rpm	1,500 rpm
Bore	100 mm	100 mm
Stroke	120 mm	120 mm
Displacement	3.8 L	3.8 L

- Net power ratings are tested at the reference conditions for the specified standard.
- Net power shown is the power available at the flywheel when the engine is equipped with alternator, air cleaner, diesel exhaust filter, and fan at minimum speed.
- No derating required up to 3000 m altitude. Auto derate protects hydraulic and transmission systems.
- Flywheel per the SAE reference conditions when the fan is at maximum speed.
- Cat C3.8 engine meets Japan 2011 (Tier 4 Interim) emission requirements.
- K Series Compact Wheel Loaders have an active regeneration system with a long life Diesel Particulate Filter.

Buckets



- Performance Series Buckets utilize a long floor and open throat resulting in easy loading and good material retention.

	910K	914K
General Purpose	1.3-1.5 m ³	1.5 m ³

Weights

	910K	914K
Operating weight – Standard Lift	6920 kg	7980 kg
Operating weight – High Lift	7450 kg	8070 kg

- Specifications shown are for a machine configured with general purpose bucket, bolt-on cutting edges, counterweights, additional guarding, 75 kg operator, and standard tires.
 - 910K is configured with a 1.3 m³ bucket with bolt-on cutting edge and standard counterweights.
 - 914K is configured with 1.5 m³ bucket with bolt-on cutting edge and standard counterweights.

910K, 914K Compact Wheel Loaders Specifications

Steering



- Steering system uses a dedicated pump with dual double acting cylinders.

	910K	914K
Steering articulation angle each direction	40°	40°
Steering cylinder: double acting		
Bore diameter	60 mm	60 mm
Rod diameter	35 mm	35 mm
Stroke	400 mm	400 mm
Maximum flow – steering pump	60 L/min	84 L/min
Maximum working pressure – steering pump	189 kg/cm ²	215 kg/cm ²

Loader Hydraulic System



- The 914K implement system uses a dedicated load sensing variable displacement pump with dual double acting lift cylinders and a single double acting tilt cylinder. The 910K implement system is similar, but uses a gear pump.
- 3rd and 4th function flow is proportionally controlled through the joystick, and can be held at any flow rate with the Continuous Flow function.

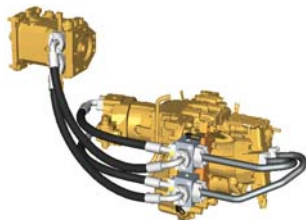
	910K	914K
Main relief pressure	240 kg/cm ²	280 kg/cm ²
Maximum pump flow	100 L/min	125 L/min
Maximum flow – implement pump		
3rd function	95 L/min	95 L/min
4th function	95 L/min	95 L/min
Maximum working pressure – implement pump	214 kg/cm ²	214 kg/cm ²

910K, 914K Compact Wheel Loaders Specifications

Service Refill Capacities

	910K	914K
Cooling system	15 L	15 L
Fuel tank	160 L	160 L
Hydraulic system	85 L	85 L
Hydraulic tank (refill)	52 L	52 L
Engine crankcase	13 L	13 L
Transmission (gear box)	3.2 L	3.2 L
Axle		
Front, center	7.5 L	7.5 L
Front, each hub	2.2 L	2.2 L
Rear, center	7.5 L	7.5 L
Rear, each hub	2.2 L	2.2 L

Transmission



- Creeper control allows maximum speed range adjustability from 0 to 10 km/h in Speed Range 1. Changing from Low Range to High Range is on-the-go for added convenience.

	910K	914K
Forward		
Low range, speed range 1	10 km/h	10 km/h
Low range, speed range 2	20 km/h	20 km/h
High range	34 km/h	39 km/h
Reverse		
Low range, speed range 1	10 km/h	10 km/h
Low range, speed range 2	20 km/h	20 km/h
High range	30 km/h	30 km/h

910K, 914K Compact Wheel Loaders Specifications

Power Train



- Power train is fully hydrostatic, operating with twin motors on a gear reduction system to amplify torque. A built-in clutch on one motor de-clutches at higher speeds to gain maximum travel speed.

**Differential front locking axle can be engaged on the go at full torque up to 6 km/h to keep your momentum in tough conditions or climbing uphill.

	910K	914K
Front axle	Fixed	Fixed
Traction aid**	Locking differential	Locking differential
Rear axle	Oscillating	Oscillating
Oscillation	± 11 degrees	± 11 degrees
Traction aid	Locking differential	Locking differential
Brakes		
Service brakes	Inboard wet disc	Inboard wet disc
Park brake	Cable applied, spring release	Cable applied, spring release

Tires

	910K	914K
Tire size, standard	16.9-24 10PR	17.5-25 12PR
Tire size, optional	16.9-24 10PR snow	17.5-25 12PR snow
Tire size, optional	16.9-24 12PR	
Tire size, optional	16.9-24 12PR snow	

- Wheel sets are interchangeable between the 910K and 914K.

Cab



- ROPS: SAE J1040 MAY94, ISO 3471-1994.
- FOPS: SAE J/ISO 3449 APR98, Level II, ISO 3449 1992 Level II.
- Cat cab and Rollover Protective Structures (ROPS) are standard in North America and Europe.
- The declared dynamic operator sound pressure level per ISO 6396:2008**, when properly installed and maintained, is:
 - Deluxe cab: 75 dB(A)

**The measurements were conducted with the cab doors and windows closed and at 70% of the maximum engine cooling fan speed. The sound level may vary at different engine cooling fan speeds.

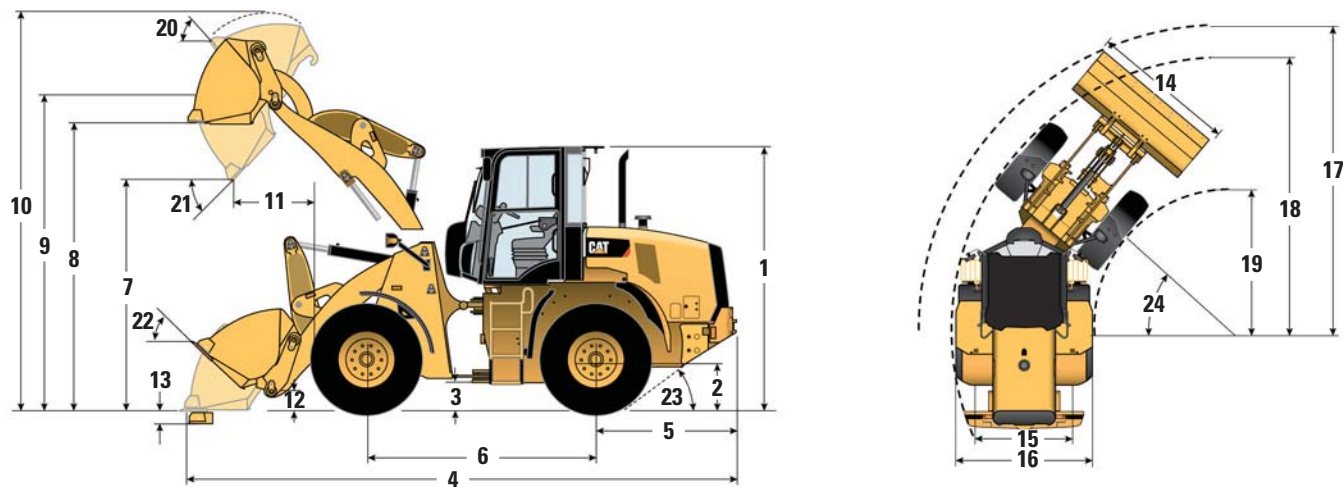
Operating Specifications

	910K	914K
Full turn tipping load – Standard Lift	4810 kg	5860 kg
Full turn tipping load – High Lift	4470 kg	5710 kg
Operating load – Standard Lift	2400 kg	2930 kg
Operating load – High Lift	2230 kg	2350 kg
Dumping Clearance (45° dump)	2850 mm	2820 mm
Dumping Reach (45° dump)	765 mm	790 mm
Steering articulation angle each direction	40°	40°

910K, 914K Compact Wheel Loaders Specifications

Dimensions

All dimensions are approximate. Dimensions vary with bucket, couplers, and tire choice.



	910K	914K
	Standard Lift – Pin On	Standard Lift – Pin On
** 1 Height: ground to cab	3035 mm	3095 mm
** 2 Height: ground axle center	605 mm	640 mm
** 3 Height: ground clearance	345 mm	405 mm
* 4 Length: overall	6225 mm	6290 mm
5 Length: rear axle to bumper	1590 mm	1615 mm
6 Length: wheel base	2600 mm	2600 mm
* 7 Dumping clearance: bucket at 45°	2850 mm	2820 mm
** 8 Clearance: level bucket	3420 mm	3460 mm
** 9 Height: bucket pin	3675 mm	3715 mm
** 10 Height: overall	4525 mm	4620 mm
* 11 Dumping reach: bucket at 45°	765 mm	790 mm
12 Carry height: bucket pin	320 mm	320 mm
** 13 Dig depth	115 mm	90 mm
14 Width: bucket	2320 mm	2400 mm
15 Width: tread center	1725 mm	1800 mm
16 Width: over tires	2185 mm	2260 mm
17 Turning radius: over bucket	5150 mm	5205 mm
18 Turning radius: outside of tires	4665 mm	4700 mm
19 Turning radius: inside of tires	2480 mm	2440 mm
20 Rack angle at full lift	57°	57°
21 Dump angle at full lift	47°	48°
22 Rack angle at carry	42°	41°
23 Departure angle	33°	33°
24 Articulation angle	40°	40°
Operating weight	6920 kg	7980 kg

*Vary with bucket.

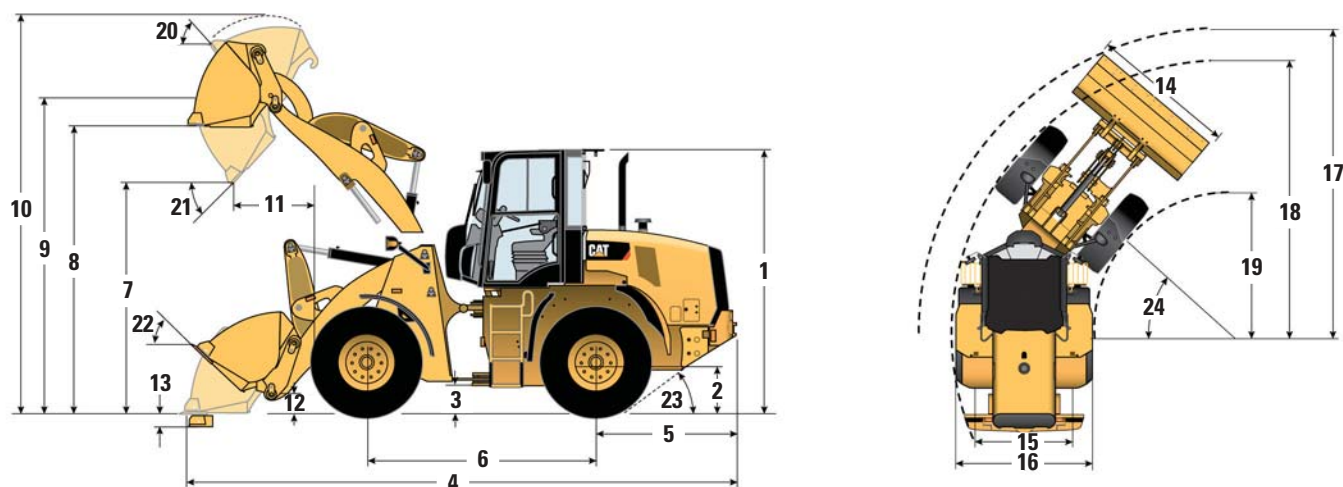
**Vary with tire.

Dimensions listed are for a machine configured with general purpose pin on buckets, bolt-on cutting edges, full fuel tank, 75 kg operator, and standard tires.

910K, 914K Compact Wheel Loaders Specifications

Dimensions

All dimensions are approximate. Dimensions vary with bucket, couplers, and tire choice.



	910K	914K
	High Lift – Pin On	High Lift – Pin On
** 1 Height: ground to cab	3035 mm	3095 mm
** 2 Height: ground axle center	605 mm	640 mm
** 3 Height: ground clearance	345 mm	405 mm
* 4 Length: overall	6760 mm	6835 mm
5 Length: rear axle to bumper	1615 mm	1615 mm
6 Length: wheel base	2600 mm	2600 mm
* 7 Dumping clearance: bucket at 45°	3210 mm	3175 mm
** 8 Clearance: level bucket	3775 mm	3815 mm
** 9 Height: bucket pin	4030 mm	4070 mm
** 10 Height: overall	4880 mm	4975 mm
* 11 Dumping reach: bucket at 45°	985 mm	1010 mm
12 Carry height: bucket pin	485 mm	485 mm
** 13 Dig depth	295 mm	270 mm
14 Width: bucket	2320 mm	2400 mm
15 Width: tread center	1725 mm	1800 mm
16 Width: over tires	2185 mm	2260 mm
17 Turning radius: over bucket	5380 mm	5440 mm
18 Turning radius: outside of tires	4665 mm	4700 mm
19 Turning radius: inside of tires	2480 mm	2440 mm
20 Rack angle at full lift	59°	59°
21 Dump angle at full lift	43°	44°
22 Rack angle at carry	50°	49°
23 Departure angle	33°	33°
24 Articulation angle	40°	40°
Operating weight	7450 kg	8070 kg

*Vary with bucket.

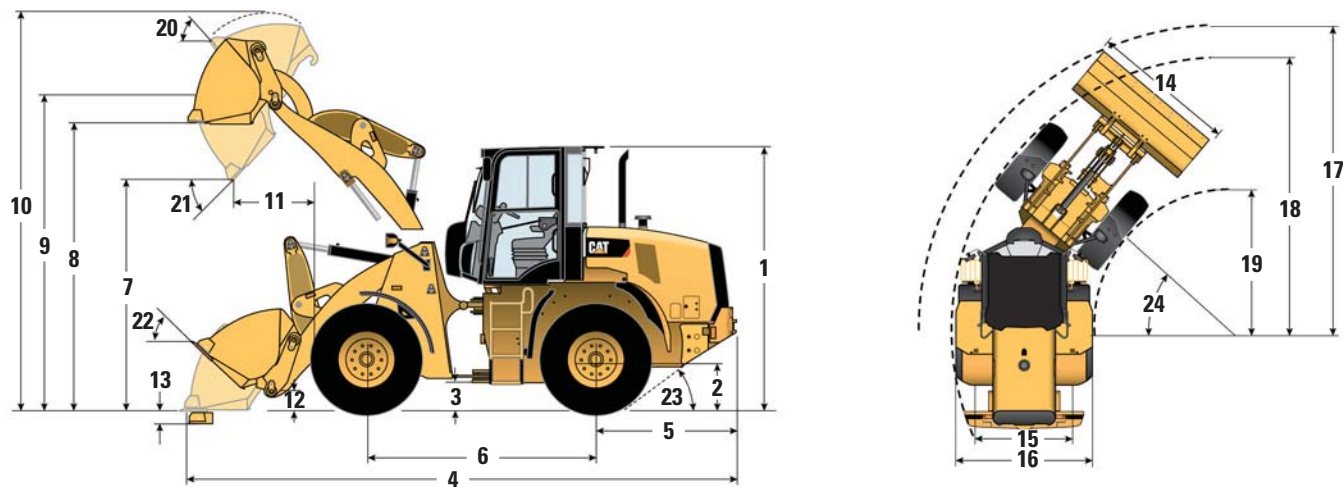
**Vary with tire.

Dimensions listed are for a machine configured with general purpose pin on buckets, bolt-on cutting edges, full fuel tank, 75 kg operator, and standard tires.

910K, 914K Compact Wheel Loaders Specifications

Dimensions

All dimensions are approximate. Dimensions vary with bucket, couplers, and tire choice.



	910K	914K
	Standard Lift – Quick Coupler	Standard Lift – Quick Coupler
** 1 Height: ground to cab	3035 mm	3095 mm
** 2 Height: ground axle center	605 mm	640 mm
** 3 Height: ground clearance	345 mm	405 mm
* 4 Length: overall	6335 mm	6395 mm
5 Length: rear axle to bumper	1590 mm	1615 mm
6 Length: wheel base	2600 mm	2600 mm
* 7 Dumping clearance: bucket at 45°	2780 mm	2750 mm
** 8 Clearance: level bucket	3420 mm	3460 mm
** 9 Height: bucket pin	3675 mm	3715 mm
** 10 Height: overall	4585 mm	4680 mm
* 11 Dumping reach: bucket at 45°	845 mm	870 mm
12 Carry height: bucket pin	320 mm	320 mm
** 13 Dig depth	115 mm	90 mm
14 Width: bucket	2320 mm	2400 mm
15 Width: tread center	1725 mm	1800 mm
16 Width: over tires	2185 mm	2260 mm
17 Turning radius: over bucket	5190 mm	5245 mm
18 Turning radius: outside of tires	4665 mm	4700 mm
19 Turning radius: inside of tires	2480 mm	2440 mm
20 Rack angle at full lift	57°	57°
21 Dump angle at full lift	48°	48°
22 Rack angle at carry	42°	41°
23 Departure angle	33°	33°
24 Articulation angle	40°	40°
Operating weight	7260 kg	8320 kg

*Vary with bucket.

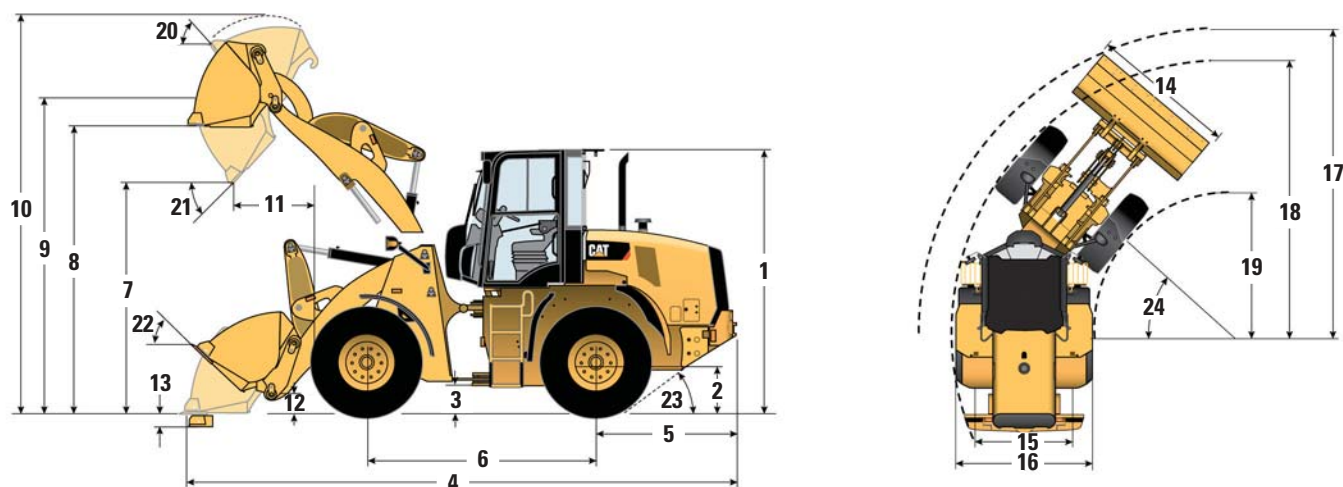
**Vary with tire.

Dimensions listed are for a machine configured with general purpose pin on buckets, bolt-on cutting edges, full fuel tank, 75 kg operator, and standard tires.

910K, 914K Compact Wheel Loaders Specifications

Dimensions

All dimensions are approximate. Dimensions vary with bucket, couplers, and tire choice.



	910K	914K
	High Lift – Quick Coupler	High Lift – Quick Coupler
** 1 Height: ground to cab	3035 mm	3095 mm
** 2 Height: ground axle center	605 mm	640 mm
** 3 Height: ground clearance	345 mm	405 mm
* 4 Length: overall	6865 mm	6940 mm
5 Length: rear axle to bumper	1615 mm	1615 mm
6 Length: wheel base	2600 mm	2600 mm
* 7 Dumping clearance: bucket at 45°	3140 mm	3100 mm
** 8 Clearance: level bucket	3775 mm	3815 mm
** 9 Height: bucket pin	4030 mm	4070 mm
** 10 Height: overall	4920 mm	5035 mm
* 11 Dumping reach: bucket at 45°	1060 mm	1085 mm
12 Carry height: bucket pin	485 mm	485 mm
** 13 Dig depth	295 mm	270 mm
14 Width: bucket	2320 mm	2400 mm
15 Width: tread center	1725 mm	1800 mm
16 Width: over tires	2185 mm	2260 mm
17 Turning radius: over bucket	5435 mm	5495 mm
18 Turning radius: outside of tires	4665 mm	4700 mm
19 Turning radius: inside of tires	2480 mm	2440 mm
20 Rack angle at full lift	59°	59°
21 Dump angle at full lift	44°	44°
22 Rack angle at carry	50°	49°
23 Departure angle	33°	33°
24 Articulation angle	40°	40°
Operating weight	7800 kg	8400 kg

*Vary with bucket.

**Vary with tire.

Dimensions listed are for a machine configured with general purpose pin on buckets, bolt-on cutting edges, full fuel tank, 75 kg operator, and standard tires.

910K, 914K Standard Equipment

Standard Equipment

Standard equipment may vary. Consult your Cat dealer for details.

POWER TRAIN

- Cat C3.8 electronic turbo diesel engine
 - Direct injection, fuel system
 - Common rail fuel injection – 3 stage
 - Japan 2011 (Tier 4 Interim)
 - Active regeneration, minimal operator input required
- Cooled EGR NO_x reduction
- Particulate matter reduction
- Fuel: Ultra Low Sulfur Diesel @ <15 ppm
- Engine Oil: CJ-4
- Electric fuel pump with four micron filtration
- S-O-SSM port, transmission oil
- Hydrostatic transmission, 20 km/h
- Lubed for life universal joints
- Forward-Neutral-Reverse on joystick and column shift
- 100% locking differentials, while moving
- Brakes, service
 - Enclosed, wet-disc full hydraulic
- Brakes, parking (also secondary brake)
 - Mechanical on drive-line
- Radiator, serviceable core, single plane
- Air cleaner, radial seal, dual filters
- Air inlet heater starting aid
- Cooling fan, hydraulic
- Radiator expansion tank
- Tires, 16.9-24 10PR (910K)
- Tires, 17.5-25 12PR (914K)

LOADER

- Parallel lift, Z-bar loader
- Ground access grease points

HYDRAULICS

- Priority steering
- Hydraulics, two valve, one joystick
- Hydraulic diagnostic pressure taps
- S-O-S port, hydraulic oil
- Hydraulic oil cooler – single plane
- Hydraulically driven cooling fan
- Pump, variable displacement piston (914K)
- Pump, gear (910K)

ELECTRICAL

- 80-ampere alternator
- Battery, heavy duty
- Halogen flood lights (front and rear)
- Directional Signals (front and rear)
- 12 volt direct electric starting
- Ignition key start/stop switch
- Switch, battery disconnect key
- Steering wheel mounted warning horn
- Product Link ready wiring

OPERATOR ENVIRONMENT

- ROPS/FOPS cab, pressurized and sound suppressed
- Hydraulic control lever lockout
- Electro hydraulic implement controls
- Product Link Japan
- AM/FM radio
- Gauges
 - Engine coolant temperature
 - Hydraulic oil temperature
 - Fuel level
 - Speedometer
 - Digital hour meter
- Operator warning system indicators:
 - Brake charge pressure low
 - Engine malfunction
 - Park brake applied
 - Electrical system voltage low
 - Hydraulic oil filter bypass
 - Action indicator
 - Diesel particulate filter

- Interior light
- Door
- Seat
 - Fabric or vinyl
 - Adjustable height, backrest, armrest
 - Seat belt, retractable
- Wiper/washer front (intermittent)
- Wiper/washer rear
- Tinted front glass, laminated
- Side and rear glass, tempered
- Adjustable steering column
- Rear window defrost
- Rearview mirrors, outside (two)
- Storage box with cup holder
- Ground level door release
- Internal 12V power source
- External 12V power source

FLUIDS

- Extended life coolant antifreeze, protected to –36° C hydraulic oil
- Cat Advanced HYDOTM 10

CHASSIS

- Fenders, front and rear
- Engine enclosure – lockable
- Recovery hitch
- Vandalism protection – locked service points
- Counterweight

NOTE: Not all features are available in all regions. See your Cat dealer for more information.

Optional Equipment

Optional equipment may vary. Consult your Cat dealer for details.

- High traction motor, 39 km/h (910K)
- Precleaner
- Loader arrangement, pin on, high lift
- Loader arrangement, quick coupler
- Loader arrangement, quick coupler, high lift
- Hydraulics, three valve, two lever
- Hydraulics, three valve, two lever, high lift
- Hydraulics, four valve, two lever
- Fan cooling, on demand
- Supplemental steering
- ROPS canopy
- Ride Control
- Creeper Control
- Heater
- Blind, rear
- Security system, machine
- Tires, 16.9-24-10PR L-2 snow (910K)
- Tires, 16.9-24 12PR L-2 (910K)
- Tires, 16.9-24 12PR L-2 snow (910K)
- Tires, 17.5-25-12PR L-2 snow (914K)
- Guard, hose, three valve, canopy
- Guard, hose, four valve, canopy
- Guard, hose, three valve, high lift, canopy
- Guard, coupler hose, standard lift, canopy
- Guard, coupler hose, high lift, canopy
- Metal screen
- Wide fenders
- Wide fenders for snow removal
- Mud guard
- Beacon, rotating
- Harness, wiring, work tool
- Alarm, back-up
- Tool box, lockable
- Rear under mirror
- Center counterweight
- Anti-freeze coolant (−50° C)
- Plate, snow removal
- Wiper, snow removal
- Tools, snow removal
- 2 man cab for snow removal
- Electric front glass defogger (2 man cab)
- Tachograph (2 man cab)
- 1.5 m³ light material bucket (pin on/hook)
- Pallet forks (hook, tine length: 1350 mm)
- Angling plow (pin on/hook)
- Slide angling plow (pin on/hook)
- Multi plow (pin on/hook)

NOTE: Not all features are available in all regions. See your Cat dealer for more information.

For more complete information on Cat products, dealer services,
and industry solutions, visit us on the web at **www.cat.com**

AEHQ7263 (07-2014)

© 2014 Caterpillar
All rights reserved

Materials and specifications are subject to change without notice.
Featured machines in photos may include additional equipment.
See your Cat dealer for available options.

CAT, CATERPILLAR, SAFETY.CAT.COM, their respective logos,
“Caterpillar Yellow” and the “Power Edge” trade dress, as well
as corporate and product identity used herein, are trademarks
of Caterpillar and may not be used without permission.

