



# Cat<sup>®</sup> M322D MH

## WHEEL MATERIAL HANDLER

### FEATURES:

- **Engine** – The EU Stage IIIA compliant C6.6 offers increased performance and reliability while reducing fuel consumption and sound levels.
- **Environmentally Responsible Design** – Helping to protect our environment, the engine has low operator and spectator sound levels, longer filter change intervals and is more fuel-efficient.
- **Hydraulics** – The state of the art load-sensing hydraulic system provides you with faster cycle times and increased productivity on any material handling job.
- **Serviceability** – For increased safety, all daily maintenance points are accessible from ground level. A centralized greasing system allows lubrication of critical points.
- **Operator Comfort** – The totally redesigned operator station maximizes comfort while increasing safety. The available auto-weight adjusted air-suspension seat with heated and cooled ventilated cushions improves operator comfort. Safety is enhanced by the color monitor and standard rear-mounted camera.
- **Undercarriage** – Various undercarriage configuration with blade and outriggers are available to provide the best solution for you.

## Specifications

### Engine

Engine Model	Cat <sup>®</sup> C6.6 with ACERT™ Technology
Ratings	2,000 rpm
Gross Power	129 kW (175 hp)
Net Power	
ISO 9249	123 kW (167 hp)
EEC/80/1269	123 kW (167 hp)
Bore	105 mm
Stroke	127 mm
Displacement	6.6 L
Cylinders	6
Maximum Torque at 1,400 rpm	750 N-m

- EU Stage IIIA (distributed through transitional provisions), ADSD-N EPA/ARB Flexibility Engine and non-current Tier 3 or Stage IIIA emissions for territories other than EU and ADSD-N.
- Full engine net power up to 3000 m altitude.

### Hydraulic System

Tank Capacity	225 L
System	350 L
Maximum Pressure	
Implement Circuit	
Normal	350 bar
Heavy Lift	375 bar
Travel Circuit	350 bar
Auxiliary Circuit	
High Pressure	350 bar
Medium Pressure	200 bar
Swing Mechanism	340 bar
Maximum Flow	
Implement/Travel Circuit	350 L/min
Auxiliary Circuit	
High Pressure	250 L/min
Medium Pressure	40 L/min
Swing Mechanism	112 L/min

# M322D MH Wheel Material Handler

## Cab/FOGS

- Cab with Falling Object Guard Structure (FOGS) meets ISO 10262.

## Weights

MH Boom	
Rear Dozer Only	20 400 kg
Rear Dozer, Front Outriggers	21 600 kg
Front and Rear Outriggers	21 850 kg
With MH Undercarriage	22 900 kg
With MH Undercarriage and Push Blade	23 600 kg
VA Boom	
Rear Dozer Only	20 700 kg
Rear Dozer, Front Outriggers	21 900 kg
Front and Rear Outriggers	22 150 kg
With MH Undercarriage	23 200 kg
With MH Undercarriage and Push Blade	23 900 kg
One-Piece Boom	
Rear Dozer Only	20 050 kg
Rear Dozer, Front Outriggers	21 250 kg
Front and Rear Outriggers	21 500 kg
With MH Undercarriage	22 550 kg
With MH Undercarriage and Push Blade	23 250 kg
Sticks	
MH Straight	1100 kg
MH Drop Nose Short	910 kg
MH Drop Nose Long	1080 kg
Digging Short	650 kg
Digging Medium	700 kg
Digging Long	780 kg
MH Push Blade (with MH Undercarriage)	675 kg
Dozer Blade	920 kg
Outriggers	1260 kg
Counterweights	
Standard	4400 kg
Optional	5400 kg

- M322D HCR – Machine weight with Hydraulic Cab Riser, medium stick/ MH 5.9 m stick, 4400 kg counterweight, with operator and full fuel tank, without work tool. Weight varies depending on configuration. Inflatable 10.00-20 tires.

## Swing Mechanism

Swing Speed	9 rpm
Swing Torque	56 kN·m

## Transmission

Forward/Reverse	
1st Gear	7 km/h
2nd Gear	25 km/h
Creeper Speed	
1st Gear	3 km/h
2nd Gear	12 km/h
Drawbar Pull	112 kN
Maximum Gradeability	52%

## Tire Options

- 10.00-20 (dual solid rubber)
- 11.00-20 (dual pneumatic)

## Undercarriage

Ground Clearance	380 mm
Maximum Steering Angle	35°
Oscillation Axle Angle	± 6°
Minimum Turning Radius	
Standard Axle	
Outside of Tire	6800 mm
End of VA Boom	7800 mm
End of One-Piece Boom	9300 mm

## Service Refill Capacities

Fuel Tank Capacity	385 L
Cooling	37 L
Engine Crankcase	15 L
Rear Axle Housing (Differential)	14 L
Front Steering Axle (Differential)	11 L
Final Drive	2.5 L
Powershift Transmission	2.5 L

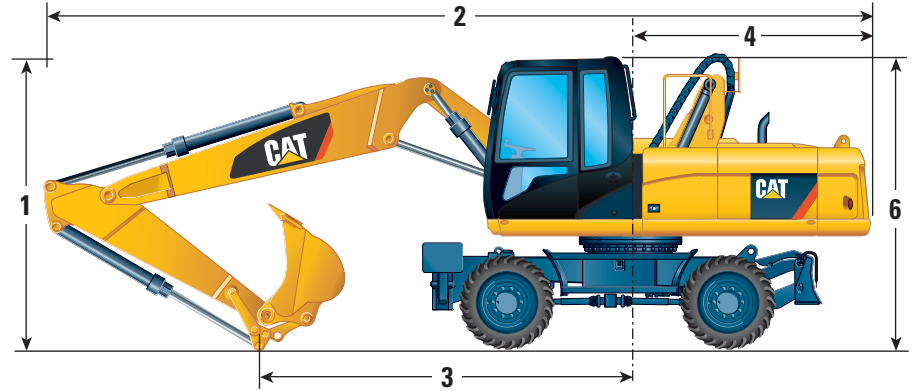
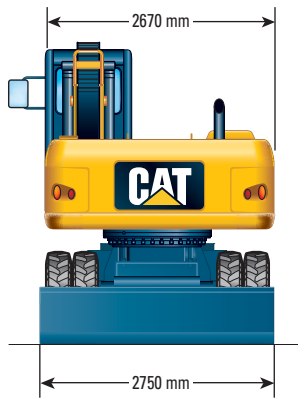
## Sound Levels

- Exterior Sound
- The labeled spectator sound power level measured according to the test procedures and conditions specified in 2000/14/EC is 103 dB(A).

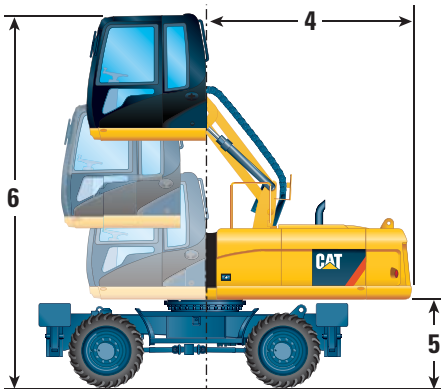
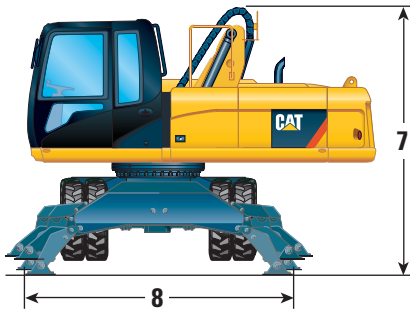
## STANDARD EQUIPMENT (See M322D MH Wheel Material Handler Specalog [AEHQ6288-01] for list)

## OPTIONAL EQUIPMENT (See M322D MH Wheel Material Handler Specalog [AEHQ6288-01] for list)

# M322D MH Wheel Material Handler



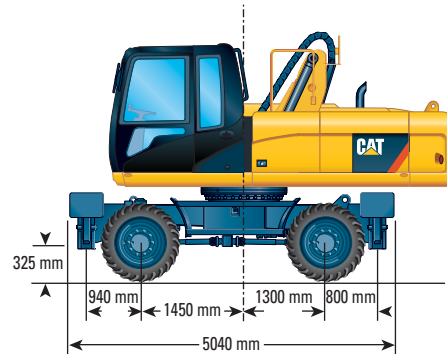
**Dimensions with Standard Undercarriage (with pneumatic tires)** (All dimensions are approximate.)



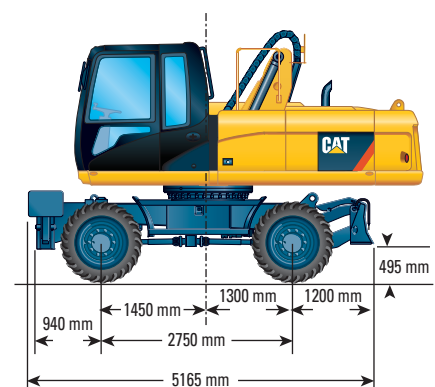
	VA Boom	One-Piece Boom
<b>1 Shipping Height*</b>		
2200 mm Stick	3400 mm	3400 mm
2500 mm Stick	3400 mm	3400 mm
2900 mm Stick	3400 mm	3400 mm
<b>2 Shipping Length</b>		
2200 mm Stick	9550 mm	9750 mm
2500 mm Stick	9550 mm	9720 mm
2900 mm Stick	9540 mm	9720 mm
<b>3 Support Point</b>		
2200 mm Stick	4380 mm	4270 mm
2500 mm Stick	3830 mm	3810 mm
2900 mm Stick	3530 mm	3440 mm
<b>4 Tail Swing Radius</b>	2820 mm	2820 mm
<b>5 Counterweight Clearance</b>	1310 mm	1310 mm
<b>6 Cab Height with Hydraulic Cab Riser</b>		
Lowered	3240 mm	3240 mm
Raised	5640 mm	5640 mm
Lowered with Guard Falling Object	3370 mm	3370 mm
<b>7 Height of Tray Group Flex</b>	3400 mm	3400 mm
<b>8 Stabilizer Width on Ground</b>	3960 mm	3960 mm

\*Shipping height may depend of the height of the Tray Group Flex (7).

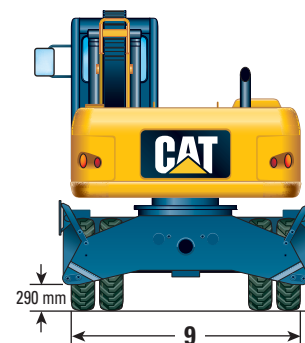
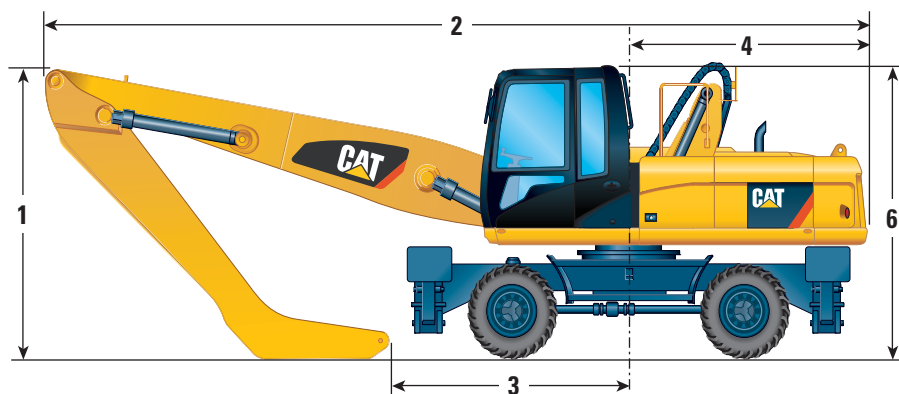
**Undercarriage with 2 sets of outriggers**



**Undercarriage with 1 set of outriggers and dozer**



# M322D MH Wheel Material Handler



## Dimensions with MH Undercarriage (with pneumatic tires) (All dimensions are approximate.)

### 1 Shipping Height\*

4800 mm Straight Stick	3400 mm
4900 mm Drop Nose Stick	3600 mm
5900 mm Drop Nose Stick (Removed)	3400 mm
5900 mm Drop Nose Stick (Installed)	5285 mm

### 2 Shipping Length

4800 mm Straight Stick	9870 mm
4900 mm Drop Nose Stick	9870 mm
5900 mm Drop Nose Stick (Removed)	9930 mm
5900 mm Drop Nose Stick (Installed)	15 130 mm

### 3 Support Point

4800 mm Straight Stick	3250 mm
4900 mm Drop Nose Stick	3250 mm
5900 mm Stick (fully extended)	15 010 mm
Stick Removed	7110 mm

### 4 Tail Swing Radius

	2820 mm
--	---------

### 5 Counterweight Clearance

	1310 mm
--	---------

### 6 Cab Height with Hydraulic Cab Riser

Lowered	3240 mm
Raised	5640 mm
Lowered with Guard Falling Object	3370 mm

### 7 Height of Tray Group Flex

	3400 mm
--	---------

### 8 Wheel Base

	2750 mm
--	---------

### 9 Undercarriage Width

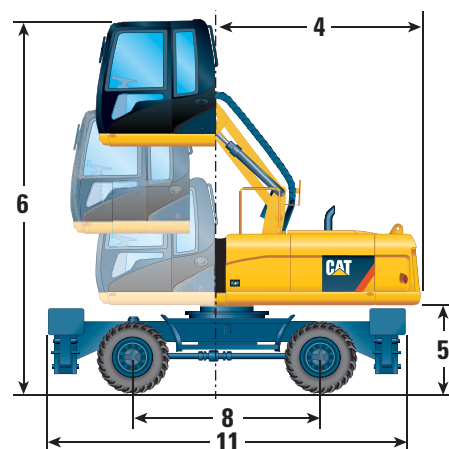
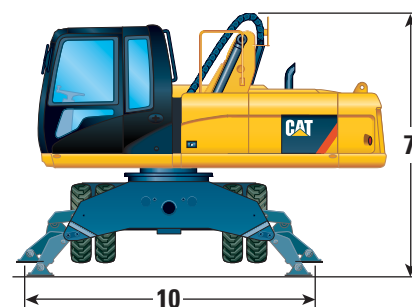
	2990 mm
--	---------

### 10 Stabilizer Width on Ground

	4360 mm
--	---------

### 11 Undercarriage Length

	5250 mm
--	---------



\*Shipping height may depend of the height of the Tray Group Flex (7).

For more complete information on Cat products, dealer services, and industry solutions, visit us on the web at [www.cat.com](http://www.cat.com)

© 2013 Caterpillar Inc.  
All Rights Reserved  
Printed in U.S.A.

Materials and specifications are subject to change without notice. Featured machines in photos may include additional equipment. See your Cat dealer for available options.

CAT, CATERPILLAR, SAFETY.CAT.COM, their respective logos, "Caterpillar Yellow" and the "Power Edge" trade dress, as well as corporate and product identity used herein, are trademarks of Caterpillar and may not be used without permission.

AEHQ6332-01 (02-13)  
Replaces AEHQ6332

