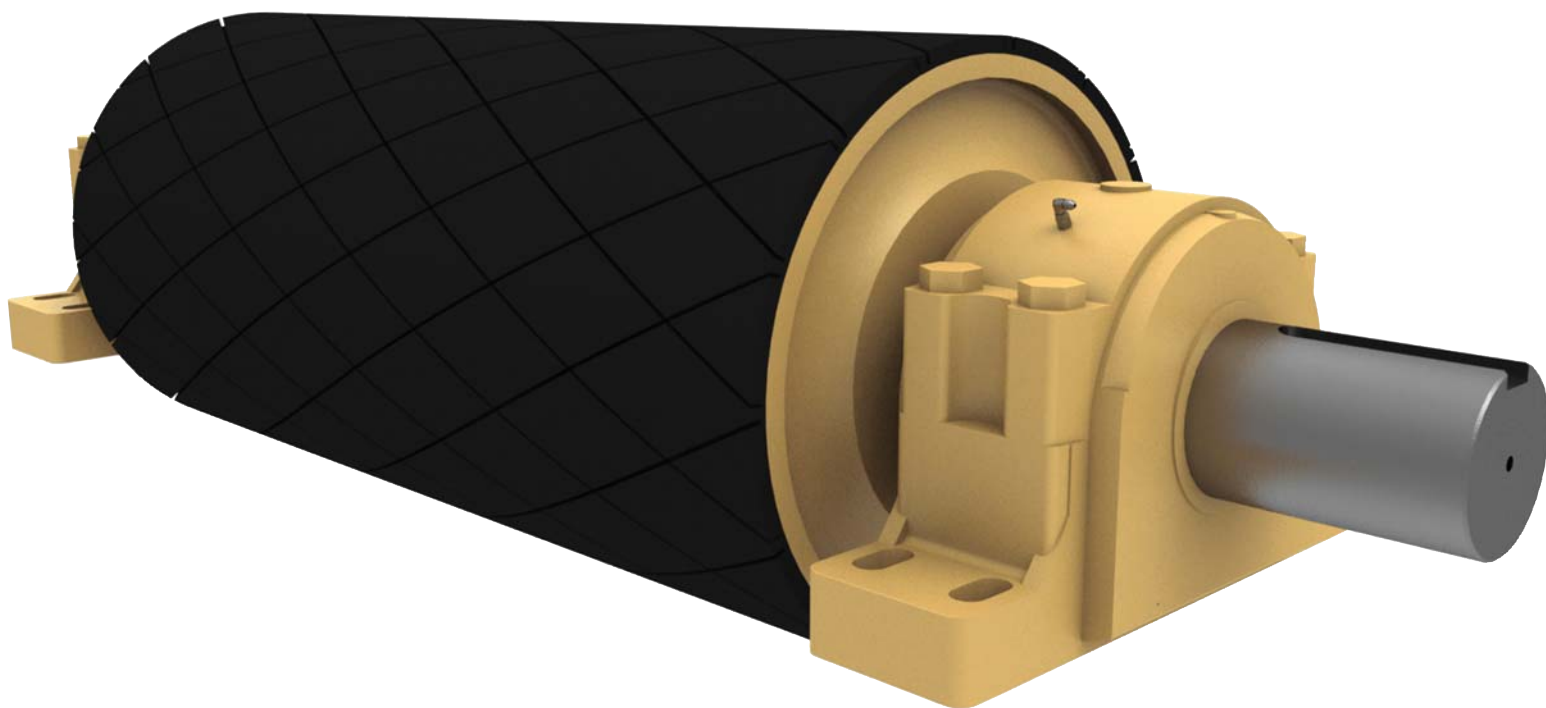


Engineered Class Conveyor Pulleys



Application

Surface and Underground

Design Type

T-Bottom and Turbo-Disc

Pulley Specifications

Designed to meet specific tension requirements for any conveyor system

Belt Widths

Up to 2400 mm (96 in)

Lagging Type

Plain, Diamond Grooved, Ceramic, Spiral

Transfer your drive's power to the belt at the highest efficiency

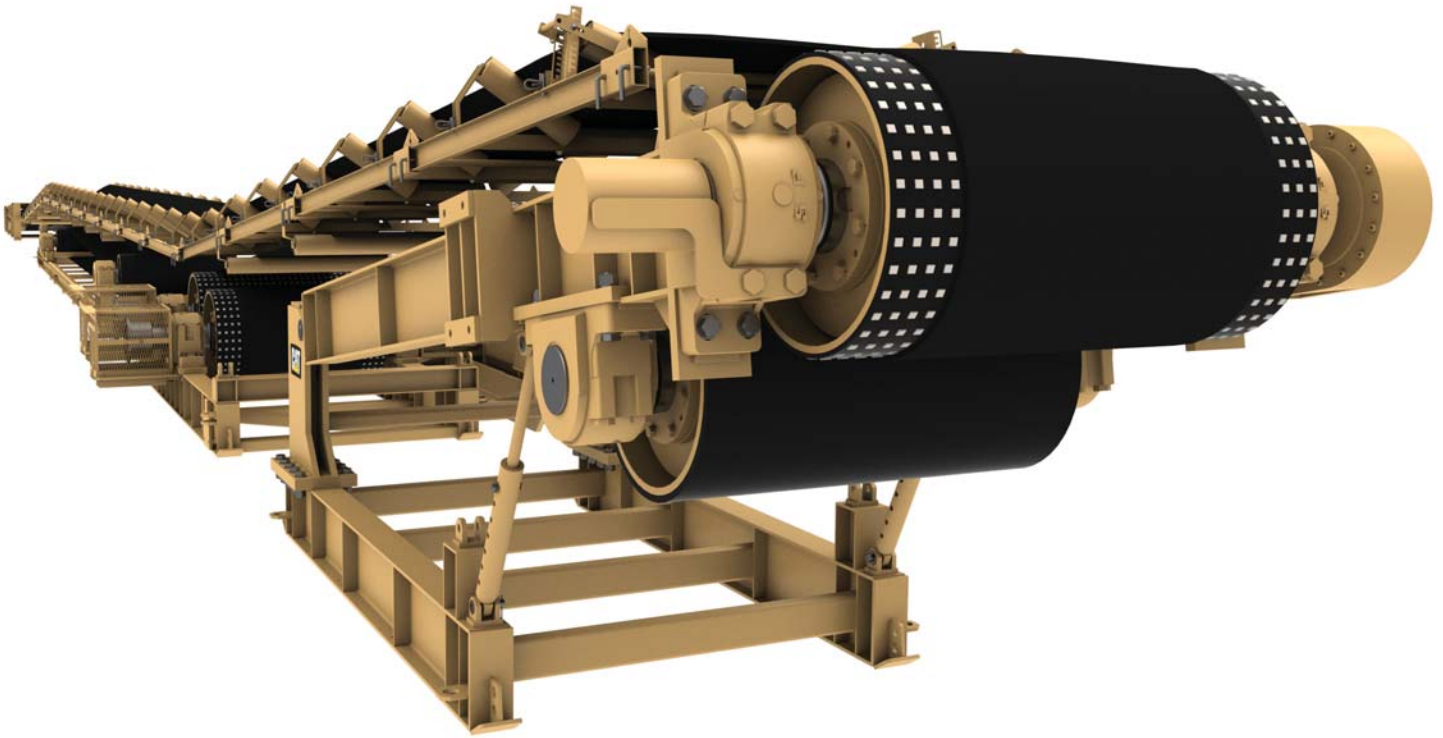


Contents

T-Bottom and Turbo-Disc Designs	4
Two Standard Designs: T-Bottom and Turbo-Disc	4
Surface and Underground.....	5
Specifications.....	5
Notes.....	6

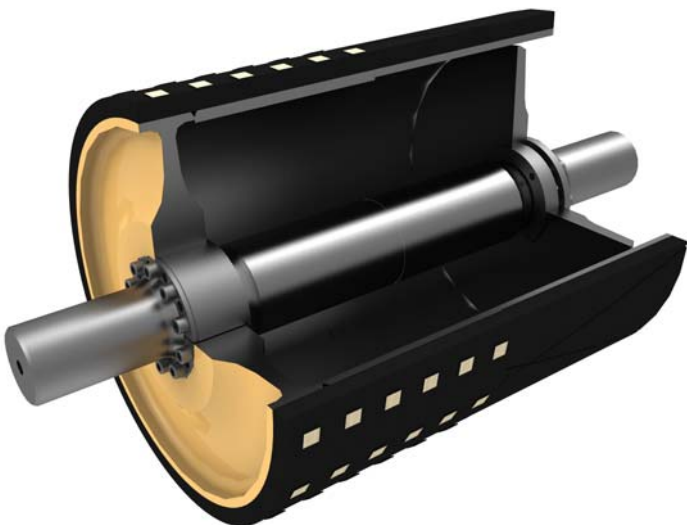


Cat® pulleys are engineered and machined to provide fewer areas of failure and maximum stability. These pulleys have proven their legendary strength and reliability under some of the most severe conditions imaginable. They perform reliably, driving conveyors with installed power in excess of 3728 kW (5,000 hp).



T-Bottom and Turbo-Disc Designs

Strength and reliability to handle your most severe conditions



Two Standard Designs: T-Bottom and Turbo-Disc

For conveyor pulleys, the area most prone to failure is the end-disc, especially where circumferential welds are located.

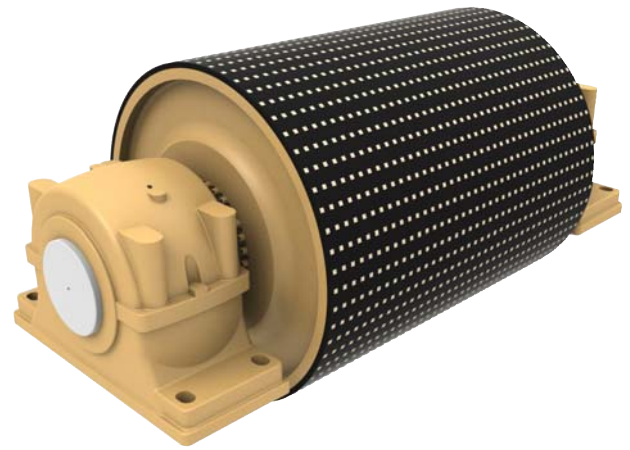
- By machining the end-disc from solid steel plate and making the hub integral to the end-disc, high stress-concentration welds are minimized.
- In both designs, the end-discs are shaped to ensure optimum distribution of stresses throughout the end-disc and the pulley.
- T-Bottom for T1 Tensions > 53.4 kN (12,000 lbf)
- Turbo-Disc for T1 Tensions < 53.4 kN (12,000 lbf)

Surface and Underground

Strength and reliability to handle your most severe conditions.

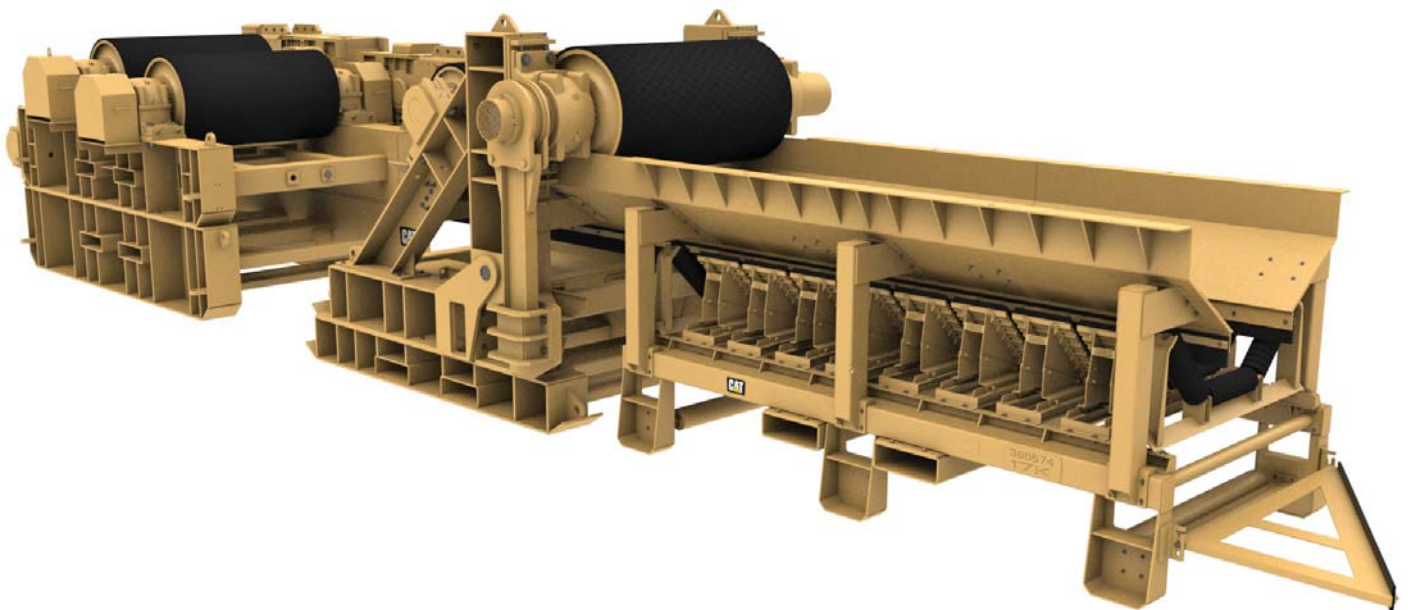
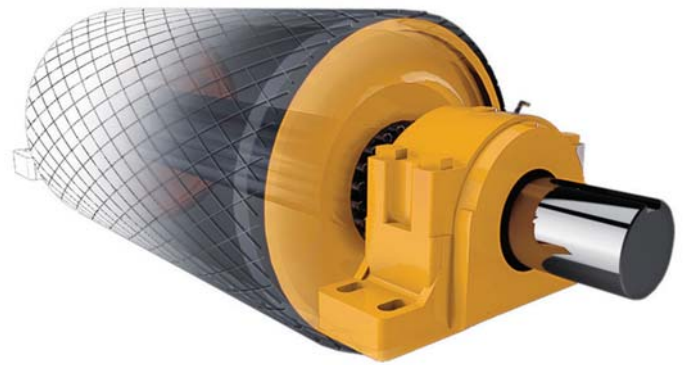
Ideal for use in both surface and underground mining applications, Cat Pulleys are designed for high reliability and long life.

- Machined end-discs require fewer welds to provide fewer areas for failure.
- Utilization of keyless locking elements in conjunction with T-Bottom or Turbo-Disc Designs removes 'Bellows Stress' from each pulley end disc at the shaft.



Specifications

- Surface and Underground Applications
- Designed for each customer's Tension Requirements
- T-Bottom and Turbo-Disc Designs
- Diameters to 1800 mm (72 in)
- Belt Widths to 2400 mm (96 in)
- Installed power to 3728 kW (5,000 hp)
- Rubber Lagging (Plain or Diamond Grooved)
- Ceramic Lagging
- Spiral Lagging
- Mounted Bearings
- Bearings sized for 100,000 hours L10 Life
- Balanced to ISO 1940-1 Q40



For more complete information on Cat products, dealer services, and industry solutions, visit us on the web at www.cat.com

AEHQ6938 (03-2014)

© 2014 Caterpillar
All rights reserved

Materials and specifications are subject to change without notice. Featured machines in photos may include additional equipment. See your Cat dealer for available options.

CAT, CATERPILLAR, SAFETY.CAT.COM, their respective logos, "Caterpillar Yellow" and the "Power Edge" trade dress, as well as corporate and product identity used herein, are trademarks of Caterpillar and may not be used without permission.

