

963D

Track Loader

Joint Services



Cat® C6.6 ACERT™ Engine

| | | |
|----------------|--------|--------|
| Flywheel Power | 141 kW | 189 hp |
|----------------|--------|--------|

Bucket

| | | |
|-----------------------------|--------------------|----------------------|
| Capacity – Multi-Purpose | 1.9 m ³ | 2.48 yd ³ |
|-----------------------------|--------------------|----------------------|

Weight

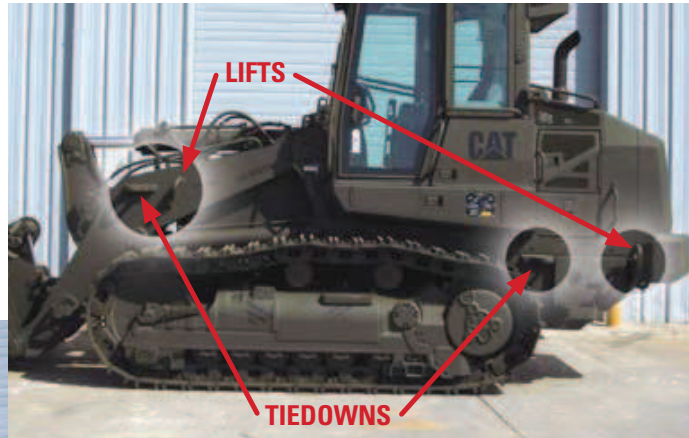
| | | |
|------------------|-----------|-----------|
| Operating Weight | 20 220 kg | 44,577 lb |
|------------------|-----------|-----------|

MISSION CAPABLE

The Cat® 963D Track Loader – Tested, Proven, and Reliable – Mission Capable

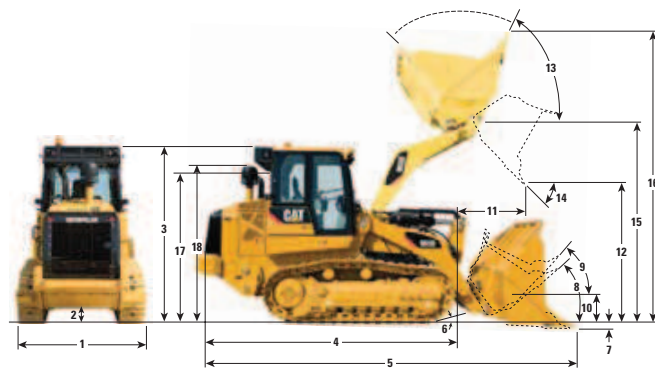
The **Cat 963D Track Loader** provides superior operational readiness for the construction of airfields, roads, landing zones, defensive berms, anti-tank ditches, and other key military construction zones.

The 963D is also designed with transportability in mind, incorporating MIL-STD-209K lift and tiedown provisions. The machine can be transported via C5 or C17 aircraft.



Hydrostatic Drive. The closed loop hydrostatic drive system with electronic control provides precise modulation for quick, smooth operation and superior maneuverability. Shorter cycle times, high efficiency, and excellent maneuverability result in increased productivity.

Machine Dimensions



Electro-Hydraulic Implement Controls. Electro-Hydraulic Controls (EHC) on the 963D provide the operator with responsive, smooth and precise control of bucket and lift arms. The use of EHC allows the operator to set machine operation through the on-board Messenger display, such as loader or bucket speed.

Multi-Purpose Bucket. The Multi-Purpose Bucket combines the performance of a standard bucket, dozer blade and clamp. The bucket provides maximum versatility combined with strength to handle a broad range of applications, such as loading, stripping topsoil, clearing, bulldozing, picking up debris and grading.

Structure. The D-series Main Frame and Loader Tower provide durability, resistance to twisting, and a solid base for all components. The Z-bar linkage offers high breakout force and fast dump speed for enhanced productivity.

| | | |
|----|---|--------------------|
| 1 | Overall machine width without bucket: | |
| | with standard tracks – 550 mm (21.6 in) shoes | 2280 mm (89.7 in) |
| | with narrow tracks – 450 mm (17.7 in) shoes | 2180 mm (85.8 in) |
| 2 | Ground clearance | 471 mm (18.5 in) |
| 3 | Machine height to top of cab | 3335 mm (131.3 in) |
| 4 | Length to front of track | 4749 mm (187 in) |
| 5 | Overall machine length | 6941 mm (273.3 in) |
| 6 | Carry position approach angle | 15° |
| 7 | Digging depth | 138 mm (5.4 in) |
| 8 | Maximum rollback at ground | 43° |
| 9 | Maximum rollback at carry position | 50° |
| 10 | Bucket height in carry position | 457 mm (18 in) |
| 11 | Reach at full lift height and 45° dump | 1373 mm (54 in) |
| 12 | Clearance at full lift height and 45° dump | 2915 mm (114.8 in) |
| 13 | Maximum rollback, fully raised | 52° |
| 14 | Maximum dump, fully raised | 53° |
| | Grading angle | 63° |
| 15 | Height to bucket hinge pin | 3940 mm (155.1 in) |
| 16 | Overall machine height, bucket fully raised | 5402 mm (212.7 in) |
| 17 | Height to top of seat with headrest | 2790 mm (109.8 in) |
| 18 | Height to top of stack | 2953 mm (116.3 in) |

Worldwide Locations. The Caterpillar global network of authorized dealers supports the U.S. Military in every corner of the globe. With heavy construction equipment dealers located in over 200 countries, Caterpillar's support organization provides global coverage.



Service Capabilities. Cat field service technicians have the experience and tools necessary to service your equipment on-site. Field service trucks are fully loaded with state-of-the-art tools and diagnostic equipment as well as specifications and schematics for every Cat machine. Technical experts at the Dealership and at Caterpillar are available to provide assistance to field service technicians when needed. When on-site repair isn't enough, Cat Dealerships are fully-equipped to service your equipment quickly.

Dealer Support. The Caterpillar global network of authorized dealers is the best in the world at providing support to keep your equipment up and running. With 99.7% of parts shipped within 24 hrs, Cat Dealers are supporting the 963D Track Loader.

Engine

| | | |
|-------------------------|------------------|---------------------|
| Engine Model | Cat® C6.6 ACERT™ | |
| Flywheel Power | 41 kW | 189 hp |
| Net Power - Caterpillar | 141 kW | 189 hp |
| Net Power - ISO 9249 | 141 kW | 189 hp |
| Net Power - SAE J1349 | 141 kW | 189 hp |
| Net Power - EEC 80/1269 | 141 kW | 189 hp |
| Bore | 105 mm | 4.13 in |
| Stroke | 127 mm | 5 in |
| Displacement | 6.6 L | 403 in ³ |

Weights

| | | |
|------------------|-----------|-----------|
| Operating Weight | 20 220 kg | 44,577 lb |
|------------------|-----------|-----------|

Buckets

| | | |
|------------------------------|--------------------|----------------------|
| Capacity – Multi-Purpose | 1.9 m ³ | 2.48 yd ³ |
| Bucket Width – Multi-Purpose | 2575 mm | 101.3 in |

Service Refill Capacities

| | | |
|-------------------------|--------|-----------|
| Fuel Tank | 400 L | 105.6 gal |
| Cooling System | 31.5 L | 8.3 gal |
| Crankcase (with Filter) | 16.5 L | 4.4 gal |
| Final Drives (each) | 15 L | 4 gal |
| Hydraulic Tank | 90 L | 23.7 gal |
| Pivot Shaft | 1.8 L | 0.5 gal |

Bucket Cycle Times

| | |
|---|-----|
| Lift – Seconds | 5.7 |
| Power Down – Seconds | 3.7 |
| Float Down – Seconds | 2.0 |
| Dump at Max Height from full rackback – Seconds | 1.3 |
| Rackback at Max Height from full dump – Seconds | 1.5 |



Remanufactured Parts. Cat engines and major components are designed to be remanufactured and provide multiple life cycles. Components are remanufactured in the factory to original specifications with necessary product updates.

MILITARY MODIFICATIONS

- MIL-STD-209K Lift and Tiedown Provisions
- NATO Start Receptacle
- Rifle Bracket
- C5/C17 Air Transportable
- External Military Paint
- Military Data Plates
- Keyless Engine Start Switch

STANDARD EQUIPMENT

Standard equipment may vary. Consult Caterpillar Defense & Federal Products for details.

Electrical

Alternator, 24 volt, heavy duty brushless
Alarm, backup
Horn, electric
2 heavy duty batteries, high output maintenance-free, 1120 CCA
Switch, main disconnect
Starter, electric (heavy duty, 24 volt)
Four halogen lights, two forward facing, roof mounted; two rearward facing, integrated in A/C unit
Diagnostic connector

Operator Environment

Pressurized, sound suppressed, ROPS/FOPS cab
Cab, windows, glued
Cat Messenger
Side sliding windows
Air conditioning and heater/defroster with temperature control
Seat, fabric-covered, air suspended, adjustable, with side-to-side isolator
Seat belt, retractable
Electro-Hydraulic Seat mounted control levers
Control, joystick, bucket GP
Electronic Monitoring System with gauges for:
- Engine coolant temperature
- Hydraulic oil temperature
- Engine oil pressure
- Fuel level
Mirror, rearview, inside
Radio-ready. Includes 24 to 12 volt converter, speakers, antenna and 12 volt power outlet
12 Volt outlets (2)
Coat hook

Storage compartments under left armrest
Document holder on right console
Floor mat, rubber, heavy duty
Windshield washers and wipers, front and rear
Metal roof
Parking brake switch and "brake-on" indicator light

Powertrain

Cat C6.6 ACERT™ diesel engine, turbocharged with ATAAC
Modular cooling system for engine air intake, oil and water
Fan, radiator, electronically controlled, hydraulically driven, temperature sensing, on demand
Electro-Hydrostatic Control (EHC) for transmission with travel and work modes
Fuel priming pump, electric
Water separator
Air cleaner, dry-type, axial seal with integral pre-cleaner and dust ejection system, electronic service indicator
Muffler, under automatic hood
Starting aid ether injection
Cat Extended Life Coolant

Undercarriage

Cat SystemOne™ track (38 sec.) 1850 mm (72.8 in) track gauge
Final drive, standard
Track, 550 mm (21.6 in), double grouser
Track adjuster, hydraulic
Sprocket rims, with replaceable bolt-on segments
Document holder on right console

7 single flange track rollers per side, with two upper carrier rollers, lifetime lubricated
Idler scrapers
Oscillating track roller frames

Hydraulic

Oil change, standard
Hydraulic oil
Hydraulics, 2 valve

Other

Guard, front
Guard, rear
Guards, full bottom
Cab, tilt, locking bar
Sound Suppression, exterior
Z-bar loader linkage
Cat Product Link 321 (for selected territories)
Load sensing variable displacement implement pump
Implement cylinders with integrated positioning sensors
Operator programmable lift and tilt kickouts
Engine enclosure with lockable doors
Radiator core 6.5 fpi, debris resistant
Hinged Radiator Guard and swing out fan
Ecology drain on hydraulic tank
Product Link ready
Oil sampling valves
Hydraulic hoses, Caterpillar XT
Hydraulic Oil, HYDO Advanced 10

For more information visit: www.catdftp.com

All dimensions are approximate. Dimensions may vary with configuration. Specific military service configurations are available upon request.

© 2010 Caterpillar | All Rights Reserved | Printed in the USA

Materials and specifications are subject to change without notice. Featured machines may include additional equipment. See your account manager for available options.

CAT, CATERPILLAR, their respective logos, "Caterpillar Yellow" and the Power Edge trade dress, as well as corporate and product identity used herein, are trademarks of Caterpillar and may not be used without permission.

