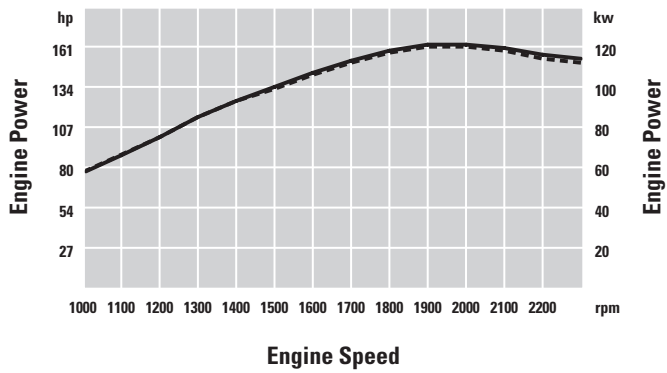
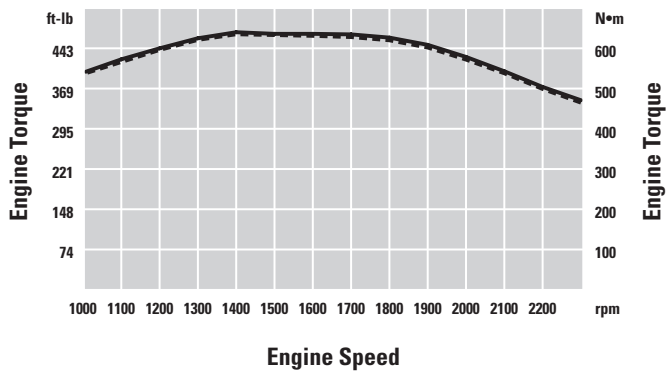


930G Wheel Loader

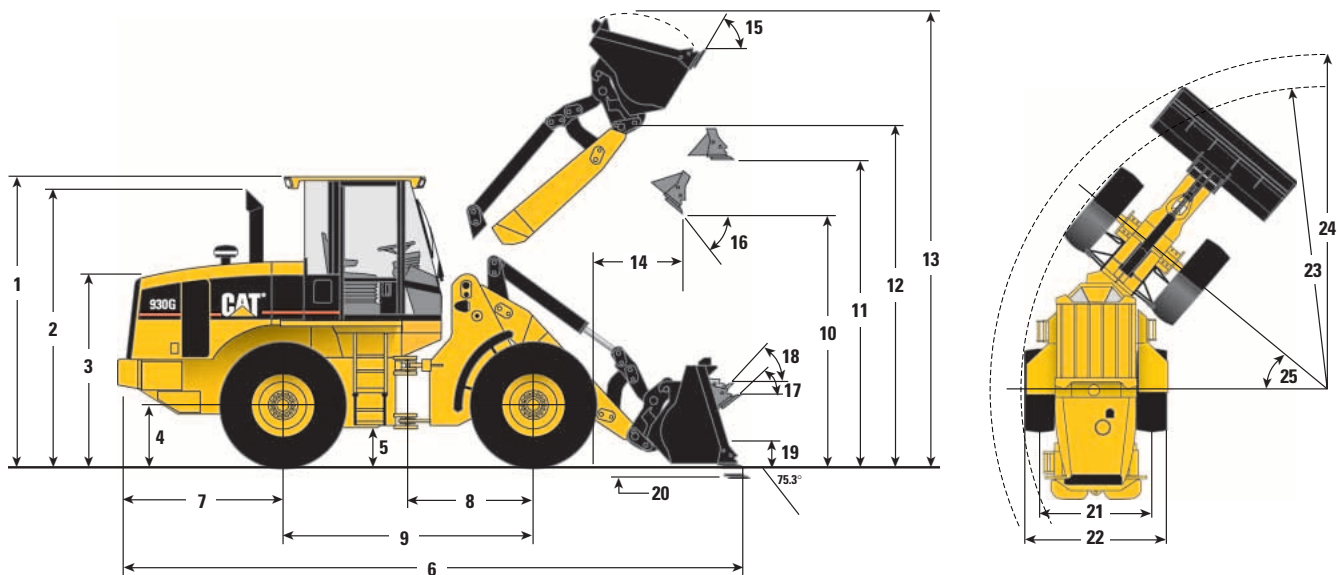
----- Net
——— Gross



930G Wheel Loader

Dimensions with Bucket

All dimensions are approximate. Dimensions may vary with bucket. Refer to Operating Specifications.



	Standard VersaLink		High Lift VersaLink	
1	Height to top of ROPS/FOPS	3288 mm (10 ft 9 in)	3288 mm (10 ft 9 in)	3288 mm (10 ft 9 in)
2	Height to top of exhaust stack	3215 mm (10 ft 6 in)	3215 mm (10 ft 6 in)	3215 mm (10 ft 6 in)
3	Height to top of hood	2244 mm (7 ft 4 in)	2244 mm (7 ft 4 in)	2244 mm (7 ft 4 in)
4	Height to center of axle	695 mm (2 ft 3 in)	695 mm (2 ft 3 in)	695 mm (2 ft 3 in)
5	Ground clearance	421 mm (1 ft 4 in)	421 mm (1 ft 4 in)	421 mm (1 ft 4 in)
6	Overall length	7390 mm (24 ft 3 in)	7877 mm (25 ft 10 in)	7877 mm (25 ft 10 in)
7	Length – rear axle to bumper	1816 mm (5 ft 11 in)	1816 mm (5 ft 11 in)	1816 mm (5 ft 11 in)
8	Center line of front axle to hitch	1450 mm (4 ft 9 in)	1450 mm (4 ft 9 in)	1450 mm (4 ft 9 in)
9	Wheel base length	2900 mm (9 ft 6 in)	2900 mm (9 ft 6 in)	2900 mm (9 ft 6 in)
10	Dump clearance at maximum lift and 45° dump	2936 mm (9 ft 8 in)	3436 mm (11 ft 3 in)	3436 mm (11 ft 3 in)
11	Bucket clearance at maximum lift and level	3726 mm (12 ft 3 in)	4226 mm (13 ft 10 in)	4226 mm (13 ft 10 in)
12	Bucket pin height at maximum lift	4069 mm (13 ft 4 in)	4559 mm (14 ft 11 in)	4559 mm (14 ft 11 in)
13	Overall height – bucket raised	5344 mm (17 ft 6 in)	5835 mm (19 ft 2 in)	5835 mm (19 ft 2 in)
14	Reach at maximum lift and 45° dump	1073 mm (3 ft 6 in)	1073 mm (3 ft 6 in)	1073 mm (3 ft 6 in)
15	Rack back angle at maximum lift	60°	62°	62°
16	Dump angle at maximum lift	45°	45°	45°
17	Rack back angle at ground	51°	52°	52°
18	Rack back angle at carry	53°	57°	57°
19	Carry height	428 mm (1 ft 4 in)	577 mm (1 ft 10 in)	577 mm (1 ft 10 in)
20	Digging depth	142 mm (5.6 in)	157 mm (6.2 in)	157 mm (6.2 in)

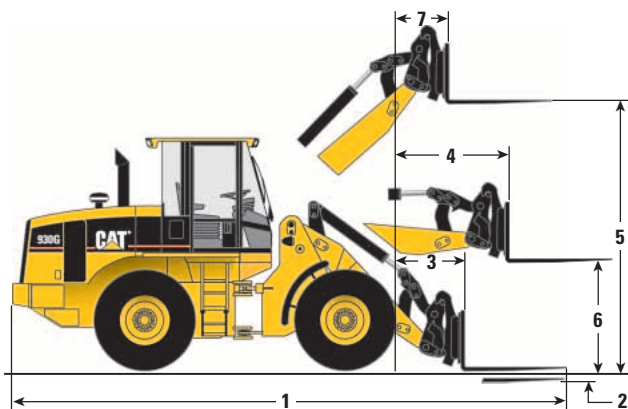
Dimensions listed are for 930G with 2.1 m³ (2.7 yd³) bucket with bolt-on cutting edge, cab with A/C, optional counterweight, limited slip axles, heavy duty rear brakes, additional guarding, sound suppression, 80 kg (176 lb) operator and 600/65 R25 GP-3D tires.

	17.5-25 12PR L-2 Tires		20.5-25 12PR (L-2) Tires		600/65 R25 (L-2) Tires	
21	Width at tread center	1950 mm (6 ft 5 in)	1950 mm (6 ft 5 in)	1950 mm (6 ft 5 in)	1950 mm (6 ft 5 in)	1950 mm (6 ft 5 in)
22	Overall width over tires	2407 mm (7 ft 11 in)	2504 mm (8 ft 3 in)	2544 mm (8 ft 4 in)	2544 mm (8 ft 4 in)	2544 mm (8 ft 4 in)
23	Minimum turning radius over tires	5186 mm (17 ft 0 in)	5236 mm (17 ft 2 in)	5256 mm (17 ft 3 in)	5256 mm (17 ft 3 in)	5256 mm (17 ft 3 in)
24	Minimum turning radius over bucket	5811 mm (19 ft 1 in)	5811 mm (19 ft 1 in)	5811 mm (19 ft 1 in)	5811 mm (19 ft 1 in)	5811 mm (19 ft 1 in)
25	Steering angle – left/right	40°	40°	40°	40°	40°
	Change in vertical dimension	-54 mm (-2.1 in)	+11 mm (+0.4 in)	no change	no change	no change

930G Wheel Loader

Dimensions with Pallet Forks

All dimensions are approximate. Dimensions vary with fork length. Refer to Operating Specifications chart below.



Standard VersaLink

	Fork Tine Length			
	1200 mm (4 ft 0 in)	1350 mm (4 ft 3 in)	1524 mm (5 ft 0 in)	
1	7653 mm (25 ft 1 in)	7814 mm (25 ft 8 in)	7977 mm (26 ft 3 in)	
2	-32 mm (-1.3 in)	-46 mm (-1.8 in)	-32 mm (-1.3 in)	
3	987 mm (3 ft 3 in)	998 mm (3 ft 3 in)	987 mm (3 ft 3 in)	
4	1695 mm (5 ft 7 in)	1705 mm (5 ft 7 in)	1695 mm (5 ft 7 in)	
5	3899 mm (12 ft 10 in)	3913 mm (12 ft 10 in)	3899 mm (12 ft 10 in)	
6	1871 mm (6 ft 2 in)	1885 mm (6 ft 2 in)	1871 mm (6 ft 2 in)	
7	774 mm (2 ft 6 in)	784 mm (2 ft 7 in)	774 mm (2 ft 6 in)	

High Lift VersaLink

1	8161 mm (26 ft 9 in)	8321 mm (27 ft 4 in)	8485 mm (27 ft 11 in)	
2	-17 mm (-0.7 in)	-31 mm (-1.2 in)	-17 mm (-0.7 in)	
3	1495 mm (4 ft 11 in)	1506 mm (5 ft 0 in)	1495 mm (5 ft 0 in)	
4	2088 mm (6 ft 10 in)	2098 mm (6 ft 11 in)	2088 mm (6 ft 10 in)	
5	4399 mm (14 ft 5 in)	4413 mm (14 ft 6 in)	4399 mm (14 ft 5 in)	
6	1871 mm (6 ft 2 in)	1885 mm (6 ft 2 in)	1871 mm (6 ft 2 in)	
7	774 mm (2 ft 6 in)	784 mm (2 ft 7 in)	774 mm (2 ft 6 in)	

Operating Specifications with Pallet Forks

Standard VersaLink	Fork Tine Length			
	1200 mm (4 ft 0 in)	1350 mm (4 ft 3 in)	1524 mm (5 ft 0 in)	
Operating Load:				
Per SAE J1197 FEB91 (50% of FTSTL)	3208 kg (7072 lb)	3042 kg (6705 lb)	2946 kg (6494 lb)	
Per EN 474-3, rough terrain (60% of FTSTL)	3850 kg (8487 lb)	3650 kg (8046 lb)	3535 kg (7792 lb)	
Per EN 474-3, firm & level ground (80% of FTSTL)	5133 kg (11,316 lb)	4866 kg (10,729 lb)	4713 kg (10,390 lb)	
Load Center	600 mm (23.6 in)	675 mm (26.6 in)	762 mm (30 in)	
Static tipping load with level arms and forks, straight*	7334 kg (16,169 lb)	6962 kg (15,349 lb)	6746 kg (14,872 lb)	
Static tipping load with level arms and forks, full 40° turn*	6416 kg (14,145 lb)	6083 kg (13,411 lb)	5891 kg (12,987 lb)	
Operating Weight*	12 596 kg (27,770 lb)	12 664 kg (27,919 lb)	12 686 kg (27,968 lb)	

High Lift VersaLink

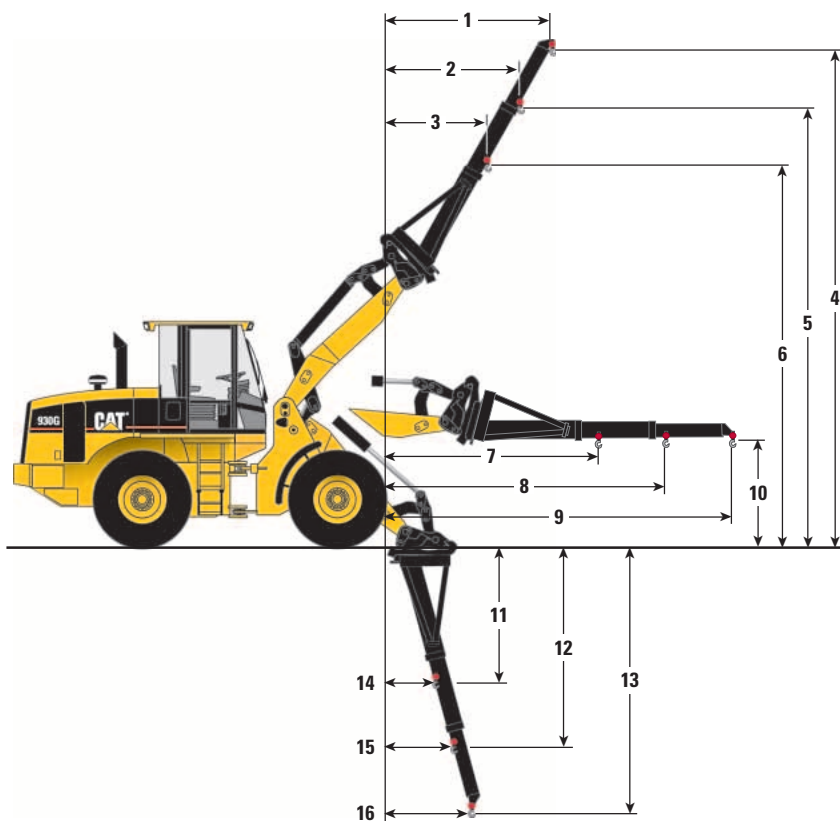
Operating Load:				
Per SAE J1197 FEB91 (50% of FTSTL)	2761 kg (6087 lb)	2627 kg (5790 lb)	2550 kg (5621 lb)	
Per EN 474-3, rough terrain (60% of FTSTL)	3313 kg (7304 lb)	3152 kg (6949 lb)	3059 kg (6745 lb)	
Per EN 474-3, firm & level ground (80% of FTSTL)	4418 kg (9739 lb)	4202 kg (9265 lb)	4079 kg (8993 lb)	
Load Center	600 mm (23.6 in)	675 mm (26.6 in)	762 mm (30 in)	
Static tipping load with level arms and forks, straight*	6335 kg (13,966 lb)	6035 kg (13,305 lb)	5862 kg (12,924 lb)	
Static tipping load with level arms and forks, full 40° turn*	5522 kg (12,174 lb)	5253 kg (11,581 lb)	5099 kg (11,241 lb)	
Operating Weight*	12 741 kg (28,089 lb)	12 809 kg (28,239 lb)	12 831 kg (28,288 lb)	

* Static tipping and operating weights shown are for 930G with cab with A/C, optional counterweight, limited slip axles, heavy duty rear brakes, additional guarding, sound suppression, work tool, 80 kg (176 lb) operator and 600/65 R25 GP-3D tires. Tipping load is defined by SAE J732 JUN92.

930G Wheel Loader

Dimensions with Material Handling Arm

All dimensions are approximate.



	Standard VersaLink	High Lift VersaLink
1	2217 mm (7 ft 0 in)	2107 mm (6 ft 11 in)
2	1778 mm (5 ft 10 in)	1696 mm (5 ft 7 in)
3	1341 mm (4 ft 5 in)	1285 mm (4 ft 3 in)
4	7746 mm (25 ft 5 in)	8303 mm (27 ft 3 in)
5	6847 mm (22 ft 6 in)	7391 mm (24 ft 3 in)
6	5949 mm (19 ft 6 in)	6480 mm (21 ft 3 in)
7	3354 mm (11 ft 0 in)	3748 mm (12 ft 4 in)
8	4353 mm (14 ft 3 in)	4747 mm (15 ft 7 in)
9	5353 mm (17 ft 7 in)	5747 mm (18 ft 10 in)
10	1886 mm (6 ft 2 in)	1886 mm (6 ft 2 in)
11	1877 mm (6 ft 2 in)	1803 mm (6 ft 0 in)
12	2803 mm (9 ft 2 in)	2681 mm (8 ft 10 in)
13	3730 mm (12 ft 3 in)	3560 mm (11 ft 8 in)
14	1137 mm (3 ft 9 in)	1866 mm (6 ft 1 in)
15	1512 mm (5 ft 0 in)	2343 mm (8 ft 0 in)
16	1886 mm (6 ft 2 in)	2820 mm (9 ft 3 in)

Operating Specifications with Material Handling Arm

Standard VersaLink	Retracted	Mid-Position	Extended
Operating load	2363 kg (5210 lb)	1890 kg (4166 lb)	1576 kg (3473 lb)
Static tipping load, straight	5407 kg (11,920 lb)	4327 kg (9539 lb)	3609 kg (7957 lb)
Static tipping load, full turn	4726 kg (10,419 lb)	3779 kg (8331 lb)	3151 kg (6947 lb)
Operating weight	12 562 kg (27,695 lb)	12 562 kg (27,695 lb)	12 562 kg (27,695 lb)

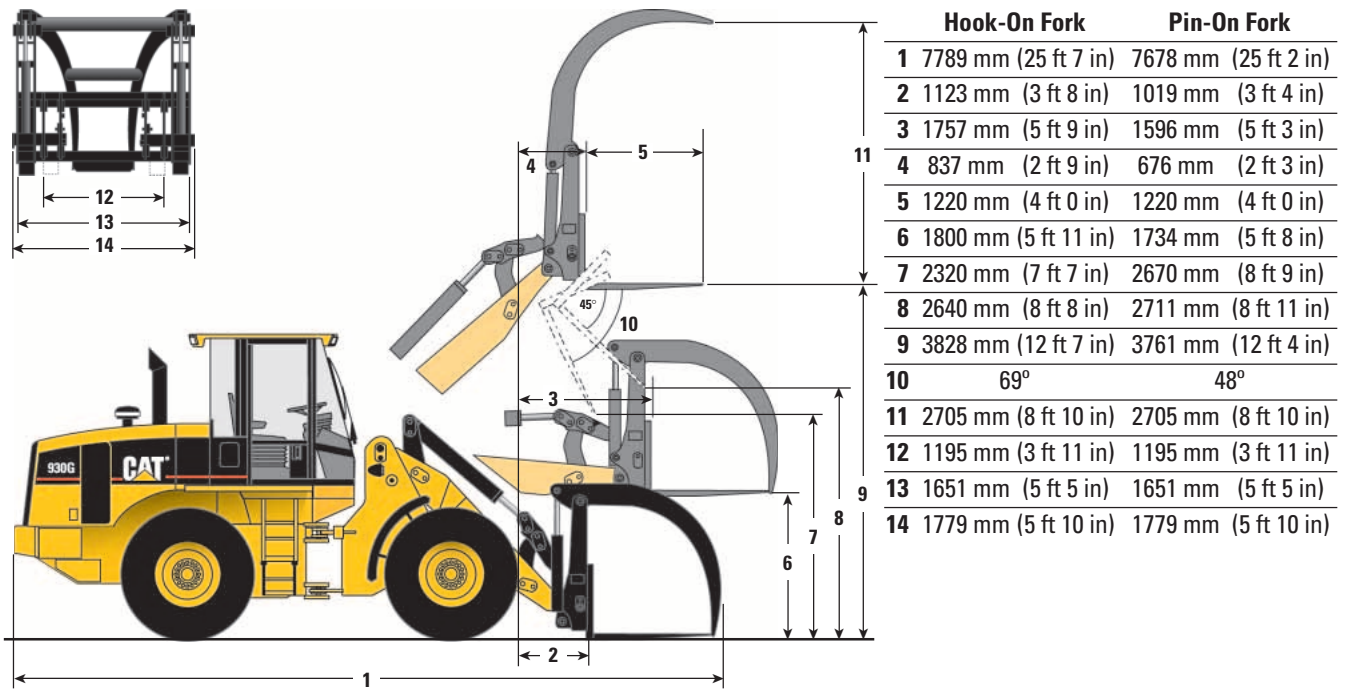
High Lift VersaLink

Operating load	2097 kg (4622 lb)	1705 kg (3759 lb)	1439 kg (3171 lb)
Static tipping load, straight	4814 kg (10,613 lb)	3919 kg (8640 lb)	3308 kg (7293 lb)
Static tipping load, full turn	4193 kg (9244 lb)	3410 kg (7518 lb)	2877 kg (6343 lb)
Operating weight	12 707 kg (28,014 lb)	12 707 kg (28,014 lb)	12 707 kg (28,014 lb)

930G Wheel Loader

Dimensions with Standard VersaLink and Millyard Forks

All dimensions are approximate. Dimensions vary with fork length. Refer to Operating Specifications chart below.



Operating Specifications with Standard VersaLink and Millyard Forks


Fork Type	Hook-On Fork		Pin-On Fork	
Operating load:				
Per SAE J1197 FEB91 (50% of FTSTL)	2857 kg	(6299 lb)	3068 kg	(6763 lb)
Per EN 474-3, log handling, rough terrain (75% of FTSTL)	4286 kg	(9448 lb)	4601 kg	(10,144 lb)
Per EN 474-3, log handling, firm & level ground (85% of FTSTL)	4857 kg	(10,708 lb)	5215 kg	(11,497 lb)
Load center	616 mm	(24.3 in)	592 mm	(23.3 in)
Static tipping load with level arms and forks, straight*	6617 kg	(14,588 lb)	7083 kg	(15,615 lb)
Static tipping load with level arms and forks, full 40° turn*	5714 kg	(12,597 lb)	6135 kg	(13,525 lb)
Operating weight*	13 305 kg	(29,333 lb)	13 193 kg	(29,086 lb)

* Static tipping and operating weights shown are for 930G with cab with A/C, optional counterweight, limited slip axles, heavy duty rear brakes, additional guarding, sound suppression, work tool, 80 kg (176 lb) operator and 600/65 R25 GP-3D tires.

930G Wheel Loader

Standard VersaLink

Operating Specifications with Bucket

	Hook-on Buckets using Quick Coupler		General Purpose								
			Bolt-On Cutting Edge			Bolt-On Teeth & Segments			Bolt-On Teeth		
Rated bucket capacity (§)	m ³ yd ³		2.1 2.7	2.3 3.0	2.5 3.2	2.1 2.7	2.3 3.0	2.5 3.2	1.9 2.4	2.1 2.7	2.3 3.0
Struck capacity (§)	m ³ yd ³		1.7 2.2	1.9 2.5	2.1 2.7	1.7 2.2	1.9 2.5	2.1 2.7	1.6 2.1	1.8 2.4	2.0 2.6
Bucket width	mm ft/in		2550 8'4"	2550 8'4"	2550 8'4"	2585 8'6"	2585 8'6"	2585 8'6"	2585 8'6"	2585 8'6"	2585 8'6"
10 Dump clearance at full lift and 45° discharge (§)	mm ft/in		2843 9'4"	2783 9'2"	2737 9'0"	2731 9'0"	2670 8'9"	2624 8'7"	2731 9'0"	2670 8'9"	2624 8'7"
14 Reach at full lift and 45° discharge (§)	mm ft/in		936 3'1"	997 3'3"	1042 3'5"	1030 3'5"	1091 3'7"	1137 3'9"	1030 3'5"	1091 3'7"	1137 3'9"
Reach at 45° discharge and 2130 mm (7'0") clearance (§)	mm ft/in		1514 5'0"	1539 5'1"	1557 5'1"	1541 5'1"	1563 5'2"	1578 5'2"	1541 5'1"	1563 5'2"	1578 5'2"
Reach with lift arms horizontal and bucket level	mm ft/in		2518 8'3"	2603 8'6"	2668 8'9"	2664 8'9"	2749 9'0"	2814 9'3"	2664 8'9"	2749 9'0"	2814 9'3"
20 Digging depth (§)	mm in		191 7.5"	191 7.5"	191 7.5"	204 8"	204 8"	204 8"	204 8"	204 8"	204 8"
6 Overall length	mm ft/in		7422 24'4"	7507 24'8"	7572 24'10"	7568 24'10"	7653 25'1"	7718 25'4"	7548 24'9"	7633 25'1"	7698 25'3"
13 Overall height with bucket at full raise (§)	mm ft/in		5307 17'5"	5386 17'8"	5420 17'9"	5307 17'5"	5386 17'8"	5420 17'9"	5307 17'5"	5386 17'8"	5420 17'9"
24 Loader clearance radius with bucket in carry position (§)	mm ft/in		11 652 38'3"	11 695 38'4"	11 729 38'6"	11 768 38'7"	11 813 38'9"	11 849 38'10"	11 768 38'7"	11 813 38'9"	11 849 38'10"
Static tipping load straight (§)	kg lb		9228 20,344	9109 20,082	9022 19,890	9063 19,981	8943 19,716	8854 19,520	9168 20,212	9048 19,948	8961 19,756
Static tipping load full 40° turn (§)	kg lb		8015 17,670	7904 17,425	7822 17,245	7851 17,309	7738 17,059	7655 16,876	7955 17,538	7843 17,291	7761 17,110
Breakout force (§)	kg lb		13 822 30,472	12 867 28,367	12 218 26,936	13 687 30,175	12 732 28,069	12 083 26,639	14 595 32,177	13 529 29,826	12 809 28,239
Operating weight	kg lb		13 130 28,947	13 190 29,079	13 231 29,170	13 266 29,247	13 326 29,379	13 367 29,469	13 180 29,057	13 240 29,189	13 281 29,280

Static tipping and operating weights shown are for 930G with cab with A/C, optional counterweight, limited slip axles, heavy duty rear brakes, additional guarding, sound suppression, work tool, 80 kg (176 lb) operator and 600/65 R25 GP-3D tires.

* Dimensions are measured to the tip of the bucket teeth to provide accurate clearance data. SAE standards specify the cutting edge.

(§) Specifications and ratings conform to all applicable standards recommended by the Society of Automotive Engineers (SAE), including SAE Standards J732 JUN92 and J742 FEB85 governing ratings.


930G Wheel Loader

High Density						Light Material		Ejector	Woodchip
Bolt-On Cutting Edge		Bolt-On Teeth and Segments		Bolt-On Teeth		Bolt-On Cutting Edge		Bolt-On Cutting Edge	Bolt-On Cutting Edge
2.1 2.7	2.3 3.0	2.1 2.7	2.3 3.0	2.0 2.6	2.1 2.7	2.8 3.6	3.1 4.0	3.1 4.0	5.0 6.5
1.7 2.2	1.9 2.5	1.7 2.2	1.9 2.5	1.6 2.1	1.8 2.4	2.3 3.0	2.6 3.4	2.6 3.4	4.1 5.3
2550 8'4"	2550 8'4"	2585 8'6"	2585 8'6"	2585 8'6"	2585 8'6"	2550 8'4"	2550 8'4"	2550 8'4"	3392 11'2"
2936 9'8"	2902 9'6"	2832 9'3"	2798 9'2"	2832 9'3"	2798 9'2"	2800 9'2"	2756 9'1"	2738 9'0"	2671 8'9"
1073 3'6"	1114 3'8"	1176 3'10"	1218 4'0"	1176 3'10"	1218 4'0"	1210 4'0"	1252 4'1"	980 3'3"	1189 3'11"
1700 5'7"	1723 5'8"	1747 5'9"	1769 5'10"	1747 5'9"	1769 5'10"	1763 5'9"	1778 5'10"	1496 4'11"	1661 5'5"
2526 8'3"	2578 8'5"	2672 8'9"	2724 8'11"	2672 8'9"	2724 8'11"	2718 8'11"	2778 9'1"	2623 8'7"	2818 9'3"
142 5.6"	147 5.8"	155 6.1"	160 6.3"	155 6.1"	160 6.3"	159 6.3"	166 6.5"	234 9.2"	134 5.3"
7390 24'3"	7447 24'5"	7536 24'9"	7593 24'11"	7516 24'8"	7573 24'10"	7597 24'11"	7662 25'2"	7559 24'10"	7677 25'2"
5344 17'6"	5351 17'7"	5344 17'6"	5351 17'7"	5344 17'6"	5351 17'7"	5479 18'0"	5538 18'2"	5751 18'10"	5770 18'11"
11 621 38'2"	11 652 38'3"	11 738 38'6"	11 769 38'7"	11 738 38'6"	11 769 38'7"	11 734 38'6"	11 770 38'7"	11 707 38'5"	12 525 41'1"
9588 21,138	9495 20,933	9422 20,772	9327 20,563	9528 21,006	9433 20,796	9340 20,591	9267 20,430	9103 20,069	9084 20,027
8344 18,395	8256 18,201	8178 18,029	8089 17,833	8284 18,263	8195 18,067	8206 18,091	8030 17,703	7877 17,366	7844 17,293
13 753 30,320	13 148 28,987	13 618 30,023	13 014 28,691	14 507 31,983	13 838 30,508	11 804 26,024	11 281 24,870	12 548 27,664	10 654 23,488
13 027 28,720	13 082 28,841	13 163 29,020	13 218 29,141	13 077 28,830	13 132 28,951	13 136 28,960	13 187 29,073	13 441 29,632	13 471 29,699

930G Wheel Loader

Standard VersaLink

Operating Specifications with Bucket

Pin-on Buckets 	General Purpose						
	Bolt-On Cutting Edge		Bolt-On Teeth and Segments		Bolt-On Teeth		
Rated bucket capacity (§)	m ³	2.3	2.5	2.3	2.5	2.1	2.3
	yd ³	3.0	3.2	3.0	3.2	2.7	3.0
Struck capacity (§)	m ³	1.9	2.1	1.9	2.1	1.8	2.0
	yd ³	2.5	2.7	2.5	2.7	2.4	2.6
Bucket width	mm	2550	2550	2585	2585	2585	2585
	ft/in	8'4"	8'4"	8'6"	8'6"	8'6"	8'6"
10 Dump clearance at full lift and 45° discharge (§)	mm	2917	2871	2804	2758	2804	2758
	ft/in	9'7"	9'5"	9'2"	9'1"	9'2"	9'1"
14 Reach at full lift and 45° discharge (§)	mm	925	971	1019	1065	1019	1065
	ft/in	3'0"	3'2"	3'4"	3'6"	3'4"	3'6"
Reach at 45° discharge and 2130 mm (7'0") clearance (§)	mm	1542	1564	1574	1593	1574	1593
	ft/in	5'1"	5'2"	5'2"	5'3"	5'2"	5'3"
Reach with lift arms horizontal and bucket level	mm	2458	2523	2604	2669	2604	2669
	ft/in	8'1"	8'3"	8'7"	8'9"	8'7"	8'9"
20 Digging depth (§)	mm	147	147	160	160	160	160
	in	5.8"	5.8"	6.3"	6.3"	6.3"	6.3"
6 Overall length	mm	7327	7392	7473	7538	7453	7518
	ft/in	24'0"	24'3"	24'6"	24'9"	24'5"	24'8"
13 Overall height with bucket at full raise (§)	mm	5276	5343	5276	5343	5276	5343
	ft/in	17'4"	17'6"	17'4"	17'6"	17'4"	17'6"
24 Loader clearance radius with bucket in carry position (§)	mm	11 561	11 595	11 679	11 714	11 679	11 714
	ft/in	37'11"	38'0"	38'4"	38'5"	38'4"	38'5"
Static tipping load straight (§)	kg	9794	9698	9626	9529	9732	9637
	lb	21,592	21,381	21,222	21,008	21,455	21,246
Static tipping load full 40° turn (§)	kg	8527	8438	8359	8269	8466	8376
	lb	18,799	18,603	18,429	18,230	18,664	18,466
Breakout force (§)	kg	14 567	13 757	14 432	13 622	15 430	14 519
	lb	32,115	30,329	31,817	30,032	34,018	32,009
Operating weight	kg	12 985	13 026	13 121	13 162	13 035	13 076
	lb	28,627	28,718	28,927	29,017	28,737	28,828

Static tipping and operating weights shown are for 930G with cab with A/C, optional counterweight, limited slip axles, heavy duty rear brakes, additional guarding, sound suppression, work tool, 80 kg (176 lb) operator and 600/65 R25 GP-3D tires.

* Dimensions are measured to the tip of the bucket teeth to provide accurate clearance data. SAE standards specify the cutting edge.

(§) Specifications and ratings conform to all applicable standards recommended by the Society of Automotive Engineers (SAE), including SAE Standards J732 JUN92 and J742 FEB85 governing ratings.


930G Wheel Loader

High Density General Purpose						Light Material	Woodchip
Bolt-On Cutting Edge		Bolt-On Teeth and Segments		Bolt-On Teeth		Bolt-On Cutting Edge	Bolt-On Cutting Edge
2.1 2.7	2.3 3.0	2.1 2.7	2.3 3.0	2.0 2.6	2.1 2.7	2.8 3.6	5.0 6.5
1.7 2.2	2.0 2.6	1.7 2.2	1.8 2.4	1.6 2.1	1.9 2.5	2.3 3.0	4.1 5.3
2550 8'4"	2550 8'4"	2585 8'6"	2585 8'6"	2585 8'6"	2585 8'6"	2550 8'4"	3392 11'2"
3027 9'11"	2992 9'10"	2923 9'7"	2888 9'6"	2923 9'7"	2888 9'6"	2891 9'6"	2777 9'1"
966 3'2"	1007 3'4"	1069 3'6"	1110 3'8"	1069 3'6"	1110 3'8"	1104 3'7"	1071 3'6"
1637 5'4"	1661 5'5"	1689 5'6"	1712 5'7"	1689 5'6"	1712 5'7"	1707 5'7"	1611 5'3"
2385 7'10"	2438 8'0"	2531 8'4"	2584 8'6"	2531 8'4"	2584 8'6"	2578 8'5"	2660 8'9"
142 5.6"	147 5.8"	155 6.1"	160 6.3"	155 6.1"	160 6.3"	159 6.3"	142 5.6"
7250 23'9"	7307 24'0"	7396 24'3"	7453 24'5"	7375 24'2"	7433 24'5"	7456 24'6"	7525 24'8"
5222 17'2"	5230 17'2"	5222 17'2"	5230 17'2"	5222 17'2"	5230 17'2"	5304 17'5"	5630 18'6"
11 520 37'10"	11 550 37'11"	11 637 38'2"	11 668 38'3"	11 637 38'2"	11 668 38'3"	11 631 38'2"	12 430 40'9"
10 079 22,221	10 019 22,088	9911 21,850	9850 21,716	10 018 22,086	9957 21,952	9800 21,605	9891 21,806
8793 19,385	8739 19,266	8625 19,015	8570 18,894	8732 19,251	8677 19,130	8532 18,810	8579 18,914
15 634 34,467	14 884 32,814	15 499 34,170	14 750 32,518	16 636 36,676	15 785 34,800	13 199 29,099	12 232 26,967
12 862 28,356	12 866 28,365	12 998 28,656	13 002 28,665	12 912 28,466	12 916 28,475	12 984 28,625	13 232 29,172

930G Wheel Loader

High Lift VersaLink

Operating Specifications with Bucket

	Hook-on Buckets using Quick Coupler		General Purpose								
			Bolt-On Cutting Edge			Bolt-On Teeth and Segments			Bolt-On Teeth		
Rated bucket capacity (§)	m ³ yd ³		2.1 2.7	2.3 3.0	2.5 3.2	2.1 2.7	2.3 3.0	2.5 3.2	1.9 2.4	2.1 2.7	2.3 3.0
Struck capacity (§)	m ³ yd ³		1.7 2.2	1.9 2.5	2.1 2.7	1.7 2.2	1.9 2.5	2.1 2.7	1.6 2.1	1.8 2.4	2.0 2.6
Bucket width	mm ft/in		2550 8'4"	2550 8'4"	2550 8'4"	2585 8'6"	2585 8'6"	2585 8'6"	2585 8'6"	2585 8'6"	2585 8'6"
10 Dump clearance at full lift and 45° discharge (§)	mm ft/in		3343 11'0"	3283 10'9"	3237 10'7"	3231 10'7"	3170 10'5"	3125 10'3"	3231 10'7"	3170 10'5"	3125 10'3"
14 Reach at full lift and 45° discharge (§)	mm ft/in		936 3'1"	996 3'3"	1042 3'5"	1030 3'5"	1090 3'7"	1136 3'9"	1030 3'5"	1090 3'7"	1136 3'9"
Reach at 45° discharge and 2130 mm (7'0") clearance (§)	mm ft/in		1956 6'5"	1987 6'6"	2010 6'7"	1994 6'7"	2022 6'8"	2043 6'8"	1994 6'7"	2022 6'8"	2043 6'8"
Reach with lift arms horizontal and bucket level	mm ft/in		2912 9'7"	2997 9'10"	3062 10'1"	3058 10'0"	3143 10'4"	3208 10'6"	3058 10'0"	3143 10'4"	3208 10'6"
20 Digging depth (§)	mm in		206 8.1"	206 8.1"	206 8.1"	219 8.6"	219 8.6"	219 8.6"	219 8.6"	219 8.6"	219 8.6"
6 Overall length	mm ft/in		7901 25'11"	7986 26'2"	8051 26'5"	8047 26'5"	8132 26'8"	8197 26'11"	8032 26'4"	8117 26'8"	8182 26'10"
13 Overall height with bucket at full raise (§)	mm ft/in		5803 19'0"	5882 19'4"	5915 19'5"	5803 19'0"	5882 19'4"	5915 19'5"	5803 19'0"	5882 19'4"	5915 19'5"
24 Loader clearance radius with bucket in carry position (§)	mm ft/in		12 126 39'9"	12 173 39'11"	12 209 40'1"	12 248 40'2"	12 296 40'4"	12 333 40'6"	12 248 40'2"	12 296 40'4"	12 333 40'6"
Static tipping load straight (§)	kg lb		7425 16,369	7305 16,105	7238 15,957	7266 16,019	7156 15,776	7077 15,602	7367 16,242	7258 16,001	7179 15,827
Static tipping load full 40° turn (§)	kg lb		6412 14,136	6290 13,867	6236 13,748	6253 13,786	6149 13,556	6074 13,391	6354 14,008	6251 13,781	6177 13,618
Breakout force (§)	kg lb		14 798 32,624	13 780 30,380	13 088 28,854	14 663 32,327	13 645 30,082	12 953 28,557	15 646 34,494	14 509 31,987	13 740 30,292
Operating weight	kg lb		13 275 29,267	13 335 29,399	13 376 29,489	13 410 29,564	13 470 29,696	13 511 29,787	13 325 29,377	13 385 29,509	13 426 29,599

Static tipping and operating weights shown are for 930G with cab with A/C, optional counterweight, limited slip axles, heavy duty rear brakes, additional guarding, sound suppression, work tool, 80 kg (176 lb) operator and 600/65 R25 GP-3D tires.

* Dimensions are measured to the tip of the bucket teeth to provide accurate clearance data. SAE standards specify the cutting edge.

(§) Specifications and ratings conform to all applicable standards recommended by the Society of Automotive Engineers (SAE), including SAE Standards J732 JUN92 and J742 FEB85 governing ratings.


930G Wheel Loader

Heavy Duty General Purpose						Light Material		Ejector	Woodchip
Bolt-On Cutting Edge		Bolt-On Teeth and Segments		Bolt-On Teeth		Bolt-On Cutting Edge		Bolt-On Cutting Edge	Bolt-On Cutting Edge
2.1 2.7	2.3 3.0	2.1 2.7	2.3 3.0	2.0 2.6	2.1 2.7	2.8 3.6	3.1 4.0	3.1 4.0	5.0 6.5
1.7 2.2	1.9 2.5	1.7 2.2	1.9 2.5	1.6 2.1	1.8 2.4	2.3 3.0	2.6 3.4	2.6 3.4	4.1 5.3
2550 8'4"	2550 8'4"	2585 8'6"	2585 8'6"	2585 8'6"	2585 8'6"	2550 8'4"	2550 8'4"	2550 8'4"	3392 11'2"
3436 11'3"	3402 11'2"	3332 10'11"	3298 10'10"	3332 10'11"	3298 10'10"	3300 10'10"	3256 10'8"	3238 10'7"	3171 10'5"
1073 3'6"	1114 3'8"	1176 3'10"	1217 4'0"	1176 3'10"	1217 4'0"	1210 4'0"	1252 4'1"	980 3'3"	1188 3'11"
2135 7'0"	2161 7'1"	2191 7'2"	2215 7'3"	2191 7'2"	2215 7'3"	2210 7'3"	2229 7'4"	1948 6'5"	2121 7'0"
2919 9'7"	2972 9'9"	3065 10'1"	3118 10'3"	3065 10'1"	3118 10'3"	3112 10'3"	3172 10'5"	3017 9'11"	3212 10'6"
157 6.2"	162 6.4"	170 6.7"	175 6.9"	170 6.7"	175 6.9"	174 6.9"	181 7.1"	249 9.8"	149 5.9"
7877 25'10"	7933 26'0"	8023 26'4"	8079 26'6"	8007 26'3"	8063 26'5"	8081 26'6"	8146 26'9"	8033 26'4"	8165 26'9"
5835 19'2"	5843 19'2"	5835 19'2"	5843 19'2"	5835 19'2"	5843 19'2"	5971 19'7"	6029 19'9"	6238 20'6"	6252 20'6"
12 089 39'8"	12 122 39'9"	12 211 40'1"	12 244 40'2"	12 211 40'1"	12 244 40'2"	12 210 40'1"	12 250 40'2"	12 202 40'0"	12 974 42'7"
7696 16,967	7612 16,782	7535 16,612	7450 16,425	7637 16,837	7553 16,652	7466 16,460	7388 16,288	7219 15,915	7121 15,699
6662 14,687	6582 14,511	6501 14,332	6420 14,154	6603 14,557	6523 14,381	6438 14,193	6359 14,019	6200 13,669	6101 13,450
14 751 32,521	14 103 31,092	14 617 32,225	13 969 30,797	15 583 34,355	14 865 32,772	12 660 27,911	12 099 26,674	13 427 29,602	11 464 25,274
13 172 29,039	13 227 29,161	13 307 29,337	13 362 29,458	13 222 29,150	13 277 29,271	13 281 29,280	13 332 29,392	13 586 29,952	13 616 30,018

930G Wheel Loader

High Lift VersaLink

Operating Specifications with Bucket

Pin-on Buckets 	General Purpose						
	Bolt-On Cutting Edge		Bolt-On Teeth and Segments		Bolt-On Teeth		
Rated bucket capacity (§)	m ³	2.3	2.5	2.3	2.5	2.1	2.3
	yd ³	3.0	3.2	3.0	3.2	2.7	3.0
Struck capacity (§)	m ³	1.9	2.1	1.9	2.1	1.8	2.0
	yd ³	2.5	2.7	2.5	2.7	2.4	2.6
Bucket width	mm	2550	2550	2585	2585	2585	2585
	ft/in	8'4"	8'4"	8'6"	8'6"	8'6"	8'6"
10 Dump clearance at full lift and 45° discharge (§)	mm	3417	3371	3304	3258	3304	3258
	ft/in	11'3"	11'1"	10'10"	10'8"	10'10"	10'8"
14 Reach at full lift and 45° discharge (§)	mm	925	971	1019	1065	1019	1065
	ft/in	3'0"	3'2"	3'4"	3'6"	3'4"	3'6"
Reach at 45° discharge and 2130 mm (7'0") clearance (§)	mm	1978	2004	2020	2043	2020	2043
	ft/in	6'6"	6'7"	6'8"	6'8"	6'8"	6'8"
Reach with lift arms horizontal and bucket level	mm	2852	2917	2998	3063	2998	3063
	ft/in	9'4"	9'7"	9'10"	10'1"	9'10"	10'1"
20 Digging depth (§)	mm	162	162	175	175	175	175
	in	6.4"	6.4"	6.9"	6.9"	6.9"	6.9"
6 Overall length	mm	7813	7878	7959	8024	7943	8008
	ft/in	25'8"	25'10"	26'1"	26'4"	26'1"	26'3"
13 Overall height with bucket at full raise (§)	mm	5768	5836	5768	5836	5768	2836
	ft/in	18'11"	19'2"	18'11"	19'2"	18'11"	19'2"
24 Loader clearance radius with bucket in carry position (§)	mm	12 037	12 074	12 161	12 198	12 161	12 198
	ft/in	39'6"	39'7"	39'11"	40'0"	39'11"	40'0"
Static tipping load straight (§)	kg	7862	7778	7700	7615	7803	7718
	lb	17,333	17,148	16,976	16,788	17,203	17,015
Static tipping load full 40° turn (§)	kg	6809	6730	6647	6567	6750	6671
	lb	15,011	14,837	14,654	14,478	14,881	14,707
Breakout force (§)	kg	15 619	14 754	15 484	14 620	16 568	15 594
	lb	34,434	32,527	34,137	32,232	36,526	34,379
Operating weight	kg	13 130	13 171	13 266	13 307	13 180	13 221
	lb	28,947	29,037	29,247	29,337	29,057	29,147

Static tipping and operating weights shown are for 930G with cab with A/C, optional counterweight, limited slip axles, heavy duty rear brakes, additional guarding, sound suppression, work tool, 80 kg (176 lb) operator and 600/65 R25 GP-3D tires.

* Dimensions are measured to the tip of the bucket teeth to provide accurate clearance data. SAE standards specify the cutting edge.

(§) Specifications and ratings conform to all applicable standards recommended by the Society of Automotive Engineers (SAE), including SAE Standards J732 JUN92 and J742 FEB 85 governing ratings.

930G Wheel Loader

High Density General Purpose						Light Material	Woodchip
Bolt-On Cutting Edge		Bolt-On Teeth and Segments		Bolt-On Teeth		Bolt-On Cutting Edge	Bolt-On Cutting Edge
2.1 2.7	2.3 3.0	2.1 2.7	2.3 3.0	2.0 2.6	2.1 2.7	2.8 3.6	5.0 6.5
1.7 2.2	2.0 2.6	1.7 2.2	1.8 2.4	1.6 2.1	1.9 2.5	2.3 3.0	4.1 5.3
2550 8'4"	2550 8'4"	2585 8'6"	2585 8'6"	2585 8'6"	2585 8'6"	2550 8'4"	3392 11'2"
3527 11'7"	3492 11'5"	3423 11'3"	3388 11'1"	3423 11'3"	3388 11'1"	3391 11'2"	3277 10'9"
965 3'2"	1006 3'4"	1068 3'6"	1110 3'8"	1068 3'6"	1110 3'8"	1103 3'7"	1071 3'6"
2065 6'9"	2092 6'10"	2125 7'0"	2151 7'1"	2125 7'0"	2151 7'1"	2145 7'0"	2059 6'9"
2779 9'1"	2832 9'3"	2925 9'7"	2978 9'9"	2925 9'7"	2978 9'9"	2971 9'9"	3054 10'0"
157 6.2"	162 6.4"	170 6.7"	175 6.9"	170 6.7"	175 6.9"	174 6.9"	157 6.2"
7737 25'5"	7793 25'7"	7883 25'10"	7939 26'1"	7866 25'10"	7923 26'0"	7940 26'1"	8012 26'3"
5712 18'9"	5719 18'9"	5712 18'9"	5719 18'9"	5712 18'9"	5719 18'9"	5796 19'0"	6111 20'1"
11 992 39'4"	12 026 39'5"	12 115 39'9"	12 149 39'10"	12 115 39'9"	12 149 39'10"	12 113 39'9"	12 884 42'3"
8102 17,862	8055 17,758	7940 17,505	7892 17,399	8043 17,732	7996 17,628	7852 17,311	7800 17,196
7035 15,510	6993 15,417	6873 15,152	6830 15,058	6976 15,380	6934 15,287	6800 14,992	6722 14,820
16 759 36,947	15 955 35,175	16 625 36,652	15 820 34,877	17 858 39,370	16 944 37,355	14 146 31,187	13 133 28,953
13 007 28,676	13 011 28,684	13 143 28,976	13 147 28,984	13 057 28,786	13 061 28,795	13 129 28,945	13 377 29,491

930G Wheel Loader

Supplemental Specifications

	Change in Operating Weight		Change in Articulated Static Tipping Load with Hook-On Bucket 2.1 m ³ (2.75 yd ³)	
	kg	lb	kg	lb
W/O Air conditioner	-37	-82	-59	-130
Canopy, ROPS (less cab)	-218	-481	-149	-328
W/O Optional counterweight, 470 kg/1100 lb	-470	-1036	-658	-1451
W/O Guard, crankcase	-16	-35	-20	-44
W/O Guard, driveshaft	-17	-37	-12	-26
W/O Guard, power train	-58	-128	-49	-108
W/O Ride Control System	-45	-99	-24	-53
W/O Secondary steering	-17	-37	-20	-44
Tires, 1-piece rims				
17.5-25, 12PR (L-2)	-868	-1914	-486	-1071
17.5-25, 12PR (L-3)	-796	-1755	-446	-983
17.5-25, radial (L-2)	-828	-1825	-464	-1023
17.5-25, radial (L-3)	-728	-1605	-408	-899
Tires, 3-piece rims				
17.5-25, 12PR (L-2)	-744	-1640	-417	-919
17.5-25, 12PR (L-3)	-672	-1482	-376	-829
17.5-25, radial (L-2)	-704	-1552	-394	-869
17.5-25, radial (L-3)	-604	-1332	-338	-745
20.5-25, 12PR (L-2)	-456	-1005	-255	-562
20.5-25, 12PR (L-3)	-252	-556	-141	-311
20.5 R25, radial (L-2)	-388	-855	-217	-478
20.5 R25, radial (L-3)	-216	-476	-121	-267
600/65R25, radial (L-3) Michelin	-212	-467	-119	-262
600/65R25, radial (L-3) Goodyear	0	0	0	0

930G Wheel Loader

Typical Material Densities – Loose

	kg/m ³	lb/yd ³
Basalt	1960	3305
Bauxite, Kaolin	1420	2394
Clay		
natural bed	1660	2799
dry	1480	2495
wet	1660	2799
Clay and gravel		
dry	1420	2394
wet	1540	2596
Decomposed rock		
75% rock, 25% earth	1960	3305
50% rock, 50% earth	1720	2900
25% rock, 75% earth	1570	2647
Earth		
dry, packed	1510	2546
wet, excavated	1600	2698
Granite		
broken	1660	2799
Gravel		
pitrun	1930	3254
dry	1510	2546
dry, 6-50 mm (0.2-2")	1690	2849
wet, 6-50 mm (0.2-2")	2020	3406

	kg/m ³	lb/yd ³
Gypsum		
broken	1810	3052
crushed	1600	2698
Limestone		
broken	1540	2596
crushed	1540	2596
Sand		
dry, loose	1420	2394
damp	1690	2849
wet	1840	3102
Sand and clay		
loose	1600	2698
Sand and gravel		
dry	1720	2900
wet	2020	3416
Sandstone	1510	2546
Shale	1250	2107
Slag		
broken	1750	2950
Stone		
crushed	1600	2698

Bucket Selector

