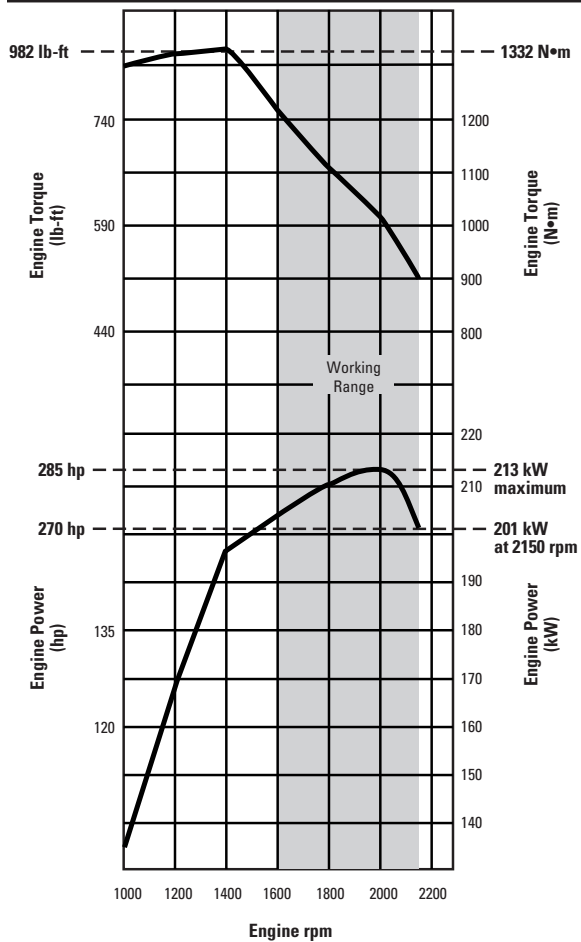


972G Series II Wheel Loader

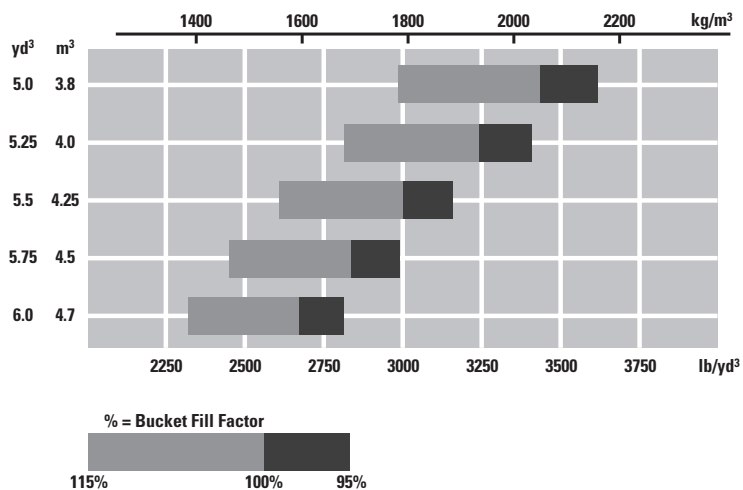


972G Series II Wheel Loader

Operation Specifications

		General Purpose Buckets								
		Bolt-on edges			Teeth and segments			Teeth		
		Bolt-on edges	Teeth and segments	Teeth	Bolt-on edges	Teeth and segments	Teeth	Bolt-on edges	Teeth and segments	Teeth
Rated capacity	m ³	4.7	4.7	4.5	4.5	4.5	4.25	4.25	4.25	4.0
	yd ³	6.0	6.0	5.75	5.75	5.75	5.5	5.5	5.5	5.25
Struck capacity	m ³	3.95	3.95	3.8	3.82	3.82	3.67	3.62	3.62	3.43
	yd ³	5.14	5.14	4.94	4.97	4.97	4.77	4.7	4.7	4.46
Width	mm	3218	3193	3193	3220	3311	3311	3220	3311	3311
	ft/in	10'6"	10'5"	10'5"	10'6"	10'10"	10'10"	10'6"	10'10"	10'10"
Dump clearance at full lift and 45° discharge	mm	3232	3070	3070	3250	3111	3111	3289	3151	3151
	ft/in	10'7"	10'0"	10'0"	10'7"	10'2"	10'2"	10'9"	10'4"	10'4"
Reach at full lift and 45° discharge	mm	1325	1457	1457	1310	1430	1430	1281	1401	1401
	ft/in	4'4"	4'9"	4'9"	4'3"	4'8"	4'8"	4'2"	4'7"	4'7"
Reach with lift arms horizontal and bucket level	mm	2938	3144	3144	2916	3097	3097	2866	3047	3047
	ft/in	9'7"	10'3"	10'3"	9'6"	10'1"	10'1"	9'4"	9'11"	9'11"
Digging depth	mm	118	118	88	108	108	78	108	108	78
	in	4.6"	4.6"	3.4"	4.2"	4.2"	3.0"	4.2"	4.2"	3.0"
Overall length	mm	9159	9392	9392	9129	9330	9330	9079	9280	9280
	ft/in	30'0"	30'9"	30'9"	29'11"	30'7"	30'7"	29'9"	30'5"	30'5"
Overall height with bucket at full raise	mm	5990	5990	5990	6100	6100	6100	6054	6054	6054
	ft/in	19'7"	19'7"	19'7"	20'0"	20'0"	20'0"	19'10"	19'10"	19'10"
Loader clearance circle with bucket in carry position	mm	14 922	15 042	15 042	14 904	15 107	15 107	14 877	15 079	15 079
	ft/in	48'11"	49'4"	49'4"	48'10"	49'6"	49'6"	48'9"	49'5"	49'5"
Static tipping load, straight**	kg	18 975	18 800	19 150	18 360	18 230	18 545	18 520	18 350	18 670
	lb	41,821	41,435	42,207	40,465	40,179	40,885	40,818	40,443	41,153
Static tipping load, articulated at full 37° turn	kg	16 670	16 490	16 830	16 200	16 060	16 360	16 340	16 180	16 480
	lb	36,741	36,344	37,093	35,705	35,396	36,068	36,013	35,661	36,318
Breakout force***	kN	216.1	212.9	227.2	219.2	218.6	231.6	228.1	227.2	243.0
	lb	48,554	47,286	51,034	49,257	49,107	52,032	51,242	51,052	54,592
Operating weight**	kg	25 490	25 610	25 455	25 087	25 229	25 063	24 981	25 154	24 988
	lb	56,180	56,444	56,103	55,292	55,605	55,254	55,058	55,439	55,074

Bucket Selection Guide/Material Density



972G Series II Wheel Loader

			Material Handling Buckets						Rock Buckets		Heavy-Duty Rock Buckets	
Bolt-on edges	Teeth and segments	Teeth	Bolt-on edges	Teeth and segments	Teeth	Bolt-on edges	Teeth and segments	Teeth	Bolt-on edges	Teeth and segments	Bolt-on edges	Teeth and segments
4.0	4.0	3.8	4.7	4.7	4.5	4.25	4.25	4.0	4.0	4.0	4.0	4.0
5.25	5.25	5.0	6.0	6.0	5.75	5.5	5.5	5.25	5.25	5.25	5.25	5.25
3.43	3.43	3.28	4.03	4.03	3.88	3.66	3.66	3.51	3.45	3.45	3.45	3.45
4.46	4.46	4.27	5.24	5.24	5.04	4.76	4.76	4.56	4.49	4.49	4.49	4.49
3059	3150	3150	3220	3311	3311	3220	3311	3311	3306	3252	3306	3252
10'0"	10'4"	10'4"	10'6"	10'10"	10'10"	10'6"	10'10"	10'10"	10'10"	10'8"	10'10"	10'8"
3289	3151	3151	3144	2997	2997	3208	3061	3061	3215	3034	3215	3034
10'9"	10'4"	10'4"	10'3"	9'10"	9'10"	10'6"	10'0"	10'0"	10'6"	9'11"	10'6"	9'11"
1281	1401	1401	1255	1364	1364	1192	1301	1301	1458	1587	1458	1587
4'2"	4'7"	4'7"	4'1"	4'5"	4'5"	3'10"	4'3"	4'3"	4'9"	5'2"	4'9"	5'2"
2866	3047	3047	2971	3152	3152	2881	3062	3062	3039	3253	3039	3253
9'4"	9'11"	9'11"	9'8"	10'4"	10'4"	9'5"	10'0"	10'0"	9'11"	10'8"	9'11"	10'8"
108	108	78	108	108	78	108	108	78	108	78	108	108
4.2"	4.2"	3.0"	4.2"	4.2"	3.0"	4.2"	4.2"	3.0"	4.2"	3.0"	4.2"	4.2"
9079	9280	9280	9184	9385	9385	9094	9295	9295	9252	9512	9252	9512
29'9"	30'5"	30'5"	30'1"	30'9"	30'9"	29'10"	30'5"	30'5"	30'4"	31'2"	30'4"	31'2"
6054	6054	6054	6135	6135	6135	6051	6051	6051	6047	6047	6207	6207
19'10"	19'10"	19'10"	20'1"	20'1"	20'1"	19'10"	19'10"	19'10"	19'10"	19'10"	20'4"	20'4"
14 731	14 934	14 934	14 934	15 137	15 137	14 885	15 087	15 087	15 049	15 168	15 049	15 168
48'3"	48'11"	48'11"	48'11"	49'7"	49'7"	48'10"	49'5"	49'5"	49'4"	49'9"	49'4"	49'9"
18 590	18 420	18 730	18 040	17 880	18 180	18 240	18 080	18 390	18 800	18 720	18 660	18 580
40,972	40,598	41,281	39,760	39,408	40,069	40,201	39,848	40,532	41,435	41,259	41,127	40,950
16 410	16 250	16 540	15 900	15 740	16 020	16 090	15 920	16 220	16 610	16 530	16 460	16 380
36,168	35,815	36,454	35,044	34,691	35,308	35,462	35,088	35,749	36,600	36,430	36,278	36,102
228.5	227.6	243.3	211.9	211.2	224.6	226.8	226.0	241.4	203.9	212.8	203.3	203.0
51,328	51,137	54,668	47,598	47,439	50,470	50,949	50,785	54,242	45,813	46,333	45,680	45,612
24 907	25 080	24 926	25 135	25 308	25 142	25 027	25 200	25 034	25 148	25 241	25 320	25 411
54,895	55,276	54,937	55,396	55,779	55,413	55,160	55,541	55,175	55,426	55,631	55,805	56,006

972G Series II Wheel Loader

Operation Specifications

		Quick Coupler Buckets			Waste Buckets	High-Lift Delta*
		Bolt-on edges	Teeth and segments	Teeth	Bolt-on edges	All buckets
Rated capacity	m ³	4.2	4.2	4.0	6.5	
	yd ³	5.5	5.5	5.25	8.5	
Struck capacity	m ³	3.6	3.6	3.4	5.6	
	yd ³	4.7	4.7	4.5	7.28	
Width	mm	3218	3193	3193	3355	
	ft/in	10'6"	10'5"	10'5"	11'0"	
Dump clearance at full lift and 45° discharge	mm	3198	3035	3035	3191	336
	ft/in	10'5"	9'11"	9'11"	10'5"	1'1"
Reach at full lift and 45° discharge	mm	1366	1498	1498	1173	25
	ft/in	4'5"	4'10"	4'10"	3'10"	0'1"
Reach with lift arms horizontal and bucket level	mm	2992	3197	3197	2880	274
	ft/in	9'9"	10'5"	10'5"	9'5"	0'10"
Digging depth	mm	118	118	88	133	0
	in	4.6"	4.6"	3.4"	5.2"	0'0"
Overall length	mm	9212	9446	9446	9111	335
	ft/in	30'2"	30'11"	30'11"	29'10"	1'1"
Overall height with bucket at full raise	mm	6015	6015	6015	6385	335
	ft/in	19'8"	19'8"	19'8"	20'11"	1'1"
Loader clearance circle with bucket in carry position	mm	14 951	15 072	15 072	15 027	335
	ft/in	49'0"	49'5"	49'5"	49'3"	1'1"
Static tipping load, straight**	kg	19,530	19,490	19 310	20,830	-1500
	lb	43,044	42,956	42,559	45,909	-3306
Static tipping load, articulated at full 37° turn	kg	17 220	17 170	17 040	18,300	-1370
	lb	37,953	37,843	37,556	40,333	-3019
Breakout force***	kN	204.6	206.2	219.7	223.8	-7.1
	lb	45,966	46,330	49,366	50,282	-1595
Operating weight**	kg	24 909	25 010	24 855	25 557	87
	lb	54,879	52,918	54,780	56,328	192

* High lift column shows changes in specifications from standard lift to high lift. Add or subtract as indicated to or from specifications given for appropriate bucket to calculate high lift specifications.

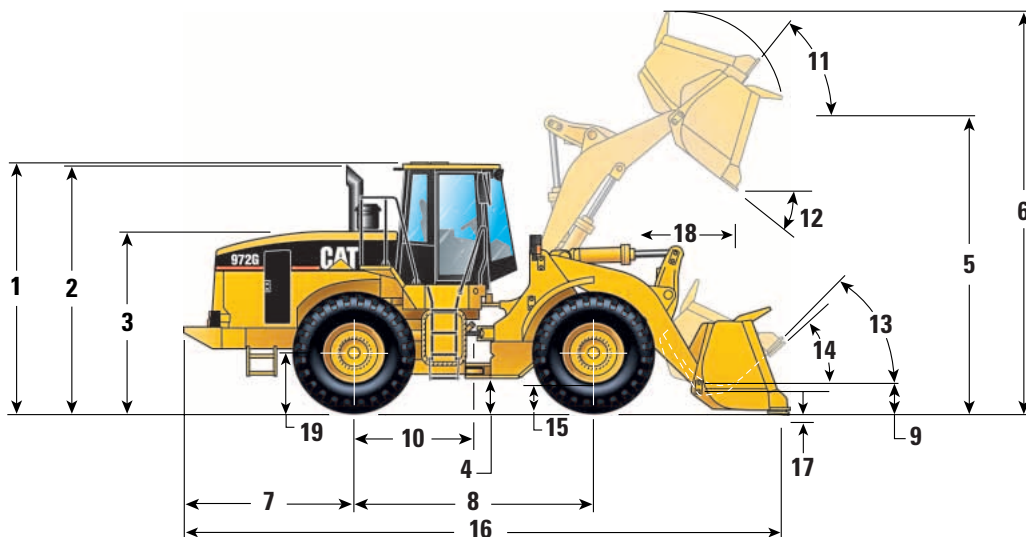
** Static tipping load and operating weight shown include sound-suppression cab and ROPS, 26.5 R25 XHA (L-3) steel radial tires, full fuel tank, coolant, lubricants and operator.

*** Measured 102 mm (4.0"): behind tip of cutting edge with bucket hinge pin as pivot point in accordance with SAE J732c.

972G Series II Wheel Loader

Dimensions

All dimensions are approximate.



1	Height to top of ROPS	3580 mm	11'9"
2	Height to top of exhaust pipe	3535 mm	11'7"
3	Height to top of hood	2555 mm	8'5"
4	Ground clearance/ Standard tire 26.5 R25 XHA (L-3) See chart below for other tires	565 mm	22"
5	B-Pin height	4445 mm	14'7"
6	Overall height*	Dimensions vary with bucket	
7	Center line of rear axle to edge of counterweight	2460 mm	8'1"
8	Wheelbase	3450 mm	11'4"
9	B-Pin height @ carry	485 mm	19"
10	Center line of rear axle to hitch	1725 mm	5'8"

11	Rack back @ maximum lift	55°
12	Dump angle @ maximum lift (GP bucket)	50°**
13	Rack back @ carry	47°
14	Rack back @ ground	42°
15	Axle Housing Clearance	430 mm 1'5"
16	Overall Length*	Dimensions vary with bucket
17	Digging Depth*	Dimensions vary with bucket
18	Reach*	Dimensions vary with bucket
19	Height to center line of axle	795 mm 2'7"

*Refer to Operation Specifications chart.
**MH bucket is 45°.

Tires

Tread width for all tires is 2230 mm (7'4")

	Width over tires		Change in vertical dimensions		Change in operating weight		Change in static tipping load – straight	
	mm	inches	mm	inches	kg	lb	kg	lb
26.5-25 20PR (L-2)	2965	117	-80	-3.2	-469	-1030	-349	-770
26.5-25 20PR (L-3)	3035	119	-25	-1.0	-224	-490	-168	-370
26.5 R25 XHA 1 (L-3) standard	2965	117	—	—	—	—	—	—
26.5 R25 GP-2B 1 (L-3)	3000	118	-30	-1.2	-49	-100	-36	-80
26.5 R25 MX (L-5)	3000	118	+63	+2.5	+1012	+2230	+686	+1512

NOTE:

Tire options include tires and rims.

In certain applications (such as load-and-carry work) the loader's productive capabilities might exceed the tires' tonnes-km/h (ton-mph) capabilities. Caterpillar recommends consulting a tire supplier to evaluate all conditions before selecting a tire model.