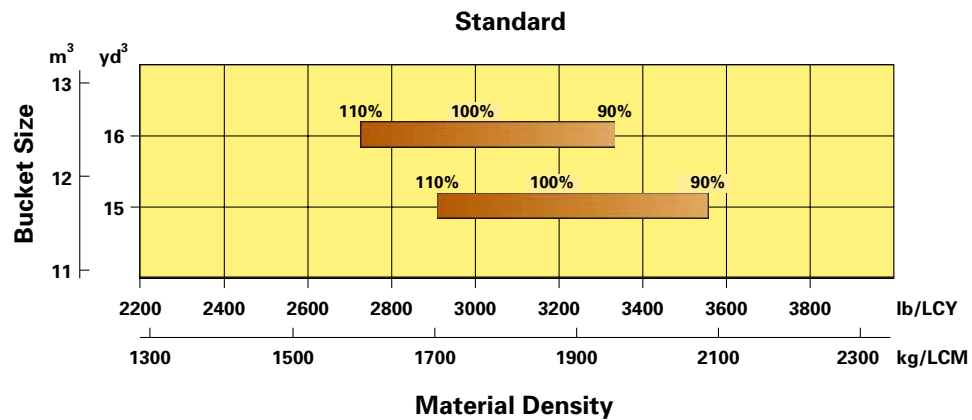


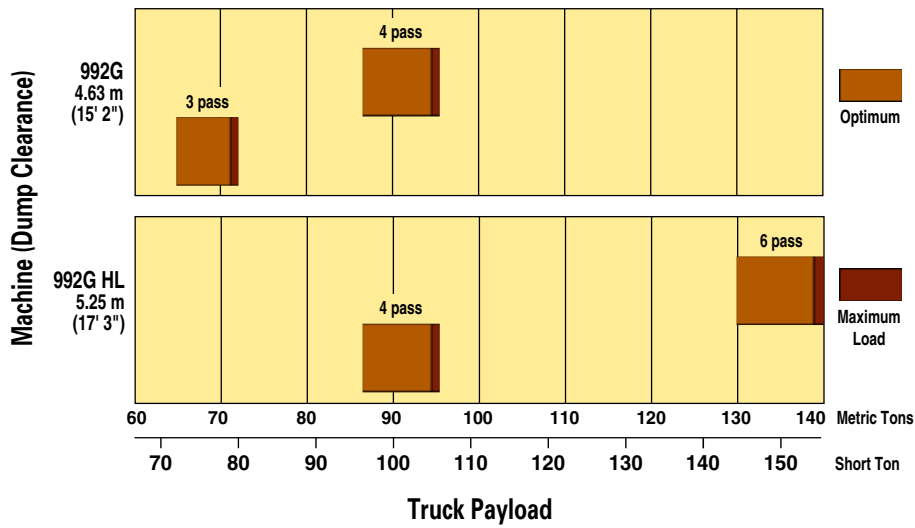
992G Wheel Loader

Standard Bucket Selection Guide



992G Wheel Loader

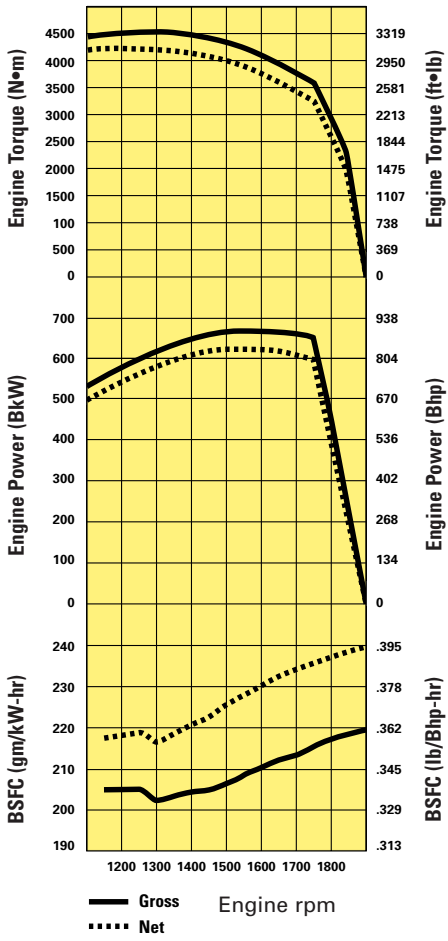
Large Wheel Loader/Truck Application Match



777D = 100.5 Short Ton (92 Metric Tons) maximum payload

785C = 161.1 Short Ton (146.1 Metric Tons) maximum payload

992G Wheel Loader



992G Wheel Loader

Loader Hydraulic System

System is completely sealed. Innovative low-effort controls.

Implement system with two pumps (1 fixed and 1 variable displacement)

| | | |
|--|---------|-----------|
| Output at 1883 rpm and 31 000 kPa (4500 psi) with SAE 10W oil at 66°C (150°F) | 452 lpm | 119.4 gpm |
|--|---------|-----------|

| | | |
|----------------------|------------|----------|
| Relief valve setting | 31 000 kPa | 4500 psi |
|----------------------|------------|----------|

Cylinders, double acting:

| | | |
|-----------------------|-----------------|--------------|
| lift, bore and stroke | 279.4 x 1173 mm | 11.0 x 46.2" |
|-----------------------|-----------------|--------------|

Cylinder, double acting:

| | | |
|-----------------------|-----------------|--------------|
| tilt, bore and stroke | 279.4 x 1816 mm | 11.0 x 71.5" |
|-----------------------|-----------------|--------------|

Pilot system, gear-type pump

| | | |
|---|--------|----------|
| Output at 1883 rpm and 2500 kPa (363 psi) | 80 lpm | 21.1 gpm |
|---|--------|----------|

| | | |
|---------------------------------|----------|---------|
| Relief valve setting (low idle) | 2500 kPa | 363 psi |
|---------------------------------|----------|---------|

Hydraulic cycle time (standard)

| | |
|-------|------|
| Raise | 9.12 |
|-------|------|

| | |
|------|------|
| Dump | 3.26 |
|------|------|

| | |
|--------------------------|------|
| Lower, empty, float down | 3.47 |
|--------------------------|------|

| | |
|-------|---------------|
| Total | 15.85 seconds |
|-------|---------------|

Features (standard)

- completely enclosed system
- low-effort, electro-hydraulic pilot-operated controls

992G Wheel Loader

Operation/Bucket Specifications

| | | Standard Spade Edge | | Large Spade Edge | | Heavy-duty Quarry | | Heavy-duty Mining | | |
|--|---------------------|---------------------|---------|------------------|---------|-------------------|---------|-------------------|---------|---------|
| | | Teeth & Segments | | Teeth & Segments | | Teeth & Segments | | Teeth | | |
| | | Std. | Hi-Lift | Std. | Hi-Lift | Std. | Hi-Lift | Std. | Hi-lift | |
| Rated capacity (§) | m ³ | 11.5 | 11.5 | 12.3 | 12.3 | 11.5 | 11.5 | 12.0 | 12.0 | |
| | yd ³ | 15.0 | 15.0 | 16.0 | 16.0 | 15.0 | 15.0 | 15.5 | 15.5 | |
| Struck capacity (§) | m ³ | 9.39 | 9.39 | 10.1 | 10.1 | 9.45 | 9.45 | 9.86 | 9.86 | |
| | yd ³ | 12.1 | 12.1 | 13.1 | 13.1 | 12.4 | 12.4 | 12.9 | 12.9 | |
| Width (§) | mm | 4824 | 4824 | 4824 | 4824 | 4824 | 4824 | 4840 | 4840 | |
| | in | 15' 10" | 15' 10" | 15' 10" | 15' 10" | 15' 10" | 15' 10" | 15' 11" | 15' 11" | |
| Dump clearance at full lift and 45° discharge. | With teeth*: | mm | 4636 | 5256 | 4636 | 5256 | 4574 | 5196 | 4623 | 5243 |
| | | in | 15' 3" | 17' 3" | 15' 3" | 17' 3" | 15' 1" | 17' 1" | 15' 2" | 17' 2" |
| | Bare (§): | mm | 5003 | 5623 | 5003 | 5623 | 5003 | 5623 | 5003 | 5623 |
| | | in | 16' 5" | 18' 5" | 16' 5" | 18' 5" | 16' 5" | 18' 5" | 16' 5" | 18' 5" |
| Reach at full lift and 45° discharge. | With teeth*: | mm | 2303 | 2299 | 2303 | 2299 | 2348 | 2337 | 2363 | 2358 |
| | | in | 7' 7" | 7' 6" | 7' 7" | 7' 6" | 7' 8" | 7' 8" | 7' 9" | 7' 9" |
| | Bare (§): | mm | 1699 | 1694 | 1699 | 1694 | 1699 | 1694 | 1729 | 1725 |
| | | in | 5' 7" | 5' 7" | 5' 7" | 5' 7" | 5' 7" | 5' 7" | 5' 8" | 5' 8" |
| Reach with boom – horizontal and bucket level. | With teeth*: | mm | 5105 | 5585 | 5105 | 5585 | 5163 | 5643 | 5186 | 5666 |
| | | in | 16' 9" | 18' 4" | 16' 9" | 18' 4" | 16' 11" | 18' 6" | 17' 0" | 18' 7" |
| | Bare (§): | mm | 4176 | 4657 | 4176 | 4657 | 4176 | 4657 | 4219 | 4700 |
| | | in | 13' 8" | 15' 3" | 13' 8" | 15' 3" | 13' 8" | 15' 3" | 13' 10" | 15' 5" |
| Digging depth (§) | mm | 140 | 144 | 140 | 144 | 140 | 144 | 149 | 149 | |
| | in | 5.5" | 5.7" | 5.5" | 5.7" | 5.5" | 5.7" | 5.9" | 5.9" | |
| Overall length | With teeth*: | mm | 15 585 | 16 175 | 15 585 | 16 175 | 15 604 | 16 194 | 15 636 | 16 226 |
| | | in | 51' 2" | 53' 1" | 51' 2" | 53' 1" | 51' 2" | 53' 2" | 51' 4" | 53' 3" |
| | Bare: | mm | 15 143 | 15 733 | 15 143 | 15 733 | 15 143 | 15 733 | 15 143 | 15 733 |
| | | in | 49' 8" | 51' 7" | 49' 8" | 51' 7" | 49' 8" | 51' 7" | 49' 8" | 51' 7" |
| Overall height with bucket at full raise (§) | mm | 9415 | 10 035 | 9415 | 10 035 | 9415 | 10 035 | 9415 | 10 035 | |
| | in | 30' 11" | 32' 11" | 30' 11" | 32' 11" | 30' 11" | 32' 11" | 30' 11" | 32' 11" | |
| Loader clearance circle with bucket in carry position. | With teeth*: | mm | 22 272 | 22 876 | 22 272 | 22 876 | 22 272 | 22 876 | 22 310 | 22 918 |
| | | in | 73' 1" | 75' 1" | 73' 1" | 75' 1" | 73' 1" | 75' 1" | 73' 2" | 75' 2" |
| | Bare (§): | mm | 21 882 | 22 464 | 21 882 | 22 464 | 21 882 | 22 464 | 21 942 | 22 512 |
| | | in | 71' 9" | 73' 8" | 71' 9" | 73' 8" | 71' 9" | 73' 8" | 72' | 73' 10" |
| Static tipping load straight † | kg | 58 469 | 56 432 | 58 130 | 56 095 | 56 422 | 54 403 | 57 692 | 55 661 | |
| | lb | 128,924 | 124,433 | 128,177 | 123,689 | 124,411 | 119,959 | 127,211 | 122,733 | |
| Static tipping load at full 40° turn | kg | 52 319 | 49 971 | 51 979 | 49 635 | 50 272 | 47 942 | 51 541 | 49 200 | |
| | lb | 115,363 | 110,186 | 114,614 | 109,445 | 110,850 | 105,712 | 113,648 | 108,486 | |
| Static tipping load at full 43° turn | kg | 51 146 | 48 799 | 50 806 | 48 443 | 49 099 | 46 750 | 50 368 | 48 008 | |
| | lb | 112,777 | 107,602 | 112,027 | 106,817 | 108,263 | 103,084 | 111,061 | 105,858 | |
| Breakout force †† (§) | kg | 66 462 | 64 990 | 65 690 | 64 222 | 64 757 | 63 289 | 65 428 | 63 959 | |
| | lb | 146,549 | 143,303 | 144,846 | 141,610 | 142,789 | 139,552 | 144,269 | 141,030 | |
| Operating weight † (§) | kg | 93 779 | 97 544 | 94 113 | 97 879 | 95 796 | 99 562 | 94 545 | 98 311 | |
| | lb | 206,783 | 215,085 | 207,519 | 215,823 | 211,230 | 219,534 | 208,472 | 216,776 | |

(§) Specifications and ratings conform to all applicable standards recommended by the Society of Automotive Engineers. SAE Standards J732C govern loader ratings and are denoted in the text by (§).

* Dimensions are also measured to the tip of the bucket teeth to provide accurate clearance data. SAE Standards specifies the cutting edge.

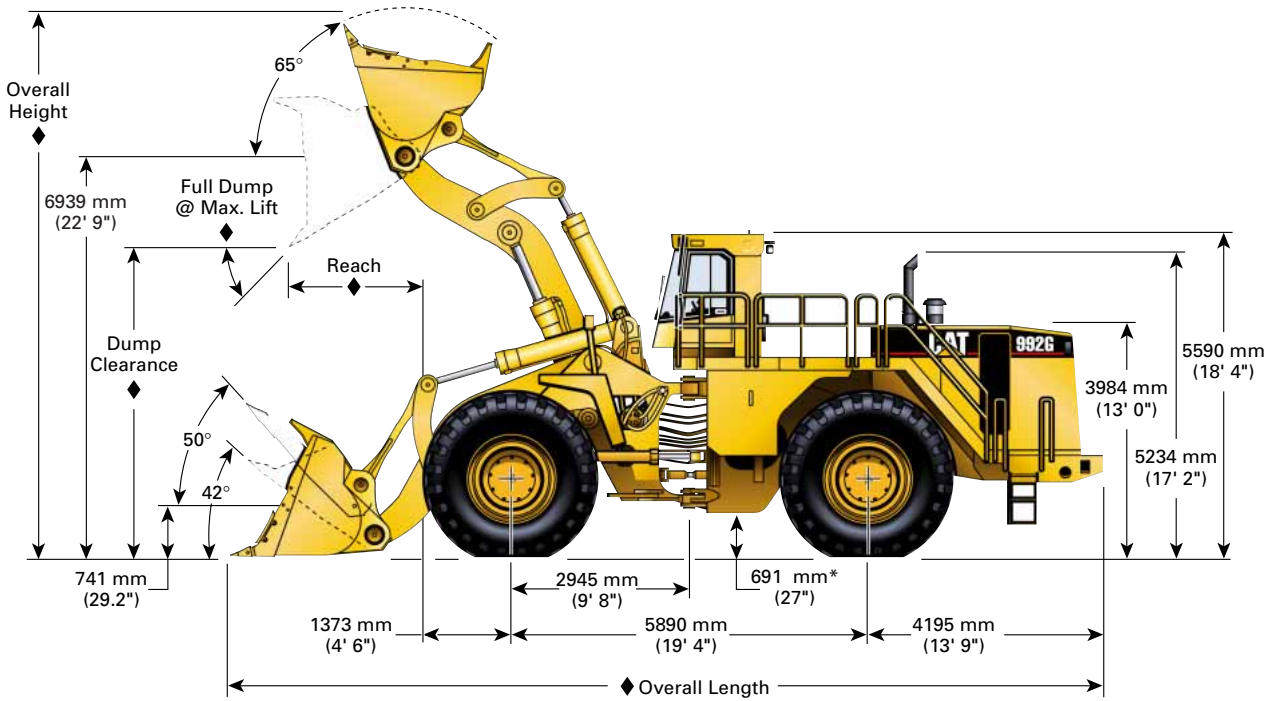
† Static tipping load and operating weight shown are based on standard machine configuration with 45/65-45, 46 PR (L-5) tires, full fuel tank, coolant, lubricants and operator.

†† Measured 102 mm (4.0"): behind tip of segments with bucket hinge pin as pivot point in accordance with SAE J732C.

992G Wheel Loader

Dimensions

All dimensions are approximate.



* Measured with standard 45/65-45, 46 PR(L5) tires

Dimensions vary with bucket. Refer to operation specifications chart on page 20.

Tire Dimensions/Specifications

| | Width over tires | | Ground clearance | | Change in vertical dimensions | |
|---------------------------------------|------------------|--------|------------------|--------|-------------------------------|--------|
| | mm | inches | mm | inches | mm | inches |
| 45/65, 46 ply L-5 Firestone | 4516 | 177.8 | 691 | 27.2 | 0 | 0 |
| 45/65, 46 ply L-5 General | 4475 | 176.2 | 679 | 26.7 | 12 | .47 |
| 45/65, 46 ply L-5 Goodyear | 4495 | 177.0 | 671 | 26.4 | 20 | .80 |
| 45/65, 50 ply L-5 Firestone | 4516 | 177.8 | 691 | 27.2 | 0 | 0 |
| 45/65, 50 ply L-5 General | 4475 | 176.2 | 679 | 26.7 | 12 | .47 |
| 45/65, 50 ply L-5 Bridgestone | 4493 | 176.9 | 632 | 24.9 | 59 | 2.3 |
| 45/65-45, 58 ply L-5 Bridgestone | 4493 | 176.9 | 632 | 24.9 | 59 | 2.3 |
| 45/65-45, 58 ply NRL 6J L-5 Goodyear | 4534 | 178.5 | 622 | 24.5 | 69 | 2.7 |
| 45/65 R45 1★ L-5 Bridgestone | 4572 | 179.9 | 581 | 22.9 | 110 | 4.3 |
| 45/65 R45 1★ VSDL L-5 Bridgestone | 4572 | 179.9 | 581 | 22.9 | 110 | 4.3 |
| 45/65 R45, RL4 Goodyear | 4557 | 179.4 | 596 | 23.5 | 95 | 3.7 |
| 45/65 R45, RL5 Goodyear | 4557 | 179.4 | 596 | 23.5 | 95 | 3.7 |
| 45/65 R45, 1★ L-4 (XLDD1) Michelin | 4519 | 177.9 | 621 | 24.4 | 70 | 2.75 |
| 45/65 R45, 1★ L-5 (XLDD2) Michelin | 4519 | 177.9 | 619 | 24.4 | 72 | 2.8 |
| 45/65 R45, 1★ L-5 (X MINED2) Michelin | 4476 | 176.2 | 629 | 24.8 | 62 | 2.4 |

Note: In certain applications (such as load-and-carry work) the loader's productive capabilities might exceed the tires tonnes-km/f (ton-mph) capabilities. Caterpillar recommends that you consult a tire supplier to evaluate all conditions before selecting a tire model. Other special tires are available on request.

992G Wheel Loader

Supplemental Specifications

| Tires: | Change in Operating Weight standard (for four tires) | | Change in Articulated Static Tipping Load | | | |
|-------------------------------------|--|---------|---|---------|-----------|---------|
| | kg | lb | Standard | | High Lift | |
| | kg | lb | kg | lb | kg | lb |
| 45/65, 46 ply L-5 Firestone | 0 | 0 | 0 | 0 | 0 | 0 |
| 45/65, 46 ply L-5 General | + 427 | + 940 | + 284 | + 625 | + 251 | + 554 |
| 45/65, 46 ply L-5 Goodyear | - 162 | - 356 | - 108 | - 238 | - 97 | - 214 |
| 45/65, 50 ply L-5 Firestone | -278 | -612 | -185 | -408 | -164 | -362 |
| 45/65, 50 ply L-5 General | +441 | +972 | +293 | +646 | +260 | +574 |
| 45/65, 50 ply L-5 Bridgestone | -423 | -933 | -278 | -613 | -248 | -547 |
| 45/65-45 58 ply L-5 Bridgestone | -91 | -201 | -60 | -132 | -53 | -117 |
| 45/65-45 58 ply NRL 6J L-5 Goodyear | -1055 | -2,326 | -694 | -1,530 | -620 | -1,367 |
| 45/65 R45 1★ L-5 Bridgestone | -1327 | -2,926 | -872 | -1,923 | -780 | -1,720 |
| 45/65 R45 1★ VSDL L-5 Bridgestone | -1327 | -2,926 | -872 | -1,923 | -780 | -1,720 |
| 45/65 R45 RL4K Goodyear | -1123 | -2,476 | -737 | -1,625 | -660 | -1,455 |
| 45/65 R45 RL5K Goodyear | -1307 | -2,882 | -859 | -1,894 | -768 | -1,693 |
| 45/65 R45 1★ L-4 (XLDD1) Michelin | - 1942 | - 4,272 | - 1290 | - 2,838 | - 1142 | - 2,518 |
| 45/65 R45 1★ L-5 (XLDD2) Michelin | - 681 | - 1,500 | - 452 | - 994 | - 400 | - 882 |
| 45/65 R45 1★ L-5 (XMINED2) Michelin | + 752 | + 1,656 | + 523 | + 1,151 | + 451 | + 994 |