



3406 C
Industrial Engine
Non-Certified
328 bkW/440 bhp @ 2000 rpm

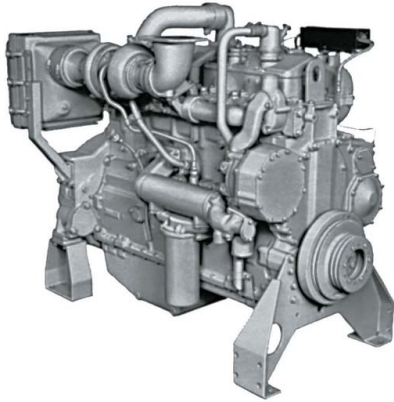


Image shown may not reflect actual engine

CAT® ENGINE SPECIFICATIONS

I-6, 4-Stroke-Cycle Diesel

Bore.....	137.2 mm (5.4 in)
Stroke.....	165.1 mm (6.5 in)
Displacement.....	14.64 L (893.39 in ³)
Aspiration.....	Turbocharged / Aftercooled
Compression Ratio.....	14.6:1
Rotation (from flywheel end).....	Counterclockwise
Capacity for Liquids	
Cooling System.....	20.8 L (5.5 gal)
Lube Oil System (refill).....	38.0 L (10.0 gal)
Engine Weight, Net Dry (approximate)..	1,518 kg (3,347 lb)

FEATURES

Emissions

Non-certified rating. Meets emission levels for Tier 1 / Stage I standards.

Single Source Supplier

Caterpillar
- Casts engine blocks, heads, cylinder liners, and flywheel housings
- Machines critical components
- Assembles complete engine
Ownership of these manufacturing processes enables Caterpillar to produce high quality, dependable product.

Factory-designed systems built at Caterpillar ISO certified facilities.

Testing

Prototype testing on every model:
- proves computer design
- verifies system torsional stability
- functionality tests every model

Every Caterpillar engine is dynamometer tested under full load to ensure proper engine performance.

Full Range of Attachments

Wide range of bolt-on system expansion attachments, factory designed and tested

Unmatched Product Support Offered Through Worldwide Caterpillar Dealer Network

More than 1,500 dealer outlets.
Caterpillar factory-trained dealer technicians service every aspect of your industrial engine.
99.7% of parts orders filled within 24 hours worldwide.
Caterpillar parts and labor warranty.
Preventive maintenance agreements available for repair before failure options.

Scheduled Oil Sampling program matches your oil sample against Caterpillar set standards to determine:

- internal engine component condition
- presence of unwanted fluids
- presence of combustion by-products

Web Site

For all your industrial power requirements, visit www.cat-industrial.com.



3406 C Industrial Engine

Non-Certified

328 bkW/440 bhp @ 2000 rpm

STANDARD ENGINE EQUIPMENT

Air Inlet System

Air cleaner, Regular duty, dry, panel type with service indicators, turbocharger, jacket water aftercooled

Control System

Governor, Hydra-mechanical

Cooling System

Thermostats and housing, Jacket water pump, gear driven, centrifugal, RH

Exhaust System

Exhaust manifold, dry, front exhaust
Exhaust elbow, dry, 152 mm (6 in), 4 bolt flange
127 mm (5 in) on 406DO12

Flywheels and Flywheel Housings

Flywheel, SAE No. 1
Flywheel housing, SAE No. 1, SAE standard rotation

Fuel Systems

Fuel Filter, LH
Fuel transfer pump
Fuel priming pump

Instrumentation

Instrument Panel, LH
Engine oil pressure gauge
Fuel pressure gauge
Water temperature gauge
Service meter

Lube System

Crankcase breather
Oil cooler, RH
Oil filter, RH
Oil filler in valve cover and dipstick, both RH
Rear sump oil pan

Mounting System

Supports

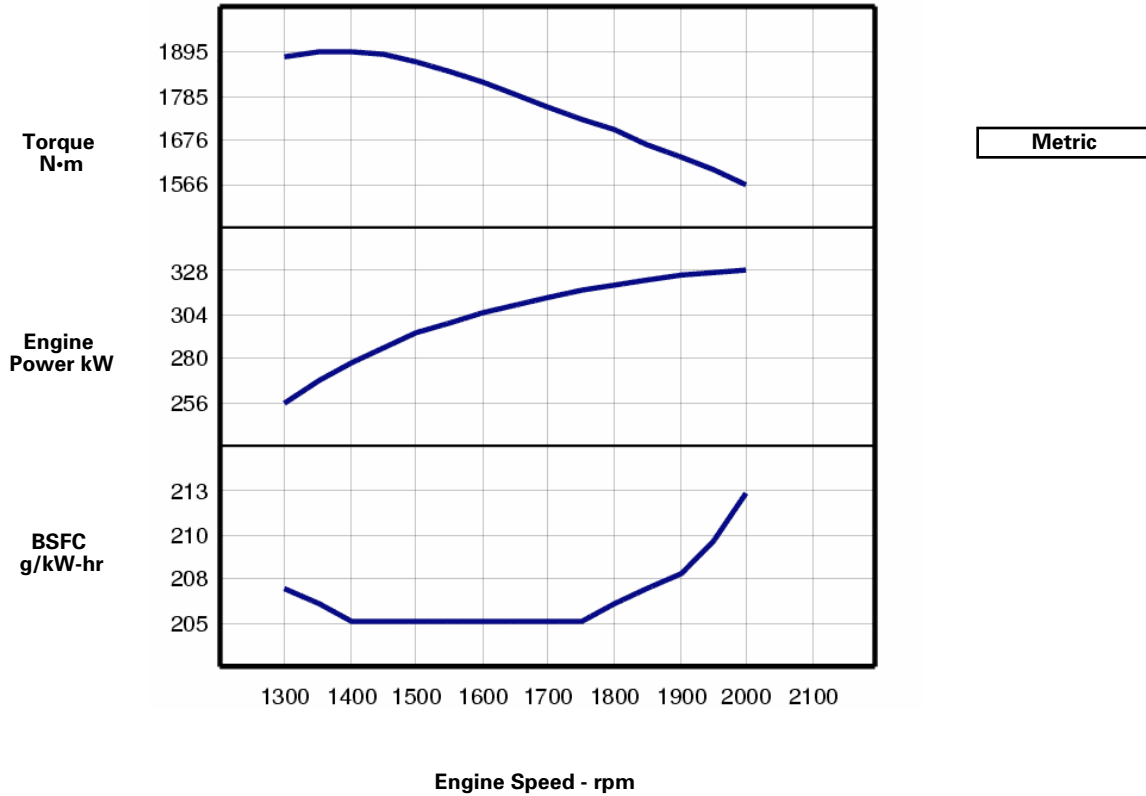
General

Paint, Caterpillar Yellow
Vibration damper and guard
Lifting eyes



PERFORMANCE CURVES

IND - C (Intermittent) - DM2256-01

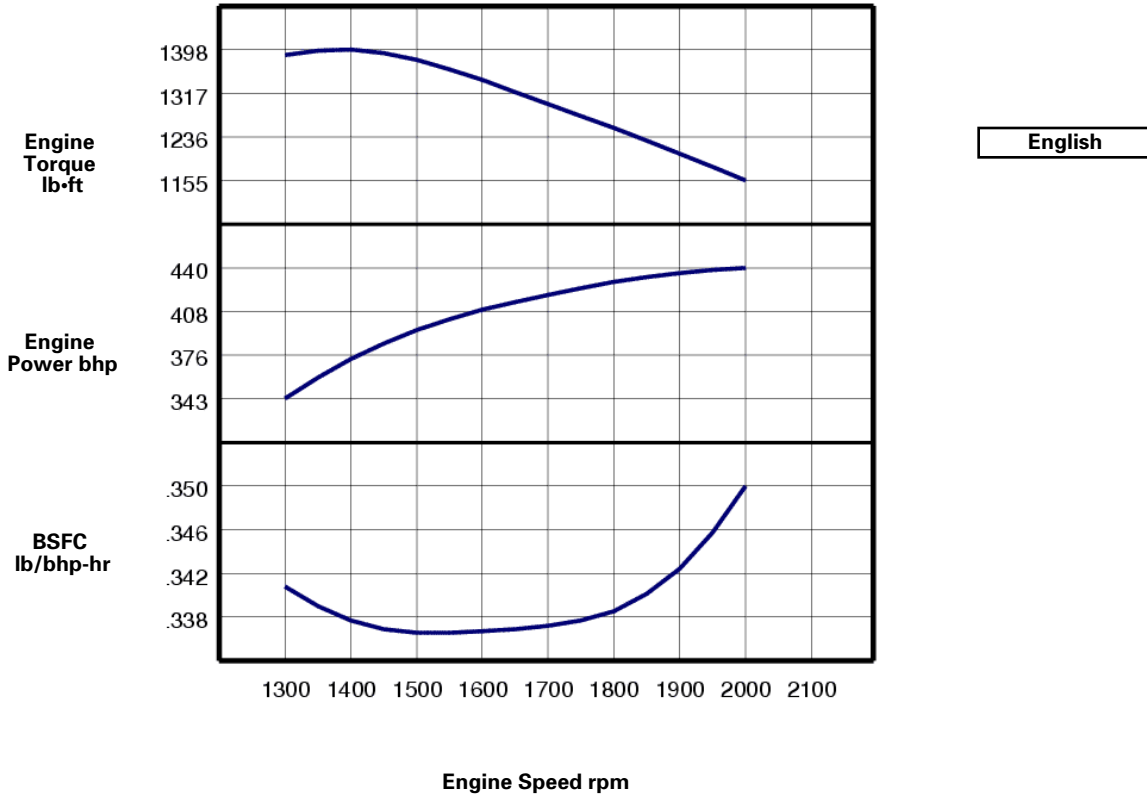


Engine Speed rpm	Engine Power kW	Torque N·m	BSFC g/kW-hr	Fuel Rate L/hr
2000	328	1566	212.9	83.2
1950	327	1600	210.3	81.9
1900	325	1634	208.3	80.7
1850	323	1667	206.9	79.6
1800	320	1699	205.9	78.5
1750	317	1729	205.4	77.5
1700	313	1759	205.1	76.4
1650	309	1789	204.9	75.3
1600	305	1819	204.8	74.2
1550	300	1846	204.7	72.9
1500	294	1869	204.7	71.4
1450	286	1886	204.9	69.7
1400	278	1895	205.4	67.8
1350	268	1893	206.2	65.6
1300	256	1881	207.3	63.3



PERFORMANCE CURVES

IND - C (Intermittent) - DM2256-01



Engine Speed rpm	Engine Power bhp	Engine Torque lb-ft	BSFC lb/bhp-hr	Fuel Rate gal/hr
2000	440	1155	.350	22.0
1950	438	1180	.346	21.6
1900	436	1205	.342	21.3
1850	433	1230	.340	21.0
1800	430	1253	.338	20.7
1750	425	1275	.338	20.5
1700	420	1297	.337	20.2
1650	415	1319	.337	19.9
1600	409	1342	.337	19.6
1550	402	1362	.337	19.3
1500	394	1378	.337	18.9
1450	384	1391	.337	18.4
1400	373	1398	.338	17.9
1350	359	1396	.339	17.3
1300	343	1387	.341	16.7



**3406 C
Industrial Engine
Non-Certified
328 bkW/440 bhp @ 2000 rpm**

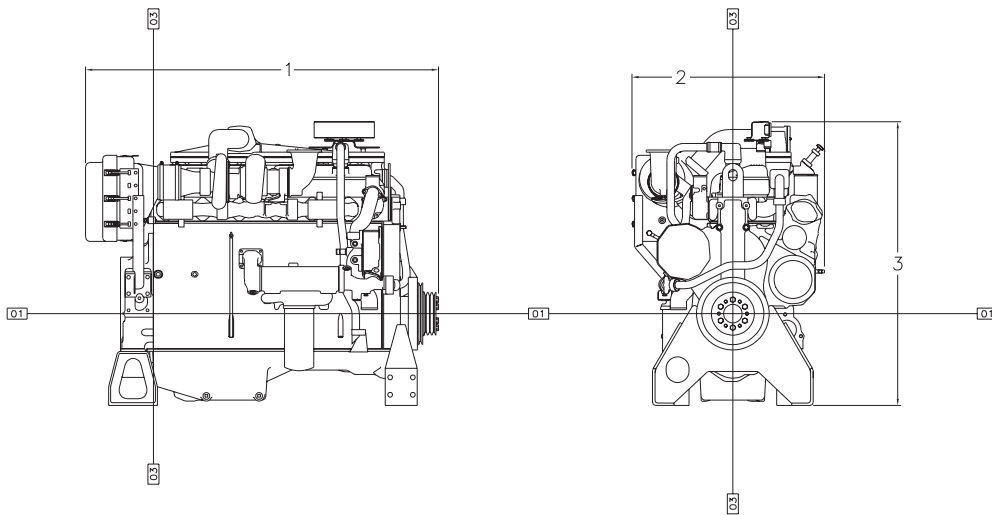
RATINGS AND CONDITIONS

IND - C (Intermittent) Intermittent service where maximum power and/or speed are cyclic. The power and speed capability of the engine can be utilized for one uninterrupted hour followed by one hour of operation at or below IND - A. Time at full load is not to exceed 50% of the duty cycle. Typical service examples are: agricultural tractors, harvesters and combines, off highway trucks, fire pump application power, blast hole drills, rock crushers and wood chippers with high torque rise, and oil field hosting.

Engine Performance Engine performance is corrected to inlet air standard conditions of 99 KPA (29.31 IN HG) dry barometer and 25 deg C (77 deg F) temperature. These values correspond to the standard atmospheric pressure and temperature as shown in SAE J1995.

Performance measured using a standard fuel with fuel gravity of 35 degrees API having a lower heating value of 42,780 KJ/KG (18,390 BTU/LB) when used at 29 DEG (84.2 DEG F) where the density is 838.9 G/L (7.001 LB/US GAL).

The corrected performance values shown for Caterpillar engines will approximate the values obtained when the observed performance data is corrected to SAE J1995, ISO 3046-2 and 8665 and 2288 and 9249 and 1585, EEC 80/1269 and DIN 70020 standard reference conditions.



Engine Dimensions	
(1) Length	1660.1 mm (65.36 in)
(2) Width	905.7 mm (35.66 in)
(3) Height	1335.0 mm (52.56 in)

Note: Do not use for installation design. See general dimension drawings for detail (Drawing # 1324895).

Performance Number: DM2256-01

Feature Code: 406DI02 Arr. Number: 1304571

Materials and specifications are subject to change without notice.

16282680

© 2012 Caterpillar

All rights reserved.

The International System of Units (SI) is used in this publication.

CAT, CATERPILLAR, their respective logos, "Caterpillar Yellow," the "Power Edge" trade dress, as well as corporate and product identity used herein, are trademarks of Caterpillar and may not be used without permission.